

AUTOMOBILES

Oakland Feature Eliminates All Motor Vibration

Today the average motorist thinks no more of driving his car 50 to 200 miles for even a week-end trip than he did a decade ago of driving 25 miles. A trip through four or five states or even half across the continent in a motor car is considered an ordinary event for two or three weeks' summer vacation.

This has been brought about by the remarkable durability of cars

today, together with smoother riding qualities which have been enhanced by full balloon tires, and the four wheel brakes which have made such trips, even at high speed, comparatively safe.

Yet one undesirable feature of motor car performance remained in taking such long trips—engine vibration. At the high speeds necessary on long runs, ranging from 25 to 45 miles an hour, the vibration of the average motor is particularly noticeable.

It was to eliminate this objectionable feature that engineers of the Oakland Motor Car Company and

the General Motors Research Corporation developed the Harmonic Balancer which positively eliminates all torsional engine vibration.

This exclusive feature of the new Oakland Six has been acclaimed by experts as the greatest mechanical achievement of automobile engineering that has been introduced this year, comparable to the introduction of the two other great developments in motor car construction, the four wheel brakes and the balloon tires.

Though the new Oakland Six was introduced only slightly more than a month ago, thousands of letters have been received by Oakland dealers

throughout the country from owners who attest to their city joy of touring in this practically motor-vibrationless car.

The Harmonic Balancer is simple in both principle and design; is non-wearing and requires no adjustment. It consists of a light steel bar, pivoted to the shaft at its center and tensioned by stiff springs at both ends. The weight of the bar and the stiffness of the springs are so selected that the Harmonic Balancer has a natural frequency of vibration practically the same as the crankshaft itself. When there is the slightest movement of the shaft, the Harmonic Balancer picks it up and vibrates in the opposite direction, thus neutralizing all torsional vibration.

The principal of its operation might be stated simply by saying that the simplest way to stop any object that is moving is to put it in the opposite direction with a force equal to the force of the moving object. That, in essence, is what the Harmonic Balancer does.

Ford Co. Will Preserve Design Of Model T Chassis

Edsel B. Ford, president of the Ford Motor Company, in a statement issued yesterday following the announcement of improved Ford bodies and chassis refinements, said:

"We do not want the impression to prevail that we are producing new Ford cars.

"Bodies for Ford cars have been materially improved but the Model T chassis remains unchanged except for a lowering of the frame and a few other important changes. Bodies, in four types, have been completely redesigned and built lower to contribute to better appearance, driving and riding comfort and roadability of the cars.

"Body improvements and chassis refinements of this time are more pronounced than at any previous time since the adoption of the Model T chassis. They are, however, entirely in accordance with the policy of the Ford Motor Company to give to the public the benefits of every improvement which we find practical for Ford cars.

"By preserving the design of the Model T chassis, the company is safeguarding continued good service for owners of approximately 5,000,000 Ford cars and trucks now in use throughout the country as well as for new car purchasers."

USED CAR DIRECTORY

1923 Big Six Studebaker Sedan.
1924 Maxwell Club Sedan.
1924 Dodge Bros. Special B Sedan.
1922 Ford Coupe.
1923 Ford Touring—winter top.
Other Cars in Good Condition and Representing Excellent Values.

EVANS - JACKSON
119 S. Woodward Ave.
Phone 301
Birmingham Mich.

REAL VALUES GUARANTEED BY OUR PLEDGE

Cadillac Victoria.
Gray Sedan.
Chrysler Sedan.
Packard Coupe.
Cole 8 Roadster.

WURSTER & STAPLETON
129 W. Maple Ave.
Phone 674
Birmingham Mich.

1925 Oakland Coach.
1925 Oakland Touring.
1924 Oakland Sedan.
1924 Oakland Touring.

All Cars Fully Guaranteed—Year Car Accepted As Part Payment—G.M.A.C. Terms.

BLOOMFIELD AUTOMOBILE CO.
113 Brownell St. - Ph. 550
(Near East Maple Avenue)
Birmingham Mich.

1920 Hupp Touring.
1922 Mercer Coupe.
1922 Jewett Coupe.
1923 Chevrolet Touring.
1922 Nash Touring.
1921 Dort Touring.
1923 Gray Touring.

BELL BROS.-GARAGE
122 East Maple Ave.
Phone 709
Birmingham Mich.

1924 Gray Sedan.
1925 Ford Coupe.
1923 Ford Sedan.
1920 Ford Touring.
1924 Chevrolet 4-pass. Coupe.

BERGER SALES
505 North Woodward Ave.
Birmingham Mich.

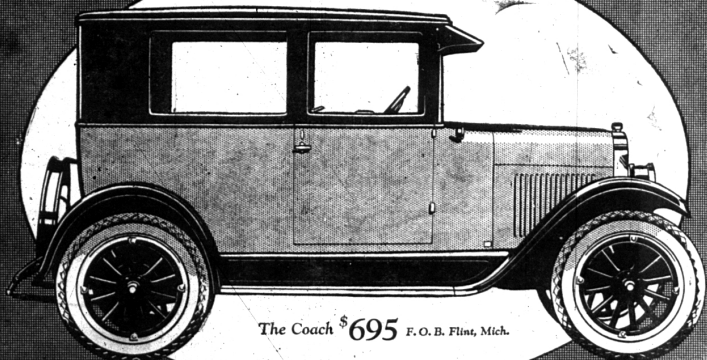
4 door Ford Sedan (year 1923).
Ford Coupe (year 1921).
Overland 91 Touring (year 1923).
Hudson 7-passenger Sedan (year 1923).
Reo 4 passenger Coupe (year 1923).

BOUGHNER BROS.
132 S. Woodward Ave.
Phone 70
Birmingham Mich.

Watch for New Listings Each Week

for Economical Transportation

CHEVROLET



The Coach \$695 F. O. B. Flint, Mich.

The Public Acclaims this the finest Low Priced Coach

Built on the new Chevrolet chassis with construction typical of the highest priced cars—powerful motor; a new disc clutch, the easiest-acting you have ever handled; extra strong rear axle; long semi-elliptic springs—this car provides a remarkable combination of strength, power and comfort.

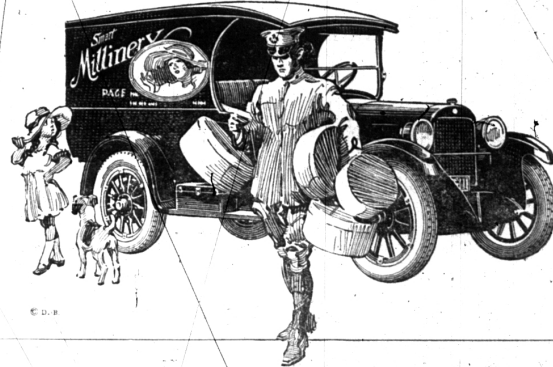
But in addition it is a beautiful car. Its fine Fisher body meets your ideals of fine appearance and comfort. It is finished in sage-green and black Duco whose lustre and color last for years. For such a coach to be priced so low is truly an achievement in motor car manufacture. See this car today.

Touring . . . \$525	Coupe . . . \$675	Commercial Chassis . . . \$425
Roadster . . . 525	Sedan . . . 775	Export Truck Chassis . . . 550

ALL PRICES F. O. B. FLINT, MICHIGAN

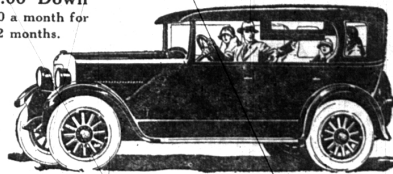
BERGER SALES COMPANY
505 N. Woodward Avenue Phone 851
Open Nights and Sundays Birmingham, Mich.

QUALITY AT LOW COST



STUDEBAKER Standard Six Duplex-Phaeton

\$427.00 Down
\$75.00 a month for
12 months.



A Year Ahead of Its Time The One-Profit Duplex—more up-to-date than the newest "yearly models"

THE Duplex Body, introduced by Studebaker in September, 1924, is a revolutionary new-type open car—with advantages open cars have never possessed before.

Within its steel-framed upper structure are concealed roller side enclosures which the driver may lower in 30 seconds without leaving his seat—giving instant protection from rain, snow, cold or wind. With equal ease the enclosures roll up out of sight.

So obvious are the advantages of the Duplex that Studebaker has become the outstanding leader in the open-car field among cars selling above \$1000.

Triumph of Studebaker Engineering
Other manufacturers will undoubtedly have to follow in Studebaker's footsteps. For any open car today without this unique advantage is obsolete.

But at the time this advertisement is written, Studebaker—and Studebaker alone—offers you this double convenience.

Another important engineering advantage pioneered by Studebaker is the use of genuine, full-size balloon tires, with steering mechanism, fenders and body lines especially designed for them.

Other manufacturers are gradually following Studebaker's lead—but remember, Studebaker developed this important feature 11 months ago.

On the Studebaker Standard Six Duplex-

Phaeton illustrated above, you'll find an automatic spark control, safety lighting control on the steering wheel, 8-day clock, gasoline gauge on the dash, improved one-piece windshield, special coincidental lock of ignition and steering gear, foot controlled cowl ventilator, completely machined crankshaft, oil drain valve which a girl can operate without soiling her hands, and waterproof ignition—all Studebaker features.

These are a few of the points which show that Studebaker cars are more up-to-date than the "new models" now being announced in dizzy succession.

And any automobile expert will tell you that new models of necessity are engineering experiments. Only after months of use in the hands of owners can all mechanical flaws be eliminated. Engineers are human—and it takes time to eliminate mistakes.

Thus, when you buy a Studebaker, you not only get a motor car that is completely up to date, but you also eliminate all guesswork and gamble. Your new car has been tested and proved satisfactory in the hands of thousands of owners.

Come in today—and see the One-Profit Duplex which has made all other open cars obsolete. It is called a "one-profit" car because all vital units are built entirely by Studebaker—thus eliminating the extra profits and overhead of outside parts makers which many other manufacturers must pay and include in the purchase price to you. This explains the fine quality and the low price.

WURSTER & STAPLETON

129 W. MAPLE AVE. PHONE 674
Service Station back of Post-Office