

CRAIG'S BAKERY

—and now,
Mr. and Mrs. Husband and Wife

We are broadcasting to your home the fact that Craig's Bakery is the largest privately owned bakery in Oakland County!

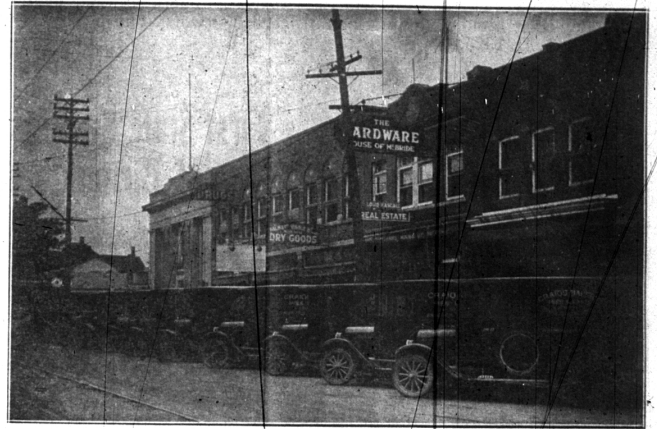
Starting from a little shop six years ago, this bakery has grown each year until now it probably employs more people than any other single enterprise in Birmingham.

We have but recently completed our enlarged bakery plant on East Maple avenue, in the rear of our Woodward avenue store. We extend a cordial welcome to all local and nearby residents to inspect this most modern, up-to-date bakery plant.

This is Our Delivery Equipment

Above is pictured the ten new Chevrolet delivery trucks purchased by Craig's Bakery from Washington N. Berger, local Chevrolet dealer. These trucks—the last word in bakery delivery systems—will carry the goods baked at Craig's Bakery to all points deviating from Birmingham.

Housewives will welcome the addition of this delivery system, because it means that they will get FRESH BAKED GOODS every day; and they will get the various tasty things ON TIME.



These People are Employed at Craig's

Here you see the men and women employed at Craig's Bakery who are engaged in manufacturing the BAKED GOODS that have made Craig's Bakery one of the most vital necessities in the homes of this vicinity. Every person in this group is qualified to do a certain part of the work well; by co-ordinating and co-operating their efforts, these workers enable Craig's Bakery to sell its product at a minimum cost.

When you buy any of Craig's Bakery products, you are assured of good food, made by capable people, and guaranteed in every respect.

Doughnuts

Bismarcks

French Pastry

Slices

Raisin Bread

Wedding Cakes

Graham Bread

Layer Cakes

Jelly Rolls

Whole-wheat Bread

Nut Bread

Pies

Coffee Cakes

Pound Cakes

Rye Bread

Scones

Party Cake

Cupcakes

Macaroons

Eclairs

White Bread

Biscuits

Cream Puffs

Rolls

Craig's Bakery

102 North Woodward Avenue Phone 225