

# Automobiles

## USED CAR DIRECTORY

1924 Durant Touring.  
1924 Big Six Studebaker Touring.  
1922 Dodge Touring.  
1924 Packard Touring.  
1921 3-Pass. Dodge Coupe.  
Other Cars in Good Condition and Representing Excellent Values.

**EVANS - JACKSON**  
119 S. Woodward Ave.  
Phone 301  
Birmingham Mich.

### CERTIFIED BARGAINS

Chrysler Sedan, '26  
Ford Roadster, '25, Balloons  
Essex 4 Touring  
Maxwell Coupe, '25  
Chrysler 8 Roadster, '25  
Liberal Payment Plan.

**WURSTER & STAPLETON**  
132 W. Maple Ave.  
Phone 674  
Birmingham Mich.

1920 Hupp Touring.  
1922 Mercer Coupe.  
1922 Jewett Coupe.  
1922 Nash Touring.  
Nash Roadster.  
1923 Gray Touring.  
1923 Overland Touring.

ALL USED CARS IN A-1 CONDITION

**BELL BROS. GARAGE**  
122 East Maple Ave.  
Phone 709  
Birmingham Mich.

Dodge Touring—1921  
Gray Sedan—1924  
Ford Sedan—1923  
Ford Light Delivery—1923  
Chevrolet Touring—1922  
Chev. Light Del. Truck.  
Ford Touring—1920  
Ford 1-ton Truck, new motor just installed.

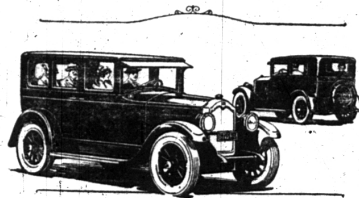
**BERGER SALES**  
505 North Woodward Ave.  
Birmingham Mich.

1924 Ford Touring.  
1924 Chevrolet Touring.  
1925 Ford Roadster.  
1923 Olds Touring.  
1 Essex Six Coach, late 1924.

**EVERY CAR A REAL BUY**

**BOUGHNER BROS.**  
132 S. Woodward Ave.  
Phone 70  
Birmingham Mich.

## Watch for New Listings Each Week



### Compare these Better BUICK Sedans with "Coaches"

These finer closed cars are built on the famous Buick chassis with the 23-year covered, 60 and 75 horsepower Buick Valve-in-Head engines. Extra power!

And they have the famous "Sealed Chassis" and the new "Triple Sealed Engine." No other car, regardless of price, furnishes this completeness of protection for driving parts.

And these Buicks have the characteristic Buick charm of body profile. They are finished in Duco. They seat five full grown people in roomy comfort. They have the Fisher V V one-piece, ventilating windshield, automatic windshield wiper, and a host of like necessities. Buick's exacting closed car standards prevail in their Fisher-built bodies.

Come in and see how much superior these Better Buick Sedans are to "Coaches", before you spend your money!

**BUICK MOTOR COMPANY, FLINT, MICHIGAN**  
Division of General Motors Corporation

### The Better BUICK

**ARTHUR ROSE BUICK SALES**  
PONTIAC

James E. Valentine - Salesman  
117 WORTH ST. BIRMINGHAM  
At Pontiac Sales Room Every Friday

# ESSEX "6"

Built Under Famous Super-Six Patents

## The Coach

New Low Price

**\$765**

Freight and Tax Extra

And for those who desire, the Essex Coach may be purchased for a low first payment. The remaining payments conveniently arranged.

**BOUGHNER BROS. GARAGE**

LOCAL DISTRIBUTORS

120 S. Woodward Ave.

Phone 70

## 8,165 Cars and Trucks Turned Out By Ford On Friday, October 23

The Ford Motor Company reached the highest production peak in the records of the company Friday when 8,165 cars and trucks went off the assembly lines of domestic branches. Friday's record, however, is expected to be short lived, for production will reach 8,500 daily before the end of the month, making possible a total output of approximately 200,000 for October, the greatest in Ford history.

This information was contained in a statement issued at the company's general offices here Saturday afternoon, which details the remarkable industrial accomplishments effected in producing the improved Ford cars and which at the same time definitely dispels all fictitious rumors regarding Ford production circulated since the new cars were announced.

"Less than sixty days after discontinuing its former style passenger cars the Ford Motor Company has brought the improved types into normal production in all its assembly plants throughout the United States, it was stated.

"The former type passenger cars went out of production in August, during which month 4,616 passenger cars were produced.

"Because of the many changes and improvements made in Ford bodies it was necessary to re-arrange departments in all assembly plants, install considerable machinery and lengthen paint ovens to permit longer baking and an increase in the number of coats of paint between the cars. This was accomplished and production started in the plants early in September.

Output of the improved cars increased rapidly and for the week ending September 19 the production total showed 22,778 cars and trucks.

"Since that time output has been growing steadily. During the last few weeks the company has been shipping through its branches to dealers more than 7,000 cars and trucks a day, the shipments increasing to the record reached Friday, October 16, when 8,165 cars and trucks were produced. This output will be increased to \$500 a day before the end of the month. Production for October will run close to 200,000, a new high record.

"These figures assure the public that cars will be forthcoming in such large quantities from now on that deliveries can be made to customers without any great delay.

"Preparations for bringing in the new cars, which entailed the changing to all steel bodies, were begun months back, but the actual work of placing cars in production and bringing the output up to the normal average of more than 7,000 a day has all been accomplished within sixty days. Aside from the engineering work, the task of producing the improved cars involved in part, the preparation of tools for 8,291 new operations necessitating more than 3 million hours of work by expert toolmakers, complete changes of whole departments, the installation of 1,074 new machines in the Highland Park and River Rouge plants and in other manufacturing units, the designing and making of 903 new and different small tools totalling 75,000 pieces and the educating of thousands of men in making new automobile parts.

"The increase in production, together with constantly expanding activities has brought employment in the Ford organization in the United States to a new high figure. At present the number of those employed exceeds 178,000."

### OAKLAND TO COME OUT WITH NEW STYLE SEDAN

The Oakland Motor Car Company now has in production a new style Landau Sedan with larger body, wider rear seat, larger rear quarter window, new colors and other refinements. Price remains unchanged—\$1,295 f. o. b. Pontiac, Mich.

The lengthening of the body affords added space in the tonneau of the car and easier entrance, while the widening of the rear seat provides leg car roominess so desirable for the complete relaxation of occupants.

The rear quarter windows have been enlarged from the oval to a square finish, with upper rear corners rounded to conform to the shape of the rear line of the body. The graceful bows upon the leather rear quarters still remain one of the distinctive features of this body style.

The change in Duco finish to a pyramidal gray lower body with black upper structure and red striping on body, hood, louvers and wheels adds to the attractiveness of this most distinctive car of the Oakland line. Automatic windshield cleaner, visor, front snubbers, natural wood wheels, front bumper, rear fender guards, gasoline gauge on instrument board, heater, motor, Fisher V V one-piece windshield, roller shades and other appointments associated with this type of car are standard equipment, besting the many advanced mechanical Oakland features such as Harmonizer, air cleaner, oil filter and mechanical four-wheel brakes.

Current sales of the Landau Sedan, the highest priced Oakland, are greater than those of any other car in the line, with the exception of the Coach.

### Lame Back

A lame, aching back may be more serious than you think. It is frequently a forerunner of chronic kidney trouble or Bright's Disease. Seek relief before it is too late. Physicians everywhere prescribe Mountain Valley Water from Hot Springs, Arkansas, as an aid in the relief of all kidney disorders. Why suffer another day? Photo for a case today.

**MINER GROCERY CO.**

Birmingham Distributors

Phone 645-646-647

— We Deliver —

# Quality

## The Biggest Factor in Economy

Fine quality built into an automobile makes it run well, wear well, look well for a long time. It keeps satisfaction high and operating costs low.

When you get fine quality at a low purchase price you have gained the highest degree of economy in the purchase of an automobile.

Because Chevrolet represents the highest type of quality car at low cost it has been the choice of over two million people.

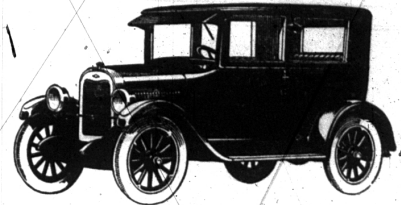
Visit our showroom and see for yourself how truly Chevrolet combines quality with low cost.

For Economical Transportation



Touring Car \$525  
Roadster - 525  
Coupe - 675  
Sedan - 775  
Commercial Chassis - 425  
Express Truck Chassis - 550  
ALL PRICES F. O. B. FLINT, MICH.

The Coach  
**\$695**  
F. O. B. Flint, Michigan



### Special Exhibit This Week

**BERGER SALES COMPANY**  
505 N. Woodward Avenue Phone 851  
Open Nights and Sundays Birmingham, Mich.

## QUALITY AT LOW COST

# A GRAHAM BROTHERS Truck Chassis for \$995!

F. O. B. Detroit

This exceptional new price of the 1-ton chassis is the result of economies of mass production—economies passed directly on to the buyer.

Graham Brothers now produce in larger quantities than any other exclusive manufacturer of motor trucks.

**Evans-Jackson Motor Co.**  
119 SOUTH WOODWARD AVE.  
PHONE 301 Birmingham, Mich.

# GRAHAM BROTHERS TRUCKS

SOLD BY DODGE BROTHERS DEALERS EVERYWHERE