

"I'm happy About our Home"

Think what those words mean! An expression of gratitude that makes a lifetime of saving worth while. Or perhaps those words reveal the satisfaction which results from careful selection of materials—from material purchases made on the basis of real value.

And how genuinely is such happiness shared by builder, carpenter, realtor, architect and building material dealer—all who assist such an owner to be "happy in his home."

To satisfy customers with materials of real value has been a Strand policy since the inception of this business twelve years ago. The home owner who invests his savings in Strand materials can sincerely say, "I'm happy about our Home." That is particularly true of

Curtis Woodwork

Doors — Windows — Frames — Trim — Entrances — Mantels — Stairs — Kitchen Cabinets — Ironing Boards — Medicine Cases — Linen Cases

The entrance on the left stamps a house as distinctive, increasing its resale value should the owner desire to dispose of it. The dining alcove at the left and the ironing board at the right are labor—and step-saving times that have become housekeeping necessities. Sturdy and strong, they reflect the honesty of purpose of the Curtis institution which manufactures them. The corner china closet at the right adds more than its cost to the value of any home.

Those interested in building, either as prospective owners or as a profession, should inspect these and many other items at our Main Office, 8133 Epworth Boulevard. You will find many ways to "Put more value in a home"—and the man who succeeds in a big way is the man who gets or gives real value. Such success is permanent.

Strand Stands for Sound Values

Economy in value rather than cheapness in price—dependable quality, always the same, day after day—intelligent service, deliveries when needed. That is the platform on which this organization has builded and is building.

Economy is not shoddy cheapness. To those who consider "low price" economical, "low price" usually proves a costly waste of dollars. The "extra" dollars invested in real quality, multiply themselves in terms of satisfaction and added resale value.

Dependable quality is that quality that builders need not watch. The builder who builds is the builder who makes money—not the man who wastes time shopping for a "price." It is the "price buyer" who has to watch his quality. Sticking to the dealer with a reputation for quality saves time which is money to the busy builder.

The time to investigate is NOW. Get in on the ground floor and be ready in your next operation to take advantage of the real values we offer—a good workman knows the difference.

Strand Lumber Co.

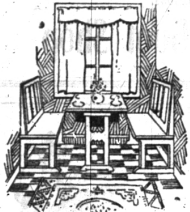
Lumber, Sash, Doors and Woodwork

EAST YARD **MAIN YARD AND OFFICE** **WEST YARD**
 7-Mile Road, East of Mt. Elliott Epworth Boulevard at Linsdale Division Road, North of Warren
 Phone Lincoln 6997 **Detroit, Mich.** Phone Walnut 2091



Entrance C-100

This entrance frame may be used in walls of any type of construction. Unusually weather tight. Any door may be used. Clear white pine—oak sill.

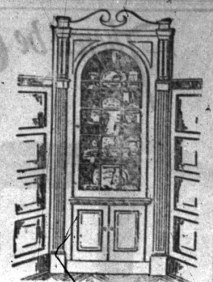


Dining Alcove C-742

Reasonable in price, but of highest character of workmanship. Thoroughly braced, of clear material, easily and quickly assembled, a step and space saver.



The Curtis trade-mark, imprinted on, impressed into or affixed to items of woodwork guarantees the choicest woods, high standards of workmanship and authentic designs. Pledging honest effort, it is your safeguard and our guarantee.



China Case C-700

This case is extremely popular throughout the land. Easily installed in an old home. Set in a corner it requires little space.



Ironing Board C-770

The strongest, most stable ironing board offered today. Adjustable in height. May be installed in an old home at low cost. A real value.



The Strand trade-mark stands for Strand ideals, which include straightforward, business-like, honest dealing; progressive methods; intelligent constructive thought to the end that Strand customers must be fully satisfied.

The Story Of Bloomfield Hills

An Interesting Account of the History of One of Detroit's Finest and Fastest Growing Residence Sections.
 (Re-printed From "The Bridle and Gopher" Magazine.)

Many who are familiar with the history, and includes that territory from unusual beauty and charm of this Birmingham to Pontiac, adjacent to Woodward Avenue, together conversant with its extent and location. The name "Bloomfield Hills" which has such a prestige, is tied by many improvements as well derived from the hills and dales and as the beautiful homes and estates generally rolling topography in of many of Detroit's most substantial Bloomfield Township, Oakland County citizens. The principal thorough-

\$12.50
 for your old cleaner
 —Get a new one!

If the old one is running weakly—getting half the dirt—picking up every other thread only—and taking twice as long to do it—away with it! Let us give you \$12.50 for it—and buy a new Premier Duplex. It gets all the dirt! A motor-driven brush loosens all the grit and picks off all the threads. And powerful suction draws it all up. Ball bearing—needs no oiling—and lasts a lifetime!

Start today.
 Life is too short to waste unnecessary time in cleaning. And by saving as little as 19c a day you can quickly own a new Premier.

Premier Duplex

LEONARD ELECTRIC COMPANY
 134 W. MAPLE AVE.
 Phone 223

fare leading from Detroit to Bloomfield Hills is, of course, Woodward Avenue, a highway that has changed very materially in the last twenty years. Some of the early pioneers when can remember distinctly when this thoroughfare was planked. Later it was gravelled and the toll system abandoned. Still later a cement road was laid by Wayne County past the State Fair Grounds, and thence to Royal Oak. The strip through the south portion of Royal Oak was laid through private subscription by those who had already established residences in the Bloomfield Hills district.

About ten years ago, Colonel Edwin S. George, and other public spirited citizens took up the question of extending the cement road from Royal Oak to Birmingham, with the county Commissioners. Their proposal to the commissioners was that the committee would raise by private subscription a sum equal to the amount expended by the state on such a road. This proposition met with favor and a similar committee from Pontiac, consisting of E. P. Waldron, who was at that time president of the Pontiac Board of Commerce, O. J. Beaudette, W. L. Day, George Gardner, and several others, immediately made a similar proposal to extend the road to Pontiac. This latter proposition was also accepted by the board of supervisors. This made possible the initial cement road from Detroit to Pontiac through the Bloomfield Hills district.

The road was constructed on the west side of the Detroit United Railway's right-of-way, and Mr. Waldron, together with other property owners, dedicated an extraordinary amount of land on the east side and the sixteen-foot cement road on the west side, from Pontiac through Bloomfield Highlands. Now this road is being supplanted by the new 204-foot wider Woodward Avenue construction, a road that will be the finest highway in the world.

The local points on Woodward Avenue through the Bloomfield Hills district commencing with Birmingham, are as follows: Quaker Road, Charing Cross Road, Lone Pine Road, Cranbrook Road, Bloomfield Center, Hickory Grove Road, Square Lake Road, Bloomfield Highlands, Bloomfield Boulevard, and the south city limits of Pontiac.

Soon after this road was constructed, during the years of 1914 and 1915, the township board of Bloomfield took up the subject of lighting the road through Bloomfield township. The board was composed of such far-sighted men as Lether Allen, James Cobb and Robert E. Broughton, and these gentlemen deemed it a good investment both from the standpoint of convenience and safety. Co-operation with Detroit Edison officials, a plan was worked out for the lighting of all cement roads in the future.

Following this move the township of Royal Oak also adopted the policy of lighting the road, thus making the State of Michigan at that time the first in the nation to have a strip of rural-lighted road in the State of Michigan at that time. —from Detroit to and through Pontiac, a distance of thirty miles.

Following the laying of the cement road, Maple Avenue, west of Birmingham, was paved in 1910, through Bloomfield township, and two years later Long Lake road was paved and lighted from Woodward Avenue through to Pine Lake and Orchard Lake, easy grades being adopted, which did not mar the contour of the country with unsightly cuts or hills.

TO THE PATRONS
 of
Northwood Inn
 ON WOODWARD AVENUE, BETWEEN
 11 AND 12-MILE ROADS

Make Your Reservations Now For
Hallowe'en Night
 Saturday, October 31, 1925

A GOOD TIME IS PROMISED FOR EVERYONE

Special Music by Al Dewey's Northwood Inn Orchestra

PRIVATE DINING ROOM NOW READY FOR BANQUETS AND SMALL PARTIES

Paul J. Weyer
 MANAGER

Telephone Royal Oak 480

FOR READ WANT ADS
 52 Issues of The Eccentric for \$1.50

FURNITURE REPAIRING
 BOX, SPRING AND HAIR MATTRESSES
UPHOLSTERING
B. F. BROOKS
 PHONE 625-W Birmingham, Mich. 206 N. Woodward