

When you Buy or Build a Home

You do it for profit. When you buy a home you expect to profit in terms of happiness, contentment, pride and better living conditions. When you build a home you seek these same results.

When you, as a builder, erect homes for others, you do so for profit. Be it architect, builder, carpenter, individual home builder or realtor—the Golden Rule applies. The most successful strive to get or give value—value in contentment, beauty, pride of ownership.

A perfect balance between first cost, upkeep expense and the value of entire satisfaction should be sought. This will be found in

Curtis Woodwork

DOORS — WINDOWS — FRAMES — TRIM — ENTRANCES — MANTELS — STAIRS — KITCHEN CABINETS — IRONING BOARDS — MEDICINE CASES — LINEN CASES

No other line of woodwork follows designs or styles which do not "go out." Curtis has built sound value into their entire line and have followed designs that do not go out of style—designs that are easy to live with—that provide added re-sale values—lower upkeep—lower installation costs.

The linen case and medicine cabinet on the left are accepted as standard home equipment because of their labor-saving possibilities.

The door and mantel at the right follow designs which have stood the test of years—"two hundred years old and still good," as one architect expressed it.

PUTTING MORE VALUE IN A HOME

The entire success of the Strand organization has, we believe, been based on a knowledge of the builder's needs and an ability to serve those needs completely. Adequate stocks and rapid delivery and material handling make Strand's materials a good buy month after month—year after year.

Our service men are eager to make suggestions which

mean quicker sales for the builder and greater values for the buyer—an interview will be well worth your time.

START WITH STRAND AND YOU'LL STAY

Come to our main office—see and inspect Curtis Woodwork and other Strand materials. You will want to use them in your next operation, and you will find why those who have started with Strand stay with Strand.

Strand Lumber Co.

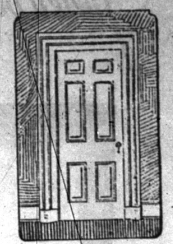
Lumber, Sash, Doors and Woodwork

MAIN YARD AND OFFICE
Epworth Boulevard at Linsdale

Detroit, Mich.
Phone Garfield 6200

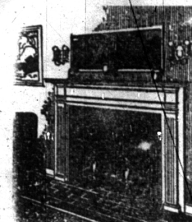
WEST YARD
Division Road, North of Warren
Phone Walnut 2091

EAST YARD
7-Mile Road; East of Mt. Elliott
Phone Lincoln 6997



Door C-302

Solid raised panels of unusual thickness make this a Colonial air of real character. Stained to the usual size in white pine. Beautiful—durable—inexpensive.



Mantel C-617

Delivered ready to set in place this mantel represents a distinct saving. The beauty of its actual adds materially to the value of any home.

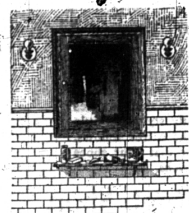


The Curtis trade mark, imprinted on, impressed into or affixed to items of woodwork guarantees the choicest woods, high standards of workmanship and authentic designs. Pledging honest effort, it is your safeguard and our guarantee.



Linen Case C-813

Adds much to the value of any home. May be installed behind interior door of usual width. Depth 2 1/2". Commodious, practical. Dust-proof drawers, removable trays.



Medicine Case, C-817 Jr.

Clear white pine, throughout adjustable shelves, highest grade plain plate mirror. Reasonably priced. May be used with any door and window trim. High-grade workmanship.



The Strand trade mark stands for Strand ideals, which include straightforward, business-like, honest dealing; progressive methods; intelligent constructive thought to the end that Strand customers must be fully satisfied.

BOARD OF EDUCATION

Birmingham, Michigan.

Sept. 21, 1925

The regular meeting of the Board of Education was held in the office at 8 p. m.

Present: R. J. Taylor, Fred V. Quarton, R. J. Coryell, and Leigh Lynch.

The minutes of the previous meeting were approved.

A delegation from the Association of University Women presented the plans of the proposed branch of the Merrill-Palmer school which it wishes to establish in Birmingham, and it was agreed that a special meeting be held Monday, Sept. 28, 8 p. m., to hear further discussion of the plans of the proposed school.

The following bids were received for the Adams School:

GENERAL CONTRACT
Chissus Bros. \$223,500
C. H. Malisky & Son. 286,400
Delancey. 201,800
A. W. Kutsche Co. 195,000
J. R. Patterson & Co. 189,570
N. A. Starr Co. 189,474

PLUMBING, HEATING AND VENTILATING
Drake & Avery \$52,841
Main Plumbing Co. 52,500
L. D. Holzer 52,500
James & Brown 49,000
C. E. Ream: Heating and Ventilating, \$30,450; Plumbing, \$9,480; Heating, Ventilating and Plumbing 48,900

HEATING AND VENTILATING
Main Plumbing Co. \$43,500
Drake & Avery 41,917
L. D. Holzer 41,785
Bryce Company 40,867

PLUMBING
Drake & Avery \$11,690
L. D. Holzer 10,325
Main Plumbing Co. 9,200
C. E. Ream 4,480

Underwood Typewriter Co., typewriter stand
First National Bank, coupons
Central Scientific Co., instruments
W. M. Welch Mfg. Co., supplies
Clarence Vliet, petty cash

Shaw-Walker Co., furniture 221.37
J. H. McBride, hardware 1.41
Royal Typewriter Co., typewriter 90.00
Miller Lock Co., padlocks 1.96
The Detroit Edison Co., electricity 10.45
Bausch & Lomb Optical Co., supplies 207.45
The B'ham Hardware, supplies 30.49
E. A. O'Neal, supplies 2.50
P. E. Sternal, supplies 1.50
Bockstans Bros. Co., supplies 140.01
First National Bank, coupons 675.00
The Detroit Edison Co., electricity 7.13
B'ham Sign Co., signs 24.45
Batter Line Cinder Sup. Co., cinders 48.00
I. Bailey, gas and oil 8.17
First National Bank, coupons 250.00
The Athletic Supply Co., supplies 3.61
Bockstans Bros. Co., supplies 427.50
James E. Degan Co., supplies 16.71
A. C. McClurg & Co., books 28.56
The Builders' Shop, supplies 13.72
Newton & Co., supplies 19.12
S. F. Trumbull, repairing 309.00
American Type Founders Co., cabinet 28.12
Consumers Power Co., gas 75
Bipwood, printing 112.50
Winn Co., printers 13.02
Lawson-Erb Lumber Co., supplies 852.79
Wilson Drug Co., supplies 2,115.97
Standard School Fixtures Co., furniture 374.00
American Type Founders Co., supplies 60.76
The Tablet & Ticket Co., supplies 3,075.00
David C. Blesath, supplies 225.00
Royal Oak-Birmingham Express, freight and cartage 42.13
Public School Publishing Co., supplies 16.00
A. C. McClurg & Co., books 205.10
Consumers Power Co., gas 250.00
Louis Kopelschatz, setting blackboards 781.90
First National Bank, coupons 1,019.15
W. S. McAlpine, surveying 422.00
Grand Rapids Body Co., furniture 1.50
Louis H. Rousseau, mort. & int. on Paulus lot No. 28 172.70
Royal Typewriter Co., overhauling typewriters 10.88
B. H. S. Cafeteria, cafeteria 108.60
First National Bank, pay roll 7.48
A. W. Kutsche & Co., Pierce 12.11
D. B. Wilkinson, supplies 3.48
Mich. Bell Telephone Co. 246.80
Chissus Brothers, work 69.61
Ginn & Co., books 125.00
Oliver Mach. Co., supplies 5.19
W. M. Welch Mfg. Co., supplies 80.00
First National Bank, pay roll 6,140.00
First National Bank, books 12.92

The Richmond & Backus Co., supplies 17.90
C. H. Hanson, supplies 17.88
Union Paper & Twine Co., supplies 40.43
Cyclone Fence Co., supplies 2,159.50
Lucile G. Hartsuch, Dom. Science supplies 23.86
Thomas Charles Co., supplies 1,188.64
Gregory, Mayer & Thom., supplies 18.03
Am. Book Co., supplies 15.64
John C. Winston Co., supplies 35.64
A. Flanagan Co., supplies 16.37
Harry Levy, supplies 94.57
W. M. Welch Mfg. Co., furniture 296.10
T. D. Lynch, treasurer's bond 40.00
Harry Levy, supplies 28.33
L. M. Randall, petty cash 14.03
Chissus Bros., erecting bell 200.00
H. B. Clements, President, Birmingham, Michigan, Sept. 22, 1925.

A special meeting of the Board of Education was held in the session room at 8 p. m.

Present: H. B. Clement, R. J. Taylor, Fred V. Quarton, Leigh Lynch, and R. J. Coryell.

The petition to establish a Merrill-Palmer school in connection with the Birmingham public school system was discussed at length.

SPECIAL SALE

USED GAS RANGES

THESE RANGES ARE ALL GUARANTEED

- One Detroit Jewel Cabinet Range, 16-Inch Oven, Nearly New \$50.00
- One Roper Cabinet Range, 18-Inch Oven \$25.00
- One A. B. Cabinet Range, full white enamel 14-in. Oven with Oven Heat Control \$40.00
- One A. B. Cabinet Range, full white enamel 14-in. Oven, with Oven Heat Control, nearly new \$70.00
- Two Four-Burner A. B. Low Oven Stoves \$15.00
- One Four-Burner Low Oven, with Broiler, A. B., nearly new \$30.00



Consumers Power Co. 132 East Maple Avenue