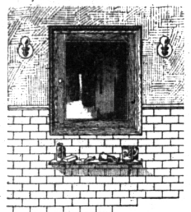


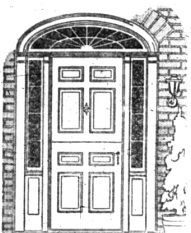
**Curtis China Case C-700**  
Homeliness and hospitality reign in the home with things built in. This china case of rare design may be set in a corner or in a recess in wall. Adjustable shelves. Beautiful as well as useful.



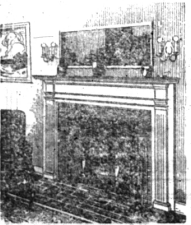
**Curtis Ironing Board C-770**  
"Always ready for use but never in the way; free from dust; adjustable in height; steady and strong"—that's what housewives say of the Curtis ironing board. Easy to install in new homes or old.



**Curtis Medicine Case C-817 Jr.**  
An all-family, year 'round home convenience. Its mirror door is always useful. Can be placed "most anywhere" in bathroom or kitchen. Rough opening required. 1'4 1/2" x 1'8 3/4" x 3 1/2". Mirror, 12" x 16".



**Curtis Entrance C-101**  
Distinctive doorways "make" a home. Builders like Curtis entrances and doors because of their beauty, solid construction, life-long satisfaction. Curtis gives added value without added cost. This design is adapted to any kind of construction.



**Curtis Mantel C-617**  
A perfectly designed mantel for any type of home. Note the fluted pilasters, the moldings and other details of unusual delicacy which lend charm and refinement. Popular with home builders.



The Strand trademark stands for Strand ideals, which include straightforward, businesslike, honest dealing; progressive methods in meeting changing conditions; intelligent, constructive thought on the part of each member of this organization, to the end that customers must be fully satisfied with transactions handled "just a little better," if that is humanly possible. The

# Strand Lumber Company

Appointed Detroit Distributors of

## 1866 CURTIS WOODWORK

It is a perfectly normal and natural development—this union of outstanding organizations. Both grew from humble beginnings to the positions they now occupy—both guided by the same fundamental principle of delivering value for the consideration asked—both operating under the proven policy, "The customer is always right."

In the realm of the retailers of building materials the Strand organization has long been recognized as a pioneer. It has led in simplifying the processes by which goods move most speedily and economically from warehouse to the finished home. It has consistently offered a higher grade product and at the same time reduced costs.

Among woodwork manufacturers the name Curtis has stood for quality—unchallenged—for more than half a century. That quality today is within the reach of all, as a result of standardizing mammoth production facilities on a complete line of well-designed woodwork forms.

### First in Service—First in Achievement in Providing Economy and Quality for Detroit Home Builders

It is, we believe, with pardonable pride that we make that statement. Those closely allied with the building business in Detroit have but to think back twelve short years to bring to mind a picture of materials and methods which would fall far short of meeting today's requirements.

As our city developed, materials and methods were found to keep pace with that development. Old methods were discarded because they failed. New ways were devised to help in speeding up on housing growth.

And the Strand organization pioneered in providing economy and quality for Detroit builders, particularly along lines of standardized woodwork.

This institution, first, twelve years ago, offered the advantage of cut-to-length trim to the builders of Detroit and vicinity. This eliminated waste in material and waste in labor. It made possible rapid deliveries, more accurate costs, higher quality without added cost, more beautiful and

more convenient homes and houses more quickly built and occupied.

This institution, first, twelve years ago, offered the advantages of machine-sanded trim in sizeable warehouse stocks. This meant a saving in labor from another angle and improved the appearance of homes in which Strand trim was installed.

This institution, first, eleven years ago, offered the present-day frame of interchangeable parts, a step fully as important as those mentioned above.

Then followed in rapid succession other practical innovations in warehouse stocks of stair materials, windows and doors, medicine cabinets, breakfast alcoves, kitchen cabinets, both as complete units and as standardized parts of sufficient flexibility to meet any given building condition. Truly a record of achievement built on a knowledge of the builders' needs and upon a sincere desire to serve.

### Curtis Woodwork Nationally Approved by Architects and Home Builders

In producing woodwork in large quantities the Curtis institution has been able to offer really fine woodwork at costs generally considered low for quality delivered. In addition to employing the best of construction practice, including many exclusive features, distinctive design characterizes every item. Curtis has pioneered in placing within the reach of all, those woodwork forms needed in all housing construction from humble cottage to towering apartment.

The Architect, who conceives the picture, the Builder, who constructs the home, the Carpenter, who handles and installs the woodwork, the Realtor, who sells the finished house and finally the Owner, who lives in and with his Home, all realize and acknowledge the qualities in Curtis Woodwork that give it greater serviceability and utility.

The Architect acknowledges the beauty of design—the work of Trowbridge & Ackerman, New York architects.

The Builder sees the saving in labor, the ease of its use, together with the reasonableness of the cost.

The Carpenter realizes its sound construction, quality in materials and economical installation.

The Realtor immediately seizes the opportunity of quicker resale due to the use of a nationally advertised product of known merit.

The Owner throughout his whole time of living in the home sees daily the beauty, the utility, the low up-keep and "that something" which makes a house a Home.

### Visit Our Main Office and View These Beautiful and Practical Items

To see Curtis Woodwork and to carefully inspect its construction and materials is to know that no extravagant claims are being made regarding its value. To actually run your fingers over its carefully sanded surfaces is to understand just why mechanics like to handle it. A good workman knows the difference.

As yet, not all the items illustrated here are on display. Our entire stock has not arrived, but we are rapidly getting in shape to serve the builders of Detroit with this distinctive product from adequate stocks.

The time to investigate is NOW. Get in on the ground floor and be ready in your next building operation to take advantage of these real values.

Our service men have a most interesting and helpful story: "Putting More Value in a Home." They are eager to make suggestions which mean quicker sales for the builder and greater values for the buyer.

If it isn't convenient today to come to our main yard, 8433 Epworth Boulevard, let us send one of our men to you—but don't overlook your earliest opportunity to inspect these beautiful and practical woodwork items.

## STRAND LUMBER COMPANY

Lumber, Sash, Doors and Woodwork

EAST YARD  
7 Mile Road east of Mt. Elliott  
Phone Lincoln 6997

MAIN YARD AND OFFICE  
Epworth Boulevard at Linsdale  
Detroit, Mich.  
Phone Garfield 6200

WEST YARD  
Division Road north of Warren  
Phone Walnut 2091



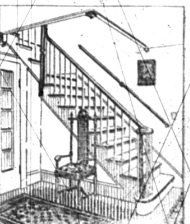
**Curtis Entrance C-100.**  
The entrance strikes the keynote. Here is a typically Colonial doorway of Curtis make. Equally suitable for humble cottages or stately mansion, and for walls of any construction. Other entrances and doors to select from.



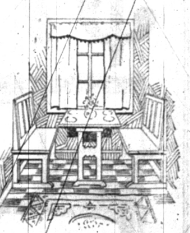
**Curtis Door C-302**  
Curtis doors combine beauty with utility and good construction. This Curtis-made six-panel door follows traditional Colonial design. Solid raised panels. Beautiful—durable—and inexpensive.



**Curtis Linen Case C-813**  
There is a place for everything in the Curtis-equipped home. This handy linen case will be appreciated by the housewife. Two deep drawers. Removable trays with open fronts. May be installed "most anywhere" in the house.



**Curtis Stair Parts**  
This picture gives an idea of the beauty Curtis stair material produces. In our warehouse we will carry full stocks of Curtis stair parts, all thoroughly sanded. Safe delivery assured when wanted.



**Curtis Dining Alcove C-742**  
Detroit housewives, in houses and apartments, like the dining alcove. Seats four comfortably; five, if desired. Table, 30" x 54". May be installed permanently or set anywhere. Adds value to any home. Priced lower than you'd expect.



The Curtis trademark, imprinted on, impressed into or affixed to items of woodwork guarantees the choicest woods, high standards of workmanship and authentic designs. It is the manufacturer's pledge of honest effort. Known throughout the land, it is your safeguard and our guarantee. It carries with it the Curtis Motto: "We're not satisfied unless you are."