



USED CAR DIRECTORY

1923 Overland Touring.
1925 Dodge Roadster.
1924 Durant Touring.
1924 Big Six Studebaker Touring.
1922 Dodge Touring.
1921 8-Pass. Dodge Coupe.
1925 Dodge Touring.
Ford Ton Truck.
1924 Chevrolet Touring.
1923 Paige Brougham.

Other Cars in Good Condition and Representing Excellent Values.

EVANS - JACKSON
119 S. Woodward Ave.
Birmingham Mich. Phone 301

CERTIFIED BARGAINS

Chrysler Sedan, '25
Essex 4 Touring
Maxwell Coupe, '25
Chrysler 6 Roadster, '25

Liberal Payment Plan

WURSTER & STAPLETON
132 W. Maple Ave.
Birmingham Mich. Phone 674

FOR READ WANT ADS TESTICLES

1920 Hupp Touring.
1922 Mercer Coupe.
1922 Jewett Coupe.
1922 Nash Touring.
1923 Nash Roadster.
1923 Gray Touring.
1923 Dodge Touring.

ALL USED CARS IN A-1 CONDITION

BELL BROS. GARAGE
122-East Maple Ave.
Birmingham Mich. Phone 709

Special Sale on New Tourings and Roadsters for Two Weeks.

Dodge Touring—1921
Ford Light Delivery—1923
Chevrolet Touring—1922
Chev. Light Del. Truck.
Ford Touring—1920
Ford 1-ton Truck, new motor just installed.

BERGER SALES
505 North Woodward Ave.
Birmingham Mich.

1924 Ford Touring.
1924 Chevrolet Touring.
1925 Ford Roadster.
1923 Olds Touring.
1 Essex Six Coach, late 1924.
1922 Ford Touring.
1924 Dodge Touring.

EVERY CAR A REAL BUY

BOUGHNER BROS.
132 S. Woodward Ave.
Birmingham Mich. Phone 70

Watch for New Listings Each Week

added Roominess

Buick Master Six Four Passenger Coupe

Come in and try the seating space in the Better Buick. There is more of it—added head room—added leg room—added width in seats for both driver and passengers.

They have made the Better Buick more roomy than other cars of even longer wheel base.

It is a full-sized, man-sized car, for grown-up people to ride in, without being squeezed in.

Come in and try it!

BUICK MOTOR COMPANY, FLINT, MICHIGAN
Division of General Motors Corporation

Better Buick Six Cylinder Valve-in-Head motor cars range in price from \$1125 to \$1995, f.o.b. Buick factories. Among the Buick open and closed models there is one that will meet your desires exactly.

the Better BUICK

ARTHUR ROSE BUICK SALES
PONTIAC

James E. Valentine - Salesman
117 WORTH ST. BIRMINGHAM
At Pontiac Sales Room Every Friday

ESSEX

A Six—Built by Hudson Under Famous Super-Six Patents

\$765

Freight and Tax Extra

for the COACH

And for those who desire an Essex Coach may be purchased for a low first payment and convenient terms on balance

For any closed car you will pay almost as much as the Essex Coach costs. So why accept any performance short of a "Six"? In Essex you get qualities of the "Six" not found in any "Four." And equally important, you get the famous Super-Six advantages exclusive to Hudson-Essex.

Quality made Essex, with Hudson the largest selling "Six" in the world. That volume permits economies, which are passed on to buyers in a price way below any rival.

World's Greatest Values
Everyone Says It—Sales Prove It

BOUGHNER BROS. GARAGE
LOCAL DISTRIBUTORS
120 S. Woodward Ave. Phone 70

"Ford Service" Book Is Given To Dealers

The first move by an automobile manufacturer to establish complete standardization of methods employed in repair service has been made by the Ford Motor Company in a text entitled "Ford Service" which is for distribution to authorized Ford dealers and service stations. The book, which includes about 300 pages, is the culmination of several years of research by Ford engineers. It covers in minute detail with numerous illustrations, every operation in assembling and repairing Ford cars.

Automobile engineers all over the country have long urged that a system of repair methods, standardized by the manufacturer, be worked out to the interest of car owners. Practically no two mechanics follow the same method even on the same operation, they assert. Efficiency may also vary. It is pointed out, and it is an assurance of the highest type of service if in every shop the methods conducive to highest efficiency are employed.

For years the company has maintained a direct and close supervision over its dealers and service stations and with the new text this is strengthened by the inclusion in simple form the approved methods for servicing Ford cars. Publication of the book states that such a procedure in line with the company policy of improving service to Ford owners in every way proven practical.

MORTGAGE SALE

Default having been made the payment of installments of principal and interest due under a certain mortgage made and entered by Dwight T. Strider and Hertha M. Strider his wife, against the Township of Oakland County, Michigan, owned by Nelson B. Strider and Masad T. Strider, of Greenfield, Ohio, as mortgagor, and such mortgage was so made and executed on the 25th day of July, 1924, in the office of the Register of Deeds of Oakland County, Michigan.

And whereas, it is provided in said mortgage that should default be made in the payment of the said principal and interest, or of any part of said principal and interest at the time specified for the payment thereof then, in such case it shall and may be lawful for the said mortgagee to sell the premises described in said mortgage to the highest bidder and on a credit to make and execute a deed of conveyance and to receive the proceeds of said mortgage and to apply the same to the payment of principal and interest due on said mortgage and to retain as having control of the same for a period of six months and to foreclose the same and to determine as to whether he will sell the said premises at Public Sale or otherwise.

And whereas, it is provided in said mortgage that should default be made in the payment of the said principal and interest, or of any part of said principal and interest at the time specified for the payment thereof then, in such case it shall and may be lawful for the said mortgagee to sell the premises described in said mortgage to the highest bidder and on a credit to make and execute a deed of conveyance and to receive the proceeds of said mortgage and to apply the same to the payment of principal and interest due on said mortgage and to retain as having control of the same for a period of six months and to foreclose the same and to determine as to whether he will sell the said premises at Public Sale or otherwise.

Buyer Gets Benefit

"Then, too, Hudson-Essex has basic advantages in being the largest manufacturer of six-cylinder cars in the world and also the world's greatest specialist in enclosed cars, 95 per cent of its volume being in this type of business. This assures the buyer the benefit of the skill of highly specialized workmen and the economies possible where production is concentrated on a single design.

"When this high degree of specialization is added to great volume, you can accomplish extraordinary results—and Hudson has done that.

"This is true economy of the kind which benefits the buyer and it is the policy of Hudson-Essex to pass along to the public these benefits in the form of lower first cost whenever the volume of its constantly increasing business warrants a price reduction.

SALE OF REAL ESTATE

Notice is hereby given that by virtue of the Power of Sale contained in said Mortgage and a certain order of foreclosure pronounced on the 14th day of December, 1925, at the County Court for the County of Oakland in Michigan, that being the place where the Circuit Court for said County of Oakland sits, the premises described in the plat hereinafter referred to, together with the interest therein, shall be sold at Public Sale on the 14th day of January, 1926, at 10 o'clock a. m. at the Court House in the City of Pontiac, Michigan, and the proceeds of said sale shall be applied to the payment of the principal and interest due on said mortgage and to the costs and charges thereon, and the balance, if any, shall be paid to the mortgagor or his assigns.

Lot No. Six, Sixty and Sixty-five (65) of Pontiac Bay, Addition to the City of Pontiac, according to the plat thereof.

Dated July 13, 1925.

ALFRED J. SHANPER, Mortgagee.
(formerly ALICE J. FISK.)

TAKE NOTICE

That I have advanced the sale of above premises to Tuesday, December 1, 1925, at 10 o'clock a. m. (Eastern Standard Time).

ERNEST H. BRITS, Deputy Sheriff.

STATE OF MICHIGAN—In the Circuit Court for the County of Oakland.

Petition of the Oakland Hills Country Club, a Michigan Corporation, for the location of the front line of Section 32, Bloomfield Township, Oakland County, Michigan.

Notice is hereby given that the Oakland Hills Country Club, a Michigan Corporation, has filed a petition for the location of the front line of Section 32, Bloomfield Township, Oakland County, Michigan, according to the plat thereof recorded in Liber 124 of Plats, on page 14, Oakland County Records, except Lots 2 to 19 inclusive thereof, and that said petition will be brought on for hearing on the 30th day of November, 1925, at the opening of Court on said day, or at any thereafter as counsel can be heard.

OAKLAND HILLS COUNTRY CLUB.
By Edward G. Wasey, Secretary.

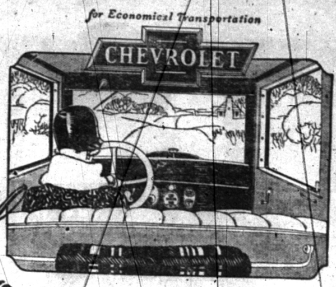
Dated October 24th, 1925.

To the Probate Court for the County of Oakland:

Notice is hereby given that on the 14th day of December, A. D. 1925, I intend to make application to the Probate Court for said county, for an order changing my name from Joseph Henry Barnum to Joseph Henry Chumney.

Dated this 4th day of November, A. D. 1925.

Joseph Henry Barnum, 29-34



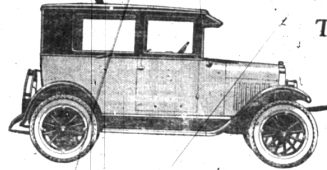
Winter Comfort at Low Cost

To drive in comfort this winter you should have complete protection against rain, sleet, snow and wind. Only the finest closed car construction can give you that.

The Chevrolet Coach body is Fisher-built—the same construction used on the world's finest cars.

Doors and windows fit and stay tight to keep out wind and water. Rain or snow cannot penetrate the Fisher V-V one-piece windshield which gives you perfect vision and ventilation. Long semi-elliptic springs and balloon tires take the jars out of frozen roads. Add to bodily comfort the safety of semi-reversible steering and equalized brakes and the assurance of a motor that always starts easily, and you can realize why Chevrolet spells winter comfort.

Yet you get all this in the world's lowest-priced Fisher Body Coach. Let us show you the quality features of this fine closed car and explain how easy it is for you to own one this winter.



The Coach \$695

Touring Car \$525
Roadster \$525
Coupe \$675
Sedan \$775
Commercial \$425
Express Truck \$550
ALL PRICES F. O. B. FLINT, MICH.

BERGER SALES COMPANY
505 N. Woodward Avenue Phone 851
Open Nights and Sundays Birmingham, Mich.

QUALITY AT LOW COST

105% Ahead!

The entire industry's production of motor trucks increased 23 per cent during the first eight months of 1925.

Graham Brothers Trucks in the same period increased 105 per cent!

A magnificent tribute to Graham Brothers policy of maximum value at minimum cost.

EVANS-JACKSON MOTOR CO.
119 SOUTH WOODWARD AVE.
PHONE 301 Birmingham, Michigan

GRAHAM BROTHERS TRUCKS

SOLD BY DODGE BROTHERS DEALERS EVERYWHERE