

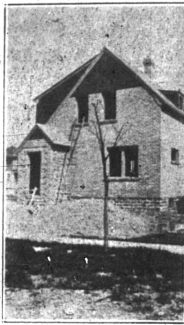
# Real Estate Plans

## This Home May Be Yours!

Here you see pictured a modern home at the corner of Lincoln Avenue and Chester Street, in the village of Birmingham. When completed, with all improvements in this home will be sold for \$8,500. A small payment down, balance on easy terms, is all that I ask for my efforts to build an honest-to-goodness home for some lucky family.

### Tired of Paying Rent?

If you are one of the persons paying out money each month for rent, you may own this house, or one of several others like it, by simply applying what you might pay the landlord. There is no mystery about owning a home, although there is a good deal of pleasure and pride of possession in sleeping beneath your own roof. Time slips by fast, these days; why not invest your monthly rent in a home for yourself—you'll have something of YOUR OWN when you get through.



YOU are passing up a wonderful opportunity if you do not investigate this proposition. I have built many homes in Birmingham, as well as local schools; my record for fair dealing is the best recommendation that I can offer—and I put that kind of effort along with the building material that goes into my homes. Get in touch with me at once to learn how you may stop paying rent and become the owner of your own home.

## FRANK L. CLARK

BUILDER

Room 2, McBride Bldg.

WEST MAPLE AVE. PHONES 105-237

## Woodward Furniture Shop

Upholstering, Refinishing and Repairing of Furniture and all kinds of Musical Instruments  
PAINTING and DECORATING  
Fine line of Samples. Estimates Furnished  
503 North Woodward  
PHONE 945

Remember—Telephone 11 is The Eccentric.  
If We Do It, It Will be "Good Printing."

## VIRGINIA MARKET

MEET US TODAY IN MEATLAND  
and let us exhibit for your appetite encouragement the choicest assortment of meats that ever met the eye half-way on their journey toward a satisfying meal. You will be served politely and your appetite will bring you back again. See if we don't serve you satisfactorily.

OPEN EVENINGS  
Phone 940 - 416 S. Woodward Ave.

## THIS STRONG BANK INVITES AND APPRECIATES YOUR BUSINESS

YOU will enjoy the personal service rendered to each and every one of our many patrons. Our officers are glad at any time to advise you in your business dealings.

SAFETY BOXES TO RENT  
\$3.00 PER YEAR AND UP

## PONTIAC COMMERCIAL BANK

RESOURCES OVER \$16,000,000.00

15,000 High Quality  
**BABY CHICKS**  
Weekly  
Hatching Each Monday and Thursday  
STANDARD BRED HIGH PRODUCTION STRAINS  
Rock Bottom Prices For June and July

100	200	500	1000
Our Special Wyckoff Strain White Leghorns	10.00	47.50	90.00
Barred Rocks and R. I. Reds	12.00	57.50	110.00
White and Buff Rocks and White Wyandottes	14.00	62.50	120.00

Phone your order, or call at hatchery on the Rochester Road at Big Beaver. We will make personal delivery of 100 or more chicks.

**DEAN EGG FARM & HATCHERY**  
R. F. D. No. 4  
BIRMINGHAM  
We also handle Feeds, Brooders, and all equipment necessary for chick raising.

### "South Cranbrook" Is Very Beautifully Platted Development

"It has been many months since the township has been privileged to handle such a beautifully platted development as the new South Cranbrook, which was accepted last week by the state board in Lansing. It was, I would say, the highest priority plat that has ever been handled through the township office, as well as the new George G. Booth plat that has been developed from the former Kingsmith estate on Lane Pine and Cranbrook Roads.

The land lies in the southeast quarter of section 22, and the southwest quarter of section 23, Town 3 North, Range 10 East. It contains, besides the former Kingsmith estate, a portion of the Dowling estate, east across the Cranbrook Road. The plat was accepted by the Township Board at the June meeting and was given the seal of the auditor general in Lansing last week when it was submitted by Mr. J. Bayley, The Booth Realty Co., and Saunders-Colegrove, of Birmingham, are handling the sales of the property.

"The individuality of the plat," said Mr. Bayley, "lies in the planning of the lots themselves, and in the building sites. The plat was not divided so that each lot contained the same number of acres, but rather into subdivisions are, but according to the number of square feet that would be required to give each setting to the individual site. Careful study of the land was made and each lot is supposed to be an excellent building location. The type of the property is so exclusive and the restrictions are high that it is probable that this will develop into one of the highest type residence sections in the community."

There are, in the whole plat, only about 40 lots. The roads are graded and gravelled and the drainage has already been installed.

The development is made particularly desirable by its surroundings. Cranbrook, the Booth home, is to the north of, with a view of the other beautiful surrounding estates, gained by its altitude. Out of the northeast corner of the property enough ground has been reserved to erect the new Christ church and the factory that are to be built at one by Mr. and Mrs. George G. Booth. All of these advantages will be a tendency to encourage a residential type of community.

### SAUNDERS-COLGROVE SELL PURITAN ROAD HOME

Saunders-Colegrove local realtors on South Woodward street, this week closed the sale of the attractive new home on Puritan Road, now being completed by the Bloomfield Builders Incorporated. Mr. and Mrs. Matthew J. Casey have bought the home and expect to be located here about July 1.

The home is a ten-room structure on the colonial order, built of white singles and is one of the group of higher type homes that the Bloomfield builders are erecting in the new section of town.

Mr. Casey is connected with McManus Incorporated, and has been living in Cleveland.

Robert Clayton, also connected with McManus Incorporated, has very recently bought some of the Smith and Poppleton northeast district of the town and expects to settle there at once. The work was made by Saunders-Colegrove real estate firm.

Robert Brewer bought a home site in the South and Poppleton on Highland View this week through Saunders-Colegrove and expects to build at once.

### CARELESS DRIVERS PREY ON THIEVES

More than 4,000 insured cars, representing an investment of \$80,000,000, were stolen in New York state last year. The cheaper cars attract the auto thief more than the expensive ones. In 99 cases out of 100 officials of the insurance companies, declare, when a car is reported stolen the owner in giving information asserts he went into a cigar store to buy a cigar or to telephone, "just a few minutes; when I came out I found my car gone."

### HALF OF FAMILIES NOW OWN AUTOS

Over one-half of the 27,000,000 families in the United States now own automobiles, according to the California State Automobile association. While there are 17,000,000 motor vehicles registered in the country, the automobile association estimates that only 10,000,000 are made for motor trucks, cars owned by business firms and for two or more cars in some families. 14,000,000 actual number of families possessing cars is approx 14,000,000, which should increase substantially during the next few years.

## Anemia

Are you thin? Pale? Often tired? These are signs of impoverished blood which may lead to Pernicious Anemia. Your physician will tell you that Mountain Valley Water, famous mineral water from Hot Springs, Ark., will tend to enrich your blood and that it will assist your kidneys to get rid of the poisons that are sapping your vitality. Don't put it off—order a case today.

### MINER GROCERY CO.

Birmingham Distributors  
Phone 645-647  
—His Deliver—  
Pockard-Gilman Bldg. Co.  
ROOM 4 LEVINSON BLDG.  
Phone 630 - Birmingham, Mich.  
Fresh & Packard - Carl P. Chastain

### TWO NEW HOMES IN STINCHFIELD ACRES

Plans are to be made immediately for two new homes that are to be built in the Stinchfield Acre section in Bloomfield Hills, on two lots recently sold by Saunders-Colegrove. L. Mellen, vice-president of the Royal Oak State Bank has bought one of the lots and is intended to start building operations immediately.

E. S. Bristol, also a Royal Oak man has secured a lot and will likely have his new home under construction before July. Both men are well known in Royal Oak and have many connections here.

### "Birmingham Forest Hills" Is a Desirable Homesite, Says Walsh

"Birmingham Forest Hills," says Jay A. Walsh, president of the Walsh, James & Wasey Co., Realtors, "certainly lives up to its name. It is seldom that any development has had such an instant appeal to the home builder as this property has had."

"Even before the plat had been recorded, advance reservations to the amount of more than a quarter of a million dollars had been made, so that the property is to be wanted to a home there. It is a rare combination of a heavy stand of hardwood timber, high, rolling land, good location, and the assurance of a permanently good neighborhood."

"The location is adjacent to, and directly north of the present village of Birmingham," he faces Adams Road on the East, and extends a half-mile west. The proposal to build a development will be approved by the village at the July election.

"Birmingham Forest Hills is a short distance from the Adams Junior High and Grade School. It is entirely surrounded by a highly respected development and is to be highly restricted itself. The nearby developments show a great interest in building a new going on. All improvement will be made. In fact, the improvements are being made at this time."

"As soon as the Grand Truck tracks have been moved it is proposed to cut a road through to Woodward avenue, making it nearer to Woodward avenue, than any of the east side real estate developments. A majority of the restrictions that have been made so far have been made by Birmingham and Detroit business men who have bought with the thought of building homes for themselves. I feel sure it will be a development of which Birmingham can be proud."

### REAL ESTATE MOVING AT A STEADY PACE

SAYS H. E. COLGROVE

"Birmingham is not having a slump in real estate like so many intimates," says H. E. Colgrove, "it has simply reached its level and is moving along at a steady pace instead of at the terrific pace it kept during the past few years when it was having its first leap forward real development."

"Most of the real estate men out here now are men who were in business when Birmingham had the first rapid growth, and they have been accustomed to business seeking them. Now under the more normal run of things they feel the difference and call it a slump," he continues.

"While I have been acquainted with the growth in Birmingham for a period of years, I have just been in business but a short time here, and, as compared to other localities, the activity in the field here now compares most favorably with other active communities."

### STATE OF MICHIGAN - IN THE CIRCUIT COURT FOR THE COUNTY OF OAKLAND

Edson James, Plaintiff, vs. Larnard Drake, William H. Edwards, and Dyer West, Defendants, and their unknown heirs, devisees, legatees and assigns.

At a session of the Circuit Court for the County of Oakland in the City of Pontiac in and for the County of Oakland, Michigan, on the 15th day of May, 1925.

Present: Hon. Frank L. Covert, Circuit Judge.

In this case it satisfactorily appearing to the court that the estate men out here now are men who were in business when Birmingham had the first rapid growth, and they have been accustomed to business seeking them. Now under the more normal run of things they feel the difference and call it a slump," he continues.

### STATE OF MICHIGAN - IN THE CIRCUIT COURT FOR THE COUNTY OF OAKLAND

Edson James, Plaintiff, vs. Larnard Drake, William H. Edwards, and Dyer West, Defendants, and their unknown heirs, devisees, legatees and assigns.

At a session of the Circuit Court for the County of Oakland in the City of Pontiac in and for the County of Oakland, Michigan, on the 15th day of May, 1925.

Present: Hon. Frank L. Covert, Circuit Judge.

In this case it satisfactorily appearing to the court that the estate men out here now are men who were in business when Birmingham had the first rapid growth, and they have been accustomed to business seeking them. Now under the more normal run of things they feel the difference and call it a slump," he continues.

### STATE OF MICHIGAN - IN THE CIRCUIT COURT FOR THE COUNTY OF OAKLAND

Edson James, Plaintiff, vs. Larnard Drake, William H. Edwards, and Dyer West, Defendants, and their unknown heirs, devisees, legatees and assigns.

At a session of the Circuit Court for the County of Oakland in the City of Pontiac in and for the County of Oakland, Michigan, on the 15th day of May, 1925.

Present: Hon. Frank L. Covert, Circuit Judge.

In this case it satisfactorily appearing to the court that the estate men out here now are men who were in business when Birmingham had the first rapid growth, and they have been accustomed to business seeking them. Now under the more normal run of things they feel the difference and call it a slump," he continues.

### STATE OF MICHIGAN - IN THE CIRCUIT COURT FOR THE COUNTY OF OAKLAND

Edson James, Plaintiff, vs. Larnard Drake, William H. Edwards, and Dyer West, Defendants, and their unknown heirs, devisees, legatees and assigns.

At a session of the Circuit Court for the County of Oakland in the City of Pontiac in and for the County of Oakland, Michigan, on the 15th day of May, 1925.

Present: Hon. Frank L. Covert, Circuit Judge.

In this case it satisfactorily appearing to the court that the estate men out here now are men who were in business when Birmingham had the first rapid growth, and they have been accustomed to business seeking them. Now under the more normal run of things they feel the difference and call it a slump," he continues.

### STATE OF MICHIGAN - IN THE CIRCUIT COURT FOR THE COUNTY OF OAKLAND

Edson James, Plaintiff, vs. Larnard Drake, William H. Edwards, and Dyer West, Defendants, and their unknown heirs, devisees, legatees and assigns.

At a session of the Circuit Court for the County of Oakland in the City of Pontiac in and for the County of Oakland, Michigan, on the 15th day of May, 1925.

Present: Hon. Frank L. Covert, Circuit Judge.

In this case it satisfactorily appearing to the court that the estate men out here now are men who were in business when Birmingham had the first rapid growth, and they have been accustomed to business seeking them. Now under the more normal run of things they feel the difference and call it a slump," he continues.

### Wormer & Moore Will Build New Real Estate Office

Wormer and Moore, local real estate dealers, have very recently purchased the Richard Lemke property at 301 South Woodward avenue, and will begin operations at once for the construction of a new office. Wormer and Moore are now located in the Levinson building. The plans submitted for the office indicate it will be a very modern and complete structure.

The new office is said to be the result of the growth of the suburban department under Richard L. Maxon and the broadening of its scope of activity. The suburban department deals in suburban subdivisions and acreage in Bloomfield Hills, Farmington and Rochester as well as improved and vacant property in Birmingham. The office here, it is expected, will be the suburban headquarters and will be built sufficiently large to accommodate such offices. At the present time they are working on the new 436. This will be left on the property and the new offices built in front, close to the street.

The Wormer and Moore organization was established in 1919 by Clark and Moore, Wormer, Jr., and Lucian S. Moore, Jr., with the intention of devoting their entire efforts to the sale and lease of central business property and high grade residential property in Indian Village and Grand Point.

With the growth of the organization and the broadening of its scope of activity, Kenneth Moore and Paul Maxon became members of the firm. They now have a personnel of more than 70 people, offering a diversified realty service through six separate and distinct departments.

Many factors have been instrumental in the success of Wormer and Moore, it is said, but probably most important are the high standards of ideals and quality which were established by the founders at its inception.

### STATE OF MICHIGAN - CIRCUIT COURT FOR THE COUNTY OF OAKLAND IN

Security Trust Co. and Cora B. Hanes, Plaintiffs, vs. Elizabeth Daily, et al., Defendants.

A session of said Court held at the Court House in the City of Pontiac, on the 27th day of May, 1925.

Present: Hon. Glenn C. Gillespie, Presiding Judge.

In this case it satisfactorily appearing to the court that the estate men out here now are men who were in business when Birmingham had the first rapid growth, and they have been accustomed to business seeking them. Now under the more normal run of things they feel the difference and call it a slump," he continues.

### STATE OF MICHIGAN - CIRCUIT COURT FOR THE COUNTY OF OAKLAND IN

Security Trust Co. and Cora B. Hanes, Plaintiffs, vs. Elizabeth Daily, et al., Defendants.

A session of said Court held at the Court House in the City of Pontiac, on the 27th day of May, 1925.

Present: Hon. Glenn C. Gillespie, Presiding Judge.

In this case it satisfactorily appearing to the court that the estate men out here now are men who were in business when Birmingham had the first rapid growth, and they have been accustomed to business seeking them. Now under the more normal run of things they feel the difference and call it a slump," he continues.

### STATE OF MICHIGAN - CIRCUIT COURT FOR THE COUNTY OF OAKLAND IN

Security Trust Co. and Cora B. Hanes, Plaintiffs, vs. Elizabeth Daily, et al., Defendants.

A session of said Court held at the Court House in the City of Pontiac, on the 27th day of May, 1925.

Present: Hon. Glenn C. Gillespie, Presiding Judge.

In this case it satisfactorily appearing to the court that the estate men out here now are men who were in business when Birmingham had the first rapid growth, and they have been accustomed to business seeking them. Now under the more normal run of things they feel the difference and call it a slump," he continues.

### STATE OF MICHIGAN - CIRCUIT COURT FOR THE COUNTY OF OAKLAND IN

Security Trust Co. and Cora B. Hanes, Plaintiffs, vs. Elizabeth Daily, et al., Defendants.

A session of said Court held at the Court House in the City of Pontiac, on the 27th day of May, 1925.

Present: Hon. Glenn C. Gillespie, Presiding Judge.

In this case it satisfactorily appearing to the court that the estate men out here now are men who were in business when Birmingham had the first rapid growth, and they have been accustomed to business seeking them. Now under the more normal run of things they feel the difference and call it a slump," he continues.

### STATE OF MICHIGAN - CIRCUIT COURT FOR THE COUNTY OF OAKLAND IN

Security Trust Co. and Cora B. Hanes, Plaintiffs, vs. Elizabeth Daily, et al., Defendants.

A session of said Court held at the Court House in the City of Pontiac, on the 27th day of May, 1925.

Present: Hon. Glenn C. Gillespie, Presiding Judge.

In this case it satisfactorily appearing to the court that the estate men out here now are men who were in business when Birmingham had the first rapid growth, and they have been accustomed to business seeking them. Now under the more normal run of things they feel the difference and call it a slump," he continues.

### STATE OF MICHIGAN - CIRCUIT COURT FOR THE COUNTY OF OAKLAND IN

Security Trust Co. and Cora B. Hanes, Plaintiffs, vs. Elizabeth Daily, et al., Defendants.

A session of said Court held at the Court House in the City of Pontiac, on the 27th day of May, 1925.

Present: Hon. Glenn C. Gillespie, Presiding Judge.

In this case it satisfactorily appearing to the court that the estate men out here now are men who were in business when Birmingham had the first rapid growth, and they have been accustomed to business seeking them. Now under the more normal run of things they feel the difference and call it a slump," he continues.

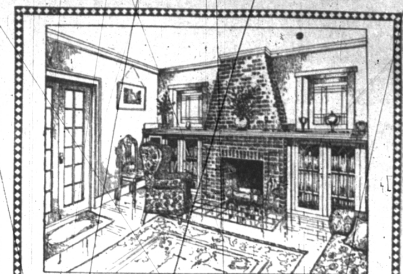
### STATE OF MICHIGAN - CIRCUIT COURT FOR THE COUNTY OF OAKLAND IN

Security Trust Co. and Cora B. Hanes, Plaintiffs, vs. Elizabeth Daily, et al., Defendants.

A session of said Court held at the Court House in the City of Pontiac, on the 27th day of May, 1925.

Present: Hon. Glenn C. Gillespie, Presiding Judge.

In this case it satisfactorily appearing to the court that the estate men out here now are men who were in business when Birmingham had the first rapid growth, and they have been accustomed to business seeking them. Now under the more normal run of things they feel the difference and call it a slump," he continues.



### "Home Interprets Heaven"

That's the way Parkhurst expresses the sentiment of real home. And Channing says, "Home is the chief school of human virtue." It matters not how elegant that home is, it is the spirit of the home that gives it the charm.

The house that is to be a real home needs every consideration to make it express the real spirit of the home.

It is far better to have a modest cottage 'home' than a mansion 'house,' and a modest cottage can now have all the modern conveniences and comforts of home, just as well as the mansion can.

Let us help you plan your new home. Copy our practical experience and knowledge of construction with your desire for room arrangement and conveniences, to put the true home spirit into your new structure.

Our NEW BOOK OF HOME PLANS will help you in your selection of designs. Drop in and get your copy.

**R.C. Moulthrop Lumber Co.**  
LUMBER AND BUILDERS SUPPLIES  
BIRMINGHAM, MICHIGAN



**MULE-HIDE**  
NOT A KICK IN A MILLION FEET  
ROOFING AND SHINGLES

Yes Sir--

We have just been appointed the exclusive guardian of "Tom Lech's Mule and all his Little Mules" in the Detroit territory. A lot of you know this Mule by its reputation, but for those who do not, it is the best that's not made here. Yet it doesn't cost more than inferior mules.

The next time you are in the market for roofing, building paper, or felt, let us show you how "Mule-Hide" is made, and tell you why it is so highly interesting to know just what processes this material goes through; we have a Process Folder showing the various photographs as well as samples of the material in different stages of manufacturing; and remember it's

"NOT A KICK IN A MILLION FEET"

One Shingle—One Roll—or a Trainload and Still It's

**SERVICE LIKE A FLASH**  
5 BIG YARDS  
HARTWICK LUMBER CO.

GEO. G. STEELMAN, Wholesale and Retail  
Mfr. Bham Office (Main Office)  
128 North 661 Clay Ave., Detroit, Mich.  
Woodward Avenue. Phone 6606 0688  
Residence Bham 975  
H. C. Archanbeau  
Phone 623

For Confidence, Safety, Dependability, and Service Buy Real Estate and Insurance from

**BIRMINGHAM, SPARKS & BINGHAM**  
REAL ESTATE AND INSURANCE  
C. A. Bingham  
C. A. Sparks  
H. K. Bingham  
T. B. McCutcheon  
H. C. Page  
H. J. Archanbeau

132 S. Woodward - Tel. 985