



"DON'T KILL YOUR WIFE—
LET US DO YOUR DIRTY WORK"

Our Wagons are in Birmingham Tuesdays,
Thursdays and Saturdays

Rough Dry 10c lb. — All Flat Work Ironed

Pontiac Laundry Co.

We Use Only Pure Filtered Soft Water

30-32-34 Patterson Street

347—Phone Pontiac—1200

OAKLAND TESTS AID TO OWNERS

"The modern motor car manufacturer is keeping pace with modern medical science; paralleling numerous tests, such as the Wassermann test, blood pressure tests, etc., by the use of highly developed mechanical devices to learn the definite worth and service of every part of the automobile," asserts F. M. Holden, assistant chief engineer of the Oakland Motor Car company, formerly director of the General Motors proving ground.

"As a result, the Oakland Six withholds no secrets from the searching, scientific measuring instruments used to determine accurately the value and efficiency of the many parts of the car."

Two noteworthy devices, one of accurately measuring and recording acceleration of motor cars and another for deceleration when brakes are applied, are examples of the finely developed mechanisms used by the Oakland engineering department at the General Motors proving ground. Stop watches and the finest speedometers failed to provide the fine limits of accuracy demanded.

From this experience, Mr. Holden says: "One of the chief values of the General Motors proving ground is the elimination of that part of new car experimentation which formerly fell to the lot of the new car owners. This has been particularly noticeable during the past two years in the instances of the many refinements and improvements which were made in Oakland cars."

"We have a great deal nowadays about car values, but comparatively few enjoy that added value factor which is found in Oakland cars as the result of the proving ground tests and which means dollars upon dollars saved to their owners."

Chevrolet Now Has 10 Service Schools

The Chevrolet Motor Company, expanding its policy of assuring long years of driving satisfaction through proper service, has added three more units to its chain of service schools.

There are now ten schools in various parts of the country, each in charge of two highly skilled instructors. It is axiomatic that there always is one right way and several wrong ways of doing anything. The Chevrolet instructors teach that right way. Their classes are small—not more than six or eight men—to permit of individual attention. Each week the ten schools return to the service organization between 60 and 80 graduates, auto mechanics whose specialized knowledge of the car and its servicing equipment eliminates the element of chance and guesswork.

"Improper fitting of a motor part may cause expensive damage to any automobile," declares C. E. Baldwin, director of Chevrolet parts and service department. "But when a man leaves one of our schools he is a precision mechanic. He does not guess; he knows. He has knowledge of the Chevrolet mechanism undiminished in any other way."

The seven original service schools were established last summer at each of the Chevrolet assembly plants in the United States located at the following cities: Flint, Mich.; Tarrytown, N. Y.; Buffalo, N. Y.; Norwood, O.; St. Louis, Mo.; Janesville, Wis.; and Oakland, Calif. The success of this group resulted recently in the establishment of three additional schools at Dallas, Texas; Denver, Colo.; and Portland, Ore., for service men in territory geographically removed from the assembly plant schools.

A chief instructor travels constantly from one school to another. In the schools are Chevrolet chassis, used motor, axle and transmission assemblies upon which the students work with Chevrolet precision equipment. Often a motor is intentionally disabled and then placed in perfect order.

The students come from the service departments of the 1,000 dealers and the many associate dealers. The intensive course lasts one week. Shop foremen predominate but many subordinate mechanics also attend the schools. Only Chevrolet men are accepted as students.

Another angle in the work of giving the owner the ultimate in driving satisfaction is the service production department, also under Mr. Baldwin. This department sends experts to suggest improvements in shop practice and arrangement that patrons may obtain maximum speed and accuracy in servicing.

"This combination of service training for the men and installation of intelligent shop methods is causing a growth of the flat rate service plan among Chevrolet service stations," says Mr. Baldwin. "Proper training enables the men to determine exactly what a particular service will cost. Thus they can give the owner a price before they start the work. The plan is of mutual benefit to dealer, service man and car owner."

ENGLISH EXPERTS PRAISE PACKARD

Packard Six and Eight cars, now equipped with chassis lubrication systems and motor oil rectifiers, have drawn much favorable comment from English motor experts, word received at the Packard Motor Car company factories indicates.

It is a custom in London for motor car experts of the newspapers to test new cars as they are introduced to the public and give their impressions in their papers. The new Packards have just made their appearance in England and have been undergoing the customary newspaper tests.

"To those who appreciate what a messy and awkward job the lubrication of a chassis is," writes H. Massac Buis in the London Morning Post, "the mere fact that you can oil this eight-cylinder-in-line engine Packard car while you are actually driving is a fact that suggests even a truer notion of the luxurious nature of the motoring offered by this new type than does the mere mention of the number of the cylinders employed."

Commenting further on one of the new engines, Mr. Buis says: "The impression given me by its performance is that this is the finest chassis ever issued by the Packard factory, and to express higher praise of a trans-Atlantic motor car is scarcely possible. Undoubtedly, for luxurious motoring, the eight-cylinder-in-line engine is a type which will be much more in evidence during the next few years."

Packard-Charlton Bldg. Co.
ROOM 4 LEVINSON BLDG.
Phone 630 - Birmingham, Mich.
Frank S. Packard Cecil F. Charlton

The Four Major Reasons

To those familiar with the chief reasons for Graham Brothers remarkable growth, these four points loom most conspicuously in explanation of their leadership and lower prices:

1. Price advantage.
2. Exceptional quality.
3. Power and dependability of Dodge Brothers Engine.
4. Character of Dodge Brothers Dealer organization.

Better than a written guarantee of continuous satisfaction, these reasons are too fundamentally important to escape the attention of judicious truck buyers.

Evans-Jackson Motor Co.

119 SOUTH WOODWARD AVE.

PHONE 301

Birmingham, Mich.

GRAHAM BROTHERS TRUCKS

SOLD BY DODGE BROTHERS
DEALERS EVERYWHERE

for Economical Transportation

CHEVROLET



Easy to Drive

Easy to start—easy to steer—light
pedal action—easy to shift gears
—easy to ride in—easy to stop.

Touring	\$525	Coach	\$735	Express	
Roadster	\$525	Sedan	\$825	Truck Chassis	\$550
Coupe	\$715	Commercial	\$425	ALL PRICES F.O.B.	
				FLINT, MICH.	

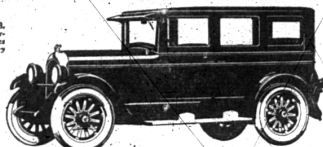
Let us demonstrate these facts to your utmost satisfaction

BERGER SALES CO., 505 N. Woodward Ave.

QUALITY AT LOW COST

The New CHRYSLER FOUR

Sedan \$1095 F. O. B.
Detroit, tax extra, Four-
wheel hydraulic brakes
optional. Body by
Fisher.



Greeted as a Great Contribution to 4-Cylinder Motoring

As anticipated the new Chrysler Four is being received with unrestrained enthusiasm.

Those who have been fortunate enough to ride in the new car declare that never before has there been a four that delivers so much in fine performance, so much in roadability and riding and driving ease.

For the Chrysler Four is a true companion to the Chrysler Six. It represents in a very definite and practical sense the application of the same quality and

\$895
Touring Car
F. O. B. Detroit, tax extra

fine manufacture that raised the Chrysler Six to its peak of popularity.

Consequently it is not surprising that the new Chrysler Four is already hailed as the most modern and soundest contribution to finer four-cylinder motoring.

See it—ride in it—drive it! Call on us—we are only too glad to extend you the opportunity to learn at first hand the many advantages of owning a new Chrysler Four.

First car of its price with the option of hydraulic four-wheel brakes at slight extra cost. Closed bodies by Fisher.

Touring Car, Club Coupe, Coach and Sedan—attractive prices from \$895 to \$1095, F. O. B. Detroit, subject to current governmental tax.

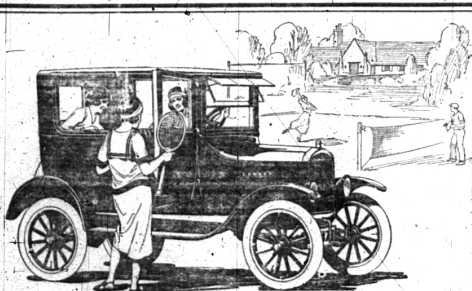
There are Chrysler dealers and superior Chrysler service everywhere. All dealers are in position to extend the convenience of time payments. Ask about Chrysler's attractive plan.

Chrysler motor cars are now delivered insured for one year at full factory list price against fire and theft.

WURSTER & STAPLETON

129 W. MAPLE AVE. — PHONE 674

Service Station back of Post-Office



School Is Out

Vacation time has come at last! Millions of families will take advantage of Ford ownership to four this summer.

Wherever you live the roads invite you to travel. You can tour every day if you own a Ford car. You can take short trips or long trips, anywhere, any time, any weather. A Ford car

will make this summer a happier, healthier one for the whole family. And it costs no more for five to ride than for one.

Low prices and easy payments bring the Ford car within the means of nearly every household. It is the most profitable investment you can make with your vacation savings.

Ford

Runabout — \$260 Coupe — \$520

Touring Car — \$290 Fordor Sedan — \$660

On open cars demountable rims and starter are \$35 extra.

Full-size balloon tires \$25 extra. All prices F. O. B. Detroit.

SEE ANY AUTHORIZED FORD DEALER OR MAIL THIS COUPON

Tudor Sedan
\$580
F. O. B. Detroit

Please tell me how I can secure a Ford Car on easy payments:

Name _____

Address _____

City _____ State _____

Mail this coupon to **Ford Motor Company**, Detroit