

AUTOMOBILES

The same finish used on 25 leading automobiles available for Your car

DUCO, the finish developed by the Du Pont Company, has so proved its unusual durability and beauty, that it has been adopted by twenty-five leading car manufacturers. It is the first time that any one product has been adopted by such a large group—covering every price class.

This same Duco is available for refinishing your car—applied by the same Du Pont system used in the large factories.

- 1 Fenders, tires, bumpers, etc., are removed; all glass and upholstery protected.
- 2 The old finish is painstakingly removed leaving chemically clean, bare metal.
- 3 A smooth surface (filling dents, scratches, fill marks, etc.) is secured with a number of coats of primer, putty, glaze, sanding surface, etc.
- 4 Several coats of Duco are sprayed on by carefully trained experts.
- 5 The Duco is rubbed smooth—to be finished either dull, satin gloss or polished.

The result is a finish which is waterproof, weatherproof, wearproof—one which will remain attractive indefinitely.

Bring in your car now and we will deliver it to you "good looking as new" in about ten days.

Let us put Duco on your car now!

Bloomfield Automobile Co.
PHONE 550 113 BROWNELL STREET
Birmingham, Mich. (Near East Maple Avenue)

MOTOR TRIPS ABROAD In Rome, Wonder City ONE OF A SERIES OF TRAVEL TALKS



Photo Courtesy Chrysler Corporation

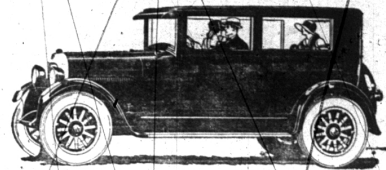
ROME has been described as the most marvelous city in the world. It is just what Here an American, with his Chrysler Six, has stopped in front of St. Peter's, one of the most famous churches in all the world. It stands on the site of the Forum of Nero, where many Christians were martyred and where St. Peter is said to have been buried after his crucifixion. In the background is the Palace of the Vatican, which has been the residence of the Popes since their return from Avignon.

Time From Chicago To Los Angeles Cut

Over roads which had been washed out by cloud bursts, Samuel Klein, Chicago jeweler, has just set Chicago to Omaha, Nebraska, was up a new automobile road record covered in 12 hours and 45 minutes between Chicago and Los Angeles. The time taken in running both to Davenport and Omaha are claimed as new records. Another record is off the previous best elapsed time for the run of 1,172 miles for an automobile between the two Colorado Springs in 45 hours cities, according to advices reaching elapsed time.

The run was made in a Packard. Mr. Klein had three relief drivers who went the distance with him. The actual running time for the car which Mr. Klein had driven previously a total of 40,000 miles. It was exactly 80 hours after he left of the fastest train and the route Chicago that he was officially checked, was approximately 300 miles farther at the end of the run in Los than the rail route.

How this One-Profit Coach is built by Studebaker on the sturdy STANDARD SIX CHASSIS



SUPERFICIALLY other coaches may resemble this Studebaker Standard Six, but the resemblance will not stand analysis.

Only two cars are made on a one-profit basis—Ford in the lowest price field and Studebaker in the fine car field. Only in these two cases are all bodies, engines, clutches, gear-sets, springs, differentials, steering gear and axles designed, engineered and manufactured by one company.

Contrast this with the average car, where the extra profits of many outside parts and body makers must be included in the purchase price.

These profits are part of the production cost of the car—the same as the steel and wood of the body. They do not buy materials nor workmanship—they do not make any car one whit better.

Studebaker has achieved one-profit manufacture through years of far-sighted management and through sacrifice on the part of stockholders. Earnings which might have been distributed have been retained in the business to build one of the largest gray iron foundries in the world, to erect stamping mills, forges, etc., to purchase the finest labor-saving machinery, to construct enormous body-building plants.

As a result, resources totaling one hundred million dollars are concentrated upon the production of one-profit automobiles such as this Standard Six Coach.

What does it mean to you?

To you, as an automobile buyer, this means:

1. A Lower Price.
2. A Better Car.

A LOWER PRICE, because Studebaker does not need to pile its profit upon the profits of outside parts manufacturers and body builders.

A BETTER CAR, because it is a thoroughly coordinated, harmonious unit. Every part designed,

engineered and manufactured under one management, to work more efficiently with every other part.

A better car because Studebaker can afford to use finer upholstery, better steel, higher grades of lumber, more painstaking workmanship in hundreds of unseen places.

Scores of thousands of miles of excess transportation are built into every Studebaker. When the car which looked like an equal value while it was new, is breaking up, the Studebaker is breaking in.

That is why in Arizona—out where desert heat and rugged mountain trails test automobiles to the utmost—Studebaker sells double its normal proportion of cars. Every county in Arizona which has bought an automobile for its sheriff has bought a Studebaker.

This coach is not a one year car

As a splendid example of the facts stated above, we offer the Standard Six Coach. To appreciate this car you must see it and ride in it. We urge you to do so immediately. It is called a coach, but it is really a roomy five-passenger coupe.

It is a car that will give you faithful economical service. It is built to yield dependable, comfortable transportation for years and years.

Buy now—no more "yearly models"

This is the time of the year when men have hesitated to purchase an automobile, fearing that the car they bought in July would be made obsolete artificially by the announcement of new yearly models in August or September. Studebaker has disregarded the custom of presenting yearly models. Instead, Studebakers will be kept up to the minute in body styles and chassis design regardless of the calendar.

Come in NOW—and see this sturdy, dependable, one-profit Coach.

WURSTER & STAPLETON

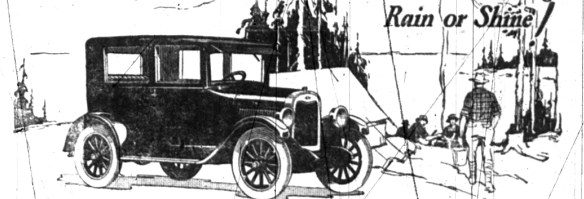
129 W. MAPLE AVE. - PHONE 674
Service Station back of Post-Office

THIS IS A STUDEBAKER YEAR

for Economical Transportation



A Chevrolet Coach for Vacation Time—Comfortable touring Rain or Shine!



THE Chevrolet Coach will add comfort and protection to your vacation adventures on the road. All its windows open with Tenset regulators and it has a one-piece ventilating windshield to provide the airiness of an open car—yet it is dry and snug during the inevitable rainy day.

A fine quality car selling for only

\$735

L.S.B. Flint, Mich.

The World's Lowest Priced Fisher Body Coach!

Prices of Other Models

Touring Car	\$525
Roadster	\$525
Coupe	\$715
Sedan	\$825
Commercial Chassis	\$425
Export Truck Chassis	\$550

ALL PRICES F.O.B. FLINT, MICH.

You'll find a Chevrolet easy to ride in and to drive and you'll like the way it holds the road. Its sturdy construction is typical of the highest priced cars and it is truly beautiful in appearance.

Call on us for a demonstration and ask us to explain the Chevrolet easy purchase plan.

Berger Sales Company

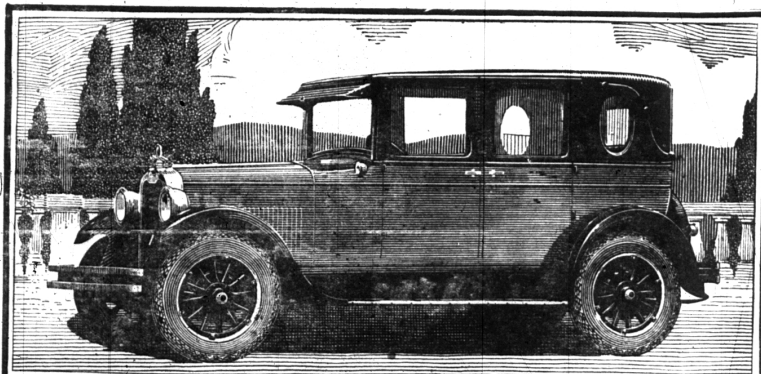
Open Nights and Sundays

Birmingham, Mich.

505 N. Woodward Avenue

Phone 851

Quality at Low Cost



Announcing

Smart New Motor Cars—new bodies by Fisher—low, racy lines—hood and body beading—lower running boards and fenders—rich, distinctive new color combinations in enduring Duco—newly designed nicked radiator and special head and cowl lamps—all combine to inspire admiration.

Over 100 Improvements and Refinements

Oakland Six owners everywhere have expressed surprise that a car so powerful and spirited should operate so smoothly and quietly. And yet this car has been still further bettered by more than 100 improvements and refinements—including Oil Filter, perfected full pressure Oiling System, larger Crankshaft and Bearings, Air Cleaner, Four-wheel Brake refinements, still larger Balloon Tires and many other features of advanced engineering which contribute to the outstanding value of the car.

The Harmonic Balancer A vitally important and exclusive Oakland feature, the result of years of intensive research and development by Oakland and General Motors engineers—renders the Oakland Six engine positively unmatched in the absence of vibration at all speeds. It establishes Oakland even more firmly than ever as the outstanding leader in advanced engineering.

~and New Prices ~\$70 to \$350 lower Oakland's much lower prices would themselves make this announcement one of the most important of the year. Considering the many important refinements which have been added to a car already unmatched in appearance and performance, the new prices are all the more impressive.

Come in—see the new Oakland Six—drive it—study the remarkable Harmonic Balancer—get the new lower prices—see why Oakland is more than ever the outstanding leader in its field.

BLOOMFIELD AUTOMOBILE CO.
PHONE 550 113 BROWNELL STREET
(Near East Maple Avenue) Birmingham, Mich.

OAKLAND SIX

WINNING AND HOLDING GOOD WILL

PRODUCT OF GENERAL MOTORS