

## PALMER, BLACKMER &amp; CO.

DRY GOODS, LADIES' and CHILDREN'S  
WEAR, MEN'S FURNISHINGS

First National Bank Block  
Birmingham, Mich.

## Mr. W. D. Clizbe

Telephone 190

Residence: 430 WEST MAPLE AVE.

has bought four new houses from  
himself.

How's that?

Well, he built four houses and put  
into them such good material and  
every modern thing that they can't  
be sold for what they cost, so he  
turns them into permanent invest-  
ment account and will RENT them  
at once.

## Never Before a Value Like This

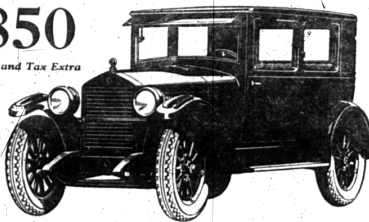
The Super-Six principle exclu-  
sive to Hudson and Essex, is  
responsible for the largest sell-  
ing 6-cylinder cars in the world;  
because it gives results in  
smooth, brilliant action, reli-  
ability and economy never

attained by any other type.  
This Essex, in all ways, is the  
finest ever built. Easier riding  
and driving, more flexible in  
performance, handsomer in  
line and finish, it is also lower  
in price than ever before.

## ESSEX COACH

\$850

Freight and Tax Extra



HUDSON-ESSEX WORLD'S LARGEST SELLING 6-CYLINDER CARS

BOUGHNER BROS. GARAGE  
LOCAL DISTRIBUTORS

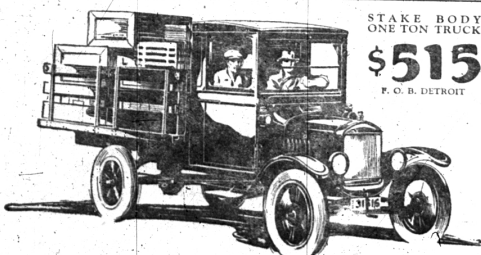
120 S. Woodward Ave.

Phone 70

STAKE BODY  
ONE TON TRUCK

\$515

F. O. B. DETROIT



## Ford Truck Display Week

July 13th to July 18th

Special Show-  
ing and Dem-  
onstrations of  
the Full line of  
Ford-built All-  
Steel Bodies

on the

**Ford**  
Chassis

Go to the nearest Authorized Ford Dealer this week and see  
the display of Ford Trucking Equipment and the full line of  
Ford-built All-Steel bodies on the Ford chassis. This is an  
exceptional opportunity to learn how Ford equipment can  
bring a new economy into your business. Special demonstra-  
tions of Ford Trucks and their application to your business  
will be arranged.

Over a million Ford Trucks and Light Delivery Cars are in  
service today. Chassis and body alike possess those built-in  
qualities of strength and durability that are identified with all  
Ford products.

Don't fail to visit this interesting and valuable display. It will pay  
you to go now—this week—while the complete line is on display.

**Ford Motor Company**  
Detroit  
CONANT & OSBORNE  
Local Dealers

**Ford**

TRUCKS and DELIVERY CARS

## The week's Records

### Records by Three Orchestras

Paul Whiteman's Jan Garber's and  
the Victor Salon Orchestra make the  
record offering this week. White-  
man's and Garber's are quite natu-  
rally dance records, the first one set-  
ting down two fox trots in his char-  
acteristic symphonic style.

"Let Me Longer Longer Is Your  
Love" and "Steppin' in Society" are  
two separate quartets of brasses and  
saxes, with occasional and stunning  
salvos of the full line-up of wind  
instruments.

Garber's men lead off with a gentle  
melody, "By the Light of the Stars"  
but when they get around to "Stran-  
gely" and "I'm in Your Dreams" with  
delicacy and sweetness, the strings  
predominate.

KELSEY & GARRETSON  
PRESCRIPTION PHARMACISTS

Drugs

PHONE 766

112 North Woodward Ave.

### Chevrolet Is Breaking Last Year's Records

Detroit, Mich., July 15.—The  
Chevrolet Motor Company, having  
established a successful production  
records for April, May and June,  
will exceed by August 20 the total  
production for the entire year of  
1924, it is announced by R. H.  
Grant, general sales manager.

Chevrolet production during 1924  
was 205,201. During the first six  
months of 1925 the total production  
reached 246,081 or only 59,222 un-  
der the aggregate for the preceding  
years.

The company produced 54,944  
motor cars and trucks during June,  
exceeding any previous June in its  
history. The total for the month  
was exceeded by only one month of  
Chevrolet production, October of  
1923. Sales to dealers during June  
were 54,725. At the end of June  
there still remained 24,654 unshipped  
retail orders in the hands of dealers.  
"I stated recently that the motor car  
industry was becoming stabiliz-  
ed," said the undersigned peaks and  
depressions of production were being  
flattened out," said Mr. Grant.  
This statement is substantiated by the  
Chevrolet production figures for the  
last three months.

"In April we produced 52,236  
cars and trucks in May 52,853 and  
in June 54,944. Thus we have a  
variation of only 2,708 units be-  
tween the lowest and highest of the  
three months. And of even greater  
significance is the fact that our pro-  
duction crept up, instead of down,  
during a period in which past ex-  
perience has led manufacturers to  
expect a decided decrease."

"Another significant figure is con-  
tained in the statement of the Na-  
tional Automobile Chamber of Com-  
merce that the May 1925 Chevrolet  
sales were 238.6 per cent of those  
for May 1924."

### Studebaker Gives Pledge To Public On Used Cars

Square deal merchandising of used  
motor cars, established by the  
Studebaker Corporation, ends  
any uncertainty attending the pur-  
chase of a used car, declares Ted  
Wurster of Wurster & Stapleton,  
local dealer, who was one of the first  
to sign the nationally adopted Stude-  
baker Pledge to the Public on Used  
Car Sales.

In signing this pledge, Studebaker  
dealers agree to the following:

1. All used cars offered to the  
public shall be honestly represented.  
2. All Studebaker automobiles  
which are sold as CERTIFIED CARS  
have been properly reconditioned,  
and carry a 30-day guarantee for re-  
placement of defective parts and  
free service on adjustments.

3. Every used car is conspicu-  
ously marked with its price in plain  
figures, and that price, just as the  
price of our new cars, is rigidly  
maintained.

4. Every purchaser of a used car  
may drive it for five days, and then,  
if not satisfied for any reason turn  
it back and apply the money paid as  
a credit on the purchase of any other  
car in stock—new or used.

To sell unneeded transportation  
rather than used cars is the keynote  
of the Studebaker pledge plan. It is  
generally recognized that many cars  
are traded in on new cars before  
their full worth has been exhausted.  
This is especially true with Stude-  
baker cars, hundreds of which show  
records of 100,000 to 200,000 miles  
and some even as high as a half mil-  
lion miles of service. Yet the aver-  
age car turned in has been driven  
but 28,000 miles.

To take advantage of this reserve  
transportation, most of the Stude-  
bakers taken in trade are repainted  
and otherwise reconditioned before  
being offered for sale. These are  
known as "certified axes" and carry  
a guarantee of 30 days' free service  
on adjustment and replacement of  
defective parts.

"The Studebaker Pledge to which  
we have unconditionally subscribed  
is the most progressive step ever tak-  
en by any automobile concern," said  
Mr. Wurster of the local Studebaker  
organization in commenting on the  
common sense method adopted by  
the Studebaker factory for regulat-  
ing the sale of used cars. "It enables  
the purchaser to know exactly what  
he is buying, and to purchase with  
the full assurance that we stand  
squarely behind the car he buys from  
us."

### OAKLAND TO ANNOUNCE NEW MODELS WITH HARMONIC BALANCER

Smart New Bodies and Many  
Mechanical Refinements Are  
Featured.

R. H. Carson, local Oakland dealer,  
has received advance information  
that the Cleveland Motor Car com-  
pany will announce shortly a new  
line of Oakland six cylinder cars,  
featuring smart new bodies by  
Fisher and many mechanical re-  
finements, including the Harmonic  
Balancer, an exclusive engineering  
development.

It has been known for some time  
that Oakland and General Motors  
research engineers have been work-  
ing on a new device known as the  
Harmonic Balancer, which is said to  
be an outstanding engineering con-  
tribution in producing better  
engine performance.

Mr. Carson expects to have full  
details within a week when the new  
cars will be displayed for the first  
time in his showroom.

A revision of prices on all models  
is contemplated and it is said that  
the new prices will be from \$70 to  
\$510 lower.

The Oakland division of General  
Motors has been steadily forging to  
the front during the last four years  
and it is believed that the contin-  
ued increased production due to  
large anticipated sales during the  
coming fiscal year is responsible for  
the bringing down of prices on the  
new cars, even in the face of the  
many improvements in bodies and  
engineering features that are to be  
made.

TO WHOM IT MAY CONCERN

Notice is hereby given that I, A. W.  
Spencer, County Drain Commissioner of the  
County of St. Louis, in the office of the said  
Drain Commissioner an order designating

drainage district for the Bloomfield Village  
drain according to Act No. 115, P. A. of  
Michigan 1921.

The route and course of said drain is as follows:

**BLOOMFIELD VILLAGE DRAIN**  
Beginning at station 2 plus 0 in the N.  
W. corner of Section 36, Township 2 N.,  
Range 10 E. at the intersection of River  
Road and an existing ditch running from the  
northwest said intersection being 1079 ft.  
to station 1 plus 0. thence S. 23° E. 1079 ft.  
to station 2 plus 0. thence S. 23° E. 1079 ft.  
to station 3 plus 0. thence S. 23° E. 1079 ft.  
to station 4 plus 0. thence S. 23° E. 1079 ft.  
to station 5 plus 0. thence S. 23° E. 1079 ft.  
to station 6 plus 0. thence S. 23° E. 1079 ft.  
to station 7 plus 0. thence S. 23° E. 1079 ft.  
to station 8 plus 0. thence S. 23° E. 1079 ft.  
to station 9 plus 0. thence S. 23° E. 1079 ft.  
to station 10 plus 0. thence S. 23° E. 1079 ft.  
to station 11 plus 0. thence S. 23° E. 1079 ft.  
to station 12 plus 0. thence S. 23° E. 1079 ft.  
to station 13 plus 0. thence S. 23° E. 1079 ft.  
to station 14 plus 0. thence S. 23° E. 1079 ft.  
to station 15 plus 0. thence S. 23° E. 1079 ft.  
to station 16 plus 0. thence S. 23° E. 1079 ft.  
to station 17 plus 0. thence S. 23° E. 1079 ft.  
to station 18 plus 0. thence S. 23° E. 1079 ft.  
to station 19 plus 0. thence S. 23° E. 1079 ft.  
to station 20 plus 0. thence S. 23° E. 1079 ft.  
to station 21 plus 0. thence S. 23° E. 1079 ft.  
to station 22 plus 0. thence S. 23° E. 1079 ft.  
to station 23 plus 0. thence S. 23° E. 1079 ft.  
to station 24 plus 0. thence S. 23° E. 1079 ft.  
to station 25 plus 0. thence S. 23° E. 1079 ft.  
to station 26 plus 0. thence S. 23° E. 1079 ft.  
to station 27 plus 0. thence S. 23° E. 1079 ft.  
to station 28 plus 0. thence S. 23° E. 1079 ft.  
to station 29 plus 0. thence S. 23° E. 1079 ft.  
to station 30 plus 0. thence S. 23° E. 1079 ft.  
to station 31 plus 0. thence S. 23° E. 1079 ft.  
to station 32 plus 0. thence S. 23° E. 1079 ft.  
to station 33 plus 0. thence S. 23° E. 1079 ft.  
to station 34 plus 0. thence S. 23° E. 1079 ft.  
to station 35 plus 0. thence S. 23° E. 1079 ft.  
to station 36 plus 0. thence S. 23° E. 1079 ft.  
to station 37 plus 0. thence S. 23° E. 1079 ft.  
to station 38 plus 0. thence S. 23° E. 1079 ft.  
to station 39 plus 0. thence S. 23° E. 1079 ft.  
to station 40 plus 0. thence S. 23° E. 1079 ft.  
to station 41 plus 0. thence S. 23° E. 1079 ft.  
to station 42 plus 0. thence S. 23° E. 1079 ft.  
to station 43 plus 0. thence S. 23° E. 1079 ft.  
to station 44 plus 0. thence S. 23° E. 1079 ft.  
to station 45 plus 0. thence S. 23° E. 1079 ft.  
to station 46 plus 0. thence S. 23° E. 1079 ft.  
to station 47 plus 0. thence S. 23° E. 1079 ft.  
to station 48 plus 0. thence S. 23° E. 1079 ft.  
to station 49 plus 0. thence S. 23° E. 1079 ft.  
to station 50 plus 0. thence S. 23° E. 1079 ft.  
to station 51 plus 0. thence S. 23° E. 1079 ft.  
to station 52 plus 0. thence S. 23° E. 1079 ft.  
to station 53 plus 0. thence S. 23° E. 1079 ft.  
to station 54 plus 0. thence S. 23° E. 1079 ft.  
to station 55 plus 0. thence S. 23° E. 1079 ft.  
to station 56 plus 0. thence S. 23° E. 1079 ft.  
to station 57 plus 0. thence S. 23° E. 1079 ft.  
to station 58 plus 0. thence S. 23° E. 1079 ft.  
to station 59 plus 0. thence S. 23° E. 1079 ft.  
to station 60 plus 0. thence S. 23° E. 1079 ft.  
to station 61 plus 0. thence S. 23° E. 1079 ft.  
to station 62 plus 0. thence S. 23° E. 1079 ft.  
to station 63 plus 0. thence S. 23° E. 1079 ft.  
to station 64 plus 0. thence S. 23° E. 1079 ft.  
to station 65 plus 0. thence S. 23° E. 1079 ft.  
to station 66 plus 0. thence S. 23° E. 1079 ft.  
to station 67 plus 0. thence S. 23° E. 1079 ft.  
to station 68 plus 0. thence S. 23° E. 1079 ft.  
to station 69 plus 0. thence S. 23° E. 1079 ft.  
to station 70 plus 0. thence S. 23° E. 1079 ft.  
to station 71 plus 0. thence S. 23° E. 1079 ft.  
to station 72 plus 0. thence S. 23° E. 1079 ft.  
to station 73 plus 0. thence S. 23° E. 1079 ft.  
to station 74 plus 0. thence S. 23° E. 1079 ft.  
to station 75 plus 0. thence S. 23° E. 1079 ft.  
to station 76 plus 0. thence S. 23° E. 1079 ft.  
to station 77 plus 0. thence S. 23° E. 1079 ft.  
to station 78 plus 0. thence S. 23° E. 1079 ft.  
to station 79 plus 0. thence S. 23° E. 1079 ft.  
to station 80 plus 0. thence S. 23° E. 1079 ft.  
to station 81 plus 0. thence S. 23° E. 1079 ft.  
to station 82 plus 0. thence S. 23° E. 1079 ft.  
to station 83 plus 0. thence S. 23° E. 1079 ft.  
to station 84 plus 0. thence S. 23° E. 1079 ft.  
to station 85 plus 0. thence S. 23° E. 1079 ft.  
to station 86 plus 0. thence S. 23° E. 1079 ft.  
to station 87 plus 0. thence S. 23° E. 1079 ft.  
to station 88 plus 0. thence S. 23° E. 1079 ft.  
to station 89 plus 0. thence S. 23° E. 1079 ft.  
to station 90 plus 0. thence S. 23° E. 1079 ft.  
to station 91 plus 0. thence S. 23° E. 1079 ft.  
to station 92 plus 0. thence S. 23° E. 1079 ft.  
to station 93 plus 0. thence S. 23° E. 1079 ft.  
to station 94 plus 0. thence S. 23° E. 1079 ft.  
to station 95 plus 0. thence S. 23° E. 1079 ft.  
to station 96 plus 0. thence S. 23° E. 1079 ft.  
to station 97 plus 0. thence S. 23° E. 1079 ft.  
to station 98 plus 0. thence S. 23° E. 1079 ft.  
to station 99 plus 0. thence S. 23° E. 1079 ft.  
to station 100 plus 0. thence S. 23° E. 1079 ft.  
to station 101 plus 0. thence S. 23° E. 1079 ft.  
to station 102 plus 0. thence S. 23° E. 1079 ft.  
to station 103 plus 0. thence S. 23° E. 1079 ft.  
to station 104 plus 0. thence S. 23° E. 1079 ft.  
to station 105 plus 0. thence S. 23° E. 1079 ft.  
to station 106 plus 0. thence S. 23° E. 1079 ft.  
to station 107 plus 0. thence S. 23° E. 1079 ft.  
to station 108 plus 0. thence S. 23° E. 1079 ft.  
to station 109 plus 0. thence S. 23° E. 1079 ft.  
to station 110 plus 0. thence S. 23° E. 1079 ft.  
to station 111 plus 0. thence S. 23° E. 1079 ft.  
to station 112 plus 0. thence S. 23° E. 1079 ft.  
to station 113 plus 0. thence S. 23° E. 1079 ft.  
to station 114 plus 0. thence S. 23° E. 1079 ft.  
to station 115 plus 0. thence S. 23° E. 1079 ft.  
to station 116 plus 0. thence S. 23° E. 1079 ft.  
to station 117 plus 0. thence S. 23° E. 1079 ft.  
to station 118 plus 0. thence S. 23° E. 1079 ft.  
to station 119 plus 0. thence S. 23° E. 1079 ft.  
to station 120 plus 0. thence S. 23° E. 1079 ft.  
to station 121 plus 0. thence S. 23° E. 1079 ft.  
to station 122 plus 0. thence S. 23° E. 1079 ft.  
to station 123 plus 0. thence S. 23° E. 1079 ft.  
to station 124 plus 0. thence S. 23° E. 1079 ft.  
to station 125 plus 0. thence S. 23° E. 1079 ft.  
to station 126 plus 0. thence S. 23° E. 1079 ft.  
to station 127 plus 0. thence S. 23° E. 1079 ft.  
to station 128 plus 0. thence S. 23° E. 1079 ft.  
to station 129 plus 0. thence S. 23° E. 1079 ft.  
to station 130 plus 0. thence S. 23° E. 1079 ft.  
to station 131 plus 0. thence S. 23° E. 1079 ft.  
to station 132 plus 0. thence S. 23° E. 1079 ft.  
to station 133 plus 0. thence S. 23° E. 1079 ft.  
to station 134 plus 0. thence S. 23° E. 1079 ft.  
to station 135 plus 0. thence S. 23° E. 1079 ft.  
to station 136 plus 0. thence S. 23° E. 1079 ft.  
to station 137 plus 0. thence S. 23° E. 1079 ft.  
to station 138 plus 0. thence S. 23° E. 1079 ft.  
to station 139 plus 0. thence S. 23° E. 1079 ft.  
to station 140 plus 0. thence S. 23° E. 1079 ft.  
to station 141 plus 0. thence S. 23° E. 1079 ft.  
to station 142 plus 0. thence S. 23° E. 1079 ft.  
to station 143 plus 0. thence S. 23° E. 1079 ft.  
to station 144 plus 0. thence S. 23° E. 1079 ft.  
to station 145 plus 0. thence S. 23° E. 1079 ft.  
to station 146 plus 0. thence S. 23° E. 1079 ft.  
to station 147 plus 0. thence S. 23° E. 1079 ft.  
to station 148 plus 0. thence S. 23° E. 1079 ft.  
to station 149 plus 0. thence S. 23° E. 1079 ft.  
to station 150 plus 0. thence S. 23° E. 1079 ft.  
to station 151 plus 0. thence S. 23° E. 1079 ft.  
to station 152 plus 0. thence S. 23° E. 1079 ft.  
to station 153 plus 0. thence S. 23° E. 1079 ft.  
to station 154 plus 0. thence S. 23° E. 1079 ft.  
to station 155 plus 0. thence S. 23° E. 1079 ft.  
to station 156 plus 0. thence S. 23° E. 1079 ft.  
to station 157 plus 0. thence S. 23° E. 1079 ft.  
to station 158 plus 0. thence S. 23° E. 1079 ft.  
to station 159 plus 0. thence S. 23° E. 1079 ft.  
to station 160 plus 0. thence S. 23° E. 1079 ft.  
to station 161 plus 0. thence S. 23° E. 1079 ft.  
to station 162 plus 0. thence S. 23° E. 1079 ft.  
to station 163 plus 0. thence S. 23° E. 1079 ft.  
to station 164 plus 0. thence S. 23° E. 1079 ft.  
to station 165 plus 0. thence S. 23° E. 1079 ft.  
to station 166 plus 0. thence S. 23° E. 1079 ft.  
to station 167 plus 0. thence S. 23° E. 1079 ft.  
to station 168 plus 0. thence S. 23° E. 1079 ft.  
to station 169 plus 0. thence S. 23° E. 1079 ft.  
to station 170 plus 0. thence S. 23° E. 1079 ft.  
to station 171 plus 0. thence S. 23° E. 1079 ft.  
to station 172 plus 0. thence S. 23° E. 1079 ft.  
to station 173 plus 0. thence S. 23° E. 1079 ft.  
to station 174 plus 0. thence S. 23° E. 1079 ft.  
to station 175 plus 0. thence S. 23° E. 1079 ft.  
to station 176 plus 0. thence S. 23° E. 1079 ft.  
to station 177 plus 0. thence S. 23° E. 1079 ft.  
to station 178 plus 0. thence S. 23° E. 1079 ft.  
to station 179 plus 0. thence S. 23° E. 1079 ft.  
to station 180 plus 0. thence S. 23° E. 1079 ft.  
to station 181 plus 0. thence S. 23° E. 1079 ft.  
to station 182 plus 0. thence S. 23° E. 1079 ft.  
to station 183 plus 0. thence S. 23° E. 1079 ft.  
to station 184 plus 0. thence S. 23° E. 1079 ft.  
to station 185 plus 0. thence S. 23° E. 1079 ft.  
to station 186 plus 0. thence S. 23° E. 1079 ft.  
to station 187 plus 0. thence S. 23° E. 1079 ft.  
to station 188 plus 0. thence S. 23° E. 1079 ft.  
to station 189 plus 0. thence S. 23° E. 1079 ft.  
to station 190 plus 0. thence S. 23° E. 1079 ft.  
to station 191 plus 0. thence S. 23° E. 1079 ft.  
to station 192 plus 0. thence S. 23° E. 1079 ft.  
to station 193 plus 0. thence S. 23° E. 1079 ft.  
to station 194 plus 0. thence S. 23° E. 1079 ft.  
to station 195 plus 0. thence S. 23° E. 1079 ft.  
to station 196 plus 0. thence S. 23° E. 1079 ft.  
to station 197 plus 0. thence S. 23° E. 1079 ft.  
to station 198 plus 0. thence S. 23° E. 1079 ft.  
to station 199 plus 0. thence S. 23° E. 1079 ft.  
to station 200 plus 0. thence S. 23° E. 1079 ft.  
to station 201 plus 0. thence S. 23° E. 1079 ft.  
to station 202 plus 0. thence S. 23° E. 1079 ft.  
to station 203 plus 0. thence S. 23° E. 1079 ft.  
to station 204 plus 0. thence S. 23° E. 1079 ft.  
to station 205 plus 0. thence S. 23° E. 1079 ft.  
to station 206 plus 0. thence S. 23° E. 1079 ft.  
to station 207 plus 0. thence S. 23° E. 1079 ft.  
to station 208 plus 0. thence S. 23° E. 1079 ft.  
to station 209 plus 0. thence S. 23° E. 1079 ft.  
to station 210 plus 0. thence S. 23° E. 1079 ft.  
to station 211 plus 0. thence S. 23° E. 1079 ft.  
to station 212 plus 0. thence S. 23° E. 1079 ft.  
to station 213 plus 0. thence S. 23° E. 1079 ft.  
to station 214 plus 0. thence S. 23° E. 1079 ft.  
to station 215 plus 0. thence S. 23° E. 1079 ft.  
to station 216 plus 0. thence S. 23° E. 1079 ft.  
to station 217 plus 0. thence S. 23° E. 1079 ft.  
to station 218 plus 0. thence S. 23° E. 1079 ft.  
to station 219 plus 0. thence S. 23° E. 1079 ft.  
to station 220 plus 0. thence S. 23° E. 1079 ft.  
to station 221 plus 0. thence S. 23° E. 1079 ft.  
to station 222 plus 0. thence S. 23° E. 1079 ft.  
to station 223 plus 0. thence S. 23° E. 1079 ft.  
to station 224 plus 0. thence S. 23° E. 1079 ft.  
to station 225 plus 0. thence S. 23° E. 1079 ft.  
to station 226 plus 0. thence S. 23° E. 1079 ft.  
to station 227 plus 0. thence S. 23° E. 1079 ft.  
to station 228 plus 0. thence S. 23° E. 1079 ft.  
to station 229 plus 0. thence S. 23° E. 1079 ft.  
to station 230 plus 0. thence S. 23° E. 1079 ft.  
to station 231 plus 0. thence S. 23° E. 1079 ft.  
to station 232 plus 0. thence S. 23° E. 1079 ft.  
to station 233 plus 0. thence S. 23° E. 1079 ft.  
to station 234 plus 0. thence S. 23° E. 1079 ft.  
to station 235 plus 0. thence S. 23° E. 1079 ft.  
to station 236 plus 0. thence S. 23° E. 1079 ft.  
to station 237 plus 0. thence S. 23° E. 1079 ft.  
to station 238 plus 0. thence S. 23° E. 1079 ft.  
to station 239 plus 0. thence S. 23° E. 1079 ft.  
to station 240 plus 0. thence S. 23° E. 1079 ft.  
to station 241 plus 0. thence S. 23° E. 1079 ft.  
to station 242 plus 0. thence S. 23° E. 1079 ft.  
to station 243 plus 0. thence S. 23° E. 1079 ft.  
to station 244 plus 0. thence S. 23° E. 1079 ft.  
to station 245 plus 0. thence S. 23° E. 1079 ft.  
to station 246 plus 0. thence S. 23° E. 1079 ft.  
to station 247 plus 0. thence S. 23° E. 1079 ft.  
to station 248 plus 0. thence S. 23° E. 1079 ft.  
to station 249 plus 0. thence S. 23° E. 1079 ft.  
to station 250 plus 0. thence S. 23° E. 1079 ft.  
to station 251 plus 0. thence S. 23° E. 10