



One of a group of "All-Crete" cottages at Log Cabin Beach, Commerce Lake, Oakland County, constructed for Seely & Linton, Pontiac Commercial and Savings Bank Building.

Ready for the Roof In Five Days

IT TAKES only five days to erect the walls and lay the floor joists of a two-story home according to the Strom All-Crete method of building with poured concrete.

Here is a typical building schedule:—

- 1st day—Pouring basement walls.
- 2nd day—Laying first-floor joists.
- 3rd day—Pouring walls of first story.
- 4th day—Laying second-floor joists.
- 5th day—Pouring walls of second story.

Investigate this modern method of building construction which effects a substantial saving in building costs, as compared with solid brick or veneer construction.

The Strom System is equally well adapted to factory, store, and garage construction. Send coupon for complete information.

NAME _____

ADDRESS _____

STROM SYSTEMS

158 SO. JOHNSON AVE., Pontiac

PHONE 2043-W

Detroit Office: 820 Penobscot Bldg.

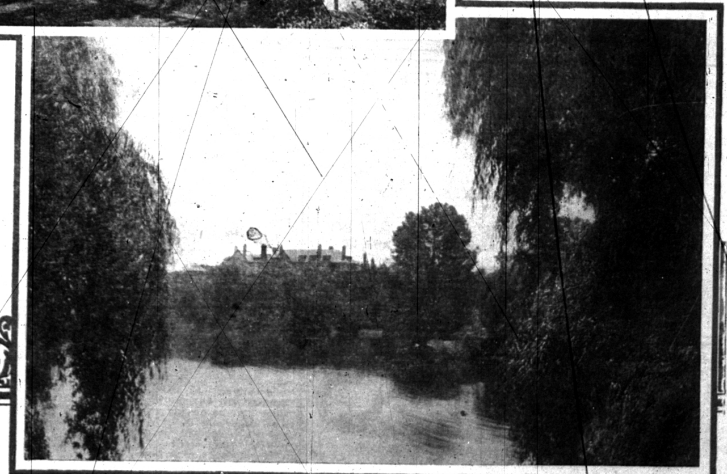
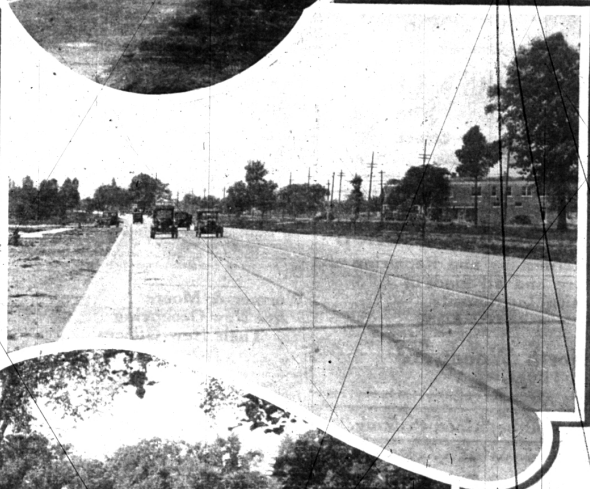
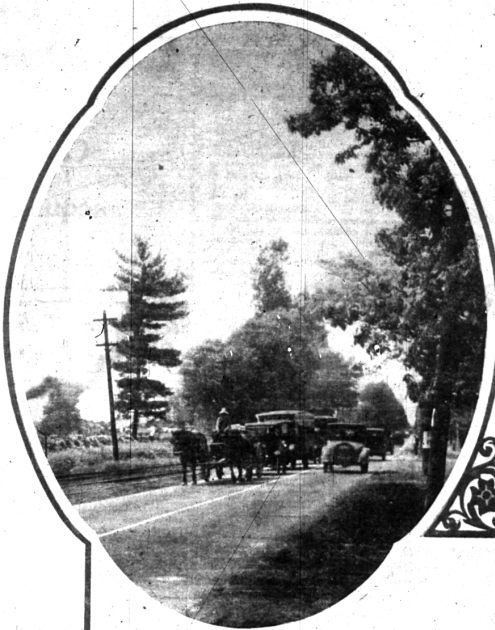
Familiar Scenes Around Birmingham

Through the courtesy of the Johnson Bradway Company we have secured several attractive pictures that are of interest to this section. The top photograph brings back to mind the days of Woodward avenue that are even now becoming a memory. The picture was taken on the roadway some months ago between Birmingham and Detroit, and brings a sigh of relief from the drivers who made the trip regularly and experienced just such a situation daily.

Below is a more familiar sight showing a strip of one side of the new pavement much as it looks today, just outside of Royal Oak and as it will look between Detroit and Pontiac about next September.

Next is one of the attractive homes in Bloomfield, one of the many such reasons that make this such a desirable community and brought on the need of a wider Woodward avenue.

In the lower photograph one sees the familiar towers of "Cranbrook," the George G. Booth home in Bloomfield Hills, taken from one of the most beautiful spots on the estate.



VILLAGE TAXES DUE

JULY 1, 1925

NOTICE is hereby given that Village Taxes for the fiscal year 1925 are due and payable at the office of the Village Treasurer July 1, 1925.

Payable without penalty up to and including July 31, 1925.

One per cent penalty from August 1 to September 1, 1925, inclusive. Four per cent penalty from September 1 to October 31, 1925, inclusive. No taxes accepted by Village Treasurer after October 31, 1925, as the tax roll will be in the hands of the County Treasurer at Pontiac for collection. All taxes unpaid after October 31, 1925, will bear the four per cent penalty plus three-quarters of one per cent for each additional month or fraction thereof.

Charles E. Plumstead

Treasurer, Village of Birmingham.

Your Suit

For July and August should be
Ordered in June

ORDER NOW AND KEEP COOL THEN

Ask for an International Tropical Worst

A Cool Suit Means Comfort To You

CHARLES PECK, Tailor
MEN'S FURNISHINGS

CLEANING PRESSING

103 - 105 W. Maple Ave. Phone 230