



First Quiets—Then Ends A Cough

That terrible "hack," "cough" that almost drives you frantic and strains your whole body can be quieted in a jiffy by taking a few drops of Kemp's Balsam for the throat. Kemp's Balsam is the only medicine that cures the cough, soothes the throat, and takes away that oppressive, choking, coughing, that starts in the throat, and ends in the chest. Only 25 cents at all stores.

For that Cough
KEMP'S BALSAM

Use Of Ethyl Gas Is Not Dangerous

One of the big problems confronting engineers in building motors of greater economy is that of taking out the "knock" from the operation of the engine. Recent investigations of this knock have demonstrated that it can be eliminated by adding small quantities of certain compounds to gasoline. This makes it possible to use engines of higher compression thereby increasing the mileage per gallon of gasoline used. Savings that

will come to motorists from the general adoption of higher compression motors will be enormous. Ethyl Gasoline, the most widely used anti-knock fuel, is composed of commercial motor gasoline to which has been added Ethyl fluid. Ethyl fluid is chiefly concentrated Tetra-ethyl lead. Neither Ethyl fluid nor Tetra-ethyl lead are sold directly to the public as such, but only when mixed with gasoline. The proportion of Ethyl fluid in Ethyl gasoline is only 1 part to 1,000 parts of gasoline, a proportion approximating only one-tenth of one percent of the compound. The Bureau of Mines has been

studying for some years the properties of exhaust gases from automobiles and their danger to public health. When Ethyl gasoline was introduced the Bureau at once became interested in knowing whether it would increase the existing hazard from automobile exhaust gases. Tests were conducted over a period of eight months and no indication was shown of any increase in the hazard from automobiles using Ethyl gasoline, was discovered. Motorists can use Ethyl gasoline, therefore, with entire confidence.

Nash Co. Expanding To Meet Big Demand

Detroit, Mich., Feb. 12.—The Ford Motor Company enters trans-Atlantic shipping, operating its own fleet for carrying manufactured automobile parts to the company's foreign plants, Edsel B. Ford, president announced.

At the same time, Mr. Ford announced that the company has just purchased the Stear East Line from the Emergency Fleet Corp., as the first large unit in the proposed fleet to be put into foreign service.

"We have decided to enlarge our fleet to include large ocean going vessels which will be used to ship our European plants and will proceed with those plans at once," Mr. Ford said.

"Our decision in this matter has been prompted by the successful operation of our own fleet of automobiles during the last few months."

"These ships have been engaged in carrying automobiles and motor parts to our assembly plants along the southern coast of the United States and to South America, taking on other commercial cargoes on return trips north."

"The East Indian, which the company has chartered from the Emergency Fleet Corp., is in the yards of the Ship Building Company at Camden, Pa., where it will be reconstructed. It has twin screws, driven by reciprocating steam engines, but these engines will be replaced by Diesel engines of the most modern type," Mr. Ford said.

The vessel is to be entirely refitted, and plans already made call for having it ready for service within 6 months. The East Indian was built in 1918. It has three decks, is 485 feet in length overall, has a 58-foot beam, a capacity of 12,500 tons, a 28,000-horsepower engine, and a draft and a speed of 12 to 13 knots an hour. It makes the fifth unit in the present Ford fleet.

Ford To Operate Own Overseas Shipping

Factory extensions and additional plant equipment will increase the production capacity of the Nash Motors Co. by 40 per cent by the opening of the spring season over the greatest production ever attained previously. Demand for the Nash line of automobiles and special six series cars kept the plants in Kenosha and Milwaukee busy throughout the year.

"It always has been our policy to expand our business on a sound basis," says C. W. Nash, president of the company, in a letter to Mr. Bell "but the models brought out by us last August were so well received by the public that we were compelled to meet the full demand. The thing to do then was to increase our production capacity by building extensions and through the installation of additional machinery equipment. This will make it possible for us to have in the hands of our dealers in the early spring, car quantities that will more nearly meet the demand."

The expansion of plants and equipment is in line with Nash policy to absolutely govern the quantity by building its product almost wholly within the walls of its own plants, and provision made for the heavy increase in production in this manner instead of going outside the factory to accomplish the increase.

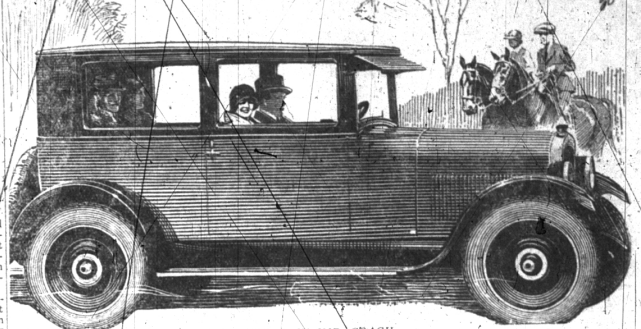
Orders for the new equipment were placed some weeks ago and work of installation will begin as soon as the buildings have been completed. Active work on the new buildings also is under way, the extensions affecting both the Kenosha and Milwaukee plants.

Church and Sunday School

First Church of Christ, Scientist. Services at 10:30 a. m. Sunday school, for children up to 5 years old, 10:30; from 5 to 20 years old, 11:45. Wednesday evenings, 8 o'clock. Free reading room open daily except Sunday and holidays from 11:30 a. m. to 4:30 p. m. Tuesday evenings 7:00 to 7:50. Thursday evening 7:00 to 9:00. All are invited.

English Lutheran Church "Peter, the Boaster, Cured" will be the topic of the Pastor's first Lenten sermon on Wednesday evening at 8:00 p. m. "Jesus of Nazareth Will Pass by" Come and behold Him in His Savior beauty, and you will wear the robes of spiritual gladness. Friends and visitors are welcome at all services. On Sunday morning at 10:30 "Christ's Last Journey to Jerusalem" will be discussed. Sunday school at 9:30. The Sunday school teachers Training Class meets on next Monday evening at 8:00 at the parlorage. Rev. A. Schuessler, 505 Henrietta, phone 1277.

Methodist Church 10:00 a. m., class meeting, 10:30 morning worship in theme "Adventurers" 12 M. Sabbath school, 6:30 p. m. Epworth League, 7:30 evening services. Special music, theme "The Man Who Lost His Dream". Announcements for the week—



NEW OAKLAND COACH

Monday evening an entertainment given by Anne Campbell of the Detroit News. This will be a pre-Grand war benefit. There will be music by the orchestra and male quartet. Thursday afternoon, the Womans Foreign Missionary Society will hold their meeting at the home of Mrs. William Barry on Fernside avenue. Meeting promptly at 2:30 o'clock. Sunday, March 1, opens the musical season in order that he might accept the pastoral call from the Easton Church of Detroit. His dismission will take effect the end of the month. This means that next Sunday, February 22, will be Mr. McKnight's last Sunday as pastor in this church. At the close of the day he will by the direction of the Presbytery declare the pulpit vacant. There will be the regular services during the day, with infant baptism, and possibly reception of new members, at the morning service. A very cordial welcome for all.

Saint James' Episcopal. Sunday, February 22, Quinquagesima, 8:00 a. m.; Holy communion; 9:30 a. m. Junior School; 11:00 a. m. morning prayer; 8:00 p. m. Washington's Birthday, Masonic Service, Tuesday, February 24, St. Matthias' Day, 9:30 a. m. Holy communion; Wednesday, February 25, Ash Wednesday, 7:00 a. m. Holy communion; 10:00 a. m. Pentecost; 8:00 p. m. Litany and addresses. Thursday, February 26, 3:00 p. m. Rector's class; 8:00 p. m. evening prayer. Friday, February 27, 8:30 a. m. Holy communion.

First Baptist Church. Church of Bates and Willets streets. Pastor, T. Edwards. The pastor will speak on "The Service of the Spiritual Man." The Bible school meets at 11:15 o'clock. There are excellent classes for all. People of Baptist persuasion are urged to send their children for religious instruction. In the evening the service of Praise at 7:30 o'clock. The pastor will speak on "Abraham, or the Example of Living Faith." You are cordially invited.

Birmingham Gospel Brotherhood. Church of Bates and Merrill streets. There will be a Missionary Meeting Friday evening, February 20, at 7:30 p. m. Rev. Christie, who has just returned from the Tibetan border work in China, will be the speaker. Everyone is cordially invited. Sunday morning at 10:30 the last of the series of sermons on "The Three

Southfield United Presbyterian Church. Rev. W. T. Armstrong, minister, preaching services 11 a. m. On Sabbath, February 22, Rev. J. H. White, D. D., will preach on "Stewardship." Sabbath school 12 o'clock. Mr. Chas. Paul, Supt. Young peoples meeting and Bible study 8:00 p. m. At the home of J. E. McClelland. The men of the church will give their annual supper on Saturday, February 21. Dr. J. H. White of Pittsburgh, Pa., will be the speaker of the evening. His subject will be "Staking Out Our Kingdom." Everyone welcome at all these meetings.

Southfield United Presbyterian Church. Rev. W. T. Armstrong, minister, preaching services 11 a. m. On Sabbath, February 22, Rev. J. H. White, D. D., will preach on "Stewardship." Sabbath school 12 o'clock. Mr. Chas. Paul, Supt. Young peoples meeting and Bible study 8:00 p. m. At the home of J. E. McClelland. The men of the church will give their annual supper on Saturday, February 21. Dr. J. H. White of Pittsburgh, Pa., will be the speaker of the evening. His subject will be "Staking Out Our Kingdom." Everyone welcome at all these meetings.

VILLAGE ELECTION BOARD IS APPOINTED MONDAY

The election board to preside in the Town Hall when the village holds its annual election Monday, March 9, was appointed Monday evening at the commission meeting. The board consists of: Florence Walker, Claire Stewart, and George Mitchell are the "victims." William Brown and William Harbison are gatekeepers.

NEW TAXICAB STAND

D. H. Reynolds, of High street, has given a permit to operate a local "taxi" stand Monday night by village officials. Mr. Reynolds will be allowed to park his car in front of the D.N.W. waiting room on South Woodward avenue.

We Do Typesetting, Too.

DODGE BROTHERS COACH

Dodge Brothers Coach measures up in every detail to the high standards of its builders. Low, graceful and sturdy, it looks and performs the part of a true aristocrat.

The interior is roomy, comfortable and inviting. The lacquer finish is exceedingly attractive in Dodge Brothers blue with body stripe of cartouche yellow.

The chassis is the same on which Dodge Brothers have concentrated all their experiences and resources for a decade. Comfortable riding qualities and dependable performance are therefore obvious attributes.

Evans-Jackson Motor Co.
119 SOUTH WOODWARD AVE.
PHONE 301
Birmingham, Mich.



Ford

Confidence in Ford Performance

The owner of a Ford is never in doubt as to what he can expect in service. He knows what his car will do and how sturdily it will do it.

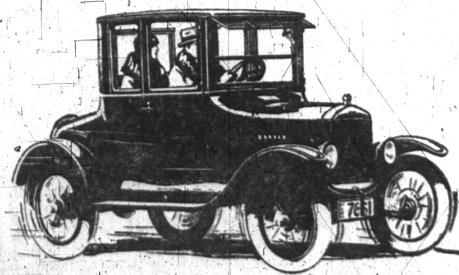
The Coupe \$520
Runabout \$260
Touring Car \$500
Tourer Sedan \$500
Fordor Sedan \$500
On open car demonstrate size and service
305 extra
All prices C. & O. Dealer

When bad weather and roads put other cars out of commission, the Ford car will stay on the job. It will carry through slush and snow, over frozen ruts, newly constructed roads—anywhere.

Yet Ford benefits can be yours for the lowest prices ever offered. This is made possible by the efficiency of Ford manufacture, the volume of output and practically limitless resources.

Ford Motor Company
Detroit

CONANT-OSBORNE Local Dealers

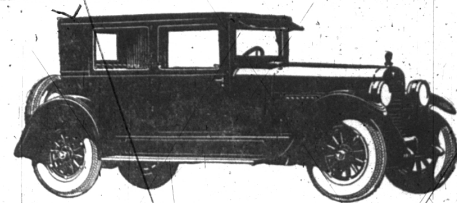


VISITORS ARE ALWAYS WELCOME AT ALL FORD PLANTS

DEPENDABLE Used Cars

- 2 Ford Coupes
- 2 Ford Sedans
- 3 Ford Tourings
- 1 Reo Sedan
- 1 Essex Coach
- 1 Buick Touring
- 1 Dodge Sedan
- 1 Studebaker Touring
- 1 Nash Touring
- 1 Dodge B Coupe

Evans-Jackson Motor Co.



For Ten Years the World's Greatest Buy

Hudson's position as the world's greatest value is not merely a new attainment. For ten years the Super-Six has stood alone in mechanical supremacy. Basic patents have kept others from copying its motor. The smoothness and long life it gives are exclusive. No motor has yet equaled the Super-Six in smoothness and long, economical car life.

HUDSON COACH \$1345
SEDAN 5 Passenger \$1795 7 Passenger \$1895
Fright and Tax Extra

The World's Largest Builders of Six Cylinder Closed Cars

BOUGHNER BROS. GARAGE

LOCAL DISTRIBUTORS

120 S. Woodward Ave.

Phone 70