

Gifts for All the Family

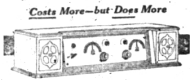
AS TIME HAS WROUGHT CHANGES IN OUR MODE OF LIVING AND IN SO MANY OF OUR CUSTOMS, so it has brought about decided changes in the character of gifts presented at Christmas.

Highly decorative, merchandise without practical value, which nobody bought except at Christmas, is no longer considered proper for Christmas Gifts. The spirit of Christmas is best expressed by the giving of practical remembrances that will be appreciated for a long time to come. Today the Christmas Gift ideal is one which is useful as well as beautiful, and the suggestions illustrated here all come within this classification. Every article shown not only has a practical purpose for every day in the year, but is unconditionally guaranteed to perform satisfactorily the task for which it is intended.



ZENITH
RADIO

Music from the Outside!
The thrill of distance—
The joy of clear and beautiful reception.



Costs More—but Does More



Grimes Empire Model

This is truly a wonderful receiver with all batteries self containers.



Baby Grand Model

WHY NOT BUY IN BIRMINGHAM?

We are in a position to give you anything in Our Line, at the same price, plus service and convenient terms!

In the Christmas Stocking

You can't get a Dayfan into a stocking, and yet you can get all the nations broadcasting into a Dayfan. The stations come in where Dayfan says they will—with single dial control—and the finest tone in Radio. They are going fast—better come in to-day.

Remember We still have 6 more Cone Loud Speakers \$18.00 List to be given FREE with the purchase of a complete Radio receiver.

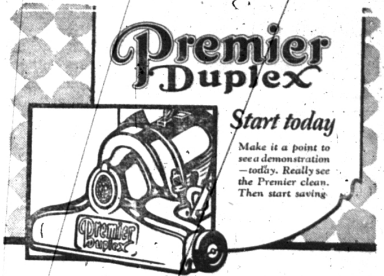
LEONARD ELECTRICAL CO.

134 W. Maple Ave.
Phone 223

Radio Department
In Basement



FOR a limited time, we are making this astounding offer to housewives. If you have an old, worn-out electric vacuum cleaner, we will make you a liberal allowance for it on the purchase price of the splendid new ball-bearing Premier Duplex. Furthermore, our easy-payment terms apply as well. A small down payment and then you pay the balance monthly.



JOE STROUP

Has promised a Chicken Dinner to the whole class if we have 100 members present next SUNDAY Morning.

WHO are we—
The Young Married People's Bible Class of the First Presbyterian Church.

WHO is the Teacher?
EARL G. POTTER—none better in the State.

IS IT Worth While?
Ask anyone who has attended at meeting.

WHEN?
Every SUNDAY morning at 10 o'clock.

A RECEPTION COMMITTEE WILL GREET YOU

You'll Come Back

Every advertisement in the Eccentric is a message from the merchant to you, folks. When you want to go to a theater, you read the theater advertisements to see if you'll like the show. You may read what local merchants have to offer in each issue of the Eccentric—in this way is the merchant's message brought to your very, friend's address.

New Big Ford Steel Plant In Operation

Rolling of steel has begun in the new big steel mill of the Ford Motor Company at the River Rouge Plant. The first billets drawn from the furnace were sent through the rollers and become rear axle shafts for Ford cars. These billets are approximately four inches square by fourteen inches in length when they emerge from the furnace at around 1900 degrees Fahrenheit. By the time rolling is completed they have been converted into steel rods slightly more than an inch in diameter and approximately 160 feet in length.

Except for a few officials who were present and the cutting of several short pieces from the first bar, to be retained as souvenirs, the opening of the mill was unmarked. It was significant, however, for it is a new step in Ford development destined to effect a big economy in production and brings the company closer to the realization of its plans to direct within its own organization every step of manufacturing progress from the raw material to the finished product.

In the parlance of the trade the mill is known as a merchant mill, a name passed down from the early days in steel trade, when the steel bar merchant was expected to handle bars of various sizes. And this is just what the new mill will do. It will produce bars of various sizes, all of steel made according to Ford specifications and intended for the manufacture of many separate parts to be used in the assembly of Ford cars.

The rolling mill, which has a capacity of handling between 15,000 and 20,000 tons of steel a month, is the first unit of the steel plant to start operations. It will be March or April next year before the plant begins to function as a whole, with open hearth furnaces from which ingots will be cast and the conversion of those into billets which go to the rolling mill.

In the meantime rolling mill operations will be carried on with billets purchased from outside sources, production will be increased monthly so that when the remainder of the plant begins to function the mill will be ready to care for all output of the furnaces.

The steel plant is housed in a building 450x1500 feet, with high walls of steel and glass which provide a maximum of daylight and ventilating facilities. Equipment is the latest in steel mill practice. The rolling mill, occupying one portion of this, is electrically operated and has what is known as six stands of eighteen-inch rollers and four stands of fourteen-inch rollers.

When the new industry gets into operation as a whole, with everything running from open hearth furnaces to rolling mill, it will present in reality a mammoth monument to Ford economy methods.

Always get your "Classified Ad" into The Eccentric office before each Wednesday night.

PARAGRAPHS CONCERNING MICHIGAN

(By ED. A. NOWACK)

Lansing, Dec. 4.—Ten years ago the first pavement was laid on Woodward avenue outside the city of Detroit. Today it is referred to as the world's greatest highway and it is considered the big road engineering feat of the year.

Secretary of State Deland says that the gasoline tax paid in 44 states in 1925 will total close to \$140,000,000, according to information he has received.

The average gasoline consumption for Michigan cars is 350 gallons per annum for pleasure autos and 1000 gallons for trucks.

Michigan has been given tenth place in the union in the matter of grading and surfacing of roads in 1924. Michigan surfaced 814 miles of the 25,000 miles surfaced throughout the nation.

An apartment house in which apartments will be rented only to couples who have babies under five years is under construction in Detroit. Walter O. Briggs is back of the plan.

Soon after Dec. 1 it is planned to open the largest and most modern gas plant in the world at River Rouge. This plant will produce about 15 million cubic feet of gas daily and will supply Detroit.

All state operations for last year cost Michigan \$9.53 per capita, according to figures by the U. S. Department of Commerce. Total revenue receipts for that period were \$14.67 per capita. The per capita tax levy was \$5.42.

Five and a half million motor wheels will be shipped from Lansing plants of the Motor Wheel Corporation according to Harry Harper, president. This concern is said to be the world's largest producer of motor wheels. It was organized in 1920 when three consolidations were effected.

Shortage of water in the Dead River, Marquette county, has forced that city to buy two expensive Diesel engines for auxiliary power plant operation.

Production of motor cars for 1925 and profits therefrom, are expected to exceed the former high level mark of 1923.

Coincident with the merging of some of the larger baking concerns in the country Michigan plants are effected. The combination merger will take in Michigan bakeries, dairies, flour mills and similar industries as well as sugar refineries.

Benton Harbor has been selected by the government as the location for a new market for gathering together crop statistics. The office also will enforce federal shipping and grading laws.

Bullet proof glass and wire cages and such things are being installed in branch banks in Detroit by the American State Bank to foil bandits.

State geologists reports that in Arenac and Ogemaw counties there is undeveloped in the Rifle river 24, 800,000 K. W. H. at 75 percent efficiency and that the cost of developing this power is \$3,200,000.

\$2 Issues of The Eccentric for \$1.50.

NOTICE

TAXES FOR BLOOMFIELD TOWNSHIP
Will Be Received, Beginning

Tuesday, December 15, 1925

— AT THE —
BLOOMFIELD TOWNSHIP OFFICES

We expect to be moved to our new office in the First State Bank Building, by December 15th.

(Signed) **Martha Dewey Wilson**
Bloomfield Township Treasurer.

GIVE OUR CANDY

SHE'LL BE CHARMED

A Gift of Our Candy is a tribute to the good taste of the one who gives and a delight to the one who receives.

The choice assortments in the special Christmas boxes are just what she wants and just what you want to give.

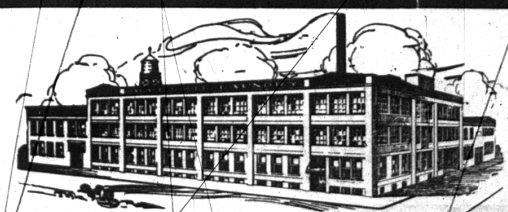
Try Our Noon-Day Lunches—You'll Be Pleased!

WE DELIVER



THE GRAY SWEET SHOP

Phone 850 128 S. WOODWARD



Your House Guest---
is deserving of the courtesy of the most immaculate linens it is possible to supply—an unquestioned mark of true hospitality. To be sure they are always as they should be, let us care for them.

Palace Model Laundry
Glendale 5680 26 Convenient Branches