

AUTOMOBILES

1,400,000 Miles Run By Two Packard Cars

San Diego, Calif., August 22.—Two motor cars in California have run up a total of more than 1,400,000 miles. These records are more than 700,000 miles each and each has been running eight years. They are still operating in daily service and their owners say they will be driven for years more before they are retired.

It was in May of this year that each car turned its 700,000 miles, a

distance the equivalent of 28 trips around the world. The two machines are standard touring cars made by the Packard Motor Car Co., each one of which was lengthened in wheel base to carry a large motor car stage body. They have been operating constantly night and day for eight years each in the fleet of 30 Packard cars operated by the Pickwick Stage System.

The stage coaches each carry 14 passengers besides the driver. They are fully loaded on nearly every trip placed in service they have carried 3,000 pounds more load than they were designed to carry. Despite

rough roads, mountain climbing and runs through the desert, neither car, overloaded a ton and a half as they always are, ever has broken down on the road.

The entire Pickwick fleet of Packard cars has run a total of more than 12,000,000 miles. The routes of the line extend from El Centro and San Diego to Portland, Ore.

Harmonic Balancer Feature Of Oakland

Today the average motorist thinks no more of driving his car 50 to 200

miles for a week-end trip than he did a decade ago of driving 25 miles. A trip through four or five states or even half across the continent in a motor car is considered an ordinary event for a two or three weeks' summer vacation.

This has brought about by the remarkable durability of cars today, together with smoother riding qualities which have been enhanced by all balloons tires, and the four wheel brakes which have made such trips, even at high speed, comparatively safe.

Yet one undesirable feature of motor car performance remained in taking such long trips—engine vibration. At the high speeds necessary on long runs, ranging from 25 to 45 miles an hour, the vibration of the average motor is particularly noticeable.

It was to eliminate this objectionable feature that engineers of the Oakland Motor Car Company and the General Motors Research Corporation developed the Harmonic Balancer which positively eliminates all torsional engine vibration.

This exclusive feature of the new Oakland Six has been acclaimed by experts as the greatest mechanical achievement of automotive engineering that has been introduced this year, comparable to the introduction of the two other great developments in motor car construction, the four wheel brakes and the balloon tires.

Though the new Oakland Six was introduced only slightly more than a month ago, thousands of letters have been received by Oakland dealers throughout the country from owners who attest to their joy of touring in this practically motor-vibrationless car.

The Harmonic Balancer is simple in both principle and design; is non-wearing and requires no adjustment. It consists of a light steel bar, pivoted to the shaft at its center and tensioned by stiff springs at both ends. The weight of the bar and the stiffness of the springs are so selected that the Harmonic Balancer has a natural frequency of vibration practically the same as the crankshaft itself. When there is the slightest movement of the shaft, the Harmonic Balancer picks it up and vibrates in the opposite direction, thus neutralizing all torsional vibration.

The principle of its operation might be stated simply by saying that the simplest way to stop any object that is moving is to push it in the opposite direction with a force equal to the force of the moving object. This, in essence, is what the Harmonic Balancer does.

DODGE BROTHERS COMMERCIAL CAR

So trim and businesslike in appearance that frequently it pays a substantial part of its own way in advertising value alone.

Evans-Jackson Motor Co.
119 SOUTH WOODWARD AVE.
PHONE 301 Birmingham, Mich.

USED CAR DIRECTORY

1923 Big Six Studebaker Sedan.
1924 Maxwell Club Sedan.
1924 Dodge Bros. Special B Sedan.
1922 Ford Coupe.
1923 Ford Touring—winter top.

Other Cars in Good Condition and Representing Excellent Values.

EVANS - JACKSON
119 S. Woodward Ave.
Phone 301
Birmingham Mich.

REAL VALUES GUARANTEED BY OUR PLEDGE
Cadillac Victoria.
Gray Sedan.
Chrysler Sedan.
Packard Coupe.
Cole 8 Roadster.

WURSTER & STAPLETON
129 W. Maple Ave.
Phone 674
Birmingham Mich.

1925 Oakland Sport Roadster.
1925 Oakland Coach.
1925 Oakland Touring.
1924 Oakland Sedan.
1924 Oakland Touring.

All Cars Fully Guaranteed—Your Car Accepted As-Part Payment—G. M. A. C. Terms.

BLOOMFIELD AUTOMOBILE CO.
113 Brownell St. - Ph. 550
(Near East Maple Avenue)
Birmingham Mich.

1920 Hupp Touring.
1922 Mercer Coupe.
1922 Jewett Coupe.
1923 Chevrolet Touring.
1922 Nash Touring.
1921 Dort Touring.
1923 Gray Touring.

ALL USED, IN A1 CONDITION

BELL BROS. GARAGE
122 East Maple Ave.
Phone 709
Birmingham Mich.

1924 Gray Sedan.
1925 Ford Coupe.
1923 Ford Sedan.
1920 Ford Touring.
1924 Chevrolet 4-pass. Coupe.

BERGER SALES
505 North Woodward Ave.
Birmingham Mich.

4 door Ford Sedan (year 1923).
Ford Coupe (year 1921).
Overland 01 Touring (year 1923).
Hudson 7-passenger Sedan (year 1923).
Reo 4 passenger Coupe (year 1923).

EVERY CAR A REAL BUY

BOUGHNER BROS.
132 S. Woodward Ave.
Phone 70
Birmingham Mich.

Watch for New Listings Each Week

The World's Greatest Automobile Value!



for Economical Transportation

Now You Can Get

- a fully equipped quality touring car for \$525
 - a racy, streamline roadster for \$525
 - a fine coupe with balloon tires and disc wheels for \$675
 - a Fisher Body Coach seating five people comfortably for \$695
 - a handsome sedan beautifully upholstered and with full equipment and appointments for \$775
- All Prices f. o. b. Flint, Mich.

What you get for your money—that is what really counts—that is the definition of value.

In a Chevrolet you get the greatest amount of quality at low cost that it is possible to obtain in any car built.

Chevrolet offers you the most for your automobile dollar. It possesses 83 distinct quality features. It possesses construction typical of the highest priced cars—a powerful, economical motor—dry plate disc clutch—selective three speed transmission—sturdy rear axle with pressed steel, banjo type housing—semi-elliptic springs of chrome-

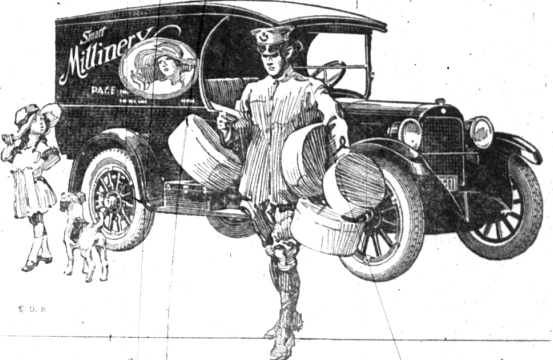
vanadium steel beautiful streamline bodies, with cream models by Fisher, finished in handsome colors of Duco whose luster and color last indefinitely. Compare these features with those of any car that you may wish to buy.

Chevrolet gives you power, durability, dependability, comfort, economy and fine appearance. And because this car provides such an extent of quality at low cost, Chevrolet has become the world's largest builder of quality cars with sliding gear transmission.

See these remarkable values today.

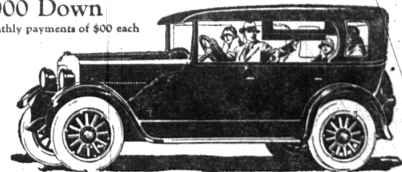
New Low Prices New Quality Features

BERGER SALES COMPANY
505 N. Woodward Avenue Phone 851
Open Nights and Sundays Birmingham, Mich.



STUDEBAKER Standard Six Duplex-Phaeton

\$000 Down
and 00 monthly payments of \$00 each



A Year Ahead of Its Time The One-Profít Duplex—more up-to-date than the newest "yearly models"

THE Duplex Body, introduced by Studebaker in September, 1924, is a revolutionary new-type open car—with advantages open cars have never possessed before.

Within its steel-framed upper structure are concealed roller side enclosures which the driver may lower in 30 seconds without leaving his seat—giving instant protection from rain, snow, cold or wind. With equal ease the enclosures roll up out of sight.

So obvious are the advantages of the Duplex that Studebaker has become the outstanding leader in the open-car field among cars selling above \$1000.

Triumph of Studebaker Engineering Other manufacturers will undoubtedly have to follow in Studebaker's footsteps. For any open car today without this unique advantage is obsolete.

But at the time this advertisement is written, Studebaker—and Studebaker alone—offers you this double convenience.

Another important engineering advantage pioneered by Studebaker is the use of genuine, full-size balloon tires, with steering mechanism, fenders and body lines especially designed for them.

Other manufacturers are gradually following Studebaker's lead—but remember, Studebaker developed this important feature 11 months ago.

On the Studebaker Standard Six Duplex-

Phaeton illustrated above, you'll find an automatic spark control, safety lighting control on the steering wheel, 8-day clock, gasoline gauge on the dash, improved one-piece windshield, special coincidental lock of ignition and steering gear, foot controlled cowl ventilator, completely machined crankshaft, oil drain valve which a girl can operate without soiling her hands, and waterproof ignition—all Studebaker features.

These are a few of the points which show that Studebaker cars are more up-to-date than the "new models" now being announced in dizzy succession.

And any automobile expert will tell you that new models of necessity are engineering experiments. Only after months of use in the hands of owners can all mechanical flaws be eliminated. Engineers are human—and it takes time to eliminate mistakes.

Thus, when you buy a Studebaker, you not only get a motor car that is completely up to date, but you also eliminate all guesswork and gamble. Your new car has been tested and proved satisfactory in the hands of thousands of owners.

Come in today—and see the One-Profít Duplex which has made all other open cars obsolete. It is called a "one-profit" car because all vital units are built entirely by Studebaker—thus eliminating the extra profits and overhead of outside parts makers which many other manufacturers must pay and include in the purchase price to you. This explains the fine quality and the low price.

WURSTER & STAPLETON
129 W. MAPLE AVE. PHONE 674
Service Station bank of Post-Office

QUALITY AT LOW COST