

AUTOMOBILES

SCREENS

Let us give you an estimate on Screening-in your porch; also window screens, screen doors and combination Storm and Screen Doors

Eco City Woodwork Shop

SASH - DOORS - FRAMES - CABINET WORK
Woodward and Humphrey Aves.
TELEPHONE Birmingham 620-J

Chevrolet Engineer Describes Ammeter

By O. E. Hunt, Chief Engineer Chevrolet Motor Company

The ammeter, the least understood dial on the instrument board of a motor car, is in many ways the most important. New automobile owners, however, understand the story the ammeter tells as the miles fly by. The ammeter is the guardian of the whole electrical system of the car, particularly during extreme of winter, cold and

summer heat, and is connected to every bit of electrical apparatus with the sole exception of the starting motor.

If you get acquainted with the ammeter, it will tell you as clearly as a glass whether or not the "kelly" system is functioning properly. It will tell you if one of the headlights is out; it will tell you if there is a short circuit in the line; it will warn you in a moment if the generator fails to charge the ammeter every 20 miles or so is a trouble sign of great importance.

When the meter is started, high everything is working properly, the little hand moves over to a certain spot on the charging scale and there invariably rests—varying in location with the speed of the car—until something goes wrong with the electrical system. If one of the headlights goes out the ammeter shows a slight increase in the charging rate; if the generator fails to function for any reason, the hand swings away over to the discharge side and the driver knows that the whole load is being carried by the battery.

The ammeter never shows the full flow of electricity from the generator, but it does indicate the amount of electricity that is flowing into or out of the battery, hence the importance of the tell-tale current indicator and its ability to tell what is going on all along the line.

The layman might ask why it is important to know the exact minute when the generator ceases to function as long as the car will keep on running with the current from the battery. One important reason is that if the generator fails due to broken leads in or outside, it should be given immediate attention or it will burn out and entail considerable expense for repairs. If he also knew that a fully charged battery would turn his engine over for 15 minutes in summer, but for only five minutes or less when the temperature was at zero, the ammeter tip might also induce him to crank the car by hand and thus conserve the energy of the battery.

The generator is the whole source of supply of electricity and it keeps the entire system in operation but it requires little, if any attention, from the driver. It is important to know that the electrical output of the generator may be varied on Chevrolet cars by what is known as third brush adjustment, for the car consumes more electricity in cold weather than it does in warm and the generator should be adjusted accordingly by one who is experienced in doing this kind of work.

It is easy to know when generator adjustment is required, for the battery will tell you all about it. Give your battery a hydrometer test every two weeks. If you find the battery fully charged and requiring only a little distilled water, everything is all right. If at the end of successive two week's periods you find the battery persistently out of water, it is an indication that the generator is supplying too much electricity and if allowed to continue will result in serious damage to the battery. On the other hand, you find the battery persistently undercharged the generator should be adjusted to supply more current.

It is important for the driver to follow instructions carefully when adjusting the gap on his spark plugs. A high voltage is required to make the spark jump the gap and the wider the gap the higher the voltage. However, if the gap is widened the voltage is automatically increased, and it goes high enough will cause a failure in the ignition coil and will require a new unit which is rather expensive.

Many drivers, and not a few mechanics, have found that an engine which will not run properly when idling, due to leaky valves or some other cause, will run fine if the spark gap is widened, but they are merely relieving the difficulty for a time at the expense of the electrical system, instead of finding the real cause of the trouble and correcting it at the source.

Dodge Brothers Car Dependable Product

"For ten years—dependable. These words express the successful attainment of an ideal conceived in the minds of the founders before the first car bearing Dodge Brothers name was placed in the hands of a purchaser late in 1914," says George A. Jackson, of the Evans-Jackson Motor Co., local dealer, in commenting on Dodge Brothers latest advertisement.

"The word 'dependable' when it appeared on the poster boards and in the magazines and newspapers several years ago, focused public attention on one basic characteristic to which, more than any other, is due the good name which Dodge Brothers Motor Car enjoys everywhere.

"Having decided to produce a car and manufactured to work together kept 'dependability' constantly in

mind while they were designing the units, selecting the materials, preparing the heat treatments and determining the machining and assembling processes and inspections. The four-cylinder, I-head type of engine was selected because it has always been known, over great periods of service, to be the most dependable and free from need of repairs or adjustments.

"That their judgment a decade ago was sound is evidenced clearly by the fact that over 75% of all passenger cars today are powered by four-cylinder engines and that last year Dodge Brothers sales showed an increase of over 25% against a loss of 11% by the automobile industry as a whole.

"Dependability of the chassis is the result of a well balanced design—of which Dodge Brothers Motor Car is an outstanding example. All units and component parts are designed and manufactured to work together in smooth coordination—none over-

developed at the expense of others. "The well known policy of constant development of a basic design as contrasted with the production of radically different annual models gives the buyer complete assurance of dependability. Every year since the first Dodge Brothers Motor Car was built it has been made better by refinement of detail. "When one million Dodge Brothers Motor Cars had been produced it was found that over 90% were still in active service. This fact affords ample evidence of generous public approval of the sound policy of building a car of enduring dependability."

Packard-Charlton Bldg. Co.
ROOM 4 LEVINSON BLDG.
Phone 630 - Birmingham, Mich.
Frank S. Packard Cecil F. Charlton

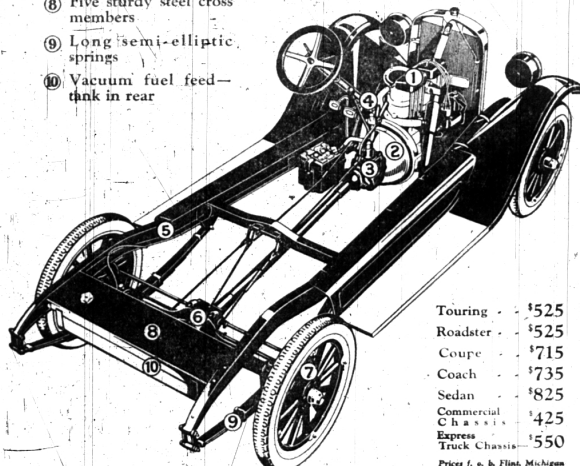
CHASSIS FEATURES

- 1 Powerful valve-in-head motor
- 2 Fully enclosed dry disc clutch
- 3 Selective 3-speed transmission
- 4 Semi-reversible steering gear
- 5 Deep channel steel frame
- 6 Semi-floating rear axle—banjo-type housing
- 7 Large 11" brakes—automatic equalizer
- 8 Five sturdy steel cross members
- 9 Long semi-elliptic springs
- 10 Vacuum fuel feed—tank in rear

STRENGTH

The Chevrolet chassis possesses strength and features of construction that you would expect to find only on high priced cars.

for Economical Transportation



Touring	\$525
Roadster	\$525
Coupe	\$715
Coach	\$735
Sedan	\$825
Commercial Chassis	\$425
Express Truck Chassis	\$550

Price f. o. b. Flint, Michigan

Belford Sales Co.

505-507 North Woodward Ave.

QUALITY AT LOW COST

GUARANTEED Value

Protecting Used Car Buyers
A Sound Policy Followed by Authorized Ford Dealers



A Used Ford Car bought from an Authorized Ford Dealer carries with it an assurance of good value and satisfactory economical performance.

It was traded in for another Ford, proof positive of the faithful service and inexpensive up-keep enjoyed by its former owner, and it has been thoroughly inspected by the Authorized Ford Dealer.

CONANT & OSBORNE
Local Dealers



Ford Dealers Will Guarantee Used Cars

One of the most important steps yet undertaken to protect used car purchasers and at the same time place the handling of such cars on a more business-like basis is the announcement by Mr. Edsel B. Ford, President of the Ford Motor Company, that operating under a company plan Ford dealers will hereafter place a guarantee upon used Ford cars disposed of by them.

The Ford Motor Company is the first large automobile concern to take direct steps in the matter of used cars. Inasmuch as there are about 50,000 Fords in operation in this country as all other makes combined, it is apparent that the action of the Ford Motor Company will exert a wide influence on the marketing of used cars and in improving conditions generally in that phase of the automobile business.

"Every used Ford car represents so much unused transportation and is of value to someone," Mr. Ford said in his statement regarding the plan. "The Ford dealer through his position and intimate knowledge of the car certainly is the best judge as to the value of this transportation—the best to determine a price on the mileage the car may yet be expected to deliver—that's his business."

"With this advantage the Ford dealer is prepared to give his used car customers, benefits not likely to be obtained elsewhere. "If re-conditioning is necessary he has the work done by trained Ford mechanics using improved methods and genuine Ford parts, and with these economies and advantages he is able to offer the used car to the purchaser at low cost and with a guarantee covering its mechanical fitness." The plan becomes effective at once and places a guarantee on used Ford cars purchased from authorized Ford dealers thereby insuring proper mechanical operation under ordinary driving conditions.

In assuming the direction and supervision of this plan to be carried out by its dealer organization, the Ford Motor Company feels that it is embracing an opportunity to be of greater service to those who purchase used Ford cars.

DODGE BROTHERS COACH

A popular and attractive addition to Dodge Brothers line of motor cars.

Every coach convenience is provided: unfettered vision on all sides, an intimate yet roomy interior, easy handling in traffic, protection for children against open rear doors, modish hardware and finish, balloon tires and smart whipcord upholstery.

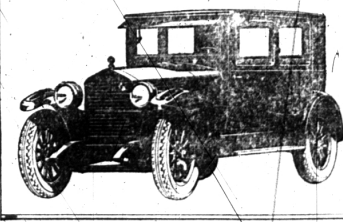
Built on Dodge Brothers sturdy chassis, the Coach will deliver years of dependable service at a very moderate annual cost.

It is available both in the Standard and completely equipped Special types.

Evans-Jackson Motor Co.
119 SOUTH WOODWARD AVE.
PHONE 301 Birmingham, Mich.



The finest ESSEX ever built



Today's Essex is the finest ever built. It is the smoothest, most reliable Essex ever built.

It is the best looking, most comfortably riding Essex ever built.

And the price, because of volume, is the lowest at which Essex ever sold.

ESSEX COACH \$895

Flight and Tax Extra

BOUGHNER BROS. GARAGE

LOCAL DISTRIBUTORS

120 S. Woodward Ave.

Phone 70