



Auto Garage
 W. J. THORNTON - Proprietor
 General Auto Repair Work
 BROWNELL STREET

Dodge Owners Get Surplus Auto Value

"That purchasers of Dodge Brothers cars receive surplus value on their investment in the form of satisfactory, reliable service over a far greater number of miles than is commonly accepted as the standard life of an automobile is already firmly established in the public mind," says C. E. Evans, of Evans-Jackson Motor Co., local Dodge dealer, "but some of the various items that contribute to this surplus value have never received the mention which is their due."

"Take, for instance, Dodge Brothers' method of fabricating ring gears: here is a striking example of the care in manufacture which long has been characteristic with Dodge Brothers, and which is largely responsible for the attribute of long life inbuilt in the car."

All Parts Strengthened
 "First of all Dodge Brothers have more staunchly than strict manufacturing practice required. They have gone beneath the exterior of the car and strengthened every part beyond the requirements of normal usage."

"Although rarely considered by the prospective purchaser, these parts are the very essentials of the life of the car and really determine its value. The ring gear is a very good illustration of the research work which Dodge Brothers metallurgists performed in order to obtain the best working part."

Special Process
 "A thick round steel bar of the best steel obtainable is heated to a white heat, then flattened out under the smashing blows of one of the huge hammers. This semi-laminated steel bar is then laid at an angle on a point and one blow of the huge hammer splits or burr-edges it, and the burr-edges round steel bar now is in the shape of a buttonhole is forged once more to its required thickness. This process runs around the gear and produces equal strength and lasting qualities."

"As Dodge Brothers' cars have more pounds of drop forging in proportion to the weight of the car than any other automobile made, it can be seen that Dodge Brothers process of ring gear manufacture is only one of the items that contribute to surplus value in the car that bears their name."

old salt water seamen and the voyage will bring them back to seas they have sailed before. In starting the Onondaga on its voyage to South America, the Ford Motor Company insures its own export and Atlantic Coast shipping. It is a new and noteworthy development in the automobile industry and one in which the Ford company with its own ships, uses the Great Lakes as a gateway to bring it into closer relationship with its foreign branches.

It likewise has an important bearing upon shipping to salt water from the Great Lakes, illustrating the business expansion and economy which may be expected if the proposed St. Lawrence river development and other projects are carried out. Due to the fourteen-foot draught of the St. Lawrence river locks, the Onondaga left Detroit with a cargo of about 1,500 tons. When the additional cargo is loaded at Montreal, the Onondaga will have on board manufactured parts for 2,100 Ford cars in quest lack of strength. Dodge Brothers have evolved an original method, which, although more costly, insures parts of uniform strength through the retention of the original structural strength of the steel. The process is called buttonholing.

The Onondaga will have on board manufactured parts for 2,100 Ford cars in quest lack of strength. Dodge Brothers have evolved an original method, which, although more costly, insures parts of uniform strength through the retention of the original structural strength of the steel. The process is called buttonholing.

The Onondaga will have on board manufactured parts for 2,100 Ford cars in quest lack of strength. Dodge Brothers have evolved an original method, which, although more costly, insures parts of uniform strength through the retention of the original structural strength of the steel. The process is called buttonholing.

The Onondaga will have on board manufactured parts for 2,100 Ford cars in quest lack of strength. Dodge Brothers have evolved an original method, which, although more costly, insures parts of uniform strength through the retention of the original structural strength of the steel. The process is called buttonholing.

The Onondaga will have on board manufactured parts for 2,100 Ford cars in quest lack of strength. Dodge Brothers have evolved an original method, which, although more costly, insures parts of uniform strength through the retention of the original structural strength of the steel. The process is called buttonholing.

are present. Dancing on a rope between Royal Oak and the Eight-Mile road at the Detroit city limits. The event marked the opening of pavement parallel to the old road between Royal Oak and the Eight-Mile road at the Detroit city limits.

are present. Dancing on a rope between Royal Oak and the Eight-Mile road at the Detroit city limits. The event marked the opening of pavement parallel to the old road between Royal Oak and the Eight-Mile road at the Detroit city limits.

are present. Dancing on a rope between Royal Oak and the Eight-Mile road at the Detroit city limits. The event marked the opening of pavement parallel to the old road between Royal Oak and the Eight-Mile road at the Detroit city limits.

are present. Dancing on a rope between Royal Oak and the Eight-Mile road at the Detroit city limits. The event marked the opening of pavement parallel to the old road between Royal Oak and the Eight-Mile road at the Detroit city limits.

are present. Dancing on a rope between Royal Oak and the Eight-Mile road at the Detroit city limits. The event marked the opening of pavement parallel to the old road between Royal Oak and the Eight-Mile road at the Detroit city limits.

are present. Dancing on a rope between Royal Oak and the Eight-Mile road at the Detroit city limits. The event marked the opening of pavement parallel to the old road between Royal Oak and the Eight-Mile road at the Detroit city limits.

are present. Dancing on a rope between Royal Oak and the Eight-Mile road at the Detroit city limits. The event marked the opening of pavement parallel to the old road between Royal Oak and the Eight-Mile road at the Detroit city limits.

are present. Dancing on a rope between Royal Oak and the Eight-Mile road at the Detroit city limits. The event marked the opening of pavement parallel to the old road between Royal Oak and the Eight-Mile road at the Detroit city limits.

are present. Dancing on a rope between Royal Oak and the Eight-Mile road at the Detroit city limits. The event marked the opening of pavement parallel to the old road between Royal Oak and the Eight-Mile road at the Detroit city limits.

are present. Dancing on a rope between Royal Oak and the Eight-Mile road at the Detroit city limits. The event marked the opening of pavement parallel to the old road between Royal Oak and the Eight-Mile road at the Detroit city limits.

are present. Dancing on a rope between Royal Oak and the Eight-Mile road at the Detroit city limits. The event marked the opening of pavement parallel to the old road between Royal Oak and the Eight-Mile road at the Detroit city limits.

are present. Dancing on a rope between Royal Oak and the Eight-Mile road at the Detroit city limits. The event marked the opening of pavement parallel to the old road between Royal Oak and the Eight-Mile road at the Detroit city limits.

are present. Dancing on a rope between Royal Oak and the Eight-Mile road at the Detroit city limits. The event marked the opening of pavement parallel to the old road between Royal Oak and the Eight-Mile road at the Detroit city limits.

are present. Dancing on a rope between Royal Oak and the Eight-Mile road at the Detroit city limits. The event marked the opening of pavement parallel to the old road between Royal Oak and the Eight-Mile road at the Detroit city limits.

are present. Dancing on a rope between Royal Oak and the Eight-Mile road at the Detroit city limits. The event marked the opening of pavement parallel to the old road between Royal Oak and the Eight-Mile road at the Detroit city limits.

are present. Dancing on a rope between Royal Oak and the Eight-Mile road at the Detroit city limits. The event marked the opening of pavement parallel to the old road between Royal Oak and the Eight-Mile road at the Detroit city limits.

are present. Dancing on a rope between Royal Oak and the Eight-Mile road at the Detroit city limits. The event marked the opening of pavement parallel to the old road between Royal Oak and the Eight-Mile road at the Detroit city limits.

are present. Dancing on a rope between Royal Oak and the Eight-Mile road at the Detroit city limits. The event marked the opening of pavement parallel to the old road between Royal Oak and the Eight-Mile road at the Detroit city limits.

DODGE BROTHERS SPECIAL TYPE-A SEDAN

Dodge Brothers craftsmanship is evident in every detail.

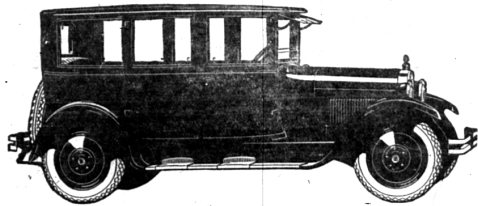
They have achieved an effect of pleasing smartness, while conforming strictly to the dictates of conservative good taste.

Every item of special equipment is obviously an integral part of the basic design—not an afterthought.

Five Balloon-Type Tires

Evans - Jackson Motor Co.
 119 SOUTH WOODWARD AVE.

Phone 301 Birmingham, Mich.



Tours England And Scotland In Oakland
 Take your own car with you on your trip abroad is the advice of William Lister of Evanston, Ill., after completing a 3,000 mile trip through England, Scotland and part of the European continent.
 Mr. Lister, driving an Oakland Six which he took over with him, was enthusiastic over the joy of touring in his own car and suggested that trips through England and Scotland especially should be made in a motor car—your own motor car.
 "One may rent a car over there," he explains, "but I am sure it is much better to have your own car with which you are entirely familiar. My motor trip in the Highlands of Scotland was a delightful experience. On one occasion we made a trip one day which normally by train and bus, would consume three days. And while traveling through the lonely glens and over the heather-clad hills, we made frequent halts which the use of the motor car as a conveyance conveniently permitted."
 "Our Oakland was delivered to the steamer wharf in Montreal the evening before sailing. This was the last we saw of the car until it was unloaded on the pier in Glasgow equipped with the British license plates and membership in the automobile association. This is part of the steamer service."
 Mr. Lister gives an interesting account of the activities of the British automobile association. He said that one of the unique services rendered by the association was the employment of agents to rate the highways to render aid to motorists belonging to the organization.
 "During my entire trip I never had a wrench on the car, not even was a spark plug removed nor a tire taken off. The tires were never touched, which I think is a good test for four-wheel brake efficiency, especially in a hilly country such as that through which we traveled while abroad."
 "It may also be interesting to you to know that the cost of transporting my car from seaboard to seaboard and return, including license plates for England and Scotland, automobile association license and ten gallons of gasoline, which was put into the car after being unloaded from the steamer ship was \$30. I think anyone touring in England and Scotland, particularly, should try it some day."
 "All driving is on the left-hand side of the road and is by no means difficult. After a few hours' driving, with a little concentration, one soon becomes accustomed to keeping to the left; besides, there is but little traffic on the highways of Scotland and England, which makes traveling much more enjoyable."

Ford Ship Clears For South America
 Detroit, Mich., Nov. 20. Detroit sent its first ship to a distant foreign port Wednesday afternoon, November 20th, when the Steamer Onondaga of the Ford Motor Company's fleet sailed from the River Rouge plant for Buenos Aires, Argentina, South America. It carried a cargo of manufactured automobile parts, the first of the kind ever exported direct from any Great Lakes port.
 The Onondaga left the dock of the Ford plant at the Rouge to the Detroit river and then headed out into the open water with a cargo of 1,500 tons, as the first step of the voyage to the South American coast.
 Departure of the Onondaga created something of a furor in the offices of the customs officials here, where clearance papers were issued for the first time to a ship sailing to a foreign port.
 Application for the papers from the Ford Motor Company presented the officials with something new so far as the port of Detroit is concerned and there was a hurried perusal of records and rules governing the issuance of such papers.
 While the Onondaga is the first merchant vessel to sail from Detroit to a foreign port, crews and several members of the ship's crew are all

ROYAL OAK CELEBRATES WIDENING OF WOODWARD
 With the completion of part of the 244-foot wider Woodward avenue reaching as far north as the Ten-Mile road, Royal Oak last Friday night went into raptures by staging a road, peppy carnival. Several thousand people, from places along the way between Detroit and Pontiac

Buick Continues its Leadership

For the seventh consecutive year Buick has first choice of space at the National Automobile Shows. This signal honor is awarded annually by the National Automobile Chamber of Commerce to the manufacturer-member having the largest volume of business for the preceding twelve months.

In winning and in maintaining this enviable position year after year, Buick has demonstrated conclusively that the true value of any automobile is reflected in the consistency with which the public buys it.

Since the introduction of the 1925 Buick models, public patronage has increased to an even greater degree.

A tribute to the Buick engineering skill and manufacturing ability that have provided newer and better Buick cars without departing in any way from the fundamentals of power, economy and dependability for which all Buicks have been famous.

ARTHUR ROSE BUICK SALES PONTIAC

James E. Valentine, Salesman
 117 WORTH ST. BIRMINGHAM
 At Pontiac Sales Room Every Friday

When better automobiles are built, Buick will build them

Evans-Jackson Motor Co.

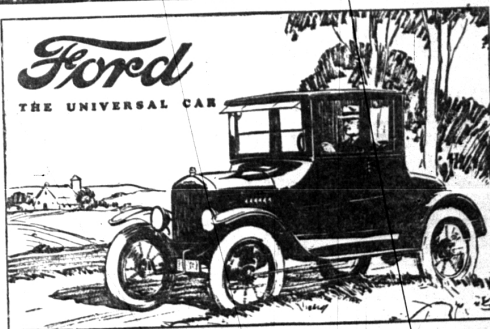
Service Station
 Raybestos Brake Service
 The Alemite Lubricating Service and Alemite Products
 The Gabriel Snubber Sales and Service
 119 S. WOODWARD AVENUE
 Birmingham, Mich.

Owners find in the Oakland Six speed beyond need when the open road invites—a wealth of power to pull when the grade is steep or the going hard—a purring engine when traffic drags—a flying start when the congestion clears—and perfect control at all times with four-wheel brakes.

Standard equipment includes four-wheel brakes, disc wheels, balloon tires, permanent top, Fisher Body, one-piece ventilating windshield on closed tops, Duro finish, centralized controls, indirectly-actuated, unit instrument panel, automatic spark control. (Glass enclosures for open cars at small added cost.)
 Roadster \$1095; Touring \$1195; Special Roadster \$1195; Special Touring \$1195; Landau Coupe \$1295; Coupe for Four \$1495; Sedan \$1545; Landau Sedan \$1645. Prices at Factory

Bloomfield - Oakland Sales and Service
 119 N. WOODWARD - Phone 550 - Birmingham, Mich.

OAKLAND
 PRODUCT OF GENERAL MOTORS



More Comfort for Less Money
 The Ford Coupe is the lowest priced closed car on the market—yet one of the most satisfactory.

Coating less to buy and maintain, every dollar invested brings greater returns in comfortable, dependable travel.

Sturdy, long-lived and adapted to all conditions of roads and weather—it meets every need of a two-passenger car.

Steadily growing demand and the resources and facilities of the Ford Motor Company have made possible a closed car, at a price millions can afford, rightly designed, carefully built and backed by an efficient service organization in every neighborhood of the nation.

The Coupe \$525
 Fordor Sedan 4685
 Tudor Sedan 390
 Touring Car 285
 Runabout 265
 On open models demountable rims and starter are \$60 extra.
 All prices f.o.b. Detroit

Ford Motor Company Detroit
CONANT - OSBORNE - Local Dealers