

AUTOMOBILES

CHRYSLER SHOWS IN FLEXIBILITY

Distance covered by a motor car on the road within a given time depends more on outstanding flexibility and ease of handling than on sheer speed. This was strikingly illustrated recently when a Chrysler six averaged 51.42 miles an hour in a

test road run of 94.1 miles, between Portsmouth and Columbus, Ohio, without being allowed to travel more than 85 miles an hour at any time. The run is regarded by officials of the Chrysler Motor Corporation as being one of the most important tests of an automobile's roadability ever attempted, according to Wurstler & Stapleton, local dealers. Few people realize, these officials

point out, that the distance a motor car can cover in a given time is not nearly as much a question of its speed as of its flexibility—of rapid change of speed and easy handling, fast pick-up and ability to keep out of threatened traffic tangles. During the trip the Chrysler had to go through four right angle under-ground railroad crossings, around 15 right angle corners, through eight in-

corporated towns, five unincorporated villages, and over six railroad crossings. The quickness and precision with which it could be slowed down at these various points and again raised to a fast pace is shown in the fact that it averaged more than 50 miles an hour without traveling more than 65, and though higher speed could have been attained, the run was one of the half dozen fastest ever made by an automobile in a distance road test. It was by far the fastest ever made between Portsmouth and Columbus.

FORD SALES PASS THE 750,000 MARK

May has opened with a bigger demand for Ford products than any month so far this year, the Ford Motor Company announced yesterday. Ford retail sales in the United States during the first 10 days of May averaged 3,283 daily, exceeding the last 10-day period of the record breaking sales month of April and indicating the continued upward trend of the market. Figures just compiled show a total of 757,023 Ford units retailed to customers from January 1st to and including May 10th, of which Ford car and truck deliveries alone show a gain of 102,158 over the same period a year ago. With the increase already attained this month and with the present outlook for business, the company anticipates a new high sales figure in May.

GIVE A PACKARD TO THEIR PASTOR

Dr. Charles Herbert Rust, pastor of the Wilkinsburg Baptist church, has found an automobile to be an invaluable aid to the daily work of a minister. "It is of tremendous help," said Dr. Rust, "when one considers the many demands which come to a preacher today in a widely scattered parish. On one day he may need to answer calls from all over a large territory." Dr. Rust owned a car in Scranton and Rochester, Pa., and used it in his work. When Dr. Rust was called to Wilkinsburg from Scranton, members of the Immanuel Baptist and Six touring car. The Wilkinsburg church announced to Dr. Rust that it would pay the entire cost of upkeep and operation.

52 issues of the Birmingham Eccentric for \$1.50. Telephone or bring in your subscription this week. Adv. 35.

EXCEPTIONAL RIDING COMFORT

Owners continue to comment on the marked riding comfort of Dodge Brothers Motor Car.

Increased chassis length, low-swung body and generous seat depth have much to do with this.

Primarily, however, it must be accredited to the greater buoyancy of the new spring equipment. The rear springs are ten inches longer, and underslung.

EVANS-JACKSON MOTOR CO.
119 SOUTH WOODWARD AVE.

Birmingham Phone 301 Michigan



Michigan and Her Railroads

Since 1920, when the Government returned Railroad operation to private enterprise, service in Michigan has become yearly more dependable—more nearly adequate.

That Service is today the best Michigan has ever enjoyed.

As a result there has come into being between the State's 24 steam Railroads and the public they serve, a spirit of pride and mutual good will.

Geographical isolation has made railroad service a local more than a national problem in both Peninsulas of Michigan. Within the enveloping barriers established by our Great Lakes, Michigan and her Railroads can prosper only by prospering together. State and carriers become thus members of a close community of interest.

Michigan Railroads realize this fact and make it fundamental in all details of management and operation.

The public can also recognize this situation by neighborly cooperation and by insisting that the roads be repaid by receiving, in national and state supervision, the same square deal.

We invite from you any suggestion of more ways in which we can consistently better our service.

Michigan Railroad Association
508 Railway Exchange Bldg., Detroit, Mich. (8-27)



We Make It Easy For All Motorists to Equip With Full-Size Balloons

Firestone

Simplified application of

BALLOON GUM-DIPPED CORDS

at minimum cost



AMERICA SHOULD PRODUCE ITS OWN RUBBER

Equip Now for Summer Driving
We are Stocked and Organized to Handle Any Car. Here is your opportunity to improve your present car—better appearance, superior comfort and safety and a new standard of low-cost operation. You will save money on the reduced car depreciation, lower maintenance and fuel expense and long tire mileage. Full-size Gum-Dipped Balloons as we apply them are an economy.

See us. Get a demonstration. Within a few hours you have them on your car. Come in and get our reasonable prices—less an allowance for your old tires. Put your car on Balloons NOW for the summer motoring season.

Local motorists are benefiting from the simplified method of applying full-size Balloon Tires, made possible by Firestone. It is an easy and inexpensive job for us to handle your change-over. We have special Firestone units, consisting of tires, tubes, rims and wheel spokes, all built by Firestone according to the highest quality standards. We also have special shop equipment which Firestone has developed for us, giving us an exclusive advantage in turning out an accurate wheel job which exactly fits your present hubs. The cost is little or no more than a set of rims and we can equip your car almost as quickly as a tire change can be made.

Get All the Benefits of the Real Balloon

Insist on the full-size Gum-Dipped Balloon, and get all the benefits in riding comfort, safety and economy. Over 20 car manufacturers and over 40,000 car owners have already equipped with them.

We guarantee you a carefully engineered and perfectly balanced job, at minimum cost. And if you are not completely satisfied when you get them on, we will re-apply your old tire equipment at no cost to you.

CONANT & OSBORNE

BLOOMFIELD CENTER SERVICE STATION,
BLOOMFIELD HILLS, R. F. D. NO. 3, BIRMINGHAM

SAM PLATT, Big Beaver
R. F. D. BIRMINGHAM

Most Miles per Dollar

Why it's True Blue

THE Oakland Six is true blue because it was designed with one very definite purpose in mind—to make it the finest light six in its class. Take Oakland closed cars for example. Here are real automobiles. They are true blue because their distinctive Fisher-built bodies are real closed-car bodies—with no makeshifts nor compromises entering into their construction or appointments, inside or out.

Oakland's Six-Cylinder Smoothness Means Greater Closed-Car Comfort

The Oakland engine is true blue because in it the many natural advantages of a "Six" have been developed to a degree that will delight you.

There is quietness at all speeds and a freedom from annoying vibration which, you will agree, is essential to complete closed-car satisfaction; there is extreme flexibility which makes gear changing rarely necessary; there is a surprising ability to respond to unusual demands quickly and without fuss—all of which qualities you will surely seek in selecting your next closed car.

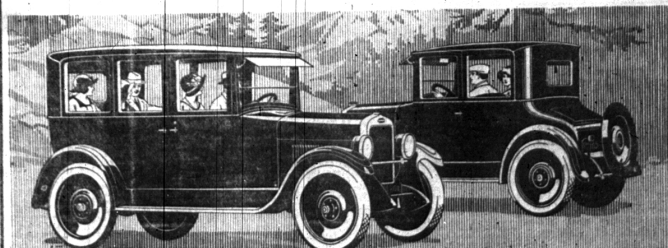
Then there are four-wheel brakes (you certainly should not buy a car without this proved essential); exclusive centralized controls on the steering wheel; a special body finish which retains its lustre indefinitely, and a dozen other features.

Isn't it true that the problem of choosing the right car—closed or open—is merely a matter of getting the most and the best for your money? Examine the True Blue Oakland Six. Ride in it. Drive it yourself. We welcome frank comparisons.

Touring Car	895	Sport Touring	9195	Business Coupe	8195	Sedan	81445
Roadster	895	Sport Roadster	1095	Coupe for Four	1395	Prices f.o.b. Factory	

Bloomfield Oakland Sales and Service

119 N. WOODWARD PHONE 550 Birmingham



Sedan \$1445



Coupe for Four \$1395