

MONTH END SALE

Friday, Saturday and Monday, June 27th, 28th, and 30th, 1924

Men's Socks Full mercerized All sizes and colors 25c Pair 4 Pair for 89c (Men's Department)	Men's Caps New Summer styles Sizes 6 3/4 to 7 1/2 25% Discount (Men's Department)	Ladies' Silk Hose Famous Pigeon Brand All sizes and colors \$1.39 pair (Main Floor)	Picnic Sets 5 plates, 5 napkins, 1 tablecloth 5c set (Economy Basement)	Ladies' Step-Ins Crepe or voile \$.25 values 95c (Economy Basement)	Girls' Hats Choice of Stock Values to \$4.00 \$1.00 each (Economy Basement)	Girls' Dresses Gingham or Voiles Sizes 2 to 14 1/2 Price (Economy Basement)
Boys' Wash Suits Sizes 3 to 10 years Blue, Green, Tan, Grey 25% Discount (Men's Department)	Berkley Cambric Ideal underwear cloth 29c value 4 yards for 95c (Main Floor)	Ladies' Union Suits Fine gauze weight Lace or tight knee 48c suit (Main Floor)	Paper Spoons 12 in carton 25c value 13c carton (Economy Basement)	Cotton Overblouses White, or Beige \$.25 values \$1.95 (Economy Basement)	Rompers & Creepers All new spring styles \$1.50 value for ----- \$1.19 \$1.25 value for ----- 98c (Economy Basement)	Ladies' Dresses All new styles Choice of stock 10% Discount (Economy Basement)
Men's Overalls Tractor Brand Full size, with bib \$1.48 (Men's Department)	Elastic Girdles Double V Brand \$1.25 values 98c (Main Floor)	32-inch Gingham Fancies or plains Choice of 35c values 27c yard (Main Floor)	Talcum Powder Mavis Brand Summer special 7c or 3 cans for 20c (Economy Basement)	Black Satene Aprons Cretone or braid trim Values to \$1.95 98c (Economy Basement)	Girls' Bloomers White, Flesh and Black Fine quality Satinette 69c (Economy Basement)	Corset Covers Band or built-up styles Values to \$2.00 69c (Economy Basement)

PALMER-BEGOLE & COMPANY

"Not Worth a Continental" was more than slang those days

Imagine having a bill to pay in the days just after the Revolution — when Continental script "wasn't worth a Continental"—and coin was scarce.

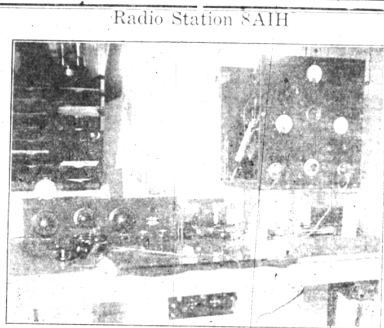
What a contrast between then and today. Now checks are universally used—the thorough business man and woman pays all bills by check. So they have a record of all expenditures—and avoid carrying around large sums, with danger of loss or theft.

Open a checking account here—where courteous, prompt attention is paid to every depositor, every time.

First State Savings Bank

BIRMINGHAM, MICHIGAN
PLAY SAFE—PAY YOUR BILLS BY CHECK
Capital and Surplus - \$125,000.00

"STRENGTH, SERVICE AND COURTESY"



Radio Station 8AHH

This splendid set is owned by Russell McBride of South Woodward Ave. See story on Page One.

R. J. Coryell, Local Man, Lauded As Builder Of Denver's Beauty

R. J. Coryell, locally prominent, a himself again riding horseback with member of the school board and own. General Palmer, stopping to gaze er of the Coryell Nursery on West Maple road, has been lauded to more or that improvement. Then he sees highly by his fellow townsmen and the actual picture, in civic improve- ments, of what they visioned. He ad- mires than he has by citizens and De- signs of Park System, intimate friend of General Palmer.

Extracts from the article follow: "I come back after 20 years like a ghost, to walk around and see the realization of plans that General Palmer made. Your city is hand polish- ed, beautiful! If General Palmer were to come back today he would be more than delighted."

Does this, from R. J. Coryell, who was the landscape gardener of Gen. William J. Palmer, founder of Color- ado Springs, at Glen Erie and had been superintendent of parks throughout the Pikes Peak region, give you, residents of the city, a thrill? To Mr. Coryell this score of years has been swept aside. He sees He had, you might say, retired and

was looking about with view to ex- pending a large amount of money in the beautification of this city and region.

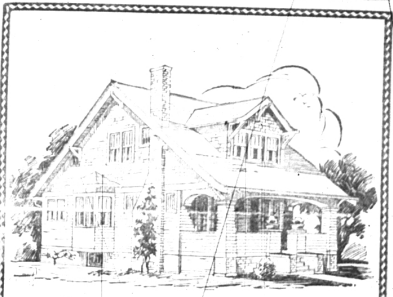
"The first thing that I did on com- ing here was to try about a year of study of the existing conditions and the soil of the region. It had to be determined what would grow best, what would be planted and all that sort of thing."

"I first went to work on Palmer's estate here in Austin, Texas. It was there that I first saw the beauti- ful work of the landscape gardener. They were not only interested in the beauti- ful appearance of the estate, but in the long avenue of cypress lawn. This I put in mind to break up the hard- ness of it. I remember well plan- ning these. We started right in front of Mr. Donaldson's home at Sun Rafael street."

"I remember very distinctly how General Palmer came to lay out and bring about Monument Valley park. This was a low area along the creek and he said that if it were allowed so to remain, people would build shanties in there, dump tin cans and rubbish, and that it would become a very unsightly place in the city. He wanted no such place."

Much as he talks of the direct and clear vision of General Palmer, Mr. Coryell himself has an extremely deli- cious and interesting way of speak- ing, and his own vision paralleled that of General Palmer, as he carried out the plans which the founder of the city made, in many things. No other pleasing conversationalist could be found, and each sight as the pan- orama of accomplishments unfolds before his eyes, prompts new reminis- cences.

He himself has been a builder, too. His establishment is now 17 miles from Detroit, but twice he has moved on as the widening city encroached upon his property, making it too valua- ble for greenhouse use. He has suc- ceeded greatly and has become an authority on beautification of grounds and streets, speaking much before various organizations in his state and others. But he says that authoritative work, still retains a description and picture of the center parking on Cascade avenue in Color- ado Springs as what it considers a good example of that kind of munici- pal beautification.



BUILDING? Let Us Help You Decide

the best arrangement of rooms, show you sketches of homes similar to your own ideals, and we'll be glad to help you select the grades and kinds of materials best suited to your needs.

Drop Into Our Office

Look over the many designs shown in our plan books, especially the NEW BOOK OF HOME PLANS, and talk it over with us. We'll be glad to put your own ideas into a sketch of your future home and give you an accurate estimate of the cost of the completed building.

All this service puts you under no oblig- ation to us. It is our pleasure to assist you.

R.C. Moulthrop Lumber Co.

LUMBER COAL AND BUILDERS SUPPLIES
BIRMINGHAM, MICHIGAN



Fireworks

Unexcelled Brand

On Sale Tuesday, July 1st

QUALITY **WILSON DRUG CO.** SERVICE

104 S. WOODWARD AVE. PHONE 35

