



Maxwell-Chrysler Increases Output

Detroit, June 25—Production of the Maxwell-Chrysler Chalmers organization for the first five months of 1924 was 18.4 per cent higher than for the corresponding period in 1923, it was learned here yesterday.

Though the unprecedented demand for the Chrysler Six has contributed considerably to this material increase, Maxwell production also showed a substantial gain over the same period last year.

Closed car output for both the Maxwell and Chrysler divisions is running high. During the first four months of 1924, Maxwell closed car production averaged 54.4 per cent, compared with 24.5 per cent for the similar period a year ago and 37.5 per cent for the entire 1923 year.

Chrysler output to date has averaged 47.6 per cent closed. The high Maxwell ratio is due largely to the great popularity of the good Maxwell club sedan and club coupe—both enclosed models—whereas the Chrysler ratio is occasioned by the tremendous popularity of the Chrysler roadster, for which demand has continued to be considerably in excess of an unusually large production.

Officials of the corporation expect the Maxwell to register greater sales gains during the remainder of the year. Stocks of Maxwell cars in dealers' hands average approximately the same per cent as at this time last year. Chrysler stocks in dealers' hands are entirely sold, demand for Chryslers exceeding supply throughout the country.

Races Prove Value Of Smaller Motor

The remarkable record established in the recent Indianapolis speedway races in the Chrysler car for the high speed motor of the small piston displacement, explains Benjamin Jerome, chief engineer of the Oakland Motor Car company.

A great change in automobile engine design has come since Ray Harroun won the first 500 mile race at Indianapolis 13 years ago with a big 600 inch engine.

Smaller motors have constantly been reduced in size and at the same time have had speed and endurance increased. Oakland always advocated the small bore, long stroke motor and until very recently we have had the smallest available displacement six cylinder motor used in standard construction.

"Smaller motors mean smaller and lighter reciprocating parts and these in turn mean reduced motor strains and bearing troubles and result in faster time. A small model Oakland coupe still holds the speed record on the Pacific coast from Los Angeles to San Diego.

"Smaller motors, in addition, make for economy. Oakland has demonstrated this economical feature in many of the great annual economy runs on the Pacific coast. With high speed, light weight, and perfect lubrication you likewise obtain smooth operation.

"The Oakland motor is also similar to those used in racing cars in that both employ force feed lubrication through a hollow crankshaft insuring positive oiling at all speeds and under all conditions. Centrifugal pump for water is also common to both Oakland and racing cars.

FORD CARS BY THE MILLION.

Announcement of the Ford Motor Company that it has produced 10,000,000th Ford car had been produced brings to light the interesting fact that 10 million cars all are the famous Model T.

The Company from its organization in June, 1903, until late in 1908 kept experimenting to determine upon a standard model. Approximately a million cars of different models were produced prior to the fall of 1908 when the now universal Ford Model T was developed and introduced to the motoring public. Popularity of the Ford Model T is best told in the following production record by millions:

Table with columns: Car No., Date, Production. Rows include dates from Oct 1, 1908 to June 4, 1924.

BUILD WORLD'S LARGEST TIRE AT AKRON FACTORY.

The largest tire in the world is being built at the Goodrich factories in Akron, Ohio.

The tire, designed by the engineering division of the United States Army Air Service, with whom Goodrich engineers collaborated, will measure more than five feet high with cross-sectional measurement of 14 inches.

Goodrich engineers estimate that the building of this tire, which is the first of a set, will require approximately 75 yards of fabric, 52 inches wide, several pounds of air wire for the bead construction and approximately 70 pounds of compounded rubber. If this amount of raw material was applied in the construction of 30 x 3 1/2 inch tires, it would make thirty-five of them.

However, more rubber would be needed in the construction of the same automobile cases, for a smaller proportionate amount of rubber is used in the construction of airplane tires owing to the small amount of wear experienced by the tread.

The special molds for the construction and vulcanization of this big tire requires special machinery and handling. The equipment was recently completed at the Goodrich plant, where plans have been made to build many of these large tires as the tests are completed on the one now being built.

The huge tire will be part of the equipment on a new type of giant aircraft, which is soon being developed at McCook Field, Dayton, Ohio. The tire—a 64 x 14 inch straight bead cord—will sustain a load of 20,000 pounds at an inflation pressure of 75 pounds. A special wheel has been designed to accommodate this new tire. The wheel assembly will tip the scales at better than 300 pounds.

INSURANCE POLICIES MAY BE RENEWED.

An opportunity has been given by the United States Veterans Bureau to ex-servicemen of the World War to reinstate any part of their War Term Insurance before March 3, 1926, according to Miss Carrie M. Taylor, Secretary of the Oakland County Red Cross Chapter with headquarters at Pontiac. They can continue to pay the premium to the Government Life Insurance. In order to do this it is only necessary to pay one premium at the old rate and one premium at the new.

Southfield Reformed Presbyterian Church.

Services at Church First Street, Woodward Avenue, south of the D. U. R. waiting room. Sunday, 11 a.m. Sunday school, same hour. Wednesday evenings 8 o'clock. All are invited. Free Reading Room, open Tuesday, Thursday and Saturday from 2:30 to 4:30 p.m. and Wed. from 7 to 8 p.m.

First Baptist Church.

The services of the Baptist church, corner of Bates and Willett streets, on Sundays until the first Sunday in August will be held at the home of Mrs. H. J. Howe, of 400 Hanna street for an all day session. Those feeling the need are cordially invited to come in at any time during the day.

First Methodist Episcopal Church.

10 a.m., class meeting; C. E. Chamberlain, leader. 10:30, morning worship, theme, "The Seen and the Unseen." 12 m., Sabbath school quarterly meeting. Be ready with a good question. 6:30 p.m., Epworth League every member comes, a good program ready.

Southfield Reformed Presbyterian Church.

Services at Church First Street, Woodward Avenue, south of the D. U. R. waiting room. Sunday, 11 a.m. Sunday school, same hour. Wednesday evenings 8 o'clock. All are invited. Free Reading Room, open Tuesday, Thursday and Saturday from 2:30 to 4:30 p.m. and Wed. from 7 to 8 p.m.

First Baptist Church.

The services of the Baptist church, corner of Bates and Willett streets, on Sundays until the first Sunday in August will be held at the home of Mrs. H. J. Howe, of 400 Hanna street for an all day session. Those feeling the need are cordially invited to come in at any time during the day.

First Methodist Episcopal Church.

10 a.m., class meeting; C. E. Chamberlain, leader. 10:30, morning worship, theme, "The Seen and the Unseen." 12 m., Sabbath school quarterly meeting. Be ready with a good question. 6:30 p.m., Epworth League every member comes, a good program ready.

Southfield Reformed Presbyterian Church.

Services at Church First Street, Woodward Avenue, south of the D. U. R. waiting room. Sunday, 11 a.m. Sunday school, same hour. Wednesday evenings 8 o'clock. All are invited. Free Reading Room, open Tuesday, Thursday and Saturday from 2:30 to 4:30 p.m. and Wed. from 7 to 8 p.m.

First Baptist Church.

The services of the Baptist church, corner of Bates and Willett streets, on Sundays until the first Sunday in August will be held at the home of Mrs. H. J. Howe, of 400 Hanna street for an all day session. Those feeling the need are cordially invited to come in at any time during the day.

First Methodist Episcopal Church.

10 a.m., class meeting; C. E. Chamberlain, leader. 10:30, morning worship, theme, "The Seen and the Unseen." 12 m., Sabbath school quarterly meeting. Be ready with a good question. 6:30 p.m., Epworth League every member comes, a good program ready.

Southfield Reformed Presbyterian Church.

Services at Church First Street, Woodward Avenue, south of the D. U. R. waiting room. Sunday, 11 a.m. Sunday school, same hour. Wednesday evenings 8 o'clock. All are invited. Free Reading Room, open Tuesday, Thursday and Saturday from 2:30 to 4:30 p.m. and Wed. from 7 to 8 p.m.

First Baptist Church.

The services of the Baptist church, corner of Bates and Willett streets, on Sundays until the first Sunday in August will be held at the home of Mrs. H. J. Howe, of 400 Hanna street for an all day session. Those feeling the need are cordially invited to come in at any time during the day.

First Methodist Episcopal Church.

10 a.m., class meeting; C. E. Chamberlain, leader. 10:30, morning worship, theme, "The Seen and the Unseen." 12 m., Sabbath school quarterly meeting. Be ready with a good question. 6:30 p.m., Epworth League every member comes, a good program ready.

Church and Sunday School

Services at Church First Street, Woodward Avenue, south of the D. U. R. waiting room. Sunday, 11 a.m. Sunday school, same hour. Wednesday evenings 8 o'clock. All are invited. Free Reading Room, open Tuesday, Thursday and Saturday from 2:30 to 4:30 p.m. and Wed. from 7 to 8 p.m.

Christian Missionary Alliance.

Come and hear the word preacher Sunday at 3:00 p.m. Corner of Bates and Merrill streets. It will be worth bearing.

Southfield United Presbyterians.

Rev. W. T. Armstrong, minister. Preaching services, 11 a.m.; Sabbath school, 12 noon; Charles Parks, superintendent. Young people's meeting and Bible study, 8 p.m. at home of Stewart Reid.

First Baptist Church.

The services of the Baptist church, corner of Bates and Willett streets, on Sundays until the first Sunday in August will be held at the home of Mrs. H. J. Howe, of 400 Hanna street for an all day session. Those feeling the need are cordially invited to come in at any time during the day.

First Methodist Episcopal Church.

10 a.m., class meeting; C. E. Chamberlain, leader. 10:30, morning worship, theme, "The Seen and the Unseen." 12 m., Sabbath school quarterly meeting. Be ready with a good question. 6:30 p.m., Epworth League every member comes, a good program ready.

Southfield Reformed Presbyterian Church.

Services at Church First Street, Woodward Avenue, south of the D. U. R. waiting room. Sunday, 11 a.m. Sunday school, same hour. Wednesday evenings 8 o'clock. All are invited. Free Reading Room, open Tuesday, Thursday and Saturday from 2:30 to 4:30 p.m. and Wed. from 7 to 8 p.m.

First Baptist Church.

The services of the Baptist church, corner of Bates and Willett streets, on Sundays until the first Sunday in August will be held at the home of Mrs. H. J. Howe, of 400 Hanna street for an all day session. Those feeling the need are cordially invited to come in at any time during the day.

First Methodist Episcopal Church.

10 a.m., class meeting; C. E. Chamberlain, leader. 10:30, morning worship, theme, "The Seen and the Unseen." 12 m., Sabbath school quarterly meeting. Be ready with a good question. 6:30 p.m., Epworth League every member comes, a good program ready.

Southfield Reformed Presbyterian Church.

Services at Church First Street, Woodward Avenue, south of the D. U. R. waiting room. Sunday, 11 a.m. Sunday school, same hour. Wednesday evenings 8 o'clock. All are invited. Free Reading Room, open Tuesday, Thursday and Saturday from 2:30 to 4:30 p.m. and Wed. from 7 to 8 p.m.

First Baptist Church.

The services of the Baptist church, corner of Bates and Willett streets, on Sundays until the first Sunday in August will be held at the home of Mrs. H. J. Howe, of 400 Hanna street for an all day session. Those feeling the need are cordially invited to come in at any time during the day.

First Methodist Episcopal Church.

10 a.m., class meeting; C. E. Chamberlain, leader. 10:30, morning worship, theme, "The Seen and the Unseen." 12 m., Sabbath school quarterly meeting. Be ready with a good question. 6:30 p.m., Epworth League every member comes, a good program ready.

Southfield Reformed Presbyterian Church.

Services at Church First Street, Woodward Avenue, south of the D. U. R. waiting room. Sunday, 11 a.m. Sunday school, same hour. Wednesday evenings 8 o'clock. All are invited. Free Reading Room, open Tuesday, Thursday and Saturday from 2:30 to 4:30 p.m. and Wed. from 7 to 8 p.m.

First Baptist Church.

The services of the Baptist church, corner of Bates and Willett streets, on Sundays until the first Sunday in August will be held at the home of Mrs. H. J. Howe, of 400 Hanna street for an all day session. Those feeling the need are cordially invited to come in at any time during the day.

First Methodist Episcopal Church.

10 a.m., class meeting; C. E. Chamberlain, leader. 10:30, morning worship, theme, "The Seen and the Unseen." 12 m., Sabbath school quarterly meeting. Be ready with a good question. 6:30 p.m., Epworth League every member comes, a good program ready.

Southfield Reformed Presbyterian Church.

Services at Church First Street, Woodward Avenue, south of the D. U. R. waiting room. Sunday, 11 a.m. Sunday school, same hour. Wednesday evenings 8 o'clock. All are invited. Free Reading Room, open Tuesday, Thursday and Saturday from 2:30 to 4:30 p.m. and Wed. from 7 to 8 p.m.

First Baptist Church.

The services of the Baptist church, corner of Bates and Willett streets, on Sundays until the first Sunday in August will be held at the home of Mrs. H. J. Howe, of 400 Hanna street for an all day session. Those feeling the need are cordially invited to come in at any time during the day.

First Methodist Episcopal Church.

10 a.m., class meeting; C. E. Chamberlain, leader. 10:30, morning worship, theme, "The Seen and the Unseen." 12 m., Sabbath school quarterly meeting. Be ready with a good question. 6:30 p.m., Epworth League every member comes, a good program ready.

DODGE BROTHERS SPECIAL MOTOR CARS

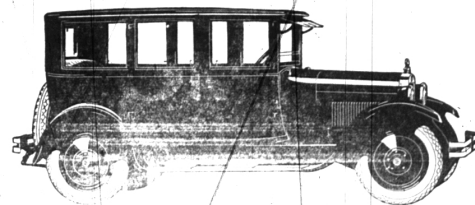
These cars represent Dodge Brothers finest achievement in the creation of genuine motor car beauty.

Identical with the standard product in fundamental design, they are individualized by extensive extra equipment.

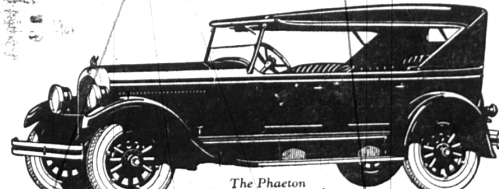
They are available in four popular types: The Touring Car, Roadster, Type-A Sedan and 4-Passenger Coupe.

EVANS-JACKSON MOTOR CO.

119 SOUTH WOODWARD AVE., Birmingham, Michigan. Phone 301.



Smooth As A Canoe On A Calm Lake



The Phaeton

The Chrysler's 3-inch motor is so efficient in its power development that it gives a high-gear speed range of 2 to over 70 miles per hour, combined with gasoline economy safely over 20 miles to the gallon. That's the result of balance, elimination of friction, utilization of fuel, perfect carburetion and correctly applied thermodynamics—the result, in a word, of scientific engineering.

The power flow of the Chrysler Six is without the slightest vibration. It seems impossible until you experience it—and then you too will speak of this car in superlative terms.

So ingeniously engineered that the actual compactness of the car gives surprisingly ample room, and a degree of riding ease never before found in any but the larger, heavier cars.

The Touring, \$1395 The Phaeton, \$1495 The Roadster, 1625 The Sedan, 1725 The Brookings, 1895 The Imperial, 1995 All prices f. o. b. Detroit; tax extra.

The Chrysler Six



Wurster & Stapleton LOCAL DEALERS

129 W. MAPLE PHONE 674

Pick Up -

Your phone and ring us - 847 or 846

—whenever you're preparing a summer day's luncheon. We carry a most tasty array of "Cold Meat Specials" we know will live to your liking. For example:

- New England Ham Meat Loaf Veal Sausage Cooked Pork Loin Jellyed Tongue Boiled Ham Summer Sausage Cooked Corn Beef

Stroups Market

ALWAYS SOMETHING NEW ON

Brunswick Records

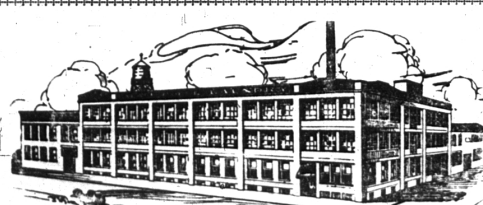
A FEW JUST ARRIVED

- Drifting "Daisy" Medley Wa Wa Waddle Walk "Memories" Medley Oh, Peter! Hoo Doo Man (Many others)

Drop In and Hear These

Leonard Electric Co.

WEST MAPLE AVENUE



A Shady Nook---or Over the Tub?

Don't you realize that making us your "washwoman" for the summer is going to mean many a pleasant afternoon of recreation or rest that you ought to have for your health's sake?

PALACE-MODEL LAUNDRY

Local Branches 142 SOUTH WOODWARD 120 EAST MAPLE Glendale 5680

62 issues of the Birmingham Eccentric for \$1.50. Telephone or bring in your subscription this week. Adv. 35.