

# AVAILABLES

## MILO

one of the oldest and best CLEANERS and DYERS in Detroit now have a wagon going through Royal Oak, Birmingham and Bloomfield Hills Daily.

ALSO CLEANS RUGS, DRAPES AND FURNITURE  
—WILL CALL FOR AND DELIVER TO YOUR HOME—

Phones: Empire 6699 - 1907 - 7329

### OUR WAGONS ARE IN BIRMINGHAM

Tuesday, Thursday and Saturday

Efficient laundry service—the kind that makes you smile with satisfaction.

Everything back but the dirt.

## The Pontiac Laundry Co.

The Soft Water Laundry  
30-32-34 Patterson Street  
PHONE PONTIAC 347 or 1200

## Auto Garage

W. J. THORNTON - Proprietor

General Auto Repair Work  
BROWNELL STREET

TRY OUR FLASH BATTERY COMPOUND

Guaranteed to keep your battery in running condition for one year.

### ADVANCED FEATURES WILL DETERMINE RESALE VALUE OF CAR SAYS W. R. TRACY.

What will your car bring when you trade it in on a new one?

In the sheer joy of possessing a new car, with its new finish and sparkling trimmings, few motorists give full thought to just how advanced in design that car happens to be, points out W. R. Tracy, assistant sales manager of the Oakland Motor Car Company.

As a matter of fact, the advanced features incorporated in a motor car really determine what the car will bring a year later, or two or three years later, Mr. Tracy declares.

"One major improvement that makes for safer riding or more comfortable driving or adds to the life of the car should not be the determining factor," he states, "but rather the sum total of all the vital improvements that good engineering and actual demonstration have proved to be worth while.

"Judged by this standard there are a few cars on the market today that are at least a year in advance of the field.

"The following question should be asked by every motorist in purchasing a car:

"Is it safe? Today any unprejudiced motorist will agree that the answer to this question must include four-wheel brakes—the most important motor car improvement brought out in 1924.

"Is it suitable for all-year driving? A permanent top type of construction and glass enclosures afford all the comfort of a closed car for those who do not wish to pay the difference between the open and closed body types.

Is the driving mechanism simple and convenient to operate? Centralized controls on the steering column—gas, choke, ignition, horn and control of headlights—make for restful driving, day time and night time, and are particularly desirable on long trips. An automatic spark advance takes another worry away from the motorist.

Is the car finish durable, and if marred, inexpensive to refinish? There has been invented recently a new finish known as Duco which obviates the necessity of using varnish

on the car. This finish is already standard on a few cars. It is impervious to the damage of the elements such as rain, sand, gumbo mud and sunlight—and has withstood demonstrations of lighted matches, tar, sulphuric acid and ammonia. Dust and mud can be wiped off with a dry cloth without marring the lustrous finish. A deep scratch can be repaired and the sprayed finish merging into the old so that where they join cannot be detected.

Is the car beautiful in line and interior finish? Unless it has the beautiful, modern lines, and artistic interior equipment, its value will decrease in a short time. To the present type of motor body lines are more obvious than any other feature—regardless of how much more important other features may be.

Last—and probably most important of all, what kind of a motor and chassis has the car? What constitutes a good motor is a long story but is readily discernible by a good mechanic. You can be fairly accurately guided by the reputation a car acquires as to the kind of power plant it possesses.

### TEN MILLIONTH FORD CAR MEETS WITH HEARTY WELCOME ALL ALONG ROUTE.

With half its journey from New York to San Francisco completed, the Ten Millionth Ford car is rolling along across the western states toward the Pacific coast, resting off a vivid and colorful motion picture for the automotive history of America.

Crossing the Missouri river into Nebraska, the sturdy little car that represents ten million transportation units of one kind, left behind it for the eastern section of the United States along the Lincoln Highway a picture that will live long in the memory of the thousands that enjoyed it—a picture filled with enthusiastic scenes, lengthy processions and unique features, all in tribute to the great industry of which the car is a product.

As it progresses westward the picture takes on a new and varied atmosphere, with the great welcoming hand of the West outstretched to receive it and send it on its journey to the coast.

Entry of the Ten Millionth Ford into Chicago was triumphant, if anything, for it was accompanied by a parade of 300 cars. The trip across Illinois was one ovation after another. At Clinton, where the car entered Illinois, the state in which rain has lately been trying to outdo the corn, it was greeted by a big delegation of Ford dealers, a band of Scotch bag pipers and songs written to the optimistic tune of "It Ain't Goin' To Rain No More." At Omaha city officials are preparing a warm welcome for the car, and will participate in the big parade which will feature its entry into Nebraska's metropolis.

**TO WHOM IT MAY CONCERN**—Notice is hereby given that I, George H. Clawson, County Drain Commissioner for the County of Oakland, did on the 21st day of July, 1924, file in the office of the said Drain Commissioner a map of certain lands which are situated in the Birmingham Gardens drain according to Act No. 214, P. A. of Michigan 1923.

### BIRMINGHAM GARDENS

Beginning at the intersection of the Clawson and Maple Avenues in the Village of Clawson, said point being on the south line of section 22, Township 35 North, Range 12 East of the 6th Meridian, Michigan, and near the south corner of section 22, Township 35 North, Range 12 East of the 6th Meridian, a northwesterly direction across the property of Samuel Hunt, in the state of Michigan, to said section 22 to the west line thereof. Thence in the state of Michigan, north across the George H. Clawson property in the south 1/2 of section 22 to the east line of said section 22, thence northwesterly across the property of Wm. Dobson, et al and Oakland County Drain Commissioner, to the east line of the Birmingham Gardens Subdivision at Webster Avenue, thence west on Webster Avenue to Eton Road, thence north on Eton Road to Maple Avenue, thence north on the north line of section 21, thence north on Eton Road through the Birmingham Estates Subdivision and continuing northwesterly through section 21 across the property of I. S. Trowbridge, et al and Wm. Hunt to the north line of section 20, thence north across the east line of section 21 at a point approximately 700 feet north of the S. E. corner thereof, thence north along the section line between sections 21 and 22, 20 and 19, to a point approximately 1240 feet north of the S. W. corner of section 20.

The names of the freeholders whose lands are crossed by said drain are as follows: Samuel Hunt, Freeholder of the Township of Troy; Geo. H. Clawson, et al, Freeholder of the Township of Troy; Wm. Dobson, et al, Freeholder of the Township of Troy; Oakland County Drain Commissioner; I. S. Trowbridge, et al, Freeholder of the Township of Troy; Wm. Hunt, Freeholder of the Township of Troy.

A hearing on the above petition will be held on Monday, August 11th, 1924, at ten o'clock in the forenoon at the corner of Cambridge and Maple Avenues in the Township of Troy.

Filed this 10th day of July, 1924.  
Signed: GEORGE H. CLAWSON,  
County Drain Commissioner.  
1924

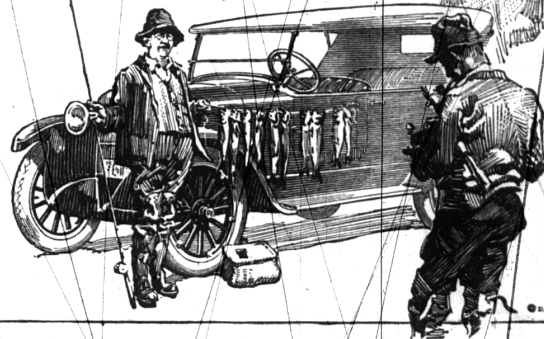
A Want Ad Does Much.

## CONSTANTLY IMPROVED BUT NO YEARLY MODELS

There are obvious benefits to the purchaser in Dodge Brothers policy of making constant, gradual renewments in their product instead of changing from one design to another year after year.

Chief among these is the fact that the car may be operated throughout the full limit of its usefulness without the extra depreciation loss which results from a rapid succession of radically different models.

Evans-Jackson Motor Co.  
119 S. WOODWARD AVE.  
— Phone 301 —  
Birmingham Michigan



## Conserve Your Energy in Summer

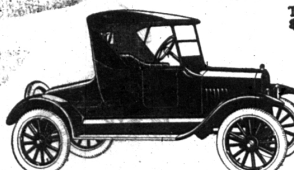
You can, literally, get "recreation"—be "made over" again, when your physical self is rested, your energy and your strength conserved by the use of this Ford Runabout.

Simplicity and good taste are embodied in the lines and appointments of this popular car. Uninterrupted use is insured by nation-wide, "around-the-corner" Ford service. Better get your order in now!

Ford Motor Company  
Dearborn, Michigan

touring Car \$295 Coupe \$325 Touring Sedan \$390 Fordor Sedan \$468  
All prices f. o. b. Detroit

CONANT & OSBORNE, South Woodward  
PHONE 16 Birmingham, Mich.



The Runabout  
\$265  
F. O. B. Detroit  
Duesenberg Ride  
and Starter \$85 extra

**Ford**  
THE UNIVERSAL CAR

You can buy any model by making a small down-payment and arranging easy terms for the balance. Or you can buy on the Ford Weekly Purchase Plan. The Ford dealer in your neighborhood will gladly explain both plans in detail.

Order Now!



IT'S "HIGH TIME" TO BE ORDERING THAT—

**COAL!**

Summer's slipping along. The mercury will soon start down the thermometer tube again. Are you folks aware of it?

Then—let this be a friendly reminder that it's "high time" to be filling your Coal bins. A phone call—Birmingham No. 1—will bring you the best grade of Coal at a low price. Quick delivery. Better ring us—NOW!

R. C. Moulthrop Lumber Co.

## An Entirely New Degree of Riding Comfort



The Brougham

Chrysler engineers have added the last degree of riding comfort by the adoption, after exhaustive tests with tire makers, of special six-ply, high-speed, balloon tires which wear as long as ordinary cord tires and still have all the resilience of balloon tires. These who, in amazement, have been carried in comfort by the Chrysler over rutted roads of cobble streets at speeds up to 60 miles, will now find Chrysler riding ease still further increased.

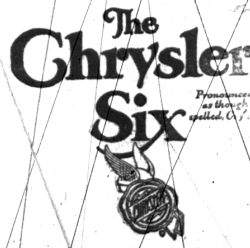
Our own experience proves to us—as yours will prove to you—that no car, whatever its weight or size, equals the Chrysler Six in buoyant, restful riding.

The special spring suspension, plus perfect balance, plus complete absence of any period of vibration, plus special six-ply, high-speed balloon tires, accounts for the greater safety and better riding which the Chrysler Six provides for its passengers.

This sensation has been aptly compared to the smooth skimming over the water of a sailboat. The Chrysler Six seems actually to level out its own path over road inequalities.

We are pleased to extend the convenience of time-payment. Ask Chrysler's attractive plan. Dealers Everywhere

The Touring, \$1395 The Phaeton, \$1495  
The Roadster, 1625 The Sedan, 1725  
The Brougham, 1895 The Imperial, 1995  
All prices f. o. b. Detroit, tax extra.



**Wurster & Stapleton**  
LOCAL DEALERS  
129 W. MAPLE PHONE 674