

Eco City News

Expression of Thanks. Mr. and Mrs. James Filby, of Emmons avenue, wish to express their thanks to the Leinback Humphrey Company for the appreciation and praise of their home and property.

People Asked to Dig Pits. Several people have complained that their neighbors have been in the habit of throwing refuse and garbage uncovered and unburied in their back yards. This habit breeds flies and

is of course very unhealthful, not only for the transgressors themselves but for their neighbors. It is a very simple matter to bury this rubbish and a great deal of sickness may be saved by complying with the wishes of those who realize it.

Fried Chicken Dinner Party. Saturday night, Mr. and Mrs. G. Laughlin, of Bird avenue, are giving a dinner party in honor of Mrs. Laughlin's sister, Mrs. Ivan Winslow, of Chicago. There are forty guests invited, all of whom are from De-

Interest to Motorists

WILL BE PUBLICLY MARRIED AT CARNIVAL THURSDAY NIGHT



James Snowden of Redford, and Beatrice M. Dobson of Detroit, are the couple which will be united at a public marriage which will be held at the Odd Fellows' Carnival this Thursday evening. Snowden, who is 28 years old, has had five years' over-

seas service. Miss Dobson, 25 years old, lives at 2935 Trumbull avenue, Detroit. Her parents' home is in London, Ontario. The wedding ring for the couple will be donated by L. R. Mix's jewelry store.

"Pieces of Eight." This term was applied to the Spanish peso which has a value of eight cents. It here the figure eight, and was current in Spain, some other European countries, and in the Americas.

NEED SUPPLIED



Post-structural steel support in this section of Wilbur's the police department building you up, what?

SEES ENCLOSED CAR STANDARD

HUDSON-ESSEX DISTRIBUTOR SAYS BASIS WILL LOWER THE PRICE

"This closed car show is a mighty curious idea," said William Boughner, Boughner Bros. Garage, Hudson-Exsex distributor, Saturday. "It sort of carries the idea that the enclosed car is some special sort of automobile."

"It won't be long now before the regular run of cars will be enclosed ones, and probably we shall then have special open car shows to open the spring and summer season."

"Yes, I know that other men have said that the enclosed car is the automobile of the future. But we are just now coming to the period when there is something more than talk on the subject."

Nine Cars Out of Ten Closed. "The Hudson factory is now turning out Super-Sixes faster than ever before in its history and nine out of every ten of the number are enclosed car action."

"I feel safe in making this prediction: 'The general run of enclosed car manufacture will have to be completely overhauled, and body-builders will have to manufacture their products on a progressive assembly system, with the same economical principles involved as are now in universal practice in the making of the chassis. It is because Hudson-Exsex has made enclosed cars a volume production proposition that the staunch, durable coaches can be sold at almost an open car price."

RESPONSIBLE FOR BLOWOUTS

Difficulty Often May Be Traced Back for Months When Casing Received Hard Jolt.

It is not always easy to trace the cause of a blowout. The tire may have been kept carefully inflated at the proper figure, tread cuts filled and beads watched, yet the casing gives

More often than not difficulty of this kind must be traced back for months when the casing received a severe jolt, weakening the fabric structure and then, as time wears on, the entire casing becomes affected and blows out when least expected.

Or the Vikings' Brood. "Yes, I suppose the sun must be in my eye, for I see my grandfather was vice president of a marine insurance company—Harper's Magazine."

The Fast Runner. The antelope of the continent, says Nature Magazine, flees from the open plains, depending upon his eyes, his nose, and his swift legs for protection. These have failed him as the country has settled up. He cannot survive wire fences and modern firearms.

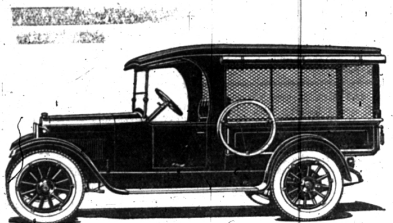
STOP HEAD-ACHES at the SOURCE. GET rid of body poison. Keep kidneys, bowels and liver active and healthy with the famous old standard... HORSE'S INDIAN ROADS FOR FEELS... 36 PILLS 25¢

Packard-Charlton Bldg. Co. 610 MCKERCHY BLDG. 2631 WOODWARD AVE. DETROIT Phone Cadillac Bldg. Frank B. Packard, Cecil F. Charlton

C. FLOYD SMITH PAINTING, DECORATING, PAPERHANGING 306-Oakland Ave. PHONE 604 Birmingham Mich.

HATS CLEANED Bring 'em in—I guarantee satisfaction on any kind and style. SHOES SHINED I'll make any lady or gentleman think their shoes are new—bring 'em, your feet and I'll prove it. Augustus Bakim 114 East Maple Ave. Birmingham

DODGE BROTHERS BUSINESS CAR



THE NEW MODELS of Dodge Brothers Business Cars—panel or screen type—are ideally suited to the needs of any business requiring delivery of loads from 500 to 1000 pounds weight.

Economy, speed, reliability, plus low first cost are features of these vehicles which every business man and farmer should consider in purchasing delivery equipment.

Delivered prices—Panel \$1028.68. Screen \$920.40.

EVANS-JACKSON MOTOR CO. Birmingham Michigan 119 S. Woodward - Phone 301

More NASH CARS in Birmingham all the Time LET US SHOW YOU WHY YOU WILL LIKE A NASH NASH New Four-Door Coupe Six Cylinders \$2090 f. o. b. Factory IT COSTS YOU NOTHING FOR A DEMONSTRATION AND IT COSTS LESS TO OPERATE WHEN YOU OWN ONE. Models range from \$915 to \$2190, f. o. b. factory BELL BROS. GARAGE LOCAL DISTRIBUTORS 122 East Maple Ave. Phone 709 Birmingham, Mich.

Value There's more of it in a Silvertown Cord than you will find in any other tire. Goodrich Silvertown Cord Tires Best in the Long Run EVANS-JACKSON MOTOR CO. 119 S. Woodward PHONE 301 Come in and get our money-saving proposition on Silvertown Cords.

ESSEX COACH \$1145 ALL CLOSED CAR COMFORTS "The Best Car I Ever Owned" Ask Any Essex Owner Owner after owner will tell you these things: Service of 50,000 to 100,000 miles with incredibly small expense. Thousands of miles and months of running without a tap of repairs. 15,000 to 25,000 miles on a set of tires. 18 to 23 miles on a gallon of gasoline. Quiet, smooth, continuous duty and absolute reliability, day after day for years. Few of the highest priced cars can show such records. Everyone knows how impossible to find like results among cars of the Essex price. "THE GREATEST OF ITS SIZE" SAY EUROPEAN EXPERTS "Absolutely the brightest, liveliest, little engine I ever found in an American Car." S. F. Edge in "The Autocar" of London, England. "A colossal revelation of the value Americans can offer at its price." E. N. D. in "The Autocar" of London, England. "Its transcendental record is not merely a record—it's a miracle." From "The Car" London, England. ALL CLOSED CAR COMFORTS AT OPEN CAR COST At open car cost the Coach combines all closed car comforts with the long-lasting reliability and performance of the famous Essex chassis. And except for the Coach, moderate-priced closed cars always mean low-priced chassis. In no other type of closed car—the Coach is alone in that distinction—you can get so much in closed car comfort and assured mechanical satisfaction within hundreds of dollars of its price. "My Next Car Another Essex" Say Thousands of Owners In an investigation conducted by a great national magazine, to determine what percentage of owners would get the same make of car, when they bought again, the Essex showed next to the highest percentage. Only one car, higher in price, and far longer on the market, excelled it in owner preference, by a margin so narrow as to be almost negligible. Come See Them Immediate Deliveries Boughner Bros. Garage Local Distributors 120 S. Woodward Ave. Birmingham, Mich. Phone 70