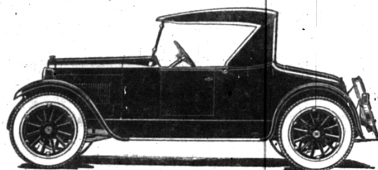


David C. Bliesath
Blacksmith and General
Woodworker
All Kinds of Wood Working
and Band-Sawing
Horse-Shoeing and
Repair Work a Specialty
208 FOREST ST.
8 and 10-In. CEMENT
BLOCKS For Sale
Smooth, Rock or Panel Face
Also Veneer Blocks
123 HIGH, ST.
Phone 241 - Birmingham

FORDSON TRACTOR—New, never used;
\$50 off. E. L. Benedict, 63 Pilgrim Ave.,
Highland Park. Tel. Hem 4069-W.



Dodge Brothers Roadster

New in beauty and comfort, but having all of the proved dependability and low operating cost that is the basis of Dodge Brothers popularity.

The latest roadster model is low, hangs on on the road and handles with utmost ease at any speed. In addition to the rear deck compartment, there is an ample carrying space back of the seat, similar to that in the Dodge Brothers Business Coupe.

Every feature of this new car contributes to the comfort and satisfaction of the owner. The price is \$887.30 delivered in Birmingham.

EVANS-JACKSON MOTOR CO.

119 SOUTH WOODWARD AVE.

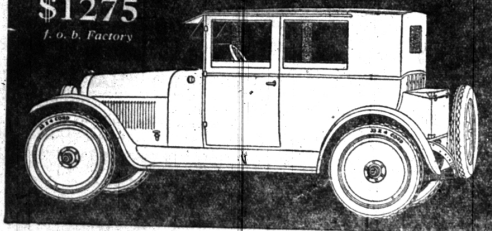
Phone 301

Birmingham

Michigan

NASH

Four Carriole
Five Passengers
\$1275
f. o. b. Factory



Five Disc Wheels and Nash Self-Mounting Carrier, \$25 additional

Ranks First by Comparison! Consider the superior merits of this Nash Carriole. Mark its smart, sweeping lines; its all-metal panel construction; its beautiful color combination. Note the luxury and the completeness of the car's equipment. Finally, take the wheel for a road trial. Feel the motor's smooth rush of power; its brisk getaway; its brilliant response. In every test, in every contrast, the Carriole will compel your admiration. And the price is set low. *Drive it—today!*

FOURS and SIXES

Models range from \$915 to \$2190, f. o. b. factory

BELL BROS. GARAGE

LOCAL DISTRIBUTORS

122 East Maple Ave.
Birmingham, Michigan

STATE BREAKS ROAD RECORDS

HIGHWAY BUILDING OPERATIONS EXCEED FIGURES OF ALL PRECEDING YEARS

With several weeks remaining in which to finish the work laid out for the year, road building operations for 1923 by the State of Michigan already have attained a record breaking total.

Of the 1923 total, 181.5 is pavement. Last year the pavement total was 130 miles, and widths averaged considerably less than those constructed this year.

Most encouraging is the fact that far more of the work than ever before was financed, during 1923, out of current revenues. Only \$2,000,000 in state bonds were issued, as against \$10,000,000 during 1922. A loan of \$3,000,000 was made the road of the state out of its surplus, and it is possible that this loan will never be called, as the state appears to be able to spare this sum without difficulty.

To many, the record-breaking amount of improved road built in Michigan during the year will create sensation approaching closely to amazement. Few had been expected freely last spring that the defeat of the gasoline tax would reduce road building to figures far below normal.

That the state was able to go ahead in its highway construction program—to make greater strides than have ever before accomplished—and could do it so largely out of normal, current income, is considered conclusive proof that further taxation of the motorist is not only unjust but is also unnecessary to the continued improvement and maintenance of Michigan highways.

NASH CO. EXPORTS JUMP 223 PER CENT

WELL-KNOWN MOTOR CAR NOW REPRESENTED ALL OVER THE WORLD

Nash Motors has gained 223 per cent in export shipments this year over 1922, according to information received from the factory by Norman Bell, of Bell Bros. Garage, local Nash Distributor. "With distributors and dealers in many cities on every continent of the globe, demand for the Nash product has increased each year until now the Nash name is almost as familiar a sight on the streets of Melbourne, Australia, as in Cleveland, O.," says the letter to Mr. Bell.

It is pointed out, in connection with the heavy gains in export shipments of Nash cars, that the overseas purchaser of an automobile is, of necessity, exacting in the matter of quality. This is true particularly in his choice of American-made cars, where the factory from 3,000 to 20,000 miles away from home.

In the outside cars are contained the six engines. The forward car is called the control car and, in addition to containing its engine, it is to the airship, what the bridge is to the battleship. It contains the lift controls, steering controls, telegraphs, radio, gyroscopic and magnetic compasses, etc. and is the point from which the ship will be steered, piloted and navigated in the air.

Special 12-volt Exide batteries are used to furnish current for engine ignition and running lights. These batteries in order to combine high capacity with light weight, have very thin plates, assembled in hard rubber containers. One battery is located in each of the six engine cars. For radio, where the demand for current may require 200 amperes or more for a few minutes, four Exide batteries of the same type as used for ignition and running lights are used in series-parallel on a 24 volt circuit. The series-parallel arrangement was adopted instead of using larger batteries, in order to insure absolute interchangeability of all batteries on the ship. The radio batteries are located, together with all the radio equipments, in the control car. All the batteries receive their charges from a generator system in much the same manner as an automobile starting and lighting battery receives its charge.

The huge building in which the Shenandoah is being constructed is approximately \$2,000,000. It is 962 feet long 318 feet wide and 200 feet high. The clear door opening is 238 feet wide.

It is understood that the ship will probably make a flight to the North Pole, sometime this fall, or next spring. Such a trip would require about five days.

The ZR-3, being built in Germany for the United States Navy will probably be completed this fall, and on arrival in the United States will be placed in the same hangar with the Shenandoah.

FORD CO. NOW HAS 9,448 DEALERS

WORLD'S LARGEST RETAIL SALES ORGANIZATION EVER KNOWN

Extension of the Ford Motor Company's sales and service organization during the year has been rather remarkable and is due, of course, to the continually increasing demand for Ford products. There have been 432 new dealers appointed since January 1, bringing the total number of authorized dealers in the United States up to 9,448, the greatest retail sales organization ever known. Authorized service stations also have been steadily increased in order to afford the best possible service to the constantly growing number of

"Nash distributors in countries abroad, as in America, have been selected with utmost care," said Mr. Bell, "and in every instance they are in a position to render service to the buyer in a measure fully equal to that of the dealer. Their interest in Nash performance is as great as our own interest in Nash service to our patrons."

AIRSHIPS MAY FLY TO NORTH POLE IN SPRING

Giant Dirigible, the Shenandoah, Could Make Trip In Five Days

IS 680 FEET IN LENGTH

Without doubt, the advent of the Shenandoah (Zik-1) heralds the creation of a new field for those of the younger generation who find the ordinary pursuits of life a trifle too tame for their roving tendencies. If the position of radio operator on an ocean liner seems fascinating to the imaginative youth, what will the post of radio operator on the huge dirigible of the future be to the boys of tomorrow?

Take for instance the Shenandoah that giant dirigible, a fitting acquisition of the United States Navy. Many of the residents of our eastern cities have seen this tremendous vehicle of the air. Most of us have only read about it. But a few facts may prove interesting.

It was built at Lakehurst, N. J. by the U. S. Navy, many of the parts being made at the Naval Aircraft Factory, at Philadelphia.

It is 680 feet long, 78 feet in diameter and from the bottom of its cars to the top of the bag, it is 96 feet. It is powered by six 300-horsepower specially built Packard motors (1800 h. p. in all) which, it is estimated will give the huge craft a speed of 70 miles an hour. Its 8,000 gallons of fuel is carried in tanks placed along a center keel compartment. The cruising range is over 4,000 miles.

Instead of hydrogen, which has been used as the supporting gas for dirigibles and all other lighter-than-aircraft for many years past, a new and very valuable gas known as helium has been used to inflate the Shenandoah.

Helium gas is found as 1 to 3 per cent of certain natural gases found in the Texas and Kansas oil fields. As explained by officials of the flying field at Lakehurst the United States has practically a world's monopoly on this valuable gas. 2,100,000 cubic feet of which are needed to fill the bag of the Shenandoah. Though nearly as buoyant, it has none of the explosive qualities of the hydrogen.

Contrary to the general belief that the gas is contained solely under the outer covering, it is enclosed in twenty gas cells within. The sole purpose of the outer covering is to give the ship stream-lines, to reduce the effect of the sun's rays on interior gas cells and to keep out rain and snow.

The metal framework is made of duralumin, a metal compound of aluminum, copper and manganese. It is as strong as mild steel, weighs only one-third as much, but its cost is about fifty times greater.

In the outside cars are contained the six engines. The forward car is called the control car and, in addition to containing its engine, it is to the airship, what the bridge is to the battleship. It contains the lift controls, steering controls, telegraphs, radio, gyroscopic and magnetic compasses, etc. and is the point from which the ship will be steered, piloted and navigated in the air.

Special 12-volt Exide batteries are used to furnish current for engine ignition and running lights. These batteries in order to combine high capacity with light weight, have very thin plates, assembled in hard rubber containers. One battery is located in each of the six engine cars.

For radio, where the demand for current may require 200 amperes or more for a few minutes, four Exide batteries of the same type as used for ignition and running lights are used in series-parallel on a 24 volt circuit. The series-parallel arrangement was adopted instead of using larger batteries, in order to insure absolute interchangeability of all batteries on the ship. The radio batteries are located, together with all the radio equipments, in the control car. All the batteries receive their charges from a generator system in much the same manner as an automobile starting and lighting battery receives its charge.

FORD CO. NOW HAS 9,448 DEALERS

WORLD'S LARGEST RETAIL SALES ORGANIZATION EVER KNOWN

Extension of the Ford Motor Company's sales and service organization during the year has been rather remarkable and is due, of course, to the continually increasing demand for Ford products. There have been 432 new dealers appointed since January 1, bringing the total number of authorized dealers in the United States up to 9,448, the greatest retail sales organization ever known. Authorized service stations also have been steadily increased in order to afford the best possible service to the constantly growing number of

NEW Overland \$695 CHAMPION

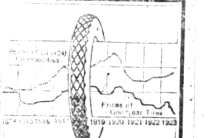
Ford owners. At present the Ford service stations total almost 22,000. In foreign countries there are 8,500 authorized Ford dealers and 7,000 service stations.

Telephone your Classified Ads to the Eccentric before Wednesday noon of each week. The number is 11 or 12. adv2047

LUDEN'S
MENTHOL COUGH DROPS
for nose and throat
Give Quick Relief

The finest Xmas gifts any woman could give—
or hope to receive are
Fuller Brushes: Hair brush, Flesh brush, Manicure brush, Clothes brush, or any one of the many
Fuller Brushes
for either personal or household uses—many as you want or as few as you want, and put up in attractive holly boxes
in sets for Christmas
Write or phone any day and we will send you a set.
H. O. WHITE
111 Hudson St.
Royal Oak, Mich. Phone 1021

THE extremely fair prices asked for Goodyear Tires year in and year out are shown in the chart above. Goodyear Tires are selling today for 45% less than in 1920; 39% less than in 1914. Despite this their quality was never so high as now. This is a good time to buy Goodyears.



As Goodyear Service Station dealers on call and recommended by the Goodyear Sales and Service Department, we have the best of all Goodyear tires and standard Goodyear service.

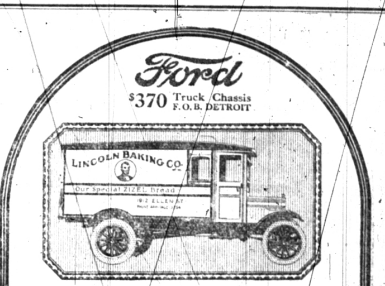
F. E. STERNAL
East Maple Ave.
GOOD YEAR



America's Most Sensational Car

The new Overland Champion is the big hit of the year! Delivers more kinds of service than any other car ever made. A wonderful closed car for the whole family. Big square space by taking out rear seat and upholstery—carries samples, luggage—anything! Great for salesmen, farmers—everybody! Seats and upholstery make big bed in car—fine for camping! Seats adjustable—fit anybody. The whole Country is going wild over the Champion! Come see it.

BOUGHNER BROS. GARAGE
S. Woodward Ave. Phone 70
Birmingham, Mich.



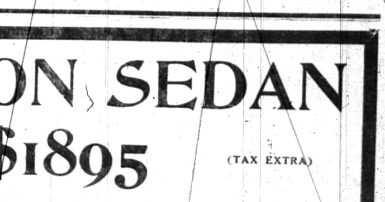
Ford Trucks Are Bought On Performance Records

If you were to ask a hundred or a thousand Ford truck owners why they use Ford trucks, in preference to all others, they would likely say, "Because the Ford stands up!" They know that under the endless grind of daily service the Ford stands up. They know that under the endless grind of daily service the Ford stands up. They know that under the endless grind of daily service the Ford stands up.

Ford Trucks can be bought through the Ford Weekly Purchase Plan.

CONANT - OSBORNE COMPANY

South Woodward Ave. Phone 16
"Authorized Ford Dealers" Birmingham, Mich.



HUDSON SEDAN \$1895 (TAX EXTRA)

ALUMINUM BODY BY A FAMOUS BUILDER

The Hudson Sedan gives custom-built quality with a price advantage of hundreds of dollars over cars of comparable fineness and chassis excellence.

MORE THAN 70,000 COACHES ARE IN SERVICE

At practically open car cost, the Coach combines all closed car comforts with famous chassis quality. Increasing thousands find it meets every need, at a big saving in cost.

LET US DEMONSTRATE TO YOUR SATISFACTION THE HUDSON OR ESSEX

BOUGHNER BROS. GARAGE

Local Distributors
120 S. WOODWARD AVE. Phone 70 Birmingham, Mich.