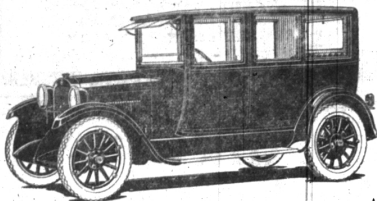


American Kerosene is smokeless, sootless, and odorless, the cleanest oil for heat, light or power. You'll note a difference when you use it. Frank Moon, Agent. Bell 261-R. adv30



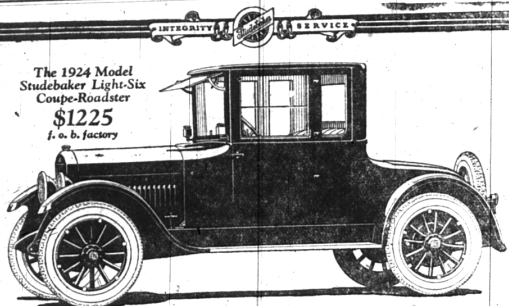
DODGE BROTHERS BUSINESS SEDAN

ALL-STEEL BODY, baked enamel finish, upholstered in Spanish blue leather, washable and removable. Loading space of 62 cubic feet behind front seat. A handsome closed car that is built for real utility. The 55-inch underslung rear springs give riding comfort unexcelled by much larger cars.

EVANS-JACKSON MOTOR CO.
119 SOUTH WOODWARD AVE.
Phone 301

Birmingham

Michigan



The 1924 Model
Studebaker Light-Six
Coupe-Roadster
\$1225
f. o. b. factory

The 1924 Model Studebaker Light-Six closed cars are quality cars.

They are built to endure—to give lasting satisfaction.

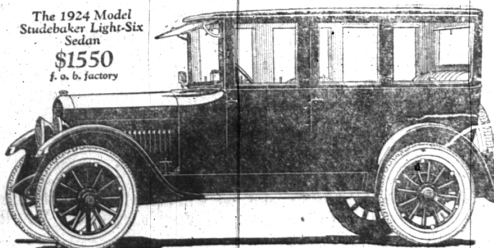
Both body and chassis are produced in Studebaker plants where painstaking craftsmanship has always been the rule—and the practice.

By manufacturing complete motors, transmissions, axles, frames, bodies, tops, castings, forgings, and stampings, parts-makers' profits are eliminated from costs, and one profit only is included in Studebaker prices.

Phone or call for demonstration.

Terms to Meet Your Convenience

The 1924 Model
Studebaker Light-Six
Sedan
\$1550
f. o. b. factory



CRAIG-WURSTER-STAPLETON

STUDEBAKER SALES AND SERVICE

207-209 S. Woodward Phone 674

THIS IS A STUDEBAKER YEAR

Int'l Motorists

Ford Still Breaking Production Records

Under the constantly growing demand for Ford products, domestic assembly plants of the Ford Motor Company, working at capacity in order to meet the increasing requirements, established a new production record for the week ending Tuesday, Oct. 30, the Ford News announced.

Daily output during the six-day period averaged in excess of 7,000 and brought a total of 42,271 cars and trucks for the week, exceeding by 502 the previous high mark set up during the week ending September 25. The lowest day's production of the last week was 6,590 and the highest, 7,221.

The present record-breaking production of the Ford Motor Company is of special significance, continuing as it does through this period of the year when winter months are at hand and when car deliveries as a rule begin to show declines. It reflects a generally prosperous condition in the country in which Ford products seem to be enjoying a large share.

The Fordson tractor plant turned out 1,846 tractors during the week. At the Lincoln division of the company production moved up to a new record for the week ending Tuesday with an output of 223 cars, six more than the previous week with its record of 217.

Michigan Keeps Pace With National Sales

With factory reports showing October sales and deliveries to have been greater than during the same month in any former year, Nash business in Detroit and Lower Michigan has kept well ahead of the majority of the country, according to Walter Judd, president of the Miller-Judd Co., Nash distributors for Detroit. Reports from Kenosha are to the effect that business during the current month is keeping up at the same rate with indications that November will be far and away ahead of the same month in former years from the standpoint of sales, a condition that is creating much surprise in the industry.

"While we naturally are highly pleased with the conditions existing at the factory, our own records are doubly gratifying," said Mr. Judd. "Sales reports from every section of the country indicate that we are maintaining our position in fourth place in the list of the larger cities, having climbed to that eminence a few months after the Miller-Judd Co. took over the Nash franchise in Detroit, about a year ago. We have hovered around fourth and fifth place nearly all year though reports for a majority of the months show us to be in fourth place."

"E. H. McCarty, general sales manager at the Nash factory, in a letter declares this to be the biggest year Nash ever experienced. Approximately 52,000 Nash cars were shipped between Jan. 1 and Oct. 11 and November business is expected to run at a corresponding pace. We are confident the business in Michigan between now and the opening of the national shows in January will be equally as gratifying as the volume enjoyed during the past 10 months. Honest and outstanding values, with prices as low as is consistent with good business alone are responsible for that success."

THE VALLEY OF EASE

My friend, have you heard of the Town of Yawn.

On the banks of the River Slow, Where blossoms the Wait-a-While flower fair.

Where the Some-Time-or-Other agents the air And the Soft-Go-Easies grow.

It lies in the Valley of What's-the-Use.

In the Province of Let-Her-Slide, That Old-Tired-Feeling is native there.

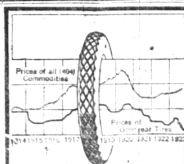
It's the home of the listless I-Don't-Care Where the lazy Put-Offs abide.

The Put-Offs smile when asked to work.

And say "We'll do it tomorrow." And so they delay from day to day.

While another takes all the cream away.

Till as failures they awake to their sorrow.



THIS little chart shows that for years Goodyear Tire prices have been kept below the average price level of all commodities. Goodyear Tires today cost 39% less than they did in 1914. And they are the best tires Goodyear ever made. This is a good time to buy Goodyears.

At Goodyear Service Station Dealers we sell and recommend the new Goodyear Cords with the bonded All-Weather Tread and back them up with standard Goodyear Service.

F. E. STERNAL
East Maple Ave.

GOODYEAR

No Job of Printing Too Large—None Too Small.

OUR WAGONS
ARE IN BIRMINGHAM

Tuesday, Thursday
and Saturday

Efficient laundry service—the kind that makes you smile with satisfaction.

Everything back but the dirt.

The Pontiac Laundry Co.

The Soft Water Laundry

30-32-34 Patterson Street

PHONE PONTIAC 347 or 1200

C. FLOYD SMITH

PAINTING,
DECORATING
PAPERHANGING

306 Oakland Ave.
PHONE 604

Birmingham Mich.

David C. Bliesath
Blacksmith and General
Woodworker

All kinds of Wood Working
and Band-Sawing

Horse-Shoeing and
Repair Work a Specialty

208 FOREST ST.

8 and 10-In. CEMENT
BLOCKS For Sale

Smooth, Rock or Panel Face
Also Veneer Blocks

123 HIGH ST.

Phone 241 Birmingham

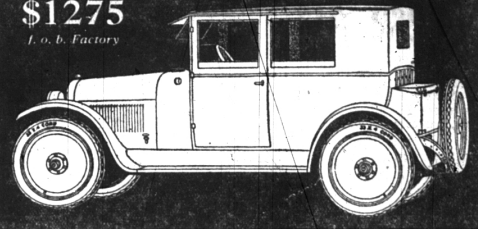
NASH

Four Carriole

Five Passengers

\$1275

f. o. b. Factory



Five Disc Wheels and Nash Self-Mounting Carrier, \$25 additional

Ranks First by Comparison! Consider the superior merits of this Nash Carriole. Mark its smart, sweeping lines; its all-metal panel construction; its beautiful color combination. Note the luxury and the completeness of the car's equipment. Finally, take the wheel for a road trial. Feel the motor's smooth rush of power; its brisk getaway; its brilliant response. In every test, in every contrast, the Carriole will compel your admiration. And the price is set low. *Drive it—today!*

FOURS and SIXES

Models range from \$915 to \$2190, f. o. b. factory

BELL BROS. GARAGE

LOCAL DISTRIBUTORS

122 East Maple Ave.

Birmingham, Michigan

Phone 709

HUDSON

Sedan \$1895

Standard and Top Extra

On the Finest Super-Six Chassis Ever Built

Heretofore a moderate-priced closed car has meant an inferior chassis. Now at a saving of hundreds of dollars you buy in HUDSON a car of positive reliability, chassis excellence and finest performance.

**More than 70,000
Coaches in Service**

At practically open car cost, the Coach combines all closed car comforts with famous chassis quality. Increasing thousands find it meets every need, at a big saving in cost.

Super-Six Prices at the Lowest Level in History

HUDSON

Coach \$1375

BOUGHNER BROS. GARAGE

S. Woodward Ave.

Birmingham, Mich.

Phone 70

Freight and
Tax Extra