

CHRISTMAS COAL CHEAP

Fortunate Purchases Enable Us To Offer You
Good 2 x 4 EGG COAL in Two Ton Lots
 AT

\$8.00 per ton delivered; \$7 at yard

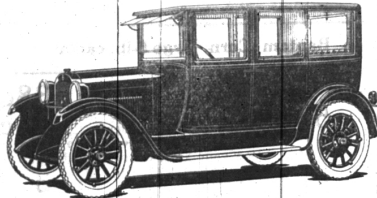
Owing to over-production many mines are closing down—
 What is their loss is your gain. We carry in stock:

**POCAHONTAS EGG, NUT
 EGG COKE HARD COAL
 SOFT LUMP**

Phone 175-R

Parks Coal Company

IF WE DO IT, IT WILL BE "GOOD PRINTING."



DODGE BROTHERS BUSINESS SEDAN

ALL-STEEL BODY, baked enamel finish, upholstered in Spanish blue leather, washable and removable. Loading space of 62 cubic feet behind front seat. A handsome closed car that is built for real utility. The 55-inch underslung rear springs give riding comfort unexcelled by much larger cars.

EVANS-JACKSON MOTOR CO.
 119 SOUTH WOODWARD AVE.
 Phone 301

Birmingham Michigan

of Interest to Motorists

FIRESTONE SAYS FUTURE IS BRIGHT

**TIRE MANUFACTURER PREDICTS
 UPWARD TREND FOR
 COMING YEAR**

A steady upward trend in business generally and more stable prosperity for the rubber industry particularly during the coming year were predictions made by Mr. Harvey S. Firestone in a speech here today before 5,000 employees and other stockholders at the Annual Meeting of the Firestone Tire & Rubber Company, of which he is founder and President. In support of his statement Mr. Firestone pointed to the remarkable progress made during the past year by his own company, which showed sales of \$77,851,108, an increase of 20% over the previous year, returning a net profit of \$9,104,902 after providing for depreciation, taxes, interest and other charges. After paying preferred dividends and all other charges the common stock equity increased over \$13 per share.

AUTO CLUB ISSUES CAUTION WARNING

**MOTORISTS ADVISED TO DRIVE
 CAREFULLY ON WOODWARD
 BEYOND BIRMINGHAM**

Due to grading work that has been in progress for several weeks on the Woodward avenue road between Birmingham and Pontiac, motorists are warned by the Detroit Automobile club to drive cautiously over that section of the highway. The trucks hauling dirt away from the points where cuts have been made in the hills have dropped a great deal, much of it clay, onto the road surface. Soft weather has turned this to a greasy consistency that makes safe driving a difficult task. Sudden application to breaks on this section may at any time cause a disastrous skid. Motorists are especially cautioned not to drive at speed on the inclines. Grading is going on rapidly on the Woodward widening project and it is likely that the present condition will continue to exist as long as the highway is open to traffic, officials of the automobile club state.

Ford Co. Opens New Plant in Denmark

**WILL BE SECOND LARGEST IN
 EUROPE; AMOUNT INVESTED
 IS \$650,000.00**

By next spring the Ford Motor Company will have completed an immense new factory at Copenhagen.

Denmark, which will be one of the finest in Europe, introducing in that part of the world new standards in design and operation.

The growth of the Copenhagen assembly plant since its opening in June 1919, has been remarkable and it is now the second largest foreign among the foreign companies, first place being held by the plant at Manchester, England.

A total of thirteen countries are served by Copenhagen. These include Denmark, Iceland, Faroe Islands, Sweden, Norway, Finland, Estonia, Latvia, Poland, Ukraine and Germany.

The demand for Ford cars during the present year has been particularly good in the three Scandinavian countries, Denmark, Norway and Sweden, and the Fordson Tractor has come into extensive agricultural use.

Construction work on the new plant at Copenhagen is well underway. The site, covering four and a half acres, is admirably situated on the south harbor of Copenhagen. The building is being erected so that material from the Manchester plant and from Detroit, via New York. Railroad service will be direct to the property.

The new building is 400 feet long by 300 feet wide. The outer section is two stories high with an inner court of one story with daylight roof. All stock will be moved on conveyors. The second floor will be devoted to an exclusive body-making factory. The chassis assembly line, which will be on the same continuous production system as that employed in all American plants of the company, will be on the first floor.

A large power plant adjoins the main building. The new plant and property represents an investment of more than \$650,000.

FROM THE ECCENTRIC COLUMNS

Forty-Three Years Ago.
 Jule Rundle says he would like to have a party this season, but will have to postpone it, because he can't afford to have a party and buy a farm the same year. Well, we can wait.

A few photographs of the Birmingham school with the scholars attached, cheap. Inquire of Mitchell at Hagerman's and he will explain.

We are indebted to Mrs. E. A. Warner, who is visiting in New York state, for several copies of New York Tom.

Tom Adams was bound to dance the Varsouviana and Jim Beattie the

Quadruped, at the social hop last week. Tom can explain, eh, Jim?

At the regular meeting of the Birmingham Lodge No. 44, F. & A. M., the following officers were elected: W. M., E. W. Reynolds; S. W., Wm. Brown; J. W., M. A. Randall; Treasurer, John Bodner; Sec'y, Eugene Brooks; S. D., James M. Hunt; J. D., Walker North; Steward, Ira J. Chatfield and Hiram Daniels; Tyler, Samuel Jarvis.

Edison's Electric light is being introduced in New York City. Edison lamps are now being made at the rate of 100 per day; they last six months and cost 25¢ each. The company proposes to give light to consumers at the rate of \$1.50 to \$1.75 per 1000 feet.

It is announced that Mrs. E. S. Custer, mother of the late Gen. G. A. Custer, is lying at the point of death in her home in Monroe.

has never recovered from the shock of the death of the great cavalryman and her other son.

Twenty-Five Years Ago.
 Doesn't Birmingham give enough patronage to the Electric Road to entitle it to a waiting room?

The Exchange Bank will be closed next Monday, December 28th, as this is a legal holiday, Christmas coming on Sunday this year. Paste this in your hat and you won't see the sign staring you in the face, "Closed, Legal Holiday."

George H. Mitchell,
 Editor of the Birmingham Eccentric,
 Dear Sir:

Please send me a snowball. It is better down here than any place I ever heard them talk about. Send it soon.
 Yours truly,
 Wm J. Baker,
 19th Inf. Co. G.
 Force, Porto Rico.

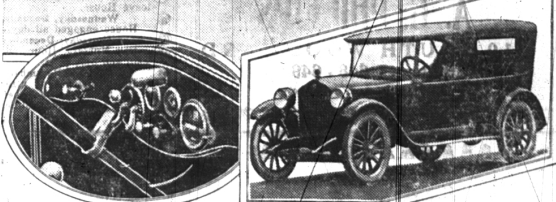
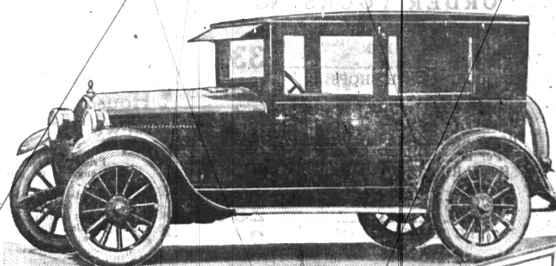
November 10, 1898.
 Saw Bro. Parker, with whom we could send you a basket of turkey and cranberry sauce to divide with John Wolff and Luman Hood. Have's luck and best wishes to the boys in blue in Porto Rico.

Miss Flora Keyes returned from Ludington Saturday to spend the Christmas holidays at home.

Miss Adele M. Snow, our village artist in china painting, had an exhibit in a Detroit Church last week. She had a booth at the church of Our Father. Miss Snow does a fine lucrative business in her line for with her skill, when she makes a dish, to see it to cover.

Mrs. Lester W. Mix, of Brown street and her father, John Flaling, returned from Flint Tuesday, where they had been for several days. They attended the funeral of Mr. Flaling's brother, E. V. Flaling, 73 years of age, who was run over and killed by an automobile in Flint the previous Sunday.

Lyle Marguerite Kamin, daughter of Mr. and Mrs. C. E. Kamin, of Vinewood avenue, spent the past weekend with Mrs. F. Stone, of Pontiac, formerly of Vinewood Ave., Birmingham.



Six-Cylinder Closed Car for Less Than \$1,000

Above: The new Essex Coach. Below at the left is the open car front compartment, and at the right the open car.

The New ESSEX A SIX

Built by Hudson under Hudson Patents

Essex closed car comforts now cost \$170 less than ever before. Also with this lower price you get an even more attractive Coach body and a six cylinder motor built on the principle of the famous Hudson Super-Six.

It continues Essex qualities of economy and reliability, known to 135,000 owners. It adds a smoothness of performance which heretofore was exclusively Hudson's. Both cars are alike in all details that count for long satisfactory service at small operating cost.

You will like the new Essex in the nimble ease of its operation. Gears shift quietly. Steering is like guiding a bicycle, and care of the car calls for little more than keeping it lubricated. That, for the most part, is done with an oil can.

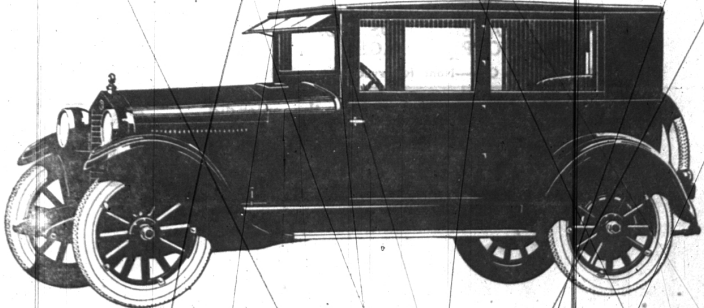
The chassis design lowers the center of gravity, giving greater comfort and safety, at all speeds, on all roads. You will be interested in seeing how this is accomplished.

Greater fuel economy is obtained. The car is lighter, longer and roomier. You will agree that from the standpoint of appearance, delightful performance, cost and reliability, the new Essex provides ideal transportation.

The
 Coach
 \$975

Touring Model - \$850
 Freight and Tax Extra

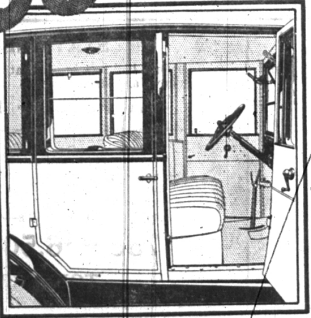
A 30 Minute Ride Will Win You



Fordlor Sedan
\$685



F. O. B. Detroit



-for Christmas

IT IS not at all surprising that the new Fordlor Sedan is proving extremely popular as a Christmas gift. For this handsome closed type body is a truly exceptional value at its present low price.

Important improvements in outward design and interior appointments have made it a much more attractive car—more gracefully proportioned, more richly furnished.

Notable among the changes introduced are a higher radiator, larger hood and cowl, water-tight windshield, more sturdy steering column, broadcloth upholstery, revolving type window regulators and bar type door handles.

Inspect this new Fordlor Sedan at your first opportunity and arrange for its delivery on Christmas morning.

It will be a pleasant surprise for every member of your family.

You can buy this car through the Ford Motor Purchase Plan

CONANT - OSBORNE COMPANY
 South Woodward Avenue
 Authorized Ford Dealers



BOUGHNER BROS. GARAGE

Local Distributors
 120 S. WOODWARD AVE. Phone 70 Birmingham, Mich.