

Much Interest Is Shown In Dodge Line

That a good deal of interest has been shown in the appointment of Evans-Jackson Motor Co. as local distributors for the Dodge Brothers Motor Co. is evidenced this week by the placing of several orders for immediate delivery, according to C. R. Evans, general manager of the Evans-Jackson Motor Co. A large sign will be erected on the front of the building and other things will be done to advertise the garage service.

BUICK MAKES CLAIM OF PERFECTION IN ITS 4-WHEEL BRAKE

The conviction that the technical development of four-wheel brakes has reached a point where it is wise to place such equipment in the hands of the average consumer has been newly reached by a few manufacturers. Buick's position in the front ranks of producers therefore makes it a most conspicuous member of this still limited aggregation. Buick four-wheel brakes are destined to loom very large in the public eye. According to the Buick, the system they have finally adopted is backed by 150,000 miles of road test.

ward. All brakes are applied through the usual service pedal, which differs from previous construction only in the extent that it is slightly higher than the clutch pedal, and has a slightly longer throw. The universal mechanism by which these brakes are applied is such as to permit the outside wheel to be released when rounding a corner, while the inside wheel is braked more strongly.

Increased Demand For Hudson - Essex

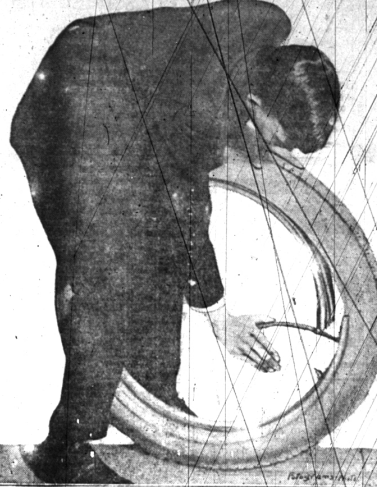
"There is a distinct trend toward standardization and simplification in the automobile industry, coming in response to a demand by the motoring public which has come to regard the motor car as a matter of daily necessity, according to Boughner Brothers, local Hudson-Essex dealers. "The Hudson and Essex factories have been running at capacity for many months and are still unable to fully supply the increasing demand," said Mr. William Boughner, "Hudson-Essex production set at 100,000 for 1923 consists largely of closed cars, the Hudson proportion of closed cars being 80 per cent as compared with a general average of 30 per cent. Hudson and Essex are standardizing on the coach, and they are able to offer a value and a price which assures volume business.

STRIPPED GEARS CAN BE AVOIDED

No Novelty to Hear Grinding When Careless Driver Starts His Engine.

(By ERWIN GREER, President of Great Clubs of Automobile Drivers, Chicago.) There is nothing more exasperating to the motorist than that horrible sound which tells a story of stripped gears. It is not in the permanent mesh gears, where shaft motion is turned into axle motion that the trouble comes. If the rear axle gears are properly set and packed, they should never make any trouble. But it is in the shifting gears of the transmission, where gears come into mesh at varying rates of speed and with the number of revolutions per minute and several other things, to complicate the situation, that there is wear and tear. It would not be so bad if there were only wear. The tear is what really hurts.

CAN CHANGE TIRE IN ONE MINUTE



As a result of the increasing consumption of time, and general inconvenience which the motorist suffers when a change of tires becomes necessary, inventive genius has frequently been directed toward the elimination of tire changing troubles. A new device called the Lever-Lock, is applicable to any type of standard tire and permits of a tire change in the speedy time of one minute. It is simple to operate and effective.

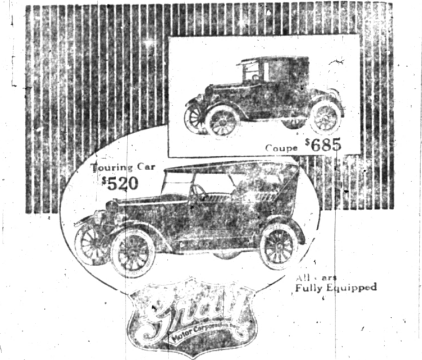
SPECIAL TAX ASSESSMENTS ON SEWERS WILL BE LEVIED SOON

Special assessment lists to defray the expenses on the Henrietta street sewer and the Watkins and Argus street sewers have been completed and ratified by the Commission and the Village Clerk has been instructed to certify the assessments to the Village Treasurer for collection. This action was taken by the Commission after a hearing was held at which time there were no objections. The Henrietta street sewer will begin at the intersection of Henrietta and Frank streets, and extend north on Henrietta street a distance of 915 feet at an estimated cost of \$120,000. The Watkins and Argus street sewer will begin at the intersection of Watkins and Wallace streets, and extend north on Watkins street a distance of 1200 feet, and at the intersection of Watkins and Argus streets a distance of 350 feet, at an estimated cost of \$40,000. One-third of the cost of the installation of each sewer will be paid for by the Village.

James Curry of Sandusky, who is the guest of Mr. and Mrs. Albert Mudge of North Woodward avenue, Sunday.

Mr. and Mrs. Albert Mudge of North Woodward avenue, are making an extended visit at Nayagan Lake.

Motor Trip
Before making your next motor trip, read it!
It is now an indispensable motorist.
The August issue of the Motorist.
AT CORNERS DON'T TURN OVER



Judge the Gray by the satisfaction it is yielding thousands of owners today. Their testimony is a dependable performance, freedom from service troubles and increased mileage from gasoline is convincing tribute to the high quality of this light car. Come in today and learn why the Gray has delighted them all.

Bell Bros. Garage
Local Distributors
122 EAST MAPLE AVE.
Phone 709
Save 3 the Gas

To the already large number of books in the Baldwin Public Library have been added ten more during the past week, the first eight of which are fiction which have a wide range of appeal. The newly acquired books are: "The Alaskan" by James Oliver; "The Emperor's Old Clothes" by Frank Heller; "Faint Perfume" by Zona Gale; "House of Merrivale" by Archibald Marshall; "Lonely Furrows" by Mrs. Maude Diver; "Mine With the Iron Door" by Harold Bell Wright; "Queen of the World" by George Weston; "Fiction" ("These United States") by Ernest Gruening; "A Woman Terdentoff in Europe" by Grace Thompson.

When the car is standing the engine running in neutral and no gear on the transmission shaft is engaged. To start, it is customary to disconnect the engine by disengaging the clutch, and to move the lever so that the gears that give the slowest speed will engage. Once the car is under way and it is desired to increase the speed, the lever is shoved forward, moving the transmission gears forward until the gears that give second speed are engaged.

THREE GARAGES IN COUNTY ROBBED LAST SATURDAY
A Buick coupe and \$237 in cash were taken by burglars who entered garages at Royal Oak, Oxford and Rochester Saturday night last. The coupe belonged to an Oxford physician.

HOW TO ESCAPE MUD SPLASH
Most Drivers Make Mistake of Getting as Far Away From Passing Car as is Possible.
When trying to avoid getting splashed with mud most drivers will go as far away from a passing car as possible. This is just the reverse of what one ought to do to avoid such splashing. When the cars are ten feet apart, any mud that is splashed will strike the body of the other car whereas, if the machines are closer together, a drive that is splashed will only strike the fenders and the under sides of the hood.

EVOLUTION OF STEAM ENGINE SHOWN BY MODELS ON "SERVICE-PROGRESS SPECIAL"



The "Service-Progress Special", of the New York Central line, which is a transportation museum with the DeWitt Clinton train of 1831, engine 9009, the Warthen working engine model, several cars of railroad exhibits and moving pictures start on its trip through Ohio, New York, Pennsylvania, Indiana, Illinois and Michigan from Cleveland June 18th and arrived at Rochester at 8 o'clock this morning. It will be an exhibition at Rochester until noon, and will then go to Oxford, arriving at 1 o'clock and staying until 6 this evening. From 7 p.m. until 10 p.m. the special will be at Lagers, leaving there for tomorrow's schedule at Millington, Vassar and Cairo.

Rev. J. D. Hubbell of Detroit, and Rev. C. E. Benson of Detroit, were guests of Rev. and Mrs. C. M. Thompson of Ferndale avenue, Wednesday of this week.
Mrs. Ira Linton of Kingsley, Mich., Mrs. Annie Weir, of Theford, Ontario, Mrs. C. D. Hohi of Calumet, and B. A. Weir of Houghton, attended the funeral of Mrs. Jane Weir of Bates street, Wednesday.
Tuesday afternoon Miss Margaret Brown was hostess to her Sunday school class at the home of her parents, Mr. and Mrs. B. T. Brown, of North Woodward avenue. During the afternoon the children enjoyed games and other appropriate sports, after which a delicious luncheon was served.

Florence Kitchen of Frank street and Irene Marlow of George street visited friends in Cleveland, O., and Britton, Mich., also visiting Niagara Falls and Buffalo, during their vacation.

ITS slow yet good 1 year tires, for as little as \$7.95. Go only with a tire priced at \$12.00 per set, but now in its best time, because Goodrich tires are getting 30% less by 1924 prices, and their quality now is better than ever before.

F. E. STERNAL
East Maple Ave.
GOOD YEAR



1924 Models Are the Finest Big-Sixes Studebaker Ever Built
The enthusiasm with which the new 1924 model Studebaker cars have been received locally is an indication of the reason they have enjoyed throughout the country. No wonder. They are emphatic and compelling value Studebaker ever offered and the public knows that Studebaker has been a consistent leader, year after year, in the amount of intrinsic value per dollar invested.

Table with columns for car models and prices: Big-Six 5-Door Sedan \$2550, Big-Six 7-Door Sedan \$2750, Big-Six 2-Door Coupe \$2550.

THIS IS A STUDEBAKER YEAR
POWER COMPACT
GORDON ROGERSON OF THE STREET has enrolled at the Michigan State Automobile School, one of the best courses of automobile repair and mechanics, according to a card received from that institution.

The Coach is Popular

Count the ESSEX CARS in Birmingham. New Ones Each Week. And Every Owner of an ESSEX CAR is Auto-Satisfied. Because:

In this the Hudson or Essex Coach you get all-year comfort at open car cost—but you get more than that for both chassis are acknowledged to be among the finest in the world. And so in the Coach all the motor essentials are provided at a saving of hundreds of dollars over cars of comparable mechanical quality. With such a advantage, it is any wonder the Coach is in such demand.

BOUGHNER BROS. GARAGE
Local Distributors
120 S. Woodward Avenue
BIRMINGHAM, MICH. PHONE 70