



Simmons Bed,
Spring and
Mattress
complete

Genuine Simmons Bed, Spring and Mattress Outfits

Simmons beds cost no more than ordinary beds. The following offer demonstrates this fact in the most conclusive manner.

The Bedstead in this combination outfit is of round steel, tubing, very strongly made and very serviceable. It is an entirely satisfactory piece, made with the same care and exactitude as all Simmons Beds are made.

The Spring is the well-known Simmons galvanized, twisted-link fabric, long recognized as one of the most practical, serviceable and comfortable flat-surfaced bed springs on the market. It is a spring of unsurpassed sanitary quality. "Built for Sleep"—no sagging, no letting down; resilient and restful.

The Mattress is of pure, clean, new Cotton—not made of old, discarded "renovated" materials—as the price might indicate. Each mattress is sealed and delivered in the original canvas roll, protected from the dust, grime and germs of the city streets.

The outfit, as illustrated above, special at

Price complete \$19.00 Bed, spring
no extras. and mattress

C. Arnold

Furniture Company.

Oakland County's Largest and Finest Furniture Stores

— 2 STORES —

62-64 So. Saginaw St.,
Pontiac, Mich.

119 No. Woodward Ave.,
Birmingham, Mich.

SIMMONS BEDS

Built for Sleep

COMING EVENTS

Saturday, March 11, an Eastern Star bazaar will be held in the Schaeck & Son meat market on Woodward avenue.

Wednesday, March 15, the ladies of the First Presbyterian Church Society will entertain with a pot-luck supper at the church to be followed by the annual business meeting.

The American Legion of Birmingham will stage a motion picture show in the auditorium, March 13.

March 23, the Ladies' Aid Society of the M. E. Church will give a home talent play, "The Old-Fashioned Mother," in the Odd Fellows Temple.

March 13 is a Tom Thumb Wedding at the First Presbyterian church. It will be given by 20 youngsters under the auspices of the Ladies' Church Society of the church.

The members of the Birmingham branch of the American Insurance Union will hold a social meeting this evening, March 10, in the Odd Fellows hall over Chig's bakery.

The young people of Birmingham are invited to attend the masquerade party at Franklin hall on March 17, to be given under the auspices of the Franklin Auxiliary.

Friday, March 17, East Lansing girls came to Birmingham to play the local basketball team.

Tuesday, March 14, the W. B. A. of Birmingham will meet in Park's hall and it is hoped every member will be present as this is one of the important business meetings of the year.

Monday evening, March 13, the Birmingham branch of the Child Conservation League will meet at the High school in the Junior session room. This is to be an open meeting and local residents are urged to attend as Miss J. Eckenbrenner, of New York, Secretary of the National Membership Committee of the Child Labor Association, will speak.

March 17 the local branch of the American Association of University Women will meet at the high school at 2:30 o'clock for the Home Economics program which will be under the direction of Miss Loomis, domestic science instructor. This will be one of the interesting gatherings of the season for this organization.

MICHELIN CONTEST

Mr. F. S. Cornell, of East Maple avenue, local dealer for the Michelin Tire Company, is enthusiastic these days over the contest being conducted by the Michelin people for a suitable name for the "Michelin Man," the familiar figure used by them for advertising purposes, and represented by a number of tires, resembling the outline of a human being. Mr. Cornell will be glad to explain the details of this contest to anyone calling at his place of business.

Mrs. Earl Potter of Oakland avenue, has been ill for the past week and confined to her home, but is much improved.

Buy now. All overstock Cigars at less than cost. Cobb's. adv44

Optical Repair Work. MIX THE JEWELER. adv44

Voters Should Read This!

J. H. McBride and David Bell, successful local business men, have agreed to run for the offices of Village President and Commissioner, respectively.

They are aware of the needs of Birmingham and they have the ability to successfully meet them.

They both have their business interests in our Village, and can be found HERE 24 hours every day.

Neither of them are pledged to any party or method of Village management, other than those practices which will render the greatest service to the greatest number of people. We believe that they should receive the support of every voter in Birmingham.

The issue in this campaign is not "personality." We all respect Mr. Taylor, even though we do regret his affiliation with an organization, the founder of which, in a public meeting, said was founded entirely and built upon "personal spite."

This campaign is not being conducted by us on any "personal spite" platform. We honestly believe that Mr. McBride and Mr. Bell will give to the people of Birmingham the best administration that it has ever had.

VOTE FOR BOTH THESE MEN ON MARCH 13.

"McBride for President Club"

Leigh Lynch, President.

Harris A. Lamb, Sec.-Treas.

Charles J. Shain,

George Forrester,

T. W. Miner,

Neil Black,

James E. Valentine,

James W. Cobb,

George Blackmer.

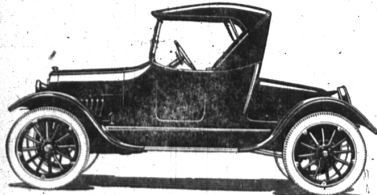
(Advertisement)

TOMORROW IS THE GREAT DAY!

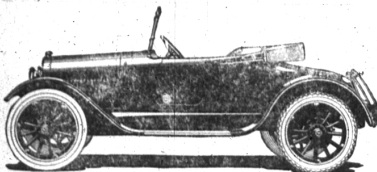
SATURDAY, MARCH 11

A GOOD CIGAR WILL BE GIVEN EVERY MAN WHO SEES.
OUR DISPLAY ON MARCH 11.

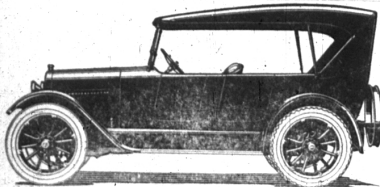
Many Styles To Choose From



SUPERIOR MODEL ROADSTER
Price \$525.00 f.o.b. Flint



MODEL "FB-12" ROADSTER
Price \$975.00 f.o.b. Flint



MODEL "FB-32" TOURING CAR
Price \$975.00 f.o.b. Flint



We are prepared right now to give delivery on any make of Chevrolet car.

Don't Fail To See This Wonderful Display Of



Automobiles. First Time Sold In Birmingham

Believing that the Chevrolet Automobiles are the last word in honest automobile achievement, we have taken on the agency for this wonderful car for Birmingham and vicinity.

On SATURDAY, MARCH 11, we shall throw our display rooms open to the public for their inspection. If you are contemplating a new car, don't fail to see the Chevrolet.

WE BELIEVE THAT THE CHEVROLET IS THE BEST LOW-PRICED CAR ON THE MARKET—NONE EXCEPTED.

Boughner Bros.

PHONE 70

128 S. WOODWARD AVE.

Birmingham - Michigan

NEW CHEVROLET REFINEMENTS

FRONT AXLE

- 1—Steering knuckles have been provided with large grease cups mounted on the side of the barrel. This insures positive lubrication to upper and lower bushings.
- 2—Hard rolled brass steering knuckle bushings reduce wear. They will not "rust up."
- 3—Steering knuckle king bolts have been made larger—from $\frac{1}{2}$ to $\frac{9}{16}$ inch diameter.
- 4—This gives larger bearing surface, insuring longer life and greater safety.
- 5—Steering plain arms have been redesigned, having a heavier section and made with a tapered shank where they attach to the steering knuckle. This increases the safety factor.

CLUTCH

- 1—Transmission supports are drilled in position on each motor and held firmly with heavy drive fit bolts and dowels securely locked. This insures positive alignment of clutch and transmission, preventing slipping or breaking of clutch cones.
- 2—The service brake has been removed from the clutch pedal, making it only function the operation of the clutch. This removes all the strain of the braking action from the clutch and insures positive engagement.

BRAKES

- 1—The service brake has been connected to the former emergency brake pedal. A longer lever has been placed on the axle, which increases the leverage, giving greater braking action.
- 2—The emergency brake has been connected to a hand lever mounted on brackets attached to the transmission case. The latch and sector are of heavy construction, insuring that the brake will remain "set" until released by hand.

REAR AXLE

- 1—Heavy spiral ring and pinion gears are used, eliminating breakage and insuring quiet running.
- 2—The pinion gear is provided with a hub which fits into a heavy duty annular bearing. This giving support to the gear at a point where it is most needed.
- 3—The length of the taper on the propeller shaft has been increased, insuring positive locking of pinion gear.
- 4—An improved propeller shaft thrust bearing is used to carry the driving thrust.

BODY

- 1—The front and rear seats have been lowered, making the backs of the seats longer.
- 2—A heavier body sill is used and the door post bracing improved.
- 3—The top has been lowered and supporting ribs moved forward, permitting the use of gypsy side curtains.
- 4—The steering gear has been lowered two inches, giving easier control.
- 5—Spring snap hook fasteners are now used on all models.

SPRINGS

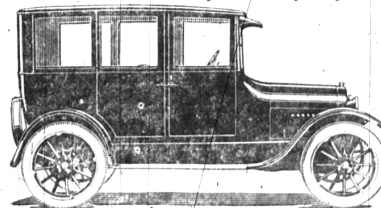
- 1—The front and rear springs have been regraded to give easier riding.
- 2—New and improved methods of assembly have been devised, which insure positive inspection of all assembly operations.

We carry a complete line of Genuine Ford Parts. We are ready to stand back of every car we sell. Boughner Bros. are reliable dealers, they want to serve you well.

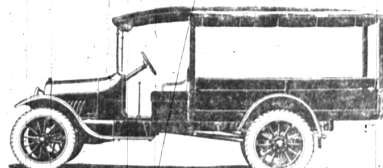
SATURDAY, MARCH 11

A LOVELY FLOWER WILL BE GIVEN EVERY LADY WHO
SEES OUR DISPLAY ON MARCH 11.

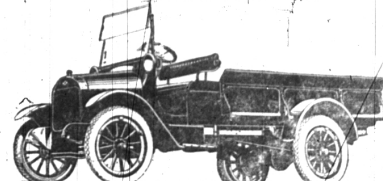
Immediate Delivery On Any Style



SUPERIOR MODEL SEDAN
Price \$875.00 f.o.b. Flint



7-C LIGHT TRUCK
Price \$920.00 f.o.b. Flint



ONE TON TRUCK WITH OPEN EXPRESS BODY
Price \$1245.00 f.o.b. Flint

FACTS ABOUT THE CHEVROLET
More Miles Per Gallon of Gasoline.
More Miles Per Dollar On Tires.
Lowest Cost Per Mile On Upkeep.