

BIRMINGHAM ECCENTRIC.

FORTY-THIRD YEAR. NO. 8.

BIRMINGHAM, CALHOUN COUNTY, MICHIGAN, FRIDAY, JUNE 18, 1920.

PRICE 7 CENTS

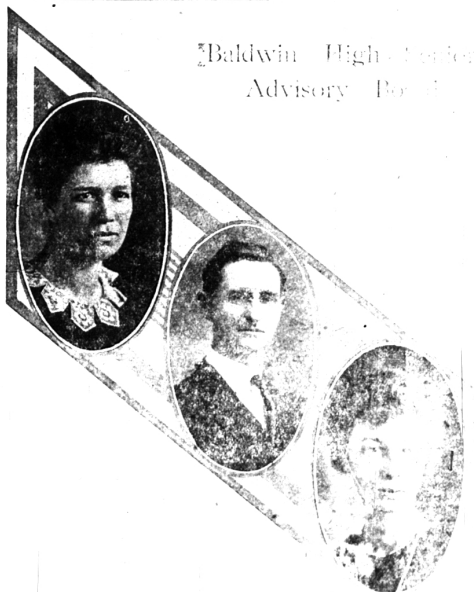


Members of Baldwin High School...
Miss Ann Blakeslee, William...
Gilbert, John Atner, Miss Edith...



Members of the Birmingham Board of Education...
President J. H. McInnis, Boston...

Baldwin High School Advisory Board

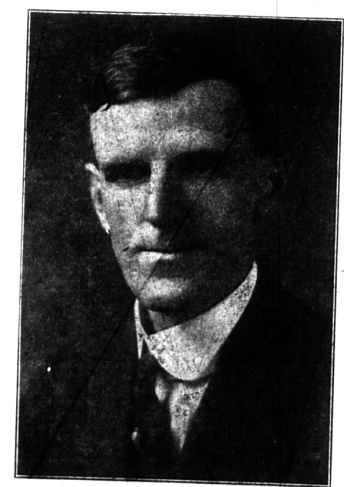


Left to right: Miss C. Hardy, W. J. Yostacker,...

KNIGHTS OF PYTHONS
The Knights of Pythons...
The organization...
The members...

USE WELL EDUCATION
TO THE STATE
The state...
The education...

TO LOWER PRESENT
WELL EDUCATION
The present...
The well education...



Clarence Alet, Superintendent of Birmingham Public Schools.

Some have...
The...
The...
The...