

Look! Here is the globe spread out flat before your eyes. See those stars? Every star shows where a U. S. Navy ship was on September 2nd, 1919. The Navy travels the Seven Seas.

Don't you want to see the World?

ROMANCE is calling to you! Strange and smiling foreign lands are beckoning to you. Shove off and see the world!

Learn to "parley-voov" in gay Parce. See the bull-fights in Panama. See surf-riding on the beach of Waikiki.

Learn the lure that comes with the swish and swirl of the good salt sea. Eat well—free; dress well—free; sleep clean—free; and look 'em all straight in the eye—British, French, Chinese, Japanese, Spaniards, Egyptians, Algerians and all manner of people.

Come! Be a real man of the world. See the world. See it with

the red-blooded, hard-working, hard-playing men of the U. S. Navy.

Pay begins the day you join. On board ship a man is always learning. Trade schools develop skill, industry and business ability. Thirty days care-free holiday each year with full pay. The food is good. First uniform outfit is furnished free. Promotion is unlimited for men of brains. You can enlist for two years and come out broader, stronger and abler.

Shove off—Join the U. S. Navy. If you're between 17 and 35 go to the nearest recruiting station for all the details. If you don't know where it is ask your postmaster.

Shove off! -Join the U. S. Navy



Vitt Family in Limelight. With Oscar as the Ace of the Western Aggregation

Every baseball fan has heard of Oscar Vitt, the San Francisco high school kid who started with that coast league club, went to Detroit and is now with the Boston Red Sox. But

NOT MUCH DIFFERENCE
"What's the difference between a pessimist and an optimist?"
"That's easy: a pessimist acts the way he feels, while an optimist acts the way he thinks he ought to feel."

An Epitaph.
Beneath this stone
Lies Jasper Lodge.
He thought a Hokey car
Could doke.

Expert Knowledge.
He. This account of a fight says that the Germans were felled right along by our men.
She—I guess they felled them with a machine gun.

A Real Housekeeper.
"This is a good housekeeper, isn't she?"
"Splendid. She even shines the living cups her husband has won."

Mean Hint.
"There is so much in that girl's manner which is put on."
"I suppose she wants it to match her complexion."

Would Tell It to Father.
She—I don't think father would ever hear of my marrying you.
"All right, then, we'll tell him, ourselves."—Barnmouth Jack of Lantour.

TRY A TRIBUNE WANT AD.



Oscar Vitt.

Oscar, it appears, has some illustrious cousins, all of whom are members of Vitt's Grange in Oakland town. Lawrence Vitt who recently returned from 18 months' service in France, is the main attraction. He plays third. Three other brothers also wore in the

franks—Henry, second base; Ed, short-stop, and John, left field. Joe Vitt, the brother, acts as manager. He was ready for an officer's training camp when the armistice came.

ILLUMINATING POULTRY HOUSES

During the past few years rapid advancement has been made in lighting poultry houses in the winter months. It has been found that by turning on electric lights or bright light gasoline lamps at twilight and continuing the light until nine o'clock at night the egg production is materially increased. Most poultrymen who use this system also turn on lights at six or six-thirty on the winter mornings.

Prof. F. C. Hare of the division of poultry husbandry, Clemson college, S. C., recently returned from Cornell university, where he lectured at the Cornell summer course, reports that the experiments conducted at Cornell university last year went to prove that the best results were obtained by turning on the lights at three o'clock in the morning and allowing the hens to go to roost at the usual time. However, this study backs up the statement made in California, where this system originated, that it is only necessary to increase the hours of daylight to summer conditions. If you wake up the birds very early, they should go to bed at dusk.

Chicory.
In some parts of Cape Province, South Africa, chicory gives a yield of \$250 to \$300 per acre, Johannesburg being the chief market.

FORGET ALL LINES IN MEMORIAL TO COL. ROOSEVELT

LEADERS OF EVERY PARTY ASSOCIATED IN NON-PARTISAN ORGANIZATION TO HONOR AMERICANISM.

PROMINENT PEOPLE ACTIVE

Dominant Figures of Every Political Affiliation Lend Their Aid to Plans for Monument to Great American.

One of the pleasing features of the campaign to provide funds for a monument and fitting memorial to Theodore Roosevelt is the fact that the movement is non-partisan.

In the long list of names of the various state committees now interested in the work of obtaining such funds, as well as in the list of the national executive committee, appear the names of many of the most prominent Democrats in the United States, as well as the names of Republicans and men prominent in other walks of life aside from politics.

Leading men throughout the country, regardless of political or personal views, responded instantly to the call for leaders when the plan was mentioned, and the movement since has grown to such an extent there remains but one thing to do—that of making certain the success of the plan. A glance down the list of Roosevelt Memorial Association members discloses the following men prominent in Democratic circles:

Thomas P. Smith, a member of the national committee, Tammany secretary and congressman; Alton B. Parker, former chief justice of the Court of Appeals, who was the Democratic presidential candidate against Col. Roosevelt in 1904; Hon. Franklin K. Lane, Secretary of the Interior; Robert Adamson, former secretary to Mayor Gaynor of New York City and former fire commissioner of the city of New York; Thomas L. Chabourne, former University of Michigan football star, now a prominent New York lawyer; George Harvey, editor of the North American Review and Harvey's Weekly; Congressman James A. Gallivan, of Massachusetts; Theodore Francis Green and Richard B. Constock, both of Providence, R. I.; Hon. Samuel M. Ralston, former governor of Indiana; Thomas Taggart, chairman of the Democratic national campaign in 1904, who has accepted the honorary chairmanship for Indiana; Hon. George F. Turner, of Spokane, Wash., formerly United States senator; Senator George E. Chamberlain, of Oregon, who is a member of the National Committee; Luke E. Wright, former governor of the Philippines; former Gov. Luke Lea, of Nashville, Tenn., colonel in the American Expeditionary Forces; the late John Mitchell, noted labor leader and member of the New York State Industrial Commission, and John M. Parker, of Louisiana, a member of the National Committee.

July Imports Break Record

Were Largest in History of the Country

Foreign trade of the United States came nearer reaching a balance during July than it has in any month in several years, the department of commerce announced today. The net increase in imports and a sharp reduction in exports.

Imports valued at \$315,000,000 exceeding the amount brought to the United States during any previous month in history.

Exports dropped \$350,000,000 from the high figure of June, but amounted to \$270,000,000. For the seven months ended with July exports totaled \$4,018,000,000, while imports amounted to \$1,355,000,000 for the period.

Believe Magnetic Poles Have Slow Motion Around the Geographical Poles

The geographical poles of the earth are the extremities of the imaginary line passing through its center of gravity and about which it revolves, and are therefore symmetrically located with regard to the equator. The magnetic poles, however, are not coincident with the geographical poles, nor are they diametrically opposite to each other. Prior to the recent attempt of Amundsen to determine the north magnetic pole, the only other was by Capt. James Ross in June, 1831, who found the dip of the magnetic needle to be 89 degrees, 56 minutes, 5 seconds, in latitude 79 degrees, 5 minutes, 2 seconds, north and longitude 91 degrees, 45 minutes, 8 seconds, west, which is in King William Land, Canada. The result of Amundsen's observations has not yet been published by the Norwegian authorities. For the south magnetic pole, from a consideration of all the results available according to the United States Coast and Geodetic Survey, the position of latitude 72 degrees, 7 minutes, south, and longitude 156 degrees, east, has been tentatively adopted. These values are only roughly approximated and for that reason are given only in degrees and minutes. By reason of the annual variation of the magnetic needle, it is believed the magnetic poles are not stationary, but have a slow motion around the geographical poles. The subject is shrouded in mystery and constitutes one of the many as yet unsolved problems in terrestrial physics.

A Team of Horses Won't Accomplish Much Unless It's Hitched Up

Every farmer knows that and every progressive farmer realizes that he must team up with his fellow agriculturalists if either of them is going to get the most out of the business of farming.

The Michigan State Farm Bureau

is going to harness the farmers of Michigan into one unit for the purpose of pulling agriculture out of danger into prosperity. The drive is starting in Oakland County October 15th.

Remember the Date—October 15

Any day after that you may expect to be visited by farmers, who know the farmers' problems and how the re-organized farm bureau is going to solve them. Every one of the 5,500 farmers in Oakland County will be visited and given an opportunity to join the farm bureau federation, which must have the solid support of the majority of the agriculturalists of the state if it is to act most efficiently and successfully in promoting farm interests.

The major aims of the Michigan State Farm Bureau are to improve marketing and transportation conditions—get closer to the consumer and teach the general public farmers are not rolling in wealth as is the city belief—promote rural educational methods and advise the farmers of everything pertinent to their welfare—deal with measures rather than men in politics and insist constantly on a "square deal" for agriculture—help the farmer get competent labor at a reasonable wage—in short, to do anything and everything that will make farming more profitable and attractive.

But You Can't Get Anything For Nothing

Everybody knows that. So to supply funds to carry on this great work the membership fee is set at \$10.—\$5. to the county bureau and \$5 to the state.

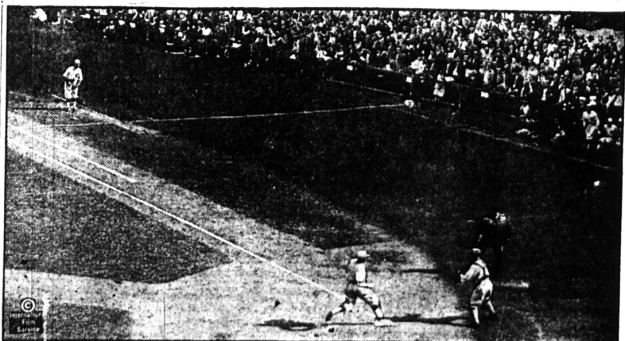
In Illinois 75 per cent of the farmers have enrolled in the farm bureau organization, which has a program identical to Michigan, but Michigan is going over the top closer to 100 per cent, and Oakland County is leading the way.

Oakland County Farm Bureau

Information at Pontiac Office

(Box 137)

Join the Farm Bureau



The victory of the Cincinnati Reds over the Chicago White Sox in the first game of the world series was a shock to the Sox fans. The photograph shows Ruetter, the Reds' pitcher, clinching the game by scoring in the fourth inning after making a three-bagger.