



The Ford Sedan, \$695 f. o. b. Detroit, is a handsome enclosed motor car that meets every demand in an up-to-date enclosed car. A roomy interior seating five; deeply upholstered with fine cloth; plate-glass sliding windows; silk curtains; latest type of ventilating windshield; large doors—everything for comfort, and the everlasting regular Ford chassis to carry it, all means safety with simplicity in operation and the lowest cost for maintenance. The real family car—just as delightful on the farm as it is in town. Come, see it.

BOUGHNER BROTHERS,
Birmingham.

These Are Walking Days

Enjoy Hiking in John Kelly Boots

The crisp, clear days—the walking days—should be made days of comfort. The well-groomed foot is the carefully-fitted foot. A glove-fitting Boot is the master touch to the well-groomed woman. For outdoor wear we have some beautiful new "JOHN KELLY" Shoes that will appeal to women of good taste.

Henry W. Pauli

WALK-OVER BOOT SHOP
47 North Saginaw Street, Pontiac

EXPERT SHOE REPAIRING done by our Messrs. Shearer and Mackie. Right Prices.
Ladies' and Gents' Shoes Shined Here

WANT A GOOD POSITION?

PREPARE FOR ONE IN PROSPEROUS DETROIT BY ATTENDING AN ACCREDITED SCHOOL—THE

DETROIT
Commercial Institute

SEND FOR FREE BULLETIN. 61-3255-5745 WEST GRAND AVENUE

ANCTION

M. H. BLUNT, Auctioneer

Having leased farm, the undersigned will sell at public auction on the premises known as the JAMES PHILLIPS FARM, 2 1/2 miles east of Birmingham, on the Crooks Road, 1 mile west of Big Beaver Station, Rochester Carline, on

MONDAY, MARCH 11

At 12:00 m. sharp, Eastern time, the following described property:

- Road Wagon Iron Lead Roller
- Low-wheel Truck Extension Ladder
- Open Buggy, and Pole Hay Rake
- Two-seated Truck Corn Planter
- Grain Binder Superior Grain Drill
- Corn Binder Iron-bean Shovel Plow
- Potato Planter Gale Riding Plow
- 2 Walking Plows Hand Corn Sheller
- Disc Harrow Gravel Box Hay Rack
- Spring-tooth Harrow Hay Loader
- Spike-tooth Harrow Feed Grinder
- Set-Bo Sleighs Blacksmith's Forge
- Henry Single Harness 2 Fly Wreath
- 2 sets Boggy Harness Storm Cover
- 2 sets Heavy Double Harness
- 2 two-horse Riding Cultivators
- 2 One-horse Walking Cultivators
- Harrows-makers Horse Step Ladder
- Hay Fork, Ropes and Pulleys
- 2 sets Double Mills, Ropes and Lines
- Two-wheel Milk Truck Tank Heater
- 2 sets Wagon Springs
- About 50 lbs Oats Cotton Grain Bags
- Cross-cut Saw Horse Clippers
- Corn Sheller, power attachment
- Iron Pig Trough Quantity Furniture

and other articles too numerous to mention

TERMS—All sums of \$10 and under, cash; all sums over \$10, 3 months credit with approved indorsed bankable notes, with interest at 6 per cent per annum.

FRANK SCHLAACK, Clerk. FREDERICH J. KIRTS, Prop.

GEO. A. SMITH

Auctioneer

DETROIT, MICHIGAN

All kinds of farm stock and implements sold. Terms reasonable. Satisfaction guaranteed. 12-years experience.

Farm Sales a Specialty

Dates Made at this Office

FOLEY'S HONEY AND TAR
For children's safe use. No. 10 container

NOTICE TO PARENTS

Have you a son overseas? Have you a son in the U. S. service?

We would be pleased to print their letters—leaving out the personal and home matters. Such letters would prove very interesting to our readers. Bring them in and we will do our part.

THE ECCENTRIC.

NEW COAT OF MAIL

TROY

Fred Schrock has a new Ford car. Glenn Hadden has bought a 600 dol. lar-truck.

The Gabell family are moving into O. Phillips house.

Service next Sabbath in the Troy church at 10:30 a. m.

Sorry to relate is C. Sullivan has been very poorly of late.

The many friends of Mrs. Sara Scott, are sorry to learn of her recent illness.

Mr. and Mrs. Bert Trumbull of Detroit, were weekend guest of Mr. and Mrs. Galloway.

The Hans family are leaving the E. E. Lawrence farm. Said farm will be run by Floyd Lawrence.

James Smithburn has rented the Maple Grove on the S. B. Wattles farm, and will make Maple Syrup this spring.

Miss Edna Aspinwall who underwent a very serious operation last week at Grace hospital is doing as well as could be expected.

The Reogener family South of Troy move to Algonac, where they own a nice property. They will raise garden truck for the resorters.

Elmer Maitrot, is at home again. His son Ellsworth and wife have gone to Washington, Macomb County to reside with the Rowley family.

A number of friends—neighbors of Mr. and Mrs. Fred Churchill, walked in on them Saturday night for a very pleasant and social event. Light refreshment was served.

Eugene Burrows, who has recovered from the measles at a southern sanatorium has been ordered out for coast duty. He has won high honors as a Marksman. Gene says 'tis the life to live."

Mrs. Sheerman of Highland Park, owners of the Aspinwall homestead—the owner of many restored old. Some are at the farm here and a number at her city home. She comes to the farm for Jersey milk for the pet. City milk, not good enough.

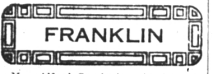
Nine ladies at the Red Cross meeting last week. The next few weeks the workers will meet with Mrs. Phillips. Some beautiful work was turned in at last meeting from the Clawson ladies and grandma Salino of Beaver Roads.

The event of the season was a surprise on Mr. and Mrs. Corneal Sullivan at their home in Almont, February 27. A picnic dinner was served. "Hoover" was not in it. Twenty-two went from Troy to Almont. A picnic picnic will be held in their Maple Grove.

Catarh Cannot Be Cured

with LOCAL TREATMENT, as they cannot reach the seat of the disease. Catarh is a disease influenced by constitutional conditions, and in order to cure it, an internal remedy, Hall's Catarh Medicine is taken. This medicine acts on the blood on the mucous surfaces of the system, and cleanses the system. It is composed of some of the best tonics known, combined with some of the best purifiers. The perfect combination of the ingredients in this medicine is what produces such wonderful results in curing catarh. Send for testimonials, free.

Dr. CHENEY, P. O. Props., Toledo, O.
All Drugists, Etc.
Hall's Family Pills for constipation.



FRANKLIN

Mrs. Alfred Currin is quite ill. The school is closed for a week. The teacher being ill.

Mrs. Robert McCrumb was a caller in Franklin one day last week.

Rev. J. W. Ayling is enjoying a visit with his sister from the state of Washington the past two weeks.

Mr. and Mrs. J. W. Ayling have been entertaining Rev. and Mrs. Earl Hart and little daughter from Montana the past week.

There will be a Hard Time Party next Friday night, March 8, 1918 in Franklin hall. For the benefit of Franklin Red Cross Unit.

Miss Elva Levee has returned to her work at the home of Mrs. Harry Hatley, after helping her parents care for her little brother in his sickness and death.

The school will be services at the church next Sunday 10:30 a. m. will be preaching followed by Sunday school. There will be a prayer foundation. Anyone wishing to donate food for the church please bring it or let it be called for what may be sent for.

Collie Got Name From "Collar"

The collie's name appears to be shrouded in mystery, but there seems to be a fairly reasonable foundation for supposing that it is from "coll" or "collar," on account of the broad white mark around the neck which is seen in the majority of these dogs.

Detroit United Lines

Birmingham Time Table

Eastern Standard Time.

South-bound—Limited—6:55 a. m.
South-bound—Express Service—5:30 a. m. and hourly to 6:30 p. m.
Then Locals, 7:20 p. m. to 11:30 p. m.
South-bound Locals—4:55 a. m.
a. m., 6:40 a. m., 6:55 a. m., 6:30 a. m., 6:15 a. m., 6:40 a. m., 7:00 a. m., 7:20 a. m., 7:55 a. m., and hourly to 1:55 p. m., 2:45 p. m., 3:30 p. m., 3:10 p. m., 3:35 p. m., 3:55 p. m., 4:30 p. m., 4:55 p. m., 5:55 p. m., 7:30 p. m., and hourly to 11:30 p. m.

North-bound—Express Service—6:52 a. m., and hourly to 4:52 p. m.; then half-hourly to 6:52 p. m., 7:52 p. m., and hourly to 11:52 p. m.; 12:42 a. m.

Locals, Birmingham to Pontiac only, 6:50 a. m. and 6:25 a. m.

An additional car leaves Detroit for Birmingham at 8:30 p. m.

FLINT DIVISION

Change at Royal Oak for Rochester, Orchard Park, Rose and Flint City. Through limited cars for Flint, Saginaw and Bay City at 8:30 a. m. and every two hours to 8:30 p. m.

Entire Tunics of Tarnished Silver, Dropped From Neck to Knees.

Warrior-Like Corsage is Embroidered With Pearls, Brillants and Flashes of Steel—Jewel Headdress.

Not only Cherut, but many other French dressmakers, have lent their ear to making a pronounced fashion out of silver tissue. Two years ago, observes a prominent writer, we grew exceedingly weary of evening gowns made of superexpensive pieces of tulle on a metallic foundation, and when the thought of silver and gold tissue presents itself as a fashion we turn away from it in a petulant snid.

But wait! This revival of a coat of mail for women, the warrior's uniform of ancient days which no modern fighter would touch, is neither a more pleasing thing than the evening gown of metallic cloth.

Entire tunics, in the twelfth century fashion, are made of tarnished silver dropped from neck to knees, or longer, over skirts of blood red or midnight blue satin or velvet. Except for the coarseness of the material, the tunics have all the simplicity of primitive dressing. Their introduction into the early spring fashions has brought about a quantity of silver used in every way.

Mme. Simone of the Theater Antoine in Paris, is wearing, I hear, a wonderful gown which is being copied for this country. It is of silver cloth faced with red, hanging in panels on the ground over a slim, tight skirt that clings to the figure as she walks. The warrior-like corsage is embroidered with pearls, brilliants and flashes of steel. To it she adds a warrior's headdress made of the same jewels as in the corsage and mounted on silver cloth.

Wherever silver can be flicked in and out of a frock to entice it, the designer loses no chance of trying out her ingenuity through this channel. When she abandons the Russian blouse of gold and bronze metallic cloth, which drops over a skirt of bronze satin, she takes the same material and uses it in blouses, cuffs and high, wrinkled collars that enclose the chin like a fence.

It is a strange idea, this bringing out of a new coat of mail for women as the spring approaches. Is it a POLKA DOTS AND WIDE BRIM



The novel use of polka dots combined with a large inverted brim makes this hat definitely engaging. It is designed for the tourist who wishes to bring joy to herself and all beholders, and is fabricated in blue and white silk, with the polka dots as the sole trimming.

SOME SPRING FASHION TIPS

"Jen Blouson With High Collar Are Popular—Pumpkin Color Is Worn With Navy Suit Jacket Suit."

A swager linen blouse of white recently seen had a high collar, plaited frills and long bands of rose-colored linen, which were stitched the way down the upper part of the sleeve. The effect was decidedly new and interesting, observes a fashion writer in the Philadelphia Public Ledger.

Very smart and attractive are three-piece or middy suits evolved in silk and cloth combinations, and these have been becoming lines for youthful figures.

Decidedly unique is this: Pumpkin yellow handkerchief linen is developed into a manly tugged frock sleeveless blouse to wear with a navy suit whose jacket is short and boxlike in the latest fashion line.

A lovely shade of amethyst hue draped and clasped with a silver

FROCKS FOR THE AFTERNOON

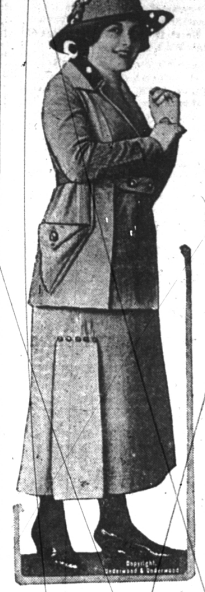
Charming Dresses Which May Also Be Worn on Simple Dinner Occasions, Restaurant or at Home.

Nothing is more delightful to begin or choose or more satisfactory to own than the dainty frocks suitable for afternoon wear, or which may be worn as a simple dinner dress in the restaurant or at home. Fortunately, observes a fashion writer in the New York Herald, one can buy these frocks on occasions at comparatively small cost, and if one is clever at having them made according to individual taste, a bit of silk, chiffon or crepe de chine may be picked up at odd times and a piece of lace to go with it and later put together, with some charming result. The laudable tendency to Hooverize one's clothes fits in happily with some of the most approved styles of the day.

A gown of pink chiffon narrows in effect toward the bottom as so many of the moiré gowns do. The use of a lace band of white lace across the bottom of the skirt is very effective. These

ATTRACTIVE SPORTS COSTUME

ogitation of their first victory toward snuffage and the fact that they may be related as warriors today in civic, national and war work?



This is just the suit for the girl who is going gunning for beauty, for it is well equipped with outer pockets. Of course she won't need a gun. The whole effect of this tasty costume is one of readiness for sport. It is fashioned of durable jade dress corduroy that will stand up under the severest usages. A collar faced with French blue satin and Norfolk straw on the jacket complete the costume.

FASHIONS AND FADS

Suits have straight skirts. Topcoats are made of taffeta. The silhouette remains unchanged. The finest suits are the simplest ones all of chiffon.

Foulards are becoming very plentiful. Afternoon dresses are made of etamine.

There is some evidence of a return of interest in fancy evening gowns. Black-and-white checked materials are favored. Pretty turbans are made of green leaves and roses.

There is a return to voiles, both printed and plain.

There are some very pretty evening gowns all of chiffon.

Slipper blouses are thought very well of in some quarters.

Button-baby blouses that find their place in nippy spring lines. Hats are of the simplest shape, depending entirely on line.

Velvet bows is slowly pushing itself into favor among laces.

Linked Buttons Fasten Front. Not only do cuffs but entire front fasten with linked buttons as instanced in a beige-tinted suit. They are found starting in caeter, under the semi-circle pin tuck which simulates a yoke on this model which contrarily has an open front.

Silk Jersey Jumpers. Decidedly charming are the silk jersey jumpers slipped on over perfectly simple plain skirts, and emphasis of outline can be imparted through the simple means of a sash.

A similar band of lace on the bodice which simple as can be, but has the charm of a good cut, a graceful neckline and sleeves that flare just below the elbow. A broad, soft girle of rose-colored satin somewhat darker than the tone of the chiffon gives a real touch and strengthens the color effect.

Ties Without Collars. Knotted ties, worn without collars, has shown some new blouses at the neck. The tie, wide and made of soft satin, is folded into a fat strip which outlines the V opening of the blouse, and the ends are made into a small, full bow at the base of the V. The blouse is finished at the neck opening with a fat hem-stitched facing.

Wool Collars. Knitted wool collars and cuffs are noticed on some of the finest blouses and dresses. Especially good looking is a pink silk waist, with a white knitted wool collar, on which a little pink embroidery is shown. A solid flower, with a spray of leaves and the scallop effect on water edge, is fashionable.

FIRST NATIONAL BANK

The Shrewd Employer

Often asks the applicant for a position if he has saved any money—because the employer knows that a man who handles his own business affairs successfully will be capable of looking out for the interests of the firm.

A Savings Account with us has a value beyond the mere accumulation of money. Get acquainted with our officers, who are glad to serve you.

MEMBER FEDERAL RESERVE SYSTEM

The Mysterious Dollars

The dollars disappear. Where they go, just why they were spent, and that a resulting good is not always in evidence is a mystery.

The problem of the mysterious dollars is easily solved. Deposit your funds with a Bank. Your cancelled checks will furnish the facts surrounding your expenditures. A growing savings account will be your reward.

Centrally located, convenient banking hours, courteous and efficient officers to serve you, the First State Savings Bank offers every facility for your consideration in choosing a permanent banking institution.

4 PER CENT INTEREST ON SAVINGS
Computed Semi-Annually

First State Savings Bank

Birmingham, Michigan

Capital **\$100,000.00** Surplus and Profits **\$100,000.00**

PONTIAC SAVINGS BANK

Pontiac Michigan

Extends to all an invitation to open an account with this strong Bank.

4% Interest Paid

In our Savings Department

S. E. BEACH, President. C. J. MERZ, Cashier.
CRAMER SMITH, Vice-President. L. C. GRANDALL, Asst. Cashier.

One of Largest and Strongest Banks in Oakland Co

Need a New Suit?

We'll Make It!

Chas. Peck

Merchant Tailor

Quarion Block
126 West Maple Avenue
Phone 16 J

We Guarantee Our Clothes and they Are Right!

Quality of Clothes
Essentials

DRY CLEANING AND PRESSING

Ladies' and Gentlemen's Garments

LET US SERVE YOU