

Ford
THE UNIVERSAL CAR

The Ford Sedan, with its exceedingly comfortable and refined furnishings, its neat appearance and every-day-in-the-year utility, is an especially attractive motor car for women. meeting so fully all the demands of social and family life—a delight to women who drive because of the easy, safe control. Summer and winter it is always ready—never a doubt about that nor never any fears for trouble on the way. Then the cost of operation and upkeep is very small. Sedan, \$645 f. o. b. Detroit.

BOUGHNER BROTHERS,
Birmingham.

Southfieldburg

Mrs. E. A. Smith is sick.

Mr. Ward Parks has been very sick. Ross Adams lost four valuable cows last week.

Miss Lillie Hallett is sewing for Mrs. V. B. Miller.

The Cleaners Society met with Mrs. L. D. Bingham Wednesday.

Joseph Brooks is attending the Supervisor's meeting at Pontiac this week.

Mr. and Mrs. Joseph Brooks and daughter Florence spent Friday in Detroit.

Mrs. A. Monroe has returned to her home after spending four weeks at Ionia.

Howard Renter of Camp Custer spent New Years with his parents Mr. and Mrs. James Renter.

John Johnson of Camp Custer spent New Years with his parents Mr. and Mrs. Jerome Johnson.

Lloyd Jackson of Camp Custer spent a few days last week with his parents Mr. and Mrs. G. G. Jackson.

Kenneth Bingham left Sunday for Dartmouth College, New Hampshire, after spending the holidays with his parents.

Eleanor Hasek, Isabelle Reid and Neida Parks have returned to Ypsilant where they are attending school after spending the holidays with their parents.

Mr. and Mrs. E. C. Baynes entertained about 125 friends and neighbors New Years eve in honor of their son Herbert of Camp Custer who was home on a furlough.

FOLLOW THE STYLE OF THE SWISS CHALET

Rustic Dwelling Is Especially Attractive With Rugged Landscape.

MODIFIED TYPE FOR CITIES

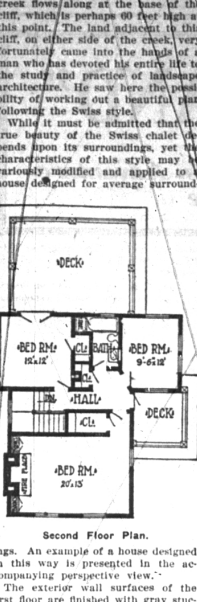
Design Which Has Little of Elaborate Ornamentation, May Be Used to Advantage With the Average Surroundings.

Mr. William A. Radford will answer questions and give advice FREE OF COST on all subjects pertaining to the subject of building, for the readers of this paper. On account of his wide experience as Editor, Author and Manufacturer he is, without doubt, the highest authority on all those subjects which address all inquiries to William A. Radford, No. 127 Franklin Avenue, Chicago, Ill., and only enclose three-cent stamp for reply.

By WILLIAM A. RADFORD.

The never-ending desire for something "new" which is characteristic of the American people, has its effect on architecture by bringing into use in this country the distinguishing characteristics of nearly every successful type of architecture which has ever been used in any part of the world. One of the attractive architectural adaptations which American architects have brought about is modeled after the Swiss chalet. The Swiss architecture is usually associated with rugged landscape. There are various places in the United States where the surroundings are suitable for the adaptation of this style of architecture. Many country estates in localities where the topography is characterized by abrupt changes in elevation with exposed rock surfaces, where the growth of trees and other natural features are agreeable, have been planned after the Swiss style to produce beautiful results.

Occasionally a beautiful spot of this type is found within the boundaries of a city. An excellent example is found



First National Bank

You Want to Do Something?

Let Us Help You

Start a Savings Account with the First National Bank—get the benefit of a four percent interest and the counsel of our Officers and Directors.

They will gladly assist you in accomplishing your purpose—it is considered a privilege here to be of service to customers.

MEMBER NATIONAL RESERVE SYSTEM

John Kelly Boot Models

There is a correct style in our "John Kelly" line for women for every occasion and at prices that will add to the pleasure of wearing those beautiful Shoes.

We are showing new models in Lace Boots with Louis heels; Walking Boots with medium heels, and other attractive styles from this famous house.

Beginning January 5 this store will close Saturday evenings at 10 o'clock.

HENRY W. PAULI
THE "WALK-OVER" STORE
PONTIAC

EXPERT SHOE REPAIRING done by our Messrs. Shoemaker and McKee. Right Prices.

Shoe Shining Done Here for Men and Ladies

Catarhal Deafness Cannot Be Cured

by local applications as they cannot reach the essential parts of the ear. There is only one way to cure catarhal deafness, and that is by the use of the Catarrhal Deafness is caused by an inflamed condition of the mucous lining of the Eustachian tube. When this tube is inflamed it has a running sound or imperfect hearing, and when it is entirely closed the hearing is lost. The inflammation can be reduced and the tube restored to its normal condition. Hearing will be destroyed forever. Many cases of deafness are caused by catarrhal deafness which is an inflamed condition of the mucous surface of the Eustachian tube. Hearing will be restored on the mucous surface of the system.

Will give one Hundred Dollars for any case of Catarrhal Deafness that cannot be cured by Hall's Catarrhal Medicine. Circulars free. All Druggists. Write to: F. J. CHENEY & CO., Toledo, O.

Modern Idea of Greatness.

When we ask what it is that we moderns deem to constitute greatness among the men of our own or comparatively recent time, we feel that the standard has somewhat changed. Says James Bryce in the Youth's Companion. We set less store by monarchs, for they do not fill the stage of the world as they once did, although some of them have still large opportunities for doing good or ill. Neither do we give quite such special honor to military glory as former ages did. Nevertheless, the essential qualities that distinguish the great men of our time are still the same. I speak chiefly of the greatness that consists in action, for the ruler, the statesman and the warrior do their work in the field of our world and can be judged by it, whereas the poet or the philosopher may have long to wait for recognition, and even a supreme scientific discovery may not be appreciated until long years have been spent in working out its application.

Financial Advancement

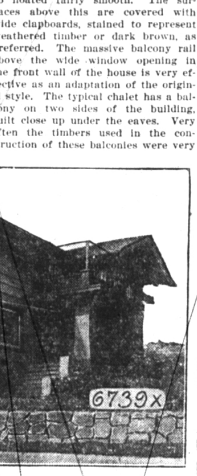
The advice, general knowledge and definite assistance, to be obtained through the agency of a strong financial institution, are of such import that no person should sacrifice the opportunities thus afforded.

The First State Savings Bank accords the individual needs and business requirements of clients a financial service in keeping with the highest of banking standards.

Let your commercial and savings accounts have the way for a broader acquaintance with the officers of this Bank.

4 PER CENT INTEREST ON SAVINGS
Computed Semi-Annually

First State Savings Bank
Birmingham, Michigan



PONTIAC SAVINGS BANK
Pontiac Michigan

Extends to all an invitation to open an account with this strong Bank.

4% Interest Paid

In our Savings Department

S. E. BEACH, President.
C. J. MERZ, Cashier.
CRAMER SMITH, Vice-President.
L. C. CRANDALL, Asst. Cashier.

One of the Largest and Strongest Banks in Oakland Co.

To Our Lighting Customers

All previous orders of the Fuel Administrator covering sign and display lighting have been cancelled. A new order, now in effect, permits sign and display lighting as in the past, excepting on

Thursday Nights & Sunday Nights

On Thursdays and Sundays no sign or display advertising lighting whatever may be used. Lighting to entrances of business places and porches of residences must be reduced to the minimum necessary for safety.

Lighting of show windows must be shut off entirely when the stores close. It is further ordered that as few lights as possible be maintained in homes and other places on Thursdays and Sundays.

This Company is required to enforce these rulings, and we ask our customers to conform cheerfully to the new rulings.

THE DETROIT EDISON COMPANY,
ALEX. DOW,
President.

GEO. A. SMITH
Auctioneer

BEAUTIFUL BIRMINGHAM THE PRIDE OF OLD CALIFORNIA

DETROIT, MICHIGAN

All kinds of farm stock and implements sold. Terms reasonable. Satisfaction guaranteed. 12-years experience.

Farm Sales a Specialty

Dates Made at this Office
Detroit United Lines

Birmingham Time Table

Eastern Standard Time.

South-bound—Express Service—
6:20 a. m., 6:15 p. m., and every 40 minutes to 6:45 p. m.; then local service 7:35 p. m., and every 40 minutes to 10:55 p. m., then 11:55 p. m.

South-bound—Locals— 4:55 a. m., 5:25 a. m., 5:40 a. m., 5:55 a. m., 6:05 a. m., 6:25 a. m., 6:35 a. m., 7:05 a. m., 7:25 a. m., 7:55 a. m., and every 40 minutes to 6:30 p. m.

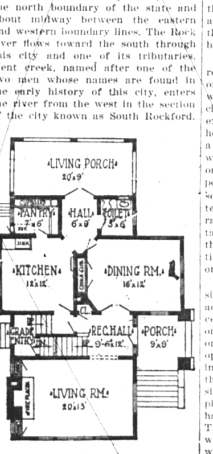
North-bound—Express Service—
7:14 a. m. and every 40 minutes to 8:34 p. m. Local Service, every 40 minutes 9:12 p. m. to 12:42 a. m.

FLINT DIVISION
Change at Royal Oak for Rochester, Oxford, Flint, Romeo and Imlay City. Through limited cars for Flint, Saginaw and Bay City at 8:12 a. m. and every two hours to 8:12 p. m.

ORDER FOR PUBLICATION—General State of Michigan the Probate Court for the County of Oakland. At a session of said Court held at the Probate office in the City of Pontiac, Michigan, on the 24th day of January, A. D. 1915. Present, Hon. John Stowell, Judge of Probate. In the matter of the Estate of THOMAS DICKINSON, Deceased.

Henry Dickson, administrator of said estate having filed in said Court a petition praying for a determination of the heirs of said deceased, determination of the heirs of said deceased, and the discharge of said administrator. It is ordered that the 24th day of January, A. D. 1915, at 10:00 o'clock in the forenoon, at said Probate office, be and the same be and it is hereby ordered that public notice thereof be given by publishing in this paper, for three consecutive weeks previous to the date hereof, the true contents of the foregoing petition and of the order of said Court, in a newspaper printed and circulated in said county.

(A true copy.) Judge of Probate.
GEORGE A. BEAVER, Probate Secretary.



elaborately carved. The decks above the porches of the design illustrated are intended to add an atmosphere of the rustic in the same way that the balcony is effectively used.

A novel method of supporting the roof overhanging the eaves consists of the only use of exposed timbers which is found in the design. The principal rafters are supported by beams extending out from the wall of the house. Near the center of these beams a timber is extended parallel to the wall of the house, the beam resting on this timber which is in turn supported by a second set of beams, not so long as those which support the rafters, but in it stopped a short distance beyond the outer beam toward the top and bottom of the roof, the ends of the rafters being cut with a simple ornamental design.

The entrance to the house is on the side and is through a cozy little porch adjoining the reception hall. The reception hall opens into the dining room on one side through double doors and on the other side through a casual opening into the living room. The living room extends across the front of the house and is 20 feet by 13 feet in size. In one end of it is a brick fireplace flanked with two windows which easily fit into the wall between them. This room is well lighted by the two windows mentioned and a broad triple window in front.

In the back part of the house is a large living porch which will be especially appreciated in the summer. This porch is intended to be fitted with screens in the summer and a sash during the winter. On the second floor there are three bedrooms and a bath. The decks make the very easily fitted with frames for canvas coverings which would make them very much appreciated as sleeping porches.

Need a New Suit?
We'll Make It!

Chas. Peck
Merchant Tailor

Quartern Block
126 West Maple Avenue
Phone 16 J

We Guarantee Our Clothes and they Are Right

Quality of Clothes is an Essential

DRY CLEANING AND PRESSING

Ladies' and Gentlemen's Garments

LET US SEE YOU

WANT A GOOD POSITION?

PREPARE FOR ONE IN PROSPEROUS DETROIT BY ATTENDING AN ACCREDITED SCHOOL—THE

DETROIT Business Institute

SEND FOR FREE BULLETIN 1400 PONTIAC WEST GRAND AVENUE

Rats Steal Flatiron.

Some plastering fell from the ceiling of the linen room at the Green house recently, says Pittsburgh Dispatch, and Harold Ray secured a ladder and climbed up to knock down the loose plaster remaining. He discovered a rat's nest and in it were three ladies' silk stockings, two perfume bottles and a flatiron, besides numerous other things not mentioned in this inventory. How the rats got the iron there remains a mystery.

Almost Like Birds.

It is a little known fact that flying fish, encountered in the tropics, actually flap their wings like the same birds. It is commonly supposed that the flying fish merely porpoise, sail, after getting a good start with rapid swimming. The flapping of their wings, however, is positively seen that it can be detected with the naked eye. Also, flying fish are delicious for the table.

The Cost.

Everything is worth what its purchaser will pay for it, according to an old saying.

Rattlesnake's Rattle.

The rattle of the rattlesnake is developed from the single concentric scale of epidermal skin, which in most snakes forms the internal tegument of the tail. The bone on which the root of the rattle rests continues to spread caudal vertebra and is covered with a skin which is the beginning of the rattle in young rattlesnakes.

Religion and Religion.

It is difficult to make a dollar and then to make the dollar make another. It is more religious to continue to spend a dollar than to save it, and at other times more religious to save a dollar than to spend it.

Need a New Suit?
We'll Make It!

Chas. Peck
Merchant Tailor

Quartern Block
126 West Maple Avenue
Phone 16 J

We Guarantee Our Clothes and they Are Right

Quality of Clothes is an Essential

DRY CLEANING AND PRESSING

Ladies' and Gentlemen's Garments

LET US SEE YOU