

# BRITISH AMBASSADOR ADVOCATES JEWISH STATE IN PALESTINE. NEW MODEL RURAL SCHOOL HOUSE AT MICH. STATE FAIR. OUR SAVED FOOD FED THE LIES

## Lord Reading, the First Jew to Represent Great Britain in Washington, Pledges His Support to Zionist Movement.

The Earl of Reading, formerly Sir Rufus Isaacs, one of the most brilliant advocates in the records of the English bar, was made Lord Chief Justice of Great Britain in 1913. Soon after the beginning of the war he came to the United States as Chairman of the Anglo-French Commission and concluded the Anglo-French Peace Treaty at the United States in September, 1917, on another financial mission and upon the death of Sir Cecil Spring-Rice, then British Ambassador to the United States, was appointed Ambassador and High Commissioner



### British Declaration Favoring Jewish State

Made by HON. ARTHUR J. BALFOUR  
With approval of British War Cabinet, November 3rd, 1917

"His Majesty's Government views with favor the establishment in Palestine of a national home for the Jewish People and will use its best endeavors to facilitate the achievement of this object.

"Both in my public and private capacity I warmly support the Declaration of His Majesty's Government in favor of the establishment in Palestine of a National Home for the Jewish People.

"I have moreover been profoundly impressed by the splendid energy of the American Zionists and by the wholehearted way in which, to no small extent under their leadership, the Jewish people of the United States have thrown themselves into the war. Though I feel that the many thousands of Jews who have enlisted individually in the armies of the United States and of the Allies are serving the cause of humanity as usefully as man can, I am particularly interested in the Jewish units which are being recruited on both sides of the Atlantic. It would be magnificent if some of them could strike a blow for the freedom of the world in the land of our ancestors.

"In the meantime I am glad to think that Palestine is being rehabilitated, even while the war continues, largely by Jewish money and Jewish energy, and an especially glowing note in the country which has provided as large a part of that money and no small amount of that energy. My good wishes are with the Zionists of the United States in the great work that is before them in giving effect to the Declaration of the British Government, and I shall esteem anything that I may be called upon to do in connection with that work as not the least important or the least satisfactory part of my duties as British Ambassador in Washington."

STRUCTURE JUST COMPLETED  
CONTAINS EVERY MODERN  
CONVENIENCE AND  
LATEST DEVICE.

ARCHITECTURALLY PERFECT

Erected And Equipped As Model For  
District Committees Con-  
structing New Seats  
of Learning.

With the completion of the model rural school house, on the grounds of the Michigan State Fair, at Detroit, a long felt need for a structure of this nature, centrally located, has been fulfilled. The movement for standard rural schools in Michigan has gained great momentum and it is for the purpose of assisting in this public enterprise that G. W. Dickinson, Secretary-Manager of the Fair Association, provided a site for the building and superintended its erection.

Since the inception of the standard rural school house propaganda, State Superintendent of Public Instruction Keeler has deemed it necessary to have a model school where school committees could visit and make suggestions. With this idea in mind he conferred with Mr. Dickinson and the structure has been erected under plans prepared by the state department. It will be completely equipped and ready for inspection during the Fall to be held in Detroit, August 30-September 3.

Built On Scientific Plans.  
The new edifice was constructed according to the latest and most scientific plans which have been drawn for rural schools and includes every modern convenience manufactured for such purposes. State authorities declare it is the finest structure of its kind in Michigan and when equipped will be the acme of perfection.

Particular attention was given the lighting system by the architects. Windows were installed in but one side of the building and the rays of light are distributed equally throughout the room, coming over the left shoulder of the student so he may see his work without any effort. Heating and ventilating arrangements have been made on the most healthful basis, eliminating drafts and effecting a uniform distribution of the heat. The health of the student depends largely on heat and ventilation. A basement hot air furnace, with side wall registers, has been installed and the fresh air vents have been arranged to conform with this system.

Every Modern Convenience.  
Toiletts, one of the most vital features of the standard school, are of the latest approved design. Two systems of the modern waterless type have been installed in order to give the committee selection. The water supply will be furnished from sanitary water coolers especially constructed for use in rural schools.

The library will be provided by the state. It is being selected under the supervision of Mary E. Spencer, state librarian and is of a neutral design, particularly rural school needs. Heating facilities, cloak room equipment and every modern convenience of the most recent design have been secured.

During the ten days of the Fair attendants will be stationed in the building to explain and demonstrate the benefits to the scholar. Good health is the greatest incentive to quick perception and it with the idea of benefiting the students of Michigan that Mr. Dickinson has taken particular interest in making the new building as near perfect as possible.

Built On Scientific Plans.  
The new edifice was constructed according to the latest and most scientific plans which have been drawn for rural schools and includes every modern convenience manufactured for such purposes. State authorities declare it is the finest structure of its kind in Michigan and when equipped will be the acme of perfection.

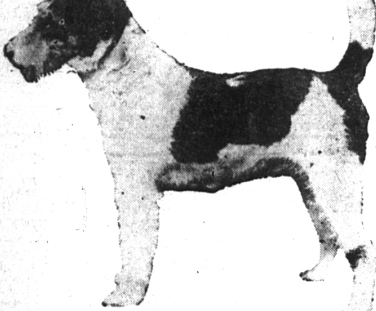
Particular attention was given the lighting system by the architects. Windows were installed in but one side of the building and the rays of light are distributed equally throughout the room, coming over the left shoulder of the student so he may see his work without any effort. Heating and ventilating arrangements have been made on the most healthful basis, eliminating drafts and effecting a uniform distribution of the heat. The health of the student depends largely on heat and ventilation. A basement hot air furnace, with side wall registers, has been installed and the fresh air vents have been arranged to conform with this system.

WHAT IT TAKES TO FEED  
U. S. SOLDIER FOR YEAR.

- Beef, 475 pounds.
  - Bacon, 275 pounds.
  - Wheat flour, 415 pounds.
  - Potatoes, 458 pounds.
  - Beans, 55 pounds.
  - Peanut, 12 pounds.
  - Coffee, 26 pounds.
  - Sugar, 73 pounds.
  - Straw, 3 pounds.
  - Condensed Milk, 11 1/2 pounds.
  - Butter, 11 1/2 pounds.
  - Wax, 12 pounds.
  - Vinegar, 3 1/2 pounds.
  - Salt, 12 1/2 pounds.
- Sugar From Palms.  
Sugar is extracted from 10 varieties of palms that grow in Ceylon.

### CHAMPION ENTERED IN DOG SHOW AT STATE FAIR

### MICHIGAN STATE FAIR PRESIDENT



Bench among the several hundred dogs that will compete for money prizes, trophies, cups and championship ribbons at the American Kennel Club show to be staged by the Detroit Kennel Club in connection with the Michigan State Fair, on Sept. 5, 6 and 7, will be dogs nationally and internationally famous; dogs that represent fortunes and dogs that are known to every fancier in the civilized world for being as near to perfection as a dog can be.

But of all those shown there will not be one to whom more fame is attached than to a dog now owned in Michigan, Champion Short Circuit, a wire-haired fox terrier. A few weeks ago he was crowned stud dog champion of Albion at the Ladies' Kennel Club show at Meadow Brook, L. I., the second most important dog show in America.

Ch. Short Circuit is an English dog who was imported several years ago. He gained fame in his early doghood by winning eight championships with out an interruption, a feat almost unequalled in dog history. The Victory



CHAMPION SHORT CIRCUIT.

Kennels in Barrington, Ill., America's most aristocratic and complete kennels, purchased Ch. Short Circuit but last April they sold him to Capt. Herbert Hughes of the Aviation Service and master of the Gallahue Kennels at Grosse Pointe, Mich.

Ch. Short Circuit has everything that you could wish for in a dog. He is just 100 per cent dog and besides a great best winner and marvelous showman in the ring, he is a stud dog without an equal. Among his get he numbers the wonderful Ch. Matford Vic, twice champion of America by winning best in show at Westminster, and Gallahue Nettle, who succeeded Ch. Matford Vic to the honor of being the best sire of her sex at Westminster this year.

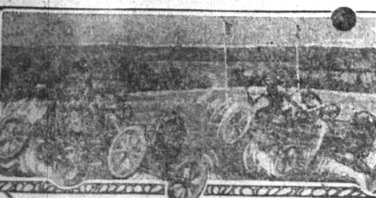
In the ring with Ch. Short Circuit will be Gallahue Nettle, his daughter and now a kennel mate, at Grosse Pointe. And there probably will be others of his get nearly as good for the big gun of the wire-haired fox terrier breed has produced many who fame will be lasting.

Bands, bands, bands and more bands, bands, bands and more bands to saturate Air at Mich. State Fair

Bands, bands, bands and more bands with their blare of trumpets will overrun the fair grounds during the 1917 Michigan State Fair at Detroit, August 30 to September 3. G. W. Dickinson, Secretary-Manager of the fair association, believes there is nothing like martial music to stir up the patriotism of the people, and he declares that, if this is true, no vicarious, but direct exposition without his patriotic spirit running riot.

The musical organizations will be headed by Cavallo and his renowned band of 60 pieces. This company of instrumental players will render a patriotic concert of popular and classical music every afternoon and evening. Dunbar's White Hussars, dressed in their gorgeous white uniforms will furnish the music for the feature exhibition around the grounds. This organization can be divided, at a minute's notice, into two bands.

### THRILLING MOMENT IN AUTO POLO CONTESTS AT MICH. STATE FAIR



Since the announcement of the dates for the 1917 Michigan State Fair, on August 29 to September 3, G. W. Dickinson, Secretary-Manager, has received hundreds of communications requesting him to arrange for auto polo as one of the attractions. The fair executive has contracted with Hankins' athletes to appear during the 10 days of the exposition. Probably no amuse-

ment has become so popular with the throng loving public as the auto polo contest. Every minute contains a thrill and the audience is at high tension all the time. The little cars, especially constructed for the game, are constantly colliding, turning, sumo-saults and performing all sorts of antics, while the drivers and players, continually are being thrown from their mounts.

Cleaning Leather. Leather-covered furniture may be washed with castile soap and lukewarm water and will look like new, the oil in the soap preserving the leather and helping to keep it soft. You might try this treatment carefully on the imitation leather.

War Romance in the Stars. Almost overhead in the early evening are some faint stars, constituting the constellation Corona. Hercules, or "Berenice's Hair." It commemorates Queen Berenice, wife of Ptolemy III, who offered her hair to Venus to secure his safe return from war. The queen's hair was sacrificed, but did not appear from the temple. Hence the legend that her golden locks had turned into a constellation.

### Food Administrator Writes President America Conserved 141,000,000 Bushels of Wheat.

CREDIT DUE TO WOMEN.

Meat and Fat Shipments Increased by \$44,000,000 Pounds.

Conservation measures applied by the American people in the United States to help to the Allied peoples and to our own forces overseas 141,000,000 bushels of wheat and 844,000,000 pounds of meat during the past year, valued in all at \$1,400,000,000. This was accomplished in the face of a serious food shortage in this country, bespeaking the wholeheartedness and patriotism with which the American people have met the food crisis abroad.

Food Administrator Hoover, in a letter to President Wilson, explains how the situation was met. The voluntary conservation program fostered by the Food Administration enabled the piling up of the millions of bushels of wheat during 1917-18 in the shipment of meat during 1917-18.

The total value of all food shipments to Allied destinations amounted to \$1,400,000,000, all this food being bought through or in collaboration with the Food Administration. These figures are all based on official reports and represent food exports for the harvest year that closed June 30, 1918. The shipments of meats and fats (including meat products, dairy products, vegetable oils, etc.) to Allied destinations were as follows:  
Fiscal year 1916-17... 2,166,500,000 lbs.  
Fiscal year 1917-18... 3,011,100,000 lbs.  
Increase..... 844,600,000 lbs.

Our slaughterable animals at the beginning of the last fiscal year were not appreciably larger than the year before and particularly in hogs they were probably less. The increase in shipments is due to conservation and the extra weight of animals added by our farmers.

The full effect of these efforts began to bear their best results in the last half of the fiscal year, when the exports to the Allies were 2,153,100,000 pounds, as against 1,296,500,000 pounds in the same period of the year before. This compares with an average 801,000,000 pounds of total exports for the same half years in the three-year pre-war period.

In cereals and cereal products reduced to terms of cereal bushels our shipments to Allied destinations have been:  
Fiscal year 1916-17... 229,900,000 bushels  
Fiscal year 1917-18... 340,800,000 bushels  
Increase..... 110,900,000 bushels

Of these cereals our shipments of the prime breadstuffs in the fiscal year 1917-18 to Allied destinations were:  
Wheat 151,000,000 bushels and of rye 13,900,000 bushels, a total of 164,900,000 bushels.  
The exports to Allied destinations during the fiscal year 1916-17 were: Wheat 135,100,000 bushels and rye 2,300,000 bushels, a total of 137,400,000 bushels. In addition some 10,000,000 bushels of 1917 wheat are now in port for Allied destinations or en route thereto. The total shipments to Allied countries from our last harvest of wheat will be 151,000,000 bushels, or a total of 154,900,000 bushels of prime breadstuffs. In addition to this we have shipped some 10,000,000 bushels of neutral dependent upon us, and we have received some imports from other quarters.

"This accomplishment of our people in this matter stands out even more clearly if we bear in mind that we had available in the fiscal year 1916-17 from our carry-over and our surplus over our normal consumption about 200,000,000 bushels of wheat which we were able to export that year without trenching on our home loaf," Mr. Hoover said. "This last year, however, owing to the large failure of the 1917 wheat crop, we had available from our carry-over and our surplus only just about our normal consumption. Therefore our wheat shipments to Allied destinations represent approximately savings from our own wheat bread."

"These figures, however, do not fully cover the conservation and sacrifice made during the past year by the whole American people. Despite the magnificent effort of our agricultural population in planting a much increased acreage in 1917, not only was there a very large failure in wheat, but also the corn failed to mature properly, and our corn is our dominant crop. "I am sure," Mr. Hoover went on in concluding his report, "that all the conservation of our people agriculturally as well as urban, who have contributed to these results should feel a very definite satisfaction that in a year of universal food shortages in the entire hemisphere all of those people joined together against Germany have brought through into sight of the winning harvest of our wheat and improved strength fully maintained, but with only temporary periods of hardship." "It is difficult to distinguish between various sections of our people—home, public eating places, food traders, urban or agricultural populations—in assessing credit for these results, but no one will feel the dominant part of the American women."

A hoarder is a man who is more interested in getting his bite than in giving his bit.  
Teeth to Blame. The worst criminals seem to be the teeth. The Pars' Medical takes a new snag at them, blaming them for sins usually charged to wronged, misjudged, or slandered. "Bleed insulate" but with enlarged glands and the primary lesion should be sought in the teeth, before incriminating the tubercle, and urges that the physician should insist on the teeth being put in order as an indispensable element of whatever treatment he is instituting.

# FRESH FISH

EVERY WEEK

Starting Monday, May 6, we will have a city delivery, making three deliveries a day.  
Leave Market at 8 and 10 a. m. and 3 p. m.  
Saturdays four deliveries—8 and 10 a. m. and 2 and 4 p. m.  
Buy where they sell below the Fair-Price Commission.

COMPARE OUR PRICES  
OUR QUALITY SPEAKS FOR ITSELF

## Our Cash Market

Phone 244

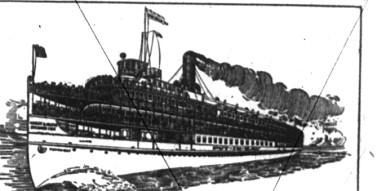
### WASH ELECTRICALLY

The Family Washing must be done, regardless of how hot the weather may be.

### LET

THE ELECTRIC WASHING MACHINE do your washing for you. It will pay for itself in the saving of labor, time, and the cost of a laundress. It also saves wear and tear on clothes because it washes without rubbing. Let us show you what this Machine will do, in our store or in your home.

## THE DETROIT EDISON CO.



### Lake Erie's Finest Resorts are Reached via ASHLEY & DUSTIN Steamer Line

Excursions Every Day  
Put-in-Bay—Cedar Point reached every day on the magnificent steel steamer Put-in-Bay, capacity 3200 people.  
Big Hotel Victory now open at Put-in-Bay.  
Hotel Breakers and the world's greatest bathing beach at Cedar Point.

Excursions every day to Put-in-Bay.  
Five hours on the boat. Leaving Detroit at 9:00 a. m., returning at 8:00 p. m.

Cedar Point Excursions on Sunday, Monday, Tuesday, Wednesday and Thursday. Steamer Kirby leaving Detroit at 8 a. m., returning at 11:50 p. m. Five hours at Cedar Point. Fair round trip, \$1.00.  
Piano's music for dancing on steamer Put-in-Bay. Ball Room, largest on Lake St. Clair.  
Ashley & Dustin Steamer Line, First Street Wharf, Detroit, Mich.

### Did You Know That Over 90%

Of the Conservatories and Educational Institutions using Player-Pianos in their music courses have chosen

## The Pianola Player-Piano?

—just one of the many features that so clearly and strikingly point to the unrivaled supremacy of the instruments of this most celebrated line!

The superiority in musical results and dependability that make the "Pianola" practically the unanimous choice of musical critics likewise insures you enjoyment and satisfaction in its ownership such as no other player affords.

## GRINNELL BROS.

Exclusive Michigan Representatives. 24 Stores  
Pontiac Store 73 N. Saginaw Street

If not convenient to come in, phone us for any information desired.

Let Us Print Your Sale Bills

The Bootlegger's Request. Asked if he had anything to say before receiving sentence to the county jail on his conviction as a bootlegger, a Vernon county offender told the judge he'd like to be allowed to collect before going behind the bars the \$8 one him from the sale of the whisky on which the prosecution was based—Kansas City Times.