

HOW MRS. BEAN MET THE CRISIS

Carried Safely Through Change of Life by Lydia E. Pinkham's Vegetable Compound.

Nashville, Tenn.—"When I was going through the Change of Life I had a tumor as large as a child's head. The doctor said it was three years coming and gave me medicine for it until I could call it a miracle from the city for some time. Of course I could not go to him, so my sister-in-law told me that she thought Lydia E. Pinkham's Vegetable Compound would cure it. It helped both the Change of Life and the tumor and when I got home I did not need the doctor. I took the Pinkham remedy until the tumor was gone, the doctor said, and I have not felt it since. I tell every one who is in need. If this letter will help others you are welcome to write to—Mrs. E. H. BEAN, 525 Joseph Avenue, Nashville, Tenn.

Lydia E. Pinkham's Vegetable Compound, a pure remedy containing the extractive properties of good food-faded roots and herbs, meets the needs of woman's system in this critical period of her life. Try it.

If there is any symptom in your case which puzzles you, write to the Lydia E. Pinkham Medicine Co., Lynn, Mass.

Don't Persecute Your Bowels

Get out cathartics and purgatives. They are the cause of all the trouble. **CARTER'S LITTLE LIVER PILLS** are the only pills that are gentle on the bowels. They are made of the finest vegetable matter and are the only pills that are safe for the most delicate system. They are the only pills that are safe for the most delicate system. They are the only pills that are safe for the most delicate system.

Small Pill, Small Dose, Small Price.

Genuine must bear Signature

ASTHMA

Dr. J. C. Kellogg's Asthma Remedy

ABSORBINE

Trade Mark U.S. Pat. Off.

for a fine complexion

you must do something more than use cosmetics. You must keep the blood pure, the liver and kidneys active and the bowels regular. You must also correct the digestive ills that cause muddy skin and dull eyes.

Beecham's Pills

offer you the needed help. They are mild in action, but they strengthen the stomach, gently stimulate the liver and regulate the bowels. They put the body in good condition so the organs work as nature intended. Backed by sixty years of usefulness, Beecham's Pills

are worth considering

Dr. J. C. Kellogg's Asthma Remedy

Dr. J. C. Kellogg's Asthma Remedy

Dr. J. C. Kellogg's Asthma Remedy

Dr. J. C. Kellogg's Asthma Remedy

Dr. J. C. Kellogg's Asthma Remedy

The Flower Beauties

Flowers and Shrubs by Their Care and Cultivation

There are three general methods of preparing soil for market: Dry lot feeding; feeding on pasture and forage crops; and feeding on dirty by-products. Dry lot feeding is meant for those who have a few acres of forage crops, such as alfalfa, timothy, clover, etc., and who wish to raise a few hogs. It is the most economical method, but it is also the most difficult to manage. The farmer must have a good understanding of the requirements of the hog, and he must be able to handle the manure properly. The second method, feeding on pasture and forage crops, is the most common. It is the most economical method, but it is also the most difficult to manage. The farmer must have a good understanding of the requirements of the hog, and he must be able to handle the manure properly. The third method, feeding on dirty by-products, is the most common. It is the most economical method, but it is also the most difficult to manage. The farmer must have a good understanding of the requirements of the hog, and he must be able to handle the manure properly.

A Beautiful Avenue of Shade Trees!

SPRING IN THE GARDEN

By E. VAN BENTHUYSEN.

Just as soon as the lilac and other spring-flowering shrubs have done blooming, prune them. Cut back to a strong eye or shoot, preserving the characteristic form of the shrub. Prune green hick with tobacco tea and the rose with lime water. Or try dusting arisid lime on the infested rose bushes. Use a sharp knife or scissors when gathering flowers. Early in the morning is the best time, and the bloom is not quite developed will last longest. Keep the stems of the newly cut flowers deep in water before arranging in bouquets.

Make a place for the petunia. It is one of the most accommodating of plants. It makes a fine showing in the garden, and it takes root rapidly. If there is a corner on the home grounds you haven't planned for try this year the petunia. Prepare the soil carefully, water petunia seeds up in water with a fine hose and watch the seeds grow. Look out for the big weeds, the little ones will be smothered by the rapid growth of the petunia.

If Jack Frost has found some tender seedling, plant it out of the straw immediately. Sprig with very cold water and shade from the sun's rays. Gladioli must be planted every two weeks for succession. The plants are beautiful and when placed among roses or with a background of shrubs are a brilliant spot in the garden.

Cannas like very rich soil and plenty of water during the growing season. Plant two feet apart. If they are the tall-growing sort, the dwarf kind can be planted closer. As the seed pods form, cut them off. A mulch of straw manure helps to conserve the water that is given them.

GARDEN NOTES

The flowers of the plumbaria resemble the most unusual shade of blue. It requires about the same treatment as the fuchsia and as a rule flowers continuously. It is a good plant for a cool conservatory and many succeed well with it in the window garden.

As the weather moderates toward spring the double glass in the hot bed sash will not be needed and the top sash can then be dispensed with or used to protect from frost plants that are set out too early.

Look to this tree about the home and carefully destroy all box cocoons, etc., that promise to develop into pests in the spring.

Look to this tree about the home and carefully destroy all box cocoons, etc., that promise to develop into pests in the spring.

SUCCESS WITH COSMOS

So cosmos early if you wish to get any satisfaction out of it. Push it along as fast as you can. If it does not transplant readily, therefore grow it in pots. Shift it along until it is growing in nine-inch pots. Then stick the pot in a border and from the time the plants are six inches high until the end of July the shoots should be pinched off. This will keep the plants low and stocky. Long after severe frosts your cosmos will be giving you your beautiful flowers for the winter.

PROPAGATING BY CUTTING

Where thousands of plants are grown for positions in the open air during the summer, this is an important operation from March onward. Considerable forethought and knowledge of the work are necessary to obtain the plants in suitable condition and in sufficient numbers, when the time for planting out arrives.

Although derided by some, the scarlet geranium still has hosts of admirers, especially since the introduction of the variety—Paul Crampel.

Cuttings of the varieties of which the numbers are short can be inserted now. These may be obtained from the old plants lifted from the beds in the autumn, or a few tops may be taken of the strongest of the cuttings in winter, inserted in light sandy soil they will soon root on a shelf in a warm house. Cuttings of fuchsia, coleus, ageratum, hellebore, verbena, fuchsia, fibrous-rooted begonia, etc., when required in quantity should be inserted in a bed of sand made up in a propagating frame with bottom heat. Three inches of sand will be sufficient and if this is made firm, well supplied with water and a bottom heat of 75 to 80 degrees Fahrenheit will be sufficient. The cuttings will be rooted in a week and ready for potting up singly in small pots.

Remaining in the hand such a short time, they can be dibbled in close together.

Lobelia, alternanthera, and mesembryanthemum can also be propagated by the thousands in this way. Provided there is good stock of old plants on hand, March is soon enough to commence propagating.

Early in February dahlias tubers, of which a large stock is required, should be brought into the propagating house. A large stock is required, should be brought into the propagating house.

RIBBON BEDS.

Good effects can be worked out in ribbon beds, by using different varieties of verbena in rows. To make an effective design, however, it will be necessary to purchase plants of each color from your florist as seedlings are quite sure to bring plants of all colors among the verbena family and therefore spoil the color effect, which is the prime motive of such a bed.

Good Judge.

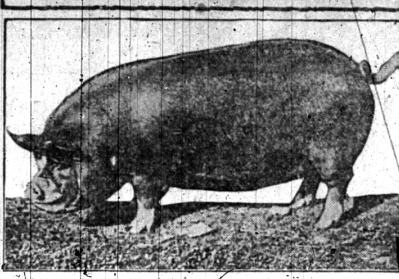
"I take great pride in my ability to judge human nature," said the Van Quennin. A few months ago I let a friend have \$10 and I was confident at the time he would not pay it back, and he didn't."—Kansas City Star.

Preparation for Garden.

A heavy coat of barnyard manure or a liberal dressing of bone manure makes a good preparation for the garden. How to do the work in the spring and get the land into the best state of till before seeds are put in.

Arrange to diversify your crops, to fertilize and build up your soil, and to run as many factories as possible by marketing your produce through live stock.

METHODS OF FEEDING SWINE FOR MARKET



(Prepared by the United States Department of Agriculture.)

There are three general methods of preparing soil for market: Dry lot feeding; feeding on pasture and forage crops; and feeding on dirty by-products. Dry lot feeding is meant for those who have a few acres of forage crops, such as alfalfa, timothy, clover, etc., and who wish to raise a few hogs. It is the most economical method, but it is also the most difficult to manage. The farmer must have a good understanding of the requirements of the hog, and he must be able to handle the manure properly. The second method, feeding on pasture and forage crops, is the most common. It is the most economical method, but it is also the most difficult to manage. The farmer must have a good understanding of the requirements of the hog, and he must be able to handle the manure properly. The third method, feeding on dirty by-products, is the most common. It is the most economical method, but it is also the most difficult to manage. The farmer must have a good understanding of the requirements of the hog, and he must be able to handle the manure properly.

Prevention and Treatment of Diseases Bound to Result in Failure—Cases Cited.

By E. R. HANBURY, Idaho Experiment Station.

There is no doubt that the more complete our knowledge of the cause of a disease the more perfect will be our means of prevention and the more rational our treatment of the same. The reverse is equally true. If our knowledge is based on a fallacy, our prevention and treatment is bound to result in failure.

Most of the fallacies regarding animals and their diseases have been handed down from one generation to another, and the number of those who have the least ground for existence. The following ones belong to this class:

- That there are certain signs of the zodiac during which castration of animals is highly unsafe.
- That there is a drug or combination of drugs which is specific for a certain disease, regardless of its intensity or complications.
- That we can cure systemic diseases by such manual treatment as pouring water or other fluids into the ear.
- That medicines to be effective must have a noxious odor, taste or origin.
- That we have such diseases as "the black jaund," "lost cut," and "wolf in the tail," which are not diseases.
- That animal life from its origin to death is in great part influenced by mysterious forces.

REASONS HOGS DIE FROM VACCINATION

Much Loss Caused by Treating Pigs With Impotent Serum and Crippled Methods.

(By Dr. C. E. LEPP, South Dakota Experiment Station.)

Losses are caused often by using impotent serum, or serum not properly tested.

Giving too small doses, even of good serum.

Underestimating weights, making doses too small.

Vaccinating sick pigs already infected with cholera and which may not visibly show sickness.

Careless methods. Vaccinating dirty pigs. Unclean quarters after vaccination. Failure to disinfect instruments. Failure to disinfect skin at site of vaccination. Exposure of serum to dirt.

Storing serum in warm place. Pouring serum in unsterilized vessel.

CLOVER BETTER FOR WINTER NURSE CROP

Late-Pasturing and Cutting Are Especially Dangerous—Give Crows Protection.

This kind of feeding is the best insurance of a good stand of clover. A half bushel or three pecks of grain as a nurse crop will protect the young clover plants at the same time they give them room to grow.

Winter killings often brought about by not allowing the clover to make a good growth in the fall. If the farmer cuts his clover late or pastures it down so that it goes into the winter without good protection to the crowns, he often finds much of it dead in the spring. Late pasturing and late cutting are especially dangerous to the clover field.

Bottle-Washing Machine.

A Wisconsin test of milk-bottle washing machinery shows that hand washing bottles nearly four times as many as machine washing. Where 500 bottles a day are washed the saving, according to this test, would be \$120 a year, which represents a good return on the investment.

Saves Time and Fertility.

Hauling the manure direct to the field, whenever possible, saves time and labor, as well as fertility.

Hot Water Each Morning Puts Roses in Your Cheeks



To look one's best and feel one's best is to enjoy an inside flush each day. To enjoy an inside flush each day is to enjoy an inside flush each day. To enjoy an inside flush each day is to enjoy an inside flush each day.

Girls and women with a lot of complexion spots, pimples or other blemishes, also those who wake up with a flushed face, but that is only a temporary condition, should begin this treatment at once. It will put roses in your cheeks and put roses in your cheeks.

A quarter pound of limestone phosphate costs very little at the drug store, but is sufficient to demonstrate that just as soap and hot water cleanses, purifies and freshens the skin on the outside, so hot water and limestone phosphate act on the inside organs. We must always consider that internal sanitation is vastly more important than outside cleanliness, because the skin pores do not absorb impurities into the blood, while the bowel pores do.

Women who desire to enhance the beauty of their complexion should just try this hot water and phosphate treatment.

HORSE SALE DISTEMPER

Don't try to get a horse through the distemper. It is a very dangerous disease and it is very dangerous. It is a very dangerous disease and it is very dangerous.

KIDNEY TROUBLE NOT RECOGNIZED

An examining physician for one of the prominent Life Insurance Companies, in an interview of the subject, made the following statement: "I have seen many cases of kidney trouble, and I have seen many cases of kidney trouble, and I have seen many cases of kidney trouble."

Public Officers' Bonds.

We bond those people than any other company in the world. Maintain a special department for bonding public officials. Agents everywhere. Write for rates to Old National Bank, Department of National Surety Company, 90 West St., New York City, America's Leading Surety Co., Ltd.

BACKACHE AND KIDNEYS

For the benefit of others, I gladly give this statement regarding the "Anuric" remedy. An elderly man, 76 years of age, suffered from backache, weak back, rheumatism, and could not control the excretion of the kidneys. It was discovered that "Anuric" cured his backache and the darting pains and aches of rheumatism, kidney and bladder troubles. This Anuric is 27 times more potent than Uricin, and is a true blood-maker, tissue-builder, and a restorative nerve tonic and that it will relieve the liver, regulate the bowels and purifies and enriches the blood. Dr. Pierce's Golden Medical Discovery is absolutely free from alcohol and injurious drugs. Its ingredients printed on wrapper. You can be certain it is a true blood-maker, tissue-builder, and a restorative nerve tonic and that it will relieve the liver, regulate the bowels and purifies and enriches the blood.

IN THE SPRING

Now is the time to bring to your aid Dr. Pierce's Golden Medical Discovery (its tablet or liquid form). This wonderful remedy helps to restore stomach to its natural health and strength and to secure proper flow of the digestive juices, a good appetite and full digestion of the food you eat. It invigorates the liver, regulates the bowels and purifies and enriches the blood. Dr. Pierce's Golden Medical Discovery is absolutely free from alcohol and injurious drugs. Its ingredients printed on wrapper. You can be certain it is a true blood-maker, tissue-builder, and a restorative nerve tonic and that it will relieve the liver, regulate the bowels and purifies and enriches the blood.

Wanted 50,000 Farm Hands

of experience at once on the farms of Western Canada and Ontario

To replace the young farmers who have enlisted for the war. Good wages and full season's work assured.

There is no danger or possibility of Conscriptio in Canada.

Reference required from all applicants. For special railway rates and other information apply to

M. V. McINNIS, 178 Jefferson Ave., Detroit, Mich.

Advertisement for a farm hand recruitment agency.