



**"The Painters' Paint"**

It takes good paint to please the practical, conscientious painter. He knows his success depends upon the quality of his paint. That's why so many painters insist on using

**Hanna's Green Seal Paint**

They know it is durable—"Made-to-wear." Twenty-five years of "knowing how" backs every can. Give it a trial.

Sold by

**The Birmingham Hardware**



**DETROIT TO Put-In-Bay-Cedar Point Cleveland-Sandusky DAYLIGHT ACROSS THE LAKE**

Every Day Excursions to Put-In-Bay Round Trip Fare Same day on Week Days **60c** Round Trip Sundays and Holidays **75c**

**Cedar Point Excursions—\$1.00 Round Trip**

On Sunday, Monday, Wednesday and Friday **Cleveland One Way Fare—Every Day—\$1.50**

Big Steel Steamer "Put-In-Bay" leaves Detroit every day at 8:00 a. m. Central Standard Time

Steel Side Wheel Steamer "Frank E. Kirby" leaves Detroit week days at 5:00 p. m. Central Time.

**FREE DANCING—Finze's Orchestra on Str. "Put-In-Bay"**

Whole afternoon at Put-In-Bay. Three hours at Cedar Point. Visit Perry \$1,000,000 Memorial. The Carr. Cedar, Dunes Park, etc. Big Beach, Bathing, etc. Lakeside, etc.



**Ashley & Dustin Steam Line Detroit, Michigan**

**WHITEHEAD AND STANDART**

**Real Estate Insurance Loans**

While outsiders are investing in Birmingham property, what's the matter with some of our own people taking a flyer and making a little "on the side?"

We have some very desirable Lots on a street which is being developed faster than any locality in the village. Nice deep Lots from \$600 up, with all city conveniences of gas, electricity, sewer, cement walks, etc. Add the terms are easy, with small initial payment. You deal direct with owners.

**WHITEHEAD AND STANDART**

**ORDER FOR PUBLICATION—General.**

State of Michigan, the Probate Court for the County of Oakland, do hereby certify that the following is a true and correct copy of the will of the late FRANK M. SMITH, deceased, as the same appears from the records of said court, to-wit: That the said FRANK M. SMITH, deceased, was a resident of the County of Oakland, State of Michigan, at the time of his death, and that the said will was duly admitted to probate in said court, and that the same is a true and correct copy of the original as the same appears from the records of said court.

FRANK M. SMITH, deceased.

Witness my hand and the seal of said court, at Detroit, Michigan, this 15th day of July, A. D. 1916.

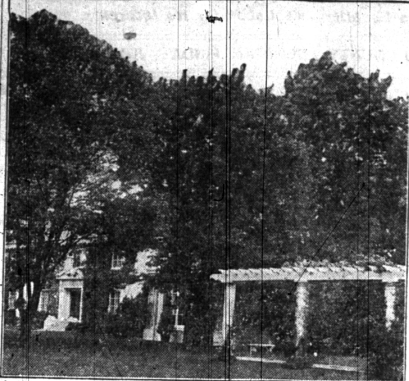
WALTER W. SMITH, Judge of Probate.

**The Purpose of an Advertisement**

is to serve your needs. It will help sell your goods—talk to the people you want to reach. An advertisement in this paper is a reference guide to those whose wants are worth supplying.

**HOME BEAUTIFUL**

Flowers and Shrubs Their Care and Cultivation



**HANDLE TREES WITH CARE**

By W. R. GILBERT.

To my mind, there is not half enough attention paid to the way trees are put into the hole when planting. Some people think that because trees have roots they should grow nearly on top of every ditch in the country.

For ten years I planted trees yearly. Half of the young trees are nearly useless for planting, on account of the way that they are pulled at the nurseries.

Some men, when they go pulling trees in the nurseries, pull away just as though they were pulling turpins in a hurry, snapping the roots together and throwing them away as if they were no more than rotten limbs.

Young trees, to my mind, should be handled as carefully as eggs. They should be kept in the center of the ground. When the roots are strained in the pulling they grow the first year badly and then die away. I examined the roots of a dozen young trees; there were two strained, and I cut the roots short in two more, for experiment's sake.

The ones that were not strained grow healthy from the start and are growing well. The ones that were strained grow nearly right the first year and died the second year, and the ones that I cut a little of the roots off lived in "decline."

The roots, when planting, should be spread out evenly in a broad hole, not deep. The roots just barely covered. Where some, or most people, perhaps, make the mistake is in straining the roots in a bundle in a deep hole.

Trees planted in this fashion are bound to fail. At least it has been my experience.

It is important to press the roots, especially, say after a month, because if the air gets down alongside the stem the tree is liable to fall.

I have found always that the fall was the best time for planting. When they were put in later I had more failures.

Another thing I noticed in planting, if the young trees are any length of time pulled, they are pretty sure to "go under."

I always keep the roots in a hole of soft water the day before planting, and I have found that they root more quickly than if they had not been steeped.

**FLOWER HINTS FOR BEGINNER**

By E. VAN BENTHUYSEN.

Flowers should have a friable, very fertile soil in which to grow. Often they will make a nice showing in very poor soil, but like humans they appreciate good care.

Do not allow the flowers to form seeds. As soon as the flowers begin to fade, pinch them off; your flowers will keep in bloom much longer and the blooms will be larger if you pay attention to this little detail. Pansies and sweet peas particularly require looking after.

Use your flowers in borders and around the sides of your lawn. Never make flower beds in the center of your lawn. A bit of green turf will care for is an asset to any home grounds.

If you want a soft, thick turf on your lawn mow it often and let the clippings lie where they fall. This keeps the soil from drying out too much and helps fertilize it as it decays.

Support sweet peas on a hedge of brush. This is better than poultry netting, as the sun does not heat it and burp the tender tendrils of the clinging sweet pea.

Plant your shade trees far enough away from the house to allow the air to circulate around the house. Sunshine in the home is a tonic and shade should be exercised when planting that trees do not interfere or shade the windows too much.

Do not plant your flowers too close together. Give them all a chance for life. Pansies should be planted ten inches apart; Petunias and Verbenas at least 18 inches apart; Marigolds, two feet; Poppies 10 inches; Zinnias, 18 inches; and Phlox a foot. Flowers will not be plentiful or thrifty if grown too close together.

**HOME GROUND BEAUTIFUL**

By L. M. BENNINGTON.

As soon as the spring flowering shrubs, like lilacs and others, have done blooming prune them. Cut back to a strong eye or shoot, reserving the characteristic form of the shrub.

This is the time to root the house plants. Do not encourage overwatering or fertilizing. Pinch back every bud that shows.

Look out for the weeds and do not let them grow a foot high and then pull them. By so doing you are apt to disturb the surrounding flowers. If they have not been attended to early in their existence better let them alone.

For autumn blooming plant the asters. There is an endless variety of colors and blooms and they come to shed their glory when other flowers are past their beauty stage.

One of the fastest growing vines we have is the kuczie vine (Pueraria, Thunbergiana). It comes from the south of Japan and is hardy.

Use a sharp knife or scissors when gathering flowers. Gather them early in the morning and keep them in a large pail of water for some time before distributing them around the house in vases.

**THE WINDOW GARDEN**

By L. M. BENNINGTON.

Pay attention to the potted plants as regards water and shade, for all plants require some shade during summer, especially from the afternoon sunburn.

If you have plunged your pots in

**Compare These Prices**

of Fisk Grey Non-Skids with the plain tread styles of several other standard makes:

3 x 30	10.40	4 1/2 x 35	31.20
3 1/2 x 30	13.40	4 1/2 x 36	31.55
4 x 33	22.00	5 x 37	37.30

Then you will begin to understand why Fisk users consider

**FISK**

**Non-Skids**

**The Best Tire Buy on the Market**

THIS year Fisk Tires are making greater mileage records than ever before. Fisk Service at more than 125 Direct Fisk Branches—dealer and tire user alike are assured of the prompt attention and service. The Fisk Branch organization is the most complete and widespread in the whole country.

**BOUGHNER BROS.**

BIRMINGHAM

Fisk Branches in More Than 125 Cities

**Federal Inquiry or Railroad Strike?**

Faced by demands from the conductors, engineers, firemen and brakemen that would impose on the country an additional burden in transportation costs of \$100,000,000 a year, the railroads propose that this wage problem be settled by reference to an impartial Federal tribunal.

With these employes, whose efficient service is acknowledged, the railroads have no differences that could not be considered fairly and decided justly by such a public body.

**Railroads Urge Public Inquiry and Arbitration**

The formal proposal of the railroads to the employes for the settlement of the controversy is as follows:

"Our conferences have demonstrated that we cannot harmonize our differences of opinion and that eventually the matters in controversy must be passed upon by other and disinterested agencies. Therefore, we propose that the proposals and the proposition of the railway be disposed of by one or the other of the following methods:

1. Preferably by submission to the Interstate Commerce Commission, the only tribunal which, by reason of its accumulated information bearing on railway conditions and its control of the revenue of the railway, is in a position to consider and protect the rights and equities of all the interests affected, and to provide additional revenue reasonable, or, in the event the Interstate Commerce Commission cannot do so, and that we jointly request Congress to take such action as may be necessary to enable the Commission to consider and promptly dispose of the questions involved;
2. By arbitration in accordance with the provisions of the Federal law" (The Newlands Act).

**Leaders Refuse Offer and Take Strike Vote**

Leaders of the train service brotherhoods, at the joint conference held in New York, June 1-15, refused the offer of the railroads to submit the issue to arbitration or Federal review, and the employes are now voting on the question whether authority shall be given these leaders to declare a nation-wide strike.

The Interstate Commerce Commission is proposed by the railroads as the public body to which this issue ought to be referred for these reasons:

No other body with such an intimate knowledge of railroad conditions has such an unquestioned position in the public confidence.

The rates the railroads may charge the public for transportation are now largely fixed by this Government board.

Out of the \$200,000,000 received by the railroads from the public nearly one-half is paid directly to the employes as wages, and the money to pay increased wages can come from no other source than the rates paid by the public.

The Interstate Commerce Commission, with its control over rates, is in a position to make a complete investigation and render such decisions as would protect the interests of the railroad employes, the owners of the railroads, and the public.

**A Question For the Public to Decide**

The railroads feel that they have no right to grant a wage premium of \$100,000,000 a year to these employes, now highly paid and constituting only one-fifth of all the employes, without a clear mandate from a public tribunal that shall determine the merits of the case after a review of all the facts.

The single issue before the country is whether this controversy is to be settled by an impartial Government inquiry or by industrial warfare.

**National Conference Committee of the Railways**

- |  |   |   |
|--|---|---|
| <b>ELISHA LEE, Chairman</b>                        | <b>G. H. EMBERTON, Gen'l. Mgr.</b>            | <b>N. D. MAHER, Vice President</b>              |
| <b>F. R. ALBRIGHT, Gen'l. Mgr.</b>                 | <b>Great Northern Railway</b>                 | <b>Norfolk &amp; Western Railway</b>            |
| <b>ALBION GARDNER, Vice President</b>              | <b>C. H. SWING, Gen'l. Mgr.</b>               | <b>JAMES BUSEY, Gen'l. Mgr.</b>                 |
| <b>L. W. BALDWIN, Gen'l. Mgr.</b>                  | <b>Philadelphia &amp; Reading Railway</b>     | <b>Drewes &amp; Bon Grand Railway</b>           |
| <b>C. L. BARBO, Gen'l. Mgr.</b>                    | <b>E. W. GRIGG, Gen'l. Mgr.</b>               | <b>A. G. BRYER, Gen'l. Mgr.</b>                 |
| <b>New York, New Haven &amp; Hartford Railroad</b> | <b>Chesapeake &amp; Ohio Railway</b>          | <b>Transylvania Lines West</b>                  |
| <b>E. H. OGDEN, Gen'l. Mgr.</b>                    | <b>A. C. ST. LOUIS, Vice President</b>        | <b>W. L. SEDDON, Vice Pres.</b>                 |
| <b>Seaboard Railway</b>                            | <b>St. Louis &amp; San Francisco Railroad</b> | <b>Illinois &amp; Michigan Canal</b>            |
| <b>B. E. COTTER, Gen'l. Mgr.</b>                   | <b>W. W. KOLINS, Gen'l. Mgr.</b>              | <b>A. J. STONE, Vice President</b>              |
| <b>Wabash Railway</b>                              | <b>Albion, Toledo &amp; Santa Fe Railway</b>  | <b>St. Paul &amp; Northern Pacific</b>          |
| <b>F. E. McMASTER, Gen'l. Mgr.</b>                 | <b>Washing &amp; Lake Erie Railway</b>        | <b>G. S. WAID, Vice Pres. &amp; Gen'l. Mgr.</b> |
| <b>West Coast Railway</b>                          |   | <b>Grand Central Lines</b>                      |

**TIRES**

**Absolutely Puncture-proof**

**GUARANTEED 6,500 MILES**

Buy your tires direct from our factory and save from 20 to 30 per cent.

These tires are twice as thick through the tread as ordinary makes and are a combination of the best brands, such as Goodrich, Goodyear and Firestone. They are strongly built and re-inforced by a new, superior method making a finished product unequalled for hard usage and pleasure purposes. Used by individuals and business concerns.

Don't delay, but order today and do away with your tire troubles. To introduce in your territory we offer the following prices:

30x3	\$ 8.50	34x4	\$17.25
32x3	8.75	35x4	17.50
30x3 1/2	10.75	35x4 1/2	22.50
32x3 1/2	14.25	37x4 1/2	24.50
31x4	14.25	35x3	27.50
33x4	16.25	37x3	27.50

All other sizes also furnished.

TERMS—Cash with order. Make remittance by certified check, draft or P. O. money order. When ordering be sure to state whether clincher, quick detachable clincher or straight side bead is desired.

For five days we offer 5 per cent discount where two or more tires are ordered at one time.

**PIQUA TIRE & RUBBER CO.**

PIQUA, OHIO

State of Michigan, the Circuit Court for the County of Oakland, do hereby certify that the following is a true and correct copy of the will of the late FRANK M. SMITH, deceased, as the same appears from the records of said court, to-wit: That the said FRANK M. SMITH, deceased, was a resident of the County of Oakland, State of Michigan, at the time of his death, and that the said will was duly admitted to probate in said court, and that the same is a true and correct copy of the original as the same appears from the records of said court.

FRANK M. SMITH, deceased.

Witness my hand and the seal of said court, at Detroit, Michigan, this 15th day of July, A. D. 1916.

WALTER W. SMITH, Judge of Probate.

**DR. W. HONEY & CO.**

FOR THE COUGH AND BRONCHITIS

The New "Spathagite" Orchid