

At HOME BEAUTIFUL

Flowers and Shrubby
Their Care and Cultivation

CARING FOR THE ROSES

By BEN E. REXFORD.
Shower, spray, dip, wash, scrub: do any and all these things to keep down the insect enemies. Don't let bugs pasture on your plants.
There are several methods of protecting roses at the north. One is to draw the bushes together into an small space as possible, and wind it with straw.
This is a very good method when the work is well done, but unfortunately, few persons are able to do it well, therefore I advise that it be not done by an amateur.
One objection that can be urged against it, even when the work is done to perfection, is that the strain is likely to attract the attention of mice, and they make it their nesting place, they are pretty sure to gnaw all the bark off the bushes.
All things considered, laying the plants down flat on the ground and covering them with dry earth or leaves seem to be the best and safest plan for the amateur to follow. It is certainly the easiest one.
The bushes should not be laid down until the cold weather seems likely to set in. I have known great injury done by covering them too early in the season.
If the bushes are old, and have stiff canes, it will be a difficult matter to bend them flat without breaking, or at least, cracking them. To facilitate this part of the work, and make it possible to do it safely, I would advise digging out some of the soil on the side of the plant toward which it is to be bent. This will allow you to tip the bush over without making any abrupt bends in it.
Such large growing varieties as the climbers, like Queen of the Prairie, Baltimore Belle, and the Rambler, with canes half an inch or more in diameter, cannot be handled with safety. A slight bend makes a fracture in them, and this is inadvisable to avoid. These sorts I would make into compact bundles as possible, leaving them in an upright position, and either wind with straw or protect with corn stalks.
Tea roses and the Bengal and Chinese varieties, comprising the so-called ever-blooming class, can be wintered over doors, at the north, if given the very best of protection, but nine times out of ten they lay flat. These I would take up, and pack in boxes of straw, precisely as the farmer "heals in" late purchased fruit trees.
Then set them in the cellar where the temperature is so low that growth will not be encouraged. Here they will generally be safely wintered. Keep them quite dry. Generally they will not need watering after going into cold storage. If the place in which you put them is dark, all the better.

Take no chances in fighting insects. Fight to exterminate!

HINTS FOR FLOWER LOVERS

By JOSEPHINE DEMARR.
Make bird houses and thus secure the presence and esteem of these active insect destroyers. Also protect every fond and try to keep a few about the home place.
Two perennial people should be found in every garden—the Iceland poppy and the oriental. It is better to sow them where they are to grow, for they do not transplant readily, on account of their long taproot.
Do not neglect to examine the currant and gooseberry bushes to look for the white eggs of the currant worms, the larva of the currant saw fly. If you find any, dust the leaves top and under sides, with finely powdered heliothorus, when the foliage is wet, or put a heaping tablespoonful in a gallon of water and apply.
Just as soon as the lilac and other spring flowering shrubs have some blossoming, prune them. Cut back to a strong eye or shoot, preserving the characteristic form of the shrub.
The petunia is one of the most accommodating of plants. It takes root easily, grows rapidly and makes a fine show in a hurry, even if planted late in the spring. If you have a corner you don't know what to do with, prepare the soil carefully, scatter petunia seeds upon it; water with a fine hose and watch the seeds grow all the big weeds, the little ones will be smothered by the rapid growth of the flowers.
Plant canna one to two feet apart, depending altogether if they be dwarf or the tall growing sort. They like very rich soil and plenty of water during the growing season. A mulch of straw manure will help to conserve the water that is given them. Cut off all the seed pods as they form.
If you want brilliantly colored and cutting shaped flowers, plant some Florida or Mexican summer blooming bulbs. Don't set them out until settled weather, for they are tender.
The Japanese are still working to perfect the Impogon or moon flowers. They are most satisfactory annual vines. They are great feeders and demand cultivation during the growing season. They come in many beautiful colors and shades, striped, marbled, striped, spotted and blotched.
Don't let the weeds get a foot high until the blue flowers, even if none are pulled out.
The amateur must learn to trim ruthlessly. Plants that grow too close together never do well. Pinch off all the suckers from fruit and ornamental trees.
The Dutch bloomers are slow at rising and you want their best part trench them in a far corner of the garden. When they are well ripened put them in a paper bag and keep them in a cool place until fall.

PLANTING OF TREES

An Attractive Planting of Trees
Before planting a plan is necessary. Have some idea of the result you hope to achieve, and stick to that idea.
It is a mistake to plant too thickly, as rank-growing shrubs have to be cut down every year. Some trees can be successfully transplanted if they have been properly prepared by root pruning. But it is the work of specialists, not for the amateur to do.
Evergreens ought always to be planted around a permanent home.

WOLVERINE NEWS BRIEFINGS

Marquette.—Fire, which attacked the Heiligler block, was placed under control after damage estimated at \$72,000 had been done. The chief investigator was D. M. Nason, clerk.

Saginaw.—A road bed was held in Richmond township. Sixteen inmates of the county jail were used in the work.

East Rapids.—Chester P. Dow has just celebrated his ninety-fifth birthday anniversary. He is in perfect health.

Accenting Vogue of Rich Materials



Although one may choose almost any shape in hats, the progress of the season has given precedence to certain styles. Hats inspired by the Puritan model are many and smart. Small high-crowned shapes with narrow curving brims followed naturally in the wake of the Puritan, and have developed into brilliant millinery combinations rich brocades or velvets, in covering the shape, with fur in narrow bands outlining the brim edge and crown. The small turban has blossomed out in wintry materials (velvet and fur and other rich stuffs) in styles more varied than even and is the acme of dash and grace.
Trimming remains simple, either for these chic small hats or in the wider-brimmed shapes. And it seems that every one strives for novelty in it. Either the flower or feather must be something new and strange—and beautiful—or it must be oddly placed. An example of this is shown in two views of a dress that which are given in the photographs reproduced here.
The model is made of velvet shirred in one circular piece, to cover the upper brim and side crown. The top crown is a small cast puff of the velvet, and the underbrim has a plain velvet facing, the shape falls to a sharp point at the front and flares upward at the back, where the brim widens.

THE NEWEST REMEDY FOR BACKACHE, RHEUMATISM AND DROPSY

Kidney, Bladder and Urine Affections have many causes. When the kidneys are weak or diseased, these natural filters do not cleanse the blood sufficiently, and the poisons are carried to all parts of the body. There follow depression, aches and pains, headache, dizziness, irritability, headache, chills and rheumatism. In some people there are sharp pains in the back and long distressing attacks of neuralgia. A heavy sediment in the bladder and sometimes stricture. Dropsy. The urine is sometimes foamy and offensive. The kidneys are the filters of the blood. When the urine is affected, the poisons are not carried to the bladder, and the urine is not cleaned. The blood is not purified, and the poisons are carried to all parts of the body. This is the cause of the ailments mentioned. It is the duty of the physician to find out the cause of the ailments, and to give the patient a remedy that will cure the disease. Dr. Pierce's Great Peppermint Cure is the only medicine that will cure the ailments mentioned. It is a simple, natural, and safe medicine. It is made of the best ingredients, and it is the only medicine that will cure the ailments mentioned. It is the duty of the physician to find out the cause of the ailments, and to give the patient a remedy that will cure the disease. Dr. Pierce's Great Peppermint Cure is the only medicine that will cure the ailments mentioned. It is a simple, natural, and safe medicine. It is made of the best ingredients, and it is the only medicine that will cure the ailments mentioned.

Don't Suffer Longer

and allow yourself to become grouchy, upset, nervous and depressed. These conditions usually indicate a disordered digestive system, which, if neglected, may lead to hard to remedy. Remove the disturbing elements from your digestive organs in good working order by taking

BEECHAM'S PILLS

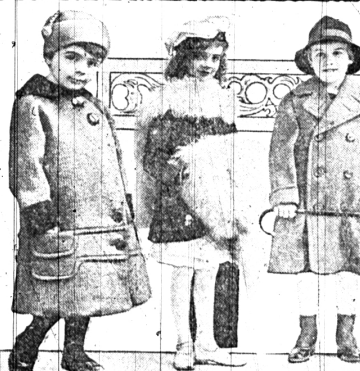
They gently stimulate the liver, act on the bowels, tone the stomach—purify the blood and regulate the system. Their benefits are far-reaching and marked by women at such times when nature makes special demands upon their vitality. They act promptly and safely.

The next time you feel low-spirited and out of sorts, take Beecham's Pills. Their sure, mild, thorough action will

Give Quick Relief

Special Directions of Value to Women are within Every Box Sold by Druggists throughout the world. In Boxes, 10c, 25c.

Bespeak Comfort for Small Wearers



The outdoor garments made for small girls and babies in the winter time are first designed for warmth. Great essential in their care of and after that they achieve what measure of grace and style the material and the season's modes will allow. Simplicity is the keynote, but a little shorter than in previous seasons, of very heavy close-woven woolens. Dark blue is a favorite color for the winter, but there are many other colors, distinct checks and a few crossbars. They are double-breasted, with ample collars that may be rolled up about the neck and ears. A very good model is that shown in the picture, which provides large but inconspicuous patch pockets for the convenience of the little wearers. A boy cut for a little girl, with a cap to match, is pictured, with collar and cuffs of blue, and a very heavy wool-knitted material and is soft and warm. The stitched belt, shaped to include pockets, reflects a similar treatment on the belt and undergarments. With cap to match, which may be pulled down over the ears, a trim, smart outfit makes the younger look as comfortable as her feel.

For the little miss who has arrived at the dignity of going out to parties, pretty coats are made and children's dresses are designed to re-enforce them. While Iceland furs are not common for the little girl, the most best choice for her are the little gray squirrel sets. There are several other furs suited to children, and all of them are intended for the little miss to wear up to

There is no place for the would-be peacock who butts in.

Was Marie Ky-Stendy's a Change of Habit?
Theresa nothing has being ready when opportunity knocks.

To keep clean and healthy take Dr. Pierce's Pleasant Pellets. They regulate liver, bowels and stomach—Adv.

Sad Placids.
A minister who had resigned from his parish was making his farewell call on a friend at the home of one of his parishioners who sent her the girl down to the parlor to enquire of the minister's age, a few minutes later the minister returned to receive him. After a few of the customary remarks about the weather the girl called to the minister—
"I'll tell you we're to have the sad pleasure of burying you."

Insulted the "Copper."
Through the burg a thief with policeman laid a little child by the hand.
A mortally looking woman passed before them for a moment. Then, in a sudden burst of sympathy she laid over the child and kissed her.
"Poor little one! I'm sorry to see you!" she said, as she turned to receive him. After a few of the customary remarks about the weather the girl called to the minister—
"I'll tell you we're to have the sad pleasure of burying you."

"Find the child, woman!" started the policeman angrily. "I didn't call at all. She says you did!"

Only Once.
"Do you see the man?"
"Yes. I see the man."
"What is he doing?"
"He is blowing his fingers, blowing up his nose, blowing to get a wig that his wife took at him in astonishment and took there, and he looked over two chairs, took down the lace curtains and made a rush for the kitchen."
"But has the man come away all of a sudden?"
"The man was hunting for a collar button and picked up his wife's necktie, and took it in an attempt to look for his wife's necktie. Look of husband, that is, his wife's necktie, to look for his wife's necktie, but he will not put it on, and the wife will not put it on, and the wife will not put it on."

For House Wear.
While linen modified middies with collars and cuffs of cord, and just a little smocking on each side to support the necessary fullness will be worn in the house, what the smocked stitching and collar and cuffs may be of lazoni or drift bide, pink or lavender. A dainty negligee gown made in pale blue or white and of the nainsook with half sleeves and a belt of three narrow pink ribbons braided together. Val becomes an insert used with dainty empire waists in blue, pink and green on each side. Another narrow pink blouse has a smocked edge, the lace curtain to be for the next three days, but he will not put it on, and the wife will not put it on, and the wife will not put it on.

A Powerful Physique

Is a valuable asset, but—

Strength of body must be combined with a healthy, active mind, to make for success.

It is well established that both body and brain are nourished and rebuilt daily from food—each taking up the particular elements required.

Grape-Nuts

FOOD

made of wheat and malted barley, supplies all the rich nutriment of the grains, including the vital mineral elements necessary for building stout bodies and active brains.

Grape-Nuts food not only supplies rich, well-balanced nourishment, but is delicious and easy to digest.

"There's a Reason"

Sold by Grocers everywhere.