

## RESIDENCE PARK

Big Steam Shovel Being Used in Excavating for Island and Other Improvements in North End.

These are busy and active days in Birmingham. Woodward avenue is opened and closed with great regularity. Water pipes, drains and storm sewers are being sewed up in our main artery with promptness and dispatch. Maple avenue, too, has gracefully submitted to several major operations.

All right, doctor. And with all this preparation for our new paving to engage the attention of our populace and visitors, we must not overlook another big improvement in the north end of the village.

We present our readers today with a large illustration of Closser Brothers' giant steam shovel at work in the meadows of Residence Park.

This big machine was brought from Detroit, and in the picture is shown at work digging the lagoon channel, west of the new island in the park.

The island when completed will be surrounded by the divided waters of the River Rouge.

The island will be approximately 400 feet long and 100 feet wide and the water ways each side will be from twenty to thirty feet wide, and bordering the river on each side new roadways will be built.

Directly south of the island, after the waters have been brought together under a pretty little concrete bridge, the meadows will be excavated and a lake or pond created.

This will add to Birmingham another beauty spot for the gratification of our citizens and the many tourists.



Closser Brothers' Giant Steam Shovel in Lagoon, Residence Park.

### CARD OF THANKS.

We wish to thank our many friends and neighbors for their kind assistance and beautiful floral offerings during the illness and death of our dear mother. MR. AND MRS. W. J. SPICER. GENEVIVE E. YOUNG.

A new sign and drop box have been installed at the Ideal Home Laundry. You can have your clean collars by the dozen for 30 cents.

## TIMELY WARNING FARMING SCHOOL

The Village Sewer Committee Warns Property Owners Regarding Sewer Connections.

We are spending several thousand dollars for sewer systems. These are something new for Birmingham, and it is just as well that the property owners and tax payers know now that these sewers must be operated under fixed rules of the State Board of Health. Do not arrange for any connections to the new sewers or existing drains without permit from the Village Clerk. Many improperly installed connections will be broken as soon as the new sewers are in commission.

A FEW IMPERATIVE RULES. Roof drains and cistern overflow cannot be connected to the sanitary sewer.

Cellar drains must have an approved trap. Private garage drains must have trap equal to the 12x4 inch "Cellar Trap" made by the American Sewer Pipe company.

Permit must be secured at the Village Hall for any sewer connection. Work must be inspected before being covered up.

A call at the Village Hall will save you a lot of time, and the tax payers' money.

RICHARD B. HEWITT, Chairman.

C. C. Fulford will have an auction of farm tools and household goods, tomorrow (Saturday) on the premises on the "Eleven and one-half-mile Road. M. H. Bunt is master of ceremonies.

Over 1,000 Boys Took the Examination to Represent Their County at the State Fair School.

Earning the right to represent one's county at the farming school at the state fair isn't so easy as it looks. If you don't believe it, just sit down, take your pencil and attempt to write the answers of the 20 questions below. If you were born and brought up on the farm, you probably can answer 50 per cent of them. If you have lived all your days in the city, 25 per cent will be a good average.

Yet more than a thousand boys in Michigan wrote upon these questions recently and the great majority answered them intelligently. The questions were prepared by Thomas M. Sattler, commissioner of schools of Jackson county, and were submitted at the annual eighth grade examinations in every county in Michigan. That boy will be chosen to represent each county who was most perfect in his answers to these questions and to the regular questions given for the eighth grade test.

1. The questions were: (a) Where is the Agricultural College located? (b) Where is the University located?
2. Name five varieties of potatoes.
3. Name three farmers' organizations.
4. What are the months for planting (a) corn, (b) wheat, (c) rye?
5. Name five varieties of corn.
6. Name the five leading crops of your locality.
7. What is a flaxseed tester?
8. What do you understand by buttermilk?
9. Name five varieties of apples.
10. What is meant by crop rotation?
11. Name five breeds of poultry.
12. Name five breeds of sheep.
13. Name five breeds of horses.
14. Name five breeds of beef cattle.
15. Name five breeds of dairy cattle.
16. Name three kinds of clover.
17. What is ensilage?
18. Describe the process of selecting seed corn.
19. Name parts of a plow.
20. Name five benefits of the state fair to the farmer.

### BAPTIST CHURCH NOTES.

EASTERN TIME  
Sunday morning, preaching 10:30.  
Bible school at 11:45 a. m.  
Juniors at 3:30 p. m.  
B. Y. F. at 7:00 p. m.  
Evening preaching service at 8:00.  
Wednesday evening prayer meeting at 8:00.  
All are welcome.

G. L. CONLEY, Pastor.



The Chambers Bungalow.

The Eccentric, with pardonable idiosyncrasy, is also showing here with a few of the many houses that are now being built in Residence Park and on other property in the north end.

We show pictures of the Chambers bungalow at Euclid and Woodward avenues; also two of the houses built by McMichael & Co., one just north of the new home of H. George Field which he purchased this spring of McMichael & Co. and has just moved into; also a stucco colonial dwelling on Ravine Road.

Mr. Miner, our leading and popular grocer, is also building an attractive novel house on Fernside.

Frank Standart is finishing a new home on Birmingham Heights, and in the same neighborhood there is in process houses for T. B. McCutcheon, J. C. Christy and A. F. Moore.

The last mentioned three are on Oak street, the northern limits of the village.

There is no boom in Birmingham, but the alert are discounting the future and getting their houses in order.

McMichael & Co. report many other jobs on their draughting boards and C. E. Jones, the owner of Residence Park, reports a brick inquiry for both homes and lots and quite a few sales to Detroit and Pontiac parties.

### Thirty-six for 25 Cents.

Dr. King's New Life Pills are now supplied in well-coated glass bottles, containing 36 sugar-coated white pills for 25c. One pill with a glass of water before retiring. Light, laxative, dose. Easy and pleasant to take. Effective and positive in results. Cheap and economical to use. Get a bottle today, take a dose tonight—your constitution will be relieved in the morning. 36 for 25c, at all drug stores.—Adv.

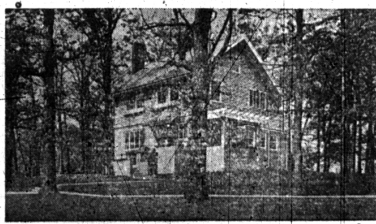
### U. P. Church Notes.

SERVICES AT BIRMINGHAM. Sabbath School at 10:00 o'clock. Preaching services at 11 o'clock. Y. P. C. U. at 6:30 p. m. Preaching on Sabbath evening at 7:30 o'clock.

SERVICES AT TROY, MICHIGAN. Sabbath School 1:30 p. m. Preaching services at 2:30.

All are cordially invited to attend heat services and your presence will be appreciated.

WILSON ERID, Pastor.



On Brookside Drive, Birmingham.

### "COONING" FLOWERS

In our exchanges we read the annual complaints of the "ateating" of flowers from front yards. Is it not a strange anomaly that a "chick" should love flowers, or that a lover of flowers would "steal" them? It has been said that the way to end the annual raiding is to have more flower gardens. Usually it is the men or women, boys or girls with no flowers of their own who climb fences and enter door yards to gather the blooms. If they were growing a few plants of their own they would not think of stealing from others. So there is hope. The present "clean-up movement" and the "plant-a-flower-garden movement" will, in time, eliminate the flower and blossom "thief." Education will overcome this evil, just as it is overcoming many others. All the laws in the world would not be as effective in ending this annoyance as would one little bed of flowers cultivated by the culprit. In fact, the more laws, the more piquant will seem the fun of breaking them. Many of us know what it is to "coon flowers." As youngsters we thought it great fun. But we know better now and it was not the law which taught us. What was it? Think it over.

Word reaches us that the work done by Emeline M. Mitchell at the Caseville G. A. R. memorial services last Monday was very satisfactory to the committee and the big audience gathered at the hall to enjoy the program. Miss Mitchell gave five readings and each one was received most heartily.



On Ravine Road, Birmingham.

Phone 65

Phone 38

# Pineapple!

Place your order with us now for Sliced Hawaiian Pineapple—"Hunt's Supreme" brand—the acme of quality, for delivery in September. Prices very low—Quality very high.

## THE HOME GARDENER

Will supply you at our store with freshly-picked Head Lettuce, Spinach, Asparagus, Young Beets, Green Onions, Cucumbers, Carrots, Bagas, String Beans, Green Peas, Rhubarb, New Cabbage, Tomatoes, Celery, and

Northern-Grown Strawberries and Fruit Powdered Sugar.

## CHEESE—our hobby

—Prime old New York, Mild Michigan, Pimento, Philadelphia Cream, Roquefort, Nippy, Camembert, Edam, Limburger and German Cream.

Tzar Coffee at 35c per lb. has no equal

## MINER GROCERY CO.

"THE HOME OF GOOD THINGS TO EAT"

## WE HAVE

Some extra good vacant lots, dwellings and farms for sale cheap. List your property with us for quick sale.

Continental Insurance Co. has largest surplus.

## Oakland Realty Co.

"Nothing But Bargains"

## It's a Day of Specialties

And mine is INSURANCE. I insure your LIFE, making your dependents comfortable; your HOME to enable you to rebuild when destroyed; your AUTO against theft and fire, and liability for personal or property damage; Residence Burglary; Rent Insurance; Accident and Sickness. Eight old reliable companies. Call Phone 333J for interview. Office 121 Willis Street. R. E. Griggs, Insurance Specialist.

## The Store of Quality

We want you to make this store your Food-Supply Headquarters because we know the high quality of our merchandise, our low prices, and our splendid store will completely satisfy you. Our years of practical experience is your guarantee that in our store your food wants are cared for in the most proficient manner.

## Inspect Our Tea Department

Most people drink tea for its flavor and refreshing qualities. If you see one of these you will like our Tea Department extra well. It is strictly fresh, all pure tea, and its goodness is a test you will appreciate.

## COFFEE

For a better breakfast use "Pathfinder" Coffee. Good Coffee makes the breakfast. Just the same as a poor cup spoils a good one. When you select "Pathfinder" Coffee for your daily breakfast and beverage, you are choosing a brand that is absolutely without a superior at the price. Try a pound. Buy "Pathfinder" and be happy. Only 30c per pound.

Choice Fresh Fruit and Green Vegetables a Specialty

## SHOES

After having a good many calls for Shoes we finally decided on a line of Men's and Boys' Work Shoes that have a reputation for quality. These Shoes are on our shelves and ready for your inspection. Try us before buying elsewhere. We have the kind you want, and, best of all, the right price.

Cash paid for Butter and Eggs. Phone 222 when your Grocery Supply is low.

## H. G. SPENCER

& CO.

"The Big Staple House"

## POPULAR PLOWS



## The Oliver 0-98 and 0-99

are especially popular where new ground is being opened up—and in sections where stones prevail, the steel beam plow takes the lead, its great strength being a very desirable feature where it is subjected to severe strains and severe usage.

Fitted with reversible wings and slips, with solid shares as extras, if desired. Joints or hanging coulters, as well as rolling coulters can be supplied on these two plows. The usual Oliver quality—the best.

## H. B. PARKS

## To Keep Your Teeth a Lifetime

You who wish to preserve your teeth—keep them solid and free from discolorations—remember this: Be attentive to your teeth! Keep the shreds of food from soft of the crevices—thoroughly massage your food and avoid as much as possible soft and poorly-cooked food—use the brush regularly and with an up-and-down motion—

and use that most efficient tooth cleanser and preservative—Nydenta Cream

Prevents fermentation arising from the decomposition of food particles—hardens the gums, protects, whitens and polishes the enamel of the teeth—sweetens and perfumes the breath. It removes the secretions and membranes of the mouth thoroughly germ proof.

This is not a mere tooth paste—it is a real tooth preservative.

In collapsible tubes—clean and economical—25c the tube.

When we had a chance to get the exclusive selling agency for Nyal Family Remedies we jumped at it. They are known among all druggists as the highest quality line on the market, and are prepared by a great firm of manufacturing chemists, famous for 60 years.

## Dr. E. Mather's

JNO. D. RIKER, M. D. Practice limited to EYE, EAR, NOSE, THROAT, PONTIAC, MICH.

Has removed from 46 Warren Avenue East, Detroit, to 228 South Gratiot Avenue Mt. Clemens, Michigan Where he will receive patients.

E. Mather, M. D., will make Chronic Diseases and Bathe a specialty. 30c a pass the door.

There is No Question but that indigestion and the distressed feeling which always goes with it can be promptly relieved by taking a small dose of REXALL Dyspepsia Tablets before and after each meal. 25c a box. Charles J. Shan.