

# BIRMINGHAM ECCENTRIC.

Devoted to Our Own Locality—We Labor for Its Interests

THIRTY-SEVENTH YEAR. NO. 36.

BIRMINGHAM, OAKLAND COUNTY, MICHIGAN, FRIDAY, JANUARY 8, 1915.

WHOLE NUMBER, 1906.

## SIGMA TAU HOP THREE FINE HOUSES NOW BUILDING

Sorority Girls Hold Charming Dance In J. and S. Hall of New Year's Night.

New Year's night over fifty couples, guests of the Sigma Tau Sorority, passed a most enjoyable evening. In fact, it was generally conceded to be the most brilliant social function of several seasons.

Most of those present resided in or about Birmingham, but Detroit, Ann Arbor, Cleveland, and the eastern colleges were also represented. The atmosphere of the gathering was pre-eminently youthful, but a fair sprinkling of the younger married set gave the necessary conservative tone.

The decorations were carried out in true holiday colors, red and green, and the hall was a mass of evergreen. From the center, festoons of evergreen boughs were artistically draped to all corners of the hall, while placed at frequent intervals about the hall were Christmas trees. Holly wreaths and Sigma Tau emblems of red and white were hung upon the walls.

Sigma's orchestra rendered the entire program in a very likable manner, and during the entire evening not a dull moment was felt. Being a sorority party, the girls had entire charge, even to making out the program.

The decorations were carried out in true holiday colors, red and green, and the hall was a mass of evergreen. From the center, festoons of evergreen boughs were artistically draped to all corners of the hall, while placed at frequent intervals about the hall were Christmas trees. Holly wreaths and Sigma Tau emblems of red and white were hung upon the walls.

Punch was served during the evening by Misses Virginia Hartwell and Durea Davenport. Patronesses of the evening were Mrs. W. D. Clitz, matron of the sorority, and Mrs. N. T. Shaw.

Two feature dances which added much to the gaiety of the evening, were the popular confection dance, and the favor dance. The favors being characteristically the Sigma Tau flowers.

Though the dancing started at 8:30 with a grand march led by Dr. and Mrs. N. T. Shaw, it was 1:15 before the last measures of "Home Sweet Home" were reluctantly trotted.

Several returned home only for a change of costume, while some of the less ambitious partyed business by spending the day at home.

**Painful.** Rheumatism is a painful and exhausting, especially in the chronic stage. To get quick relief when these ailments come on, Kemel's Pain-Killing Compound is the thing needed. It is a clean and pleasant but very penetrating remedy that enters the pain at once, it reaches the seat of trouble. It is effective also in sprains in the bowels, dysentery, sick stomach, cholera, and bus. Price 25c. Sold by Cobb & Jennelle.—Adv.

**ST. JAMES CHURCH.** The service on Sunday, January 17, will be a joint service of the members of the Bible schools and the congregation. Parents of the children are asked and urged to be at the church promptly at 10:30 and accompany the children from the Sunday school to the church for the service at 10:45. Special lanterns with the full order of service have been prepared and the service easy to follow. It certainly will be great to have all the children, parents and members of the congregation together, so let it all plan to be on hand and on time. The service will be a long one.

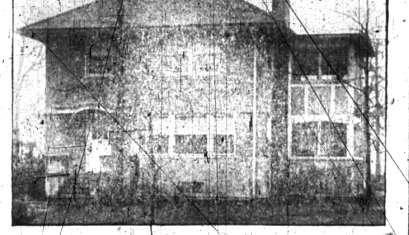
## BIG BULL FIGHT

Birmingham Boy Sees One In Juarez, Mexico, Wouldn't Give Ten Cents To See Another.

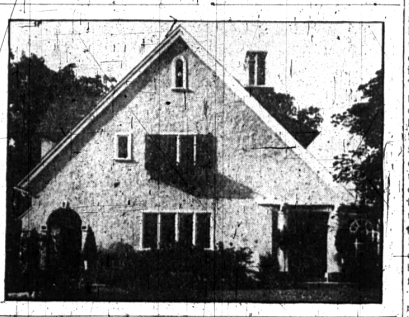
Eugene Heth, son of Job Heth of our village, and by his fellow aviators named "Wild Bill," tells a story of his witnessing a bull fight and other interesting bits of news from Mexico. In his description of this fight he draws a large circle, or ring, showing the bull ring proper where the maiming, killing and brutal scenes are enacted, is 125 feet in diameter and surrounded by tiers of seats from close down front to away back, 20 tiers. He shows the blinds, about five feet high, where the fighters can dodge in and be safe when Mr. Bull gets too hot after him.

While there is not much being said about "Wild Bill," he expects to do some scouting for the Villa side of the Mexican fighters. It sure will be some scouting for the Mexicans to begin dodging bombs from flying machines all the same, like the English dodging the German bombs.

El Paso, Tex., Dec. 21, 1914.



where Mr. John McMichael, the architect and builder in charge of the work for Mr. Jones, has built many fine, moderate priced houses. "The houses I will build in Residence Park," said Mr. McMichael, "will be as good as the picture or better."



four bed rooms finished white enamel and birch, tiled bath rooms and sleeping porch. Will be finished about March 15.

House number two is a gabled end house, all stucco. Dormers on each side help out the second floor, allowing four ample bedrooms, sleeping porch and big bath room. Large, well lighted living room across the front of the



first floor is entered from ample vestibule. Through French doors the porch and dining room are entered. Much attention has been given to the detail of these rooms to produce harmony and symmetry of line. The third house of this group will front on Ravine road and give out upon a splendid view of the elevated plateau to the east. In this house the living

## WE OFFER

Beautiful Fat Mackerel, about 2 lb. each, lb. 30c  
Lake Superior Salmon Trout, per lb. 15c  
Nepselem Sock-Eye Salmon, per lb. 15c  
Booth's Sardines, in mustard 20c  
Booth's Sardines, in oil 20c  
Booth's Sardines, in tomato sauce 20c  
Kipped Herring, per can 15c, 18c, 20c  
Soused Mackerel, per can 15c, 20c  
Baby Mackerel, per can 15c  
Baby Norwegian Sardines, per can 15c  
Rainbow Norwegian Sardines, per can 20c

Skinner Norwegian Sardines, per can 15c  
Nansen Norwegian Sardines, per can 15c  
Moonlight Norwegian Sardines, per can 15c  
Nemo Portuguese Sardines, per can 15c  
Large can Domestic Sardines, 15c 2 for 25c  
Domestic Sardines, in oil, per can 5c  
Mustard Sardines, per can 10c  
Blue Sea Young, per can 15c 2 for 25c  
Minned Sea Clams, per can 15c  
C. & B. Mackerel, in tomato sauce, per can 25c  
C. & B. Fresh Mackerel, per can 25c

Phone 65 Phone 38  
**Let Us Do Your Fishing for You**  
Fishing through the ice is cold work, breeds chilblains, cold in the head and disappointment.  
After the Holiday Season we all wish to remove "fowl" taste with food of "tang."

**MINER GROCERY CO.**  
"THE HOME OF GOOD THINGS TO EAT"

**WE HAVE**  
Some extra good vacant lots, dwellings and farms for sale cheap. List your property with us for quick sale.

**Oakland Realty Co.**  
"Nothing But Bargains"  
JNO. D. RIKER, M.D.  
Practice limited to EYE, EAR, NOSE, THROAT, PONTIAC, MICH.

**The Quality Shop**  
A Special Sale  
Women's and Misses' Coats

**See Window for Prices**  
Our policy is to never carry over goods from one season to another. We will begin each season with entirely new merchandise.

**MEN'S \$1.00 NECKWEAR**  
79c  
**The Quality Shop**

**NOTICE TO SOUTHERD TAXPAYERS**  
For the purpose of receiving taxes I will be in the following places: Franklin, Carrin's store, Jan. 4, 1915; Stolk store, Jan. 5, 1915; Southfield Town Hall, Jan. 6, 1915; First National Bank, Birmingham, Jan. 7, 1915. I will be at home Fridays until Jan. 10, 1915. Hours, between 9 a. m. and 3 p. m. The 4 per cent fee will be added to all taxes received after Jan. 11, 1915. THOS. R. BRIDGES, Treasurer.

## How Can One Man Milk 25 Cows Per Hour?

By Using the **Hinman Milker**

It reduces the cost of the operation very decidedly. It is very economical, costing from \$1.00 to \$1.50 every year—and that is for rubber mouth-pieces and pump valves.

The average man can handle three machines to best advantage, milking three cows at a time and from 20 to 25 cows per hour, by using the extra milk.

**H. B. Parks & Co.**  
This is the day of the optimist. The "don't worry" man is a genial, smiling chap who looks forward to a bright future of health and happiness—and wealth, too, of course.

**Sour Stomach Makes a Sour Man**  
The pessimist is scorned. He is blamed for a surly and gloomy disposition and receives no sympathy for his merd forbodings.

**Nyal's Dyspepsia Tablets** will help that man.  
They contain pepsin and diastase in scientific proportions. He can eat what he likes and what the pepsin fails to digest the diastase will take care of.

**Cobb & Jennelle**  
Lambert & Lowman's White Pine and Red Spruce J. ALLEN BIGELOW SAYS SO

**Dr. Geo. Burt F. Clarke** Osteopathic Physician  
Graduate A. S. O., Kirksville, Missouri

**Dr. Geo. Burt F. Clarke** Osteopathic Physician  
Graduate A. S. O., Kirksville, Missouri

**Dr. Geo. Burt F. Clarke** Osteopathic Physician  
Graduate A. S. O., Kirksville, Missouri