

# BIRMINGHAM ECCENTRIC.

Devoted to Our Own Locality—We Labor for Its Interests

THIRTY-SEVENTH YEAR—NO 50.

BIRMINGHAM, OAKLAND COUNTY, MICHIGAN, FRIDAY, APRIL 9, 1915.

WHOLE NUMBER, 1919.

## NEW SCHOOL SITE

Has Been Selected by School Board Believed Will be Approved by All Interested.

The School Board has selected a site for the coming High School, which should meet the approval of all. It is on the south side of Maple avenue, west, being the property of Miss Anna Parks, Messrs. John Horthle and John Heth. The frontage on Maple avenue is 245 feet and 206 feet on Chester and running south to Martin street, and being the same size as the present High School site. This site contains three houses and the options secured are as follows:

Anna Parks, \$7,000.  
John Bortle, \$3,500. Mr. Bortle to retain and remove the house.  
John Heth, \$4,500. Mr. Heth to retain and remove the house.

The School District, at the last regular meeting, directed that a committee of 15 be appointed to select a school site. This committee as well as the School Board believed that \$10,000 would be the maximum price that the district would vote to pay for the site, and that the very limited in their choice. The consequence was that the selection was not pleasing to all the members of the committee and the decisive vote against the selection by the citizens, and the strong vote for the Town Hall block nearly double the cost show that if the people will not approve of a location at a considerable distance from the center part of the town; and that they are willing to pay a fair, although a much larger price, for a site more centrally located.

The Town Hall block would cost at least \$700 more than the above Maple avenue site and some parcels could be obtained only by condemnation proceedings, judging from the present stand of some of the owners. It is no larger, is on a side street and on uneven ground, as the points against it in comparison to the one under discussion.

Options have been secured from the owners of the Maple avenue property for a short time and the District will be asked on April 14 to vote on this site and for \$5,000 in bonds to pay for it. Ten thousand dollars in bonds was voted during the winter for a school site and \$9,500 has been sold at four and a half per cent, bringing \$40,000 above par. This is a good bargain, as many municipalities have been having trouble in selling bonds for five per cent.

It is hoped that all will vote favorably on this site, as options can be had for only a short time. Should it be voted down, a sight not so slightly or convenient may have to be selected, and at a greater cost. Remember, if the people fail to pick a site, the Township Boards of Royal Oak, Troy and Bloomfield assembled, have the power to designate the site and you will have no voice in the location or the price.

Several old people living in the Town Hall site are averse to selling their homes and going into a new locality at their age, and on the site now offered the owners are all willing to sell, making it no hardship to anyone in leaving a home surrounded by ties and traditions.

Remember the date, April 14. The polls will be open from 4 p. m. to 8 p. m.

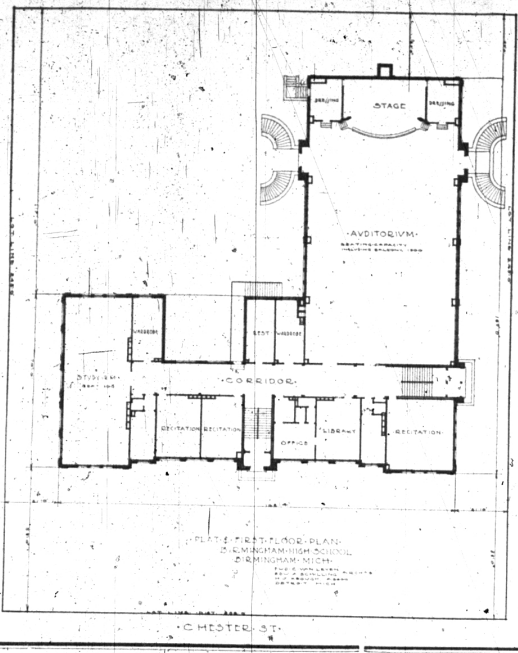
## Your Child's Cough is a Call for Help.

Don't put off treating your child's cough. If not only says their throat, but often leads to more serious ailments. Why risk? You don't have to. Dr. King's New Discovery is just the remedy your child needs. It is made with soothing, healing and antiseptic balsams. Will quickly check the cold and soothe your child's cough away. No odds how long the cough or how long standing. Dr. King's New Discovery will stand 15 days guaranteed. Just get a bottle from your druggist and try it—Advt.

## THOSE RESIDENCE PARK SIGNS

Allice, when she first opened her eyes in Wonderland, could have been more surprised and pleased than was ye editor when the other evening just at nightfall, he roamed abroad and got in range of the electric lighted signs on the construction office of John McMichael at Residence Park. Like a phantom structure it gleamed at the edge of the ravine. Its sides reflected the light until the whole building seemed to glow. The effect it produced in the main, because of the manner of painting, but is heightened by reason of the carefully thought-out scheme of reflector installed by Homer Leonard, our popular and leading electrician.

If you have not seen the wonderfully pretty sign, just take a minute, some evening and do so. The lights are on every night at sunset and stay so until 10 o'clock, when they are automatically extinguished by "clockwork." The lights not only illuminate the whole building, but particularly the signs and they brighten that part of Woodward avenue exceedingly.



## BE CAUTIOUS! 100 DELEGATES

Are We Making a Mistake in the New Water Mains for Woodward Ave., Read and Think

General Fire Extinguisher Co., Detroit Mich., March 29, 1915. Geo. H. Mitchell, Editor, Birmingham Eccentric, Birmingham, Michigan.

Dear Sir: We note there is to be some 4 inch pipe installed on Woodward avenue. A fire stream requires about 250 gallons of water per minute. Henry Darcy's formula, "Friction of Water in Pipes," shows a pressure loss in one thousand feet of new pipe as follows:

Size of Pipe	Loss in Feet	Approx. Cost
4 in.	2.5	\$400.00
6 in.	1.5	\$250.00
8 in.	1.0	\$150.00

Many of our smaller cities are reaping the harvest of old small water mains. Port Huron has had several serious losses, owing to small water mains reducing the pressure. With others' experiences before us, should we permit any 4 inch pipe to be laid in our village?

Yours very truly, RICHARD R. HEWITT.

## A Sluggish Liver Needs Attention.

Let your liver get torpid and you are in for a spell of misery. Everybody gets an attack now and then. Thousands of people keep their livers active and healthy by using Dr. King's New Life Pills. Fine for the stomach, stop the dizziness, constipation, biliousness and indigestion. Clear the blood. Only 25c at your druggist's.—Advt.

## OBITUARY.

ALMERIA DEVORE BEATTY  
Almeria Devore, only daughter of John and Mary Devore, born July 20, 1840, in Warfordsburg township on the shore of Elizabeth Lake. Her parents were pioneers and life long Christians, their home being the stopping place of the preachers of those days. She was united in marriage in 1860 to James Beatty, of Bloomfield, and made her home, with the exception of a few years, on the farm where she died. Four children were born to them, Edwin, deceased; Mrs. Dora Seaman, of St. Petersburg, Fla.; Mrs. Margaret Wiley and Will Beatty. The husband and father died in 1888, a keeper of the faith. Two brothers, Henry and James Devore, passed away a number of years ago. She became a Christian in her girlhood and her faith never wavered. Besides her children she leaves many relatives and friends to mourn her loss.

## Rheumatism Yields Quickly to

You can't prevent an attack of rheumatism from coming on, but you can stop it almost immediately. Sisson's Liniment gently applied to the sore joint or muscle penetrates in a few minutes to the inflamed spot that causes the pain. If soothed the hot, tender, swollen feeling, and in a very short time a relief that is almost unbelievable until you experience it. Get Sisson's Liniment for 25c of any druggist and have it in the house against colds, sore and swollen joints, sunburn, scratches, and like ailments. Your money back if not satisfied, but it does give almost instant relief.—Advt.

## HIGH GRADE MILK

Produced at Cranbrook Farm by Teberlin Tested Cows Under Best Sanitary Conditions.

Recently a lady in Detroit, who was operated on at one of the hospitals, was in need of the most nourishing and pure food possible to secure. Her husband knew of the efforts at Cranbrook Farm, Birmingham, to produce the highest possible grade of milk. He arranged with Mr. Price to send two quarts each morning by D. U. R. This was continued for a short time, when it became a burden to go to the D. U. R. station at Detroit daily, so the shipment was ordered stopped. Detroit milk of a high grade was tried for one week. During that week's trial the Detroit milk absolutely disagreed with the lady to the extent that Mr. Price was requested to resume the shipment of the two quarts daily, which was gladly done.

You can have the same pure quality of milk delivered to your address each day, as many other families in Birmingham are doing. This milk is not only beneficial to convalescents and infants, but very essential to growing children and valuable to adults, as it is produced from tuberculin tested cows under the most favorable conditions, by those who know how. Delivered to you at 8c per quart. Please phone or write C. P. PRICE, Cranbrook Farm, Phone 254.

## NOTICE OF SPECIAL MEETING

A special meeting of the legal voters of School District No. one, fractional, of the Township of Bloomfield, called by the Board of Trustees of said District, will be held at the High School in said District on Wednesday, April 14, 1915, at four (4) p. m., for the purpose of submitting to the legal voters of the said District a proposition to purchase the following described property for the sum of fifteen thousand dollars (\$15,000.00), to be used for a site for a new High School. A parcel of land bounded north by Maple avenue, east by Chester street, south by Martin street, and west by the Presbyterian Manse and a lot owned by John N. Heth, now owned by John N. Heth, John H. Bortle and Anna S. Parks. Also to vote on a proposition to loan five thousand dollars (\$5,000.00), and to issue the bonds of the said district therefor, bearing interest at the rate of four and one-half per cent per annum, payable semi-annually, said bonds to be in the denomination of \$500.00 each and to mature as follows: \$1,000.00 due June 10, 1926, and \$1,000.00 due each and every year thereafter to and including June 10, 1930. Said funds to be used for the purpose of buying above mentioned property. The polls of said Special Election will be open four (4) hours. C. H. CARTER, Sec'y. Dated April 2, 1915.

## Makes 61 Feel Like 16

I suffered from kidney ailment for two years," writes Mrs. M. A. Bridges, taking Foley Kidney Pills about 10 months ago. I am 61 years of age and feel like a 16 year old girl." Foley Kidney Pills invigorate weak and ailing kidneys, relieve backache, rheumatism and bladder trouble. Sold everywhere.—Advt.

## SPECIAL SERVICES

We expect the following men to preach at the United Presbyterian church April 12-13: Monday evening, Rev. Wm. H. Robb, Birmingham; Tuesday evening, representatives of Presbytery; Wednesday and Thursday evenings, Rev. Homer B. Henderson, Detroit; Friday evening, Rev. J. R. J. Milligan, D. D., Pontiac; Saturday evening, Rev. A. B. Reid, Cleveland, O. Sabbath morning at 11 o'clock, communion services. We extend a cordial invitation to members of other churches and especially those not connected with any church, to unite with us in these services. WILSON RIFE, Pastor.

Whom to Send For. "Whom to send for?" "A couple of men are going to get the new aeroplane," said the owner of the guard. "I will send for the colonel!" "Send for the sergeant!" "Send for the sergeant!"

## WE HAVE

Some extra good vacant lots, dwellings and farms for sale cheap. List your property with us for quick sale.

Continental Insurance Co. has largest surplus.

## Oakland Realty Co.

"Nothing But Bargains"

## DID YOU HEAR ABOUT THE FIRE?

Yes. Any insurance? Yes! loss fully covered. In one of R. E. Griggs' old reliable companies, and soon new buildings will rise on the blackened ruins better than the old. The period of cyclones is here. Better get ready for them, too. Same about that new automobile. The companies can stand for the collision or loss of a life better than you can. See Griggs at 321 Wilts Street. Phone 3333.

## Extra Specials

Every Day

Every day you'll find money-saving Specials here—Specials that you want. High-grade, staple merchandise, absolutely clean, at the lowest possible prices consistent with quality. Do your buying at a clean, bright—the lightest, best-equipped Grocery anywhere.

## That Coffee

Don't pay high prices for "Coffee." PATHFINDER is far ahead of any 40c Coffee today. Try a pound at once. You'll like it. The great Coffee has the flavor, right body with strength, and a price that suits everyone. Only 30c lb.

## Potatoes 50c per bush

NICE STEELE'S RED APPLES

In our Fruit and Vegetable Department you will find everything complete—Apples, Oranges, Grape Fruit, Bananas, Lettuce, Celery, Parsnips, etc. These items are all fresh. In fact, if there is anything in Grocery line you want, and want the best, leave your order at this store.

## Inspect Our Canned Goods Dept.

You cannot find a loophole here—everything of high-grade from top to bottom. When in need of good things to eat Phone 222—we'll do the rest.

## H. G. SPENCER & CO.

"The Big Staple House"

Phone 65 Phone 38

Macaroni and Spaghetti

## Our Prime Old N.Y. Cheese

Are a combination to make a gourmand smack his lips. Welch Rarebit is delicious with Our Cheese.

## Did You See Grape Fruit in Our Window

Mediums, per dozen, 35c  
Large size, 5c each; per dozen, 50c  
Mammoth, 10c each; 3 for 25c  
OH, SO RICH AND JUICY!

Oranges Most delicious Navels at the height of their goodness for the season. All kinds for the Lenten Season. Also Salt Fish of all sorts.

Tzar Coffee Is generously good—at the price unapproachable—rich, mellow drink.

## MINER GROCERY CO.

"THE HOME OF GOOD THINGS TO EAT"

## POPULAR PLOW

Some extra good vacant lots, dwellings and farms for sale cheap. List your property with us for quick sale. Continental Insurance Co. has largest surplus.

## The Oliver O-98 and O-99

are especially popular where new ground is being opened up—and in sections where stones prevail, the steel beam plow takes the lead, its great strength being a very desirable feature where it is subjected to severe strains and severe usage.

Fitted with reversible wings and slips, with solid shares as extras, if desired. Joints or hanging coulters, as well as rolling coulters can be supplied on these two plows. The usual Oliver quality—the best.

## H. B. PARKS

## Extra Specials

Every day you'll find money-saving Specials here—Specials that you want. High-grade, staple merchandise, absolutely clean, at the lowest possible prices consistent with quality. Do your buying at a clean, bright—the lightest, best-equipped Grocery anywhere.

## That Coffee

Don't pay high prices for "Coffee." PATHFINDER is far ahead of any 40c Coffee today. Try a pound at once. You'll like it. The great Coffee has the flavor, right body with strength, and a price that suits everyone. Only 30c lb.

## Potatoes 50c per bush

NICE STEELE'S RED APPLES

In our Fruit and Vegetable Department you will find everything complete—Apples, Oranges, Grape Fruit, Bananas, Lettuce, Celery, Parsnips, etc. These items are all fresh. In fact, if there is anything in Grocery line you want, and want the best, leave your order at this store.

## Inspect Our Canned Goods Dept.

You cannot find a loophole here—everything of high-grade from top to bottom. When in need of good things to eat Phone 222—we'll do the rest.

## H. G. SPENCER & CO.

"The Big Staple House"

**Dr. E. Mather**  
Has removed from 20 Warren Avenue East, Detroit, to  
228 South Gratiot Avenue  
Mt. Clemens, Michigan  
Where he will receive patients.

**JNO. D. RIKER, M. D.**  
Practice limited to  
EYE, EAR, NOSE, THROAT  
PONTIAC, MICH.

**FOLEY'S KIDNEY CURE**  
Cures Kidneys and Bladder Ailments  
Charles J. Shanley