

HOME SITES!

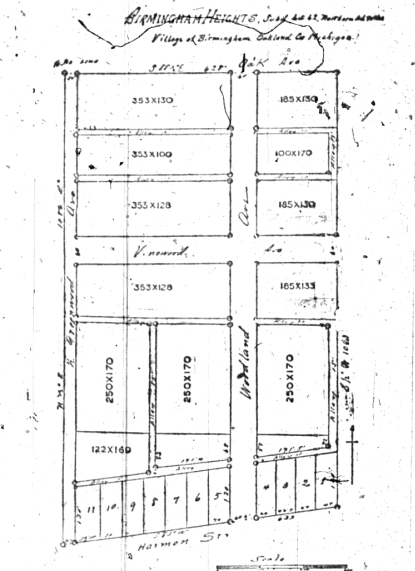
NEW "WHITE MOURNING"

REAL ESTATE EXCHANGE

OF WHITEHEAD & MITCHELL

If you are planning a Country Home, convenient to the City, let us call your attention to one of the best locations for this purpose between Detroit and Bloomfield Hills. Our new

Birmingham Heights



For those who wish to observe a period of mourning and are confronted by objections to all-black apparel, or find it not practical for daily wear, there is now the alternative of all-white or white and black in combination. In the smartest shops and at the leading costumers one may order mourning in either black or white. Crepe, which is the recognized insignia of mourning, has been used with wonderful effectiveness, especially in millinery. Black crape hats and veils, for first mourning, have been duplicated exactly in white crepe. This is an exquisite fabric and since the designers began using it they have achieved some new and wonderfully beautiful effects not possible in other materials. It is not merely a whim of fashion, but has brought about the adoption of the new "white mourning." It is a change of sentiment with regard to the meaning of mourning apparel. One need not think very long to conclude that white mourning is meeting a demand for something more than merely the trappings and the suits of woe. It is less oppressive than black, in fact, it is all-sensational. Those who are in mourning will not be obliged in the future to confine themselves to black or to white or even to combinations thereof. For mourning fabrics are woven in gray and in certain lavender shades. But crepe is most effective in black or white. Tailored suits of white serge made up with exquisite neatness and faultlessly cut are the favorites for mourning. Worn with either black or white hats and veils they cannot be excelled for elegance. A fad of the hour is to wear black low shoes with white hose or high white shoes with their tailored gowns.

For white mourning veils all made of chiffon or Brussels net or other veiling materials bordered with crape. These bordered veils are often draped on the hats in such a way as to provide their only trimming. They are nearly always thrown back off the face or draped to hang from the back of the shape which is almost invariably made entirely of crape.

One of the new, elongated shapes, with medium wide rolling brim, is shown here covered and trimmed with white crape. The veil of chiffon, bordered with crape, is arranged to be worn either over or off the face. There are almost no trimmings on the most elegant mourning hats except those that are made of crape. Hoses and lilies are favorites and are wonderfully beautiful.

A new shape suggesting a polo-neck is pictured here, made of black crape, except for the facing, which is pure white in a rich soft quality of the material. This white facing redeems the hat from somberness and makes it a brilliant piece of millinery. Besides white next the face is most becoming to every woman.

The coarse-meshed silk nets, bordered with bands of crape, three inches wide are having a strong vogue and are in the neighborhood of fashionable veils. Nevertheless they are less becoming than chiffon. But veils are seldom worn under the face that this item may be ignored. Nets are very strong and durable.

JULIA BOTTOMLEY.

REDUCING THE DOUBLE CHIN **ATTRACTIVE STREET GOWN**

Simple Methods, Persevered In, Will Speedily Go Away With Objectionable Feature.

One of the most objectionable features is the double chin. This can be remedied in one month by the following exercise: First, soap the under part of the chin with pure soap, and plenty of it. Then throw the head back till the face looks up to the ceiling. Then press down the under chin with the thumb while at the same time make the lower chin move back and forth against the thumbs. It will take some practice until you will soon find the way to cause the movement of the fat part of the chin. This will strengthen all the muscles and at the same time it will diminish the fatty cells. The soap does this by cutting the fat from the skin.

The exercise can be endured and even enjoyed if you have a scratchy phone and take the exercise by the music. I get my graphophone on in the rear garden and make my physical culture out in the open air. Besides the exercises I had in the college classes I have discovered many new ones. Whenever there is excess fat to be kept on till you find a motion that will cause a movement of that fat, then work—Heath.

Red-Heeled Slippers

It was only natural that the incoming of effective little frocks should have brought with them the high-heeled slippers of the Louis XVI period, with their immense buckles in front and their slashes of red behind. There is a kind of heel, too, which is used on these high slippers, and it makes the foot look about three inches shorter than it is.

One word that it was impossible to walk in them if one had not witnessed the ability of women to get along in yard-wide skirts and Spanish heels that put them on stilts. We have learned during the last three years that there are few limitations to that which women can do in the name of fashion. If ever those Louis heels are adopted by the majority of American slipshoemakers, women will wear heels that put them on stilts.

Plan Gifts Now.

If only womanhood could plan her Christmas gifts in the summer she could save a pretty penny and much worry. The shops now are full of attractively colored flowered ribbons that are selling for a song—just the sort of thing you will be looking for later on of which to make handkerchiefs, chiefes, workbags, needleboxes, collar protectors, pin books and dozens of other trinkets that are sure to come to mind with the thought of Christmas gifts.

To Clean White Kid Shoes.

For cleaning white kid shoes, get a clean white cloth, soak it in gasoline, then dip the cloth in powdered pumice and rub with all the force you can move, then allow shoes to dry in the air, but not in the sun. Always use the chalk and gasoline together, as gasoline alone will in time cause the kid to turn yellow. Do this in a cool place away from heat or artificial light and rub in the hot sun.

Subdivision!

Is right in the popular and fashionable district, only a block from Woodward Avenue, with 15-minute electric car service, 10-cent fare, and half an hour ride to city limits.

City Water, Cement Walks, Electric Light, Good Drainage, 600 feet above the Detroit River, and altogether ideal sanitary conditions.

Consider the rapid rise in Birmingham real-estate values for the past three years; no feverish boom, but a steady, reliable increase in values, due to the building of beautiful homes for the better class of home folks. Let us tell you about our easy terms and small payments—then make an investment. You can't lose.

Short distance from the select private school—Bloomfield Hills Seminary—becoming popular among particular people.

Twelve large building sites, varying in size from 100x169 feet to 250x338 feet; soil a gravelly loam, fine for gardening, just what will appeal to you. Larger than a Village Lot, but small enough to dispense with the services of a care-taker.

Only 12 miles from the Detroit City Limits.

Restricted to Residences.

Numerous Beautiful homes have been built in the immediate vicinity during the past year.

Write us or call for terms and prices.

Whitehead & Mitchell

Birmingham Michigan

No. 1. Fine residence practically new, 7 rooms, bath, toilet, furnace, electric light, lot 112 ft. front, 300 ft. deep, good barn, city water, 3 blocks to electric. Terms to suit.

No. 2. Vacant lot in Shiel addition fronting a Woodward and electric. Fine building site cheap.

No. 3. Vacant lot on Willow avenue, 100 ft. front, 300 ft. deep, city water, fine lot of berries.

No. 4. One thousand dollars cash and balance on easy terms will buy 6 acres of excellent land on electric in Royal Oak village. Excellent for planting, 1000 berries, 1000 grapes, pretty little lake from which \$250 worth of ice is harvested last season, ten cents and forty minutes to city hall, Detroit. Don't delay.

No. 5. Here it is! Nine-room two-story cottage just finished, in fine location, electric light, bath, toilet, furnace, electric light, five minutes walk from electric, good neighborhood, high and dry, \$3,600. There now!

No. 6. Desirable Maple avenue residence, rooms, bath, toilet, furnace, electric light, 140 ft. front, 200 ft. deep, blocks from electric, fine locality, price right and terms easy.

No. 7. Eight rooms, 1 1/2 story cottage, hot water heater, bath, toilet, hot and cold water, electric light, two blocks from electric and \$2,900 cash will buy it.

No. 8. Fine lake cottage, 1 1/2 story, 4 rooms, bath, toilet, hot and cold water, electric light, in most beautiful portion of the lake region of Oakland county. Fine bathing, boating and fishing, 1/2 mile from lake, lot of that tired feeling and patch up hours nervous. Wait a minute, here's the price that will make you think it fits your pocketbook. Go down in your jeans and buy it for \$1,600.

No. 9. Two and one-half story residence in Maple avenue, 12 rooms, furnace, electric light, good barn, electric light, shade, about half an acre of land with fruit and the desirable qualities of one of the best homes in Birmingham. Two blocks from electric. Look it over, come across with a reasonable price for cash and you'll see us help you get it.

No. 10. Seven-room furnished, latest improved, bath, toilet, furnace, hot and cold water, electric light, good big lot, nice barn, shower, no better value in town, 3 blocks from electric, 2 blocks from school, nice, new, \$25,000 for \$3,500. Take it over or on easy terms and be happy.

No. 11. Modern two-story frame dwelling with all the conveniences in Rochester, Mich. lot 60x120 with good barn, electric light, furnace, gas, insured for \$2,000, three blocks from electric, \$1,100 above the mortgage will buy it.

No. 12. Now listen. Prettiest little farm in town, just outside village of Rochester, 18 acres, 3 blocks from electric, 14 acres of berries, 3 buildings including a chicken house and fine modern dwelling, with city water and all conveniences such as bath, toilet, furnace, electric light, (ideal place for city man with idea regarding a little farm on the side, and can't miss the price if you mean business. No? Well, you just ask Whitehead and see.

No. 13. Here's another. House and store in prettiest little town, village three miles from electric. An acre and a quarter of good land. Six room two-story brick house with all conveniences in farm building, and the terms are so easy that they won't worry you. Just come over and see. Just scrape together enough to buy a small general stock and there you are.

No. 14. Right in the center part of the village and valuable for business or residence. Lot 43x50, good comfortable, all right, but a little more than rent, only 100 per month, but bless your heart, the land without any house at all is worth more than we are asking for it. If you're from Missouri, you are just the fellow we want. Come on and we'll show you.

No. 15. Lot in Campbell's subdivision, 60x120, new house, nice neighborhood, city water, furnace, etc. \$2,300. Terms so easy that you can't help say for it. You just pay a little more than rent would come to. Then you would soon have a home of your own.

No. 16. Nice little home on Willis street, seven-room house, electric, city water, good lot, 70x120, and \$1,425 above the little mortgage will buy it.

No. 17. Good house and lot on Highland street, just outside village of Highland Park, house insured for \$3,000. Will exchange for small farm property of \$2,000 will buy it.

No. 18. Farm of 147 acres Oakland township, 135 cleared, 15 acres oak timber, house and barn, price \$45 per acre, cash, balance on easy terms. \$2,000.

No. 19. Good farm of 154 acres in Oxford township, 70 acres under plow and balance in young growing timber, two barns, city water, half mile from D. U. R. station, and barn, all kinds of soil. Will exchange for house or will sell for \$16 per acre or easy terms.

No. 20. Sixteen acres in high state of cultivation, good 8-room house which needs little expenditure to make modern improved barn and chicken house, wire fences, good drainage, pretty little wood lot six acres, fine maple, walnuts, etc. Birmingham one mile, quarter mile to little River Rouge, ten minutes (auto) to electric. The price is—may we won't tell you right out in public. If we did every body would ask it; at once, but it's really what I think is a well, you just ask Whitehead.

No. 21. Seven-room bungalow, vitrified brick veneer, 1 1/2 stories, toilet, bath, hot-water furnace, hot-water coil, city water, electric light, Cabot shingle stain, all new and up-to-the-minute improvements, particularly, heat construction of A1 material throughout and located in the new Birmingham Heights, 2 blocks from electric on Woodward.

No. 22. A really good 700 foot farm of 120 acres lying on both sides of the Flint line, electric light, good barn, five acres and five other people and first class building, flowing well furnished farms, best new Page wire fence, 4 acres good orchard, cow barn for 23 acres, full cement floor and stores school 10 rods, churches and stanchions, 1 mile, 12 acres of beautiful woods, hook and line, no waste land, no foul air, price is low enough to be very attractive and 25 per cent of purchase price will sell it.

No. 23. Modern two-story home in the very best residence portion of the village, about 1 1/2 acres of land, 13 rooms, 2 1/2 stories, electric light, bath, fruit, everything to make it comfortable and convenient, all buildings comparatively new, will exchange for good farm of 100 acres or more, with a mile or two of the electric, either line, or will sell for \$7,000 on easy terms.

No. 24. Clear Lake property, 300x300, sheet piling just put in, 65 fine shade trees, buildings, ice house, boat-house with water channel, fish houses, tool shed, building worth \$2,000. Fast place along the shore for summer residence. Go and see it and then submit costs.

No. 25. Two story frame dwelling, modern in every particular; bath, toilet, furnace, electric light; built 1911; finished in natural wood shade, fine shrubbery; two blocks from electric, in best residence section; lot 83x93; \$4,000, terms easy and quick, we present print it. Just ask Whitehead.

No. 26. Fine farm of 120 acres just over the county line in Redford township, section three mile from electric, five miles from Detroit; 12 acres orchard; three buildings; ten room house; electric, good well; drainage, good wire fence. Will be cheap at \$200 an acre, but—whichever \$125 per acre will buy it. Now don't blame us if you sold when you get around to ask this.

No. 27. Thirteen hundred dollars cash will buy a nice home a block from the electric; two stories, eight rooms, bath, toilet, furnace, electric lights; barn, 18x24, with cement floor; lot 60x120, in residence neighborhood. The balance of the purchase price can be paid in installments on long time terms. You couldn't do better than to investigate this.

No. 28. It seems hardly probable, but it is barely possible that you do not see anything in this column to suit you. Well, listen! Just come and pay \$25 dollars down and select your lot from those not already sold in Birmingham Heights, and pay the balance in monthly payments on the easiest terms you could ask. City water, electric light, cement walks, and the most desirable building sites in beautiful Birmingham. Then build a house to suit your own tastes and be happy. Come on! Well! help you!

No. 29. One of the very best and most productive farms in this locality, 150 acres; well fenced, no waste land, 5 buildings, 2 houses, larger residence on a road front, only forty rods from electric; entire farm under high state of cultivation, excellent drainage, miles from Detroit, 2 1/2 from Birmingham. If you want one of the best and cheapest bargains on our list, just ask about this number.

No. 30. If you could lease a good farm of about 70 acres for \$2,000 per year and begin to reap for things, what? Well, here you are: 16 acres of good electric, fine cement barn, 1,000 peaches, rolling land, large pit, first class gravel, a little over 100 rods from electric. Hook 7500, gravel pit will pay for the whole outfit in two years. Fast.

No. 31. Ten minutes walk from electric, cement walk from Woodward, 3 2/3 acres with small buildings, you would want to build anyhow, and the buildings are not considered in the price.) Just outside village limits, first location, \$3,000.

No. 32. Pretty little place half mile outside the village on electric, fine grounds, best example of landscape gardening with trees, shrubs, etc. 7 1/2 acres right among the high priced Bloomfield Hill district, with River Rouge bordering the premises.

No. 33. Five acres vacant on Willow avenue, just outside corporation, 15 minutes walk from electric, fine building, site for planting, will sell all for \$500 per acre or any part of it to suit. Will sell 60x120 for \$200 per front foot, up, according to location.

No. 34. Excellent farm of 150 acres on new State road, 21 acres orchard. In addition, buildings insured for \$5,000, only 3 1/2 miles from electric in the best location if desired. Farms in this locality have sold within the past six months for \$200 per acre cash, but you can buy this one for much less.

No. 35. Now, here's a farm for \$75 per acre and of course you will say it must be a poor one to sell for that, in these times of high prices. Now just to show you how easily you can be mistaken, listen to this: One hundred and sixty acres, fine, productive land with good localities, complete buildings, barns rebuilt and a mile of new wire fences, 2 miles from electric and about 10 miles from city, 40 acres heavy loam and 40 lighter sandy loam. Pretty little creek runs through the lovely meadows. There's a new case, but you would be interested. Detroit 15 miles.

No. 36. If you could lease a good farm of about 70 acres for \$2,000 per year and begin to reap for things, what? Well, here you are: 16 acres of good electric, fine cement barn, 1,000 peaches, rolling land, large pit, first class gravel, a little over 100 rods from electric. Hook 7500, gravel pit will pay for the whole outfit in two years. Fast.

No. 37. No. 38. No. 39. No. 40. No. 41. No. 42. No. 43. No. 44. No. 45. No. 46. No. 47. No. 48. No. 49. No. 50. No. 51. No. 52. No. 53. No. 54. No. 55. No. 56. No. 57. No. 58. No. 59. No. 60.