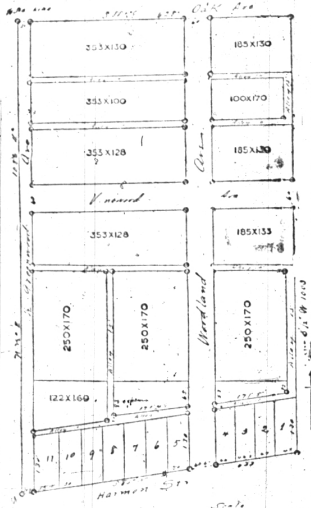


HOME SITES!

If you are planning a Country Home, convenient to the City, let us call your attention to one of the best locations for this purpose between Detroit and Bloomfield Hills. Our new

Birmingham Heights

Birmingham Heights, Subd. of Woodward Ave. Village of Birmingham, Oakland Co., Michigan.



Subdivision!

Is right in the popular and fashionable district, only a block from Woodward Avenue, with 15-minute electric car service, 10-cent fare, and half an hour ride to city limits.

City Water, Cement Walks, Electric Light, Good Drainage, 600 feet above the Detroit River, and altogether ideal sanitary conditions.

Consider the rapid rise in Birmingham real-estate values for the past three years; no feverish boom, but a steady, reliable increase in values, due to the building of beautiful homes for the better class of home folks. Let us tell you about our easy terms and small payments—then make an investment. You can't lose.

Short distance from the select private school—Bloomfield Hills Seminary—becoming popular among particular people.

Twelve large building sites, varying in size from 100x169 feet to 250x338 feet; soil a gravelly loam, fine for gardening, just what will appeal to you. Larger than a Village Lot, but small enough to dispense with the services of a care-taker.

Only 12 miles from the Detroit City Limits.

Restricted to Residences.

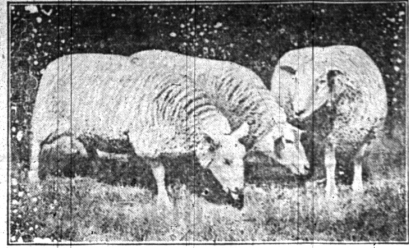
Numerous Beautiful homes have been built in the immediate vicinity during the past year.

Write us or call for terms and prices.

Whitehead & Mitchell

Birmingham Michigan

SHEEP TO CLEAN UP NEGLECTED PLACES



Typical Cheviot Sheep.

There should be a few sheep on every farm. It is always admitted that a few horses, or a few cattle, a few pigs and some poultry must be kept on every farm because they are necessary and economical—why not sheep? If the dog barks the sheep bays the dog. Perhaps, says a bulletin issued by the organization of Illinois Farmers' Institutes, the chief reason for not raising more sheep is that most people do not understand them but they are easily understood when one begins to deal with them.

A farmer in southern Illinois told the writer that his flock paid \$2.75 per cent in the investment. He said that the lambs each year sell for as much as the mother and cost only \$1.00. The mother will shear a single pound fleece that will sell for \$1.00, and this will pay for the keep of the ewe and the lamb. The average ewe will weigh 120 pounds, and at the end of the year will bring six dollars, a profit of 50 per cent on the investment. Sheep delight to clean up neglected places—in the potato patch, the pig lots, the stubblefield, fence rows and everywhere. In Minnesota it was found that out of 450 kinds of weeds there were only fifty kinds that sheep would not eat.

The best time to sell a sheep is when it is a lamb. If it weighs 100 pounds, is fat and has the quality, it will sell as a prime lamb at any season of the year. This is the popular weight for a market sheep, but must be fat. If it is not fat it will be discriminated against. Alfalfa hay and a little grain or corn makes a good ration for use in finishing lambs for market. The quality of a lamb is indicated by short legs, fine feet and clean, firm skin.

Male lambs should receive attention when from eight to eleven days old and most animals that the lambs will keep the sheep doing well. Enough is not gotten with the feed, even in summer, and this amount should be supplemented by all that the sheep can digest when given constant access to it.

SEVERAL SUMMER FEEDING PROBLEMS

Intelligent Provision Gives Substantial Advantages to Live Stock Farmer.

Although the question of summer feeding has become one of the most important in the country, so many farmers are convinced, there are many who, in my opinion, miss some of the main points altogether. An intelligent provision of summer feeding gives substantial advantages to the farmer.

Less land is used for pasturage and that of maintaining the growth and strength of the stock generally.

In other words a farm of 100 acres should yield as good results as one of 150 acres under the same winter feeding.

The problem of supplying summer fodder can easily be solved by the cultivator of any part of the pasture land which is saved. Young stock will then obtain uniform growth while by the same means a dairy will keep its milk production up to the mark.

Should the whole season prove favorable for pasturage much of the fodder raised for summer feeding may be sold in the market or the dairy may be enlarged.

A silo is a good auxiliary in providing for either summer or winter feeding and there are various methods along the line of intensive farming which will enable owners of cattle to use less land and at the same time attain the results desired.

A crop of rye can be cut for hay. Keep Soil in Fine Tilth. In dry, hot weather keep the surface of the soil in fine tilth. Hoe and rake as soon as the ground dries after a rain, and never under any circumstances allow a hard crust to form.

Forming Fruit Beds. Many farmers who have been growing fruit for years, do not know that the apple and most other fruit trees form fruit buds in the late summer months.

REAL ESTATE EXCHANGE

OF WHITEHEAD & MITCHELL

The following is a partial list of Farms, City and Village Lots, and Real Estate generally which we have for sale. As our list is constantly changing, we request that parties will write us if they do not see what they want in this list.

- No. 1. Fine residence practically new. 7 room, bath, toilet, furnace, electric light, 112 ft. deep, 600 ft. deep, good barn, city water, 3 blocks to electric. Terms to suit.
- No. 2. Vacant lot in Bluefield fronting on Woodward and electric. Fine building site.
- No. 3. One of the best on the list. Bound to go soon. Two-story 7-room bungalow, bath, toilet, hot water, furnace, electric light, well side of street, cement walk, lot 50x120, one block from electric, everything new and modern. \$1,500. What do you know about that?
- No. 4. Vacant lot on Willow avenue, 100 ft. from 2nd St. deep, city water, fine lot of berries.
- No. 5. One thousand dollars cash and the balance on 10% note. Buy a acre of excellent lot in Royal Oak Village. Excellent for planting. Low bearing apple trees, plenty of land from which 200 worth of seed was harvested last season. Ten cents and 10¢ per acre for the lot. Detroit, Mich. 48104.
- No. 6. Here is a 10-room two-story cottage just finished, in fine location, lot 30x113, bath, toilet, furnace, electric light, everything new, very nice yard, good neighborhood, high and dry. \$2,500. Now!
- No. 7. Delightful Maple avenue residence. 2 rooms, bath, toilet, hot and cold water, 140 ft. front, 205 ft. deep, 3 blocks from electric, fine location, price right and terms easy.
- No. 8. Eight rooms, 1 1/2 story cottage, hot water, bath, toilet, hot and cold water, barn, lot 40x110, two blocks from electric and \$2,500 cash will buy it.
- No. 9. Fine Lake cottage, 1 1/2 story, 4 rooms, lot 50x110, with good barn, one of the finest locations on the most beautiful portion of the Lake region of Oakland county. Fine building, good location and fine view. Just the place to get out of the city and get into the country. Wait a minute, here's the price that will make you think it's just like your pocket book. \$1,500 in your hands and you'll be in it!
- No. 10. Two and one-half story residence on Maple avenue, 12 rooms, furnace, city water, good barn, electric light, fine view, all the modern conveniences of one of the finest homes in Birmingham. Two blocks from electric. Low price, convenient location, all necessary other for cash and you'll see us help you get it.
- No. 11. Seven-room bungalow, latest improved, bath, toilet, furnace, hot and cold water, electric light, good lot, no 60x110, nice barn, school, no better location in town. 2 blocks from electric, 2 blocks from school, nice, new, easy terms for \$2,500. Take it away on easy terms and don't tarry.
- No. 12. Modern two-story frame dwelling with all the conveniences in Rochester, Mich., lot 50x120 with good barn. 100 ft. front, 200 ft. deep, buildings insured for \$20,000, three blocks from electric and \$1,100 above the mortgage will buy it.
- No. 13. Now listed, just outside village of Birmingham, 19 acres, 3 blocks from electric, 140 ft. front, 205 ft. deep, including barn, chicken house and the modern 7-room dwelling, with city water and all conveniences such as bath, toilet, furnace, electric light. Ideal place for city man with ideas regarding a little farm on the side. It will ensure you that 12 acres and terms worth fighting you if you mean business. \$2,000. Well, you just ask Whitehead & Mitchell.
- No. 14. Here's another house and store in pleasant little country village 10 miles from electric. An acre and a quarter of good land. Six room two-story house with cellar, well, electric and barn, all in good shape. Fine chance for someone to make a good living and something besides in a country trade in rich farming community, and the price is only \$1,500. Get it now or you'll be sorry you don't. You and the price is only \$1,500. Get it now or you'll be sorry you don't. You and the price is only \$1,500. Get it now or you'll be sorry you don't.
- No. 15. Right in the center part of the village and valuable for business or residence. Lot 40x120, good comfortable old-fashioned house, will rent for \$25 per month but bless your heart, the price is only \$2,500. You can't get more than we are asking for it, if you're from Missouri, you are just the fellow we want. Come on and we'll show you.
- No. 16. Lot in Campbell's subdivision, 60x120, new house, nice neighborhood, city water, furnace, etc. \$2,500. Terms to suit. We can't help pay for you if you just pay a little more than rent would cost to. Then you would soon have a home of your own.
- No. 17. Nice little house on Willis street, seven-room house, cellar, closets, city water, good lot, 70x120, and \$1,425 above the little mortgage will buy it.
- No. 18. Good house and lot on Highland avenue in the bustling village of Highland Park, house insured for 1,500. Will exchange for small farm property.
- No. 19. Farm of 147 acres in Oakland township, 125 cleared, 15 acres oak timber, 200 rods from electric, with the lovely River Rouge winding among the fields the entire length of this property. Fine stone and cement fences (3), and ample barns. With sell any portion or all of it, to suit purchasers. It is impossible to properly describe this desirable property. You should see it to fully appreciate the beauty of the location. Write us to show you any, day, any time.
- No. 20. A classic among the farms. About 160 acres in the Bloomfield Hills district, 100 rods from electric, with the lovely River Rouge winding among the fields the entire length of this property. Fine stone and cement fences (3), and ample barns. With sell any portion or all of it, to suit purchasers. It is impossible to properly describe this desirable property. You should see it to fully appreciate the beauty of the location. Write us to show you any, day, any time.
- No. 21. Good farm of 164 acres in Orion township, 70 acres under plow and balance in young growing timber, two miles from Orion village, half mile from D. U. R. house and barn, all kinds of soil. Will exchange for horse lot in Royal Oak or Birmingham and will sell for \$45 per acre on easy terms.
- No. 22. Good cottage on Watkins street, full bath, toilet, electric, \$2,500. 50x115, some fruit trees, wants to sell had enough to let it go for \$1,500.
- No. 23. Fine new brick house, nine rooms on large lot on Pierce street. Bath, toilet, furnace, electric, gas, cement walk, two 100 ft. electric, \$2,500 above little mortgage, will land it and you'll have a home as good as any of you.
- No. 24. Twenty-five acre farm, 1 1/2 miles from Rochester electric, small house, barn, two sheds, excellent land in high state of cultivation, easy terms, \$1,000.
- No. 25. Nice cozy cottage on Purdy street, two blocks from electric, good large lot, in the location, cheap at \$2,500.
- No. 26. Here's another \$2,500 home on Willis street, eight feet front, 100 feet deep, seven rooms, good cellar, beautiful maples shade the premises, and it is true that you can't buy the house for the price asked. One of the many good things in our list, if not the best.
- No. 27. Forty acres on D. U. R., gravelly soil, good natural drainage, seven-room house, fine view, well can be obtained where desirable, 17 miles from Detroit, just the place for suburban living. Price \$2,500. If you are crazy about just now, and \$200 per acre will buy it if you come quick with cash.
- No. 28. Bullly little farm of 45 acres, 2 acres timber, 4 acres cleared, 1 1/2 miles from electric, good house and barn, delightful view location, right among the best priced ones and \$125 per acre with small payment cash and balance on land contract if desired. Think it over.
- No. 29. Here's a little farm for your life, 25 acres, extremely fine garden spot, 2 acres strawberries in bearing, 3 acres corn, 1 acre home improved, every convenience, all necessary outbuildings, new greenhouse, school and church within 10 minutes walk, bear about 100 acres of maple, one mile from electric. You can't find fault with this lovely place and you won't quarrel over the price when you see it over the premises.
- No. 30. (Yep, here's your chicken farm) seven and one-half acres on electric about 1/2 mile from Orion, 15 minutes walk from car, cement walk, fine cellar, bath, toilet, furnace, gas, electric light, bowling well, barn, chicken house, all the modern conveniences, all necessary outbuildings, new greenhouse, school and church within 10 minutes walk, bear about 100 acres of maple, one mile from electric. You can't find fault with this lovely place and you won't quarrel over the price when you see it over the premises.
- No. 31. Ten minutes walk from electric, cement walk from Woodward, 3 1/2 blocks from electric, 15 minutes walk from car, cement walk, fine cellar, bath, toilet, furnace, gas, electric light, bowling well, barn, chicken house, all the modern conveniences, all necessary outbuildings, new greenhouse, school and church within 10 minutes walk, bear about 100 acres of maple, one mile from electric. You can't find fault with this lovely place and you won't quarrel over the price when you see it over the premises.
- No. 32. Pretty little place half mile outside the village on electric, fine grounds, best example of landscape gardening in the city, 12 acres, 1 1/2 miles from Orion, all the modern conveniences, all necessary outbuildings, new greenhouse, school and church within 10 minutes walk, bear about 100 acres of maple, one mile from electric. You can't find fault with this lovely place and you won't quarrel over the price when you see it over the premises.
- No. 33. Five acres vacant on Willow avenue, full bath, toilet, furnace, gas, electric light, cement walk, fine cellar, bath, toilet, furnace, gas, electric light, bowling well, barn, chicken house, all the modern conveniences, all necessary outbuildings, new greenhouse, school and church within 10 minutes walk, bear about 100 acres of maple, one mile from electric. You can't find fault with this lovely place and you won't quarrel over the price when you see it over the premises.
- No. 34. Excellent farm of 160 acres on new State road, 20 acres cleared, 15 acres in young growing timber, 1 1/2 miles from Orion, all the modern conveniences, all necessary outbuildings, new greenhouse, school and church within 10 minutes walk, bear about 100 acres of maple, one mile from electric. You can't find fault with this lovely place and you won't quarrel over the price when you see it over the premises.
- No. 35. Farm of 115 acres, good 1 1/2 story house, 2 barns, all the modern conveniences, all necessary outbuildings, new greenhouse, school and church within 10 minutes walk, bear about 100 acres of maple, one mile from electric. You can't find fault with this lovely place and you won't quarrel over the price when you see it over the premises.
- No. 36. Farm of 115 acres, good 1 1/2 story house, 2 barns, all the modern conveniences, all necessary outbuildings, new greenhouse, school and church within 10 minutes walk, bear about 100 acres of maple, one mile from electric. You can't find fault with this lovely place and you won't quarrel over the price when you see it over the premises.
- No. 37. Now, here's a farm for \$75 per acre and you can't buy it will say it must be a poor one to sell for that, in these times of high prices. Now just to show you how easy you can be taken, listen to this: One hundred and sixty acres, fine, productive land in good location, all the modern conveniences, all necessary outbuildings, new greenhouse, school and church within 10 minutes walk, bear about 100 acres of maple, one mile from electric. You can't find fault with this lovely place and you won't quarrel over the price when you see it over the premises.
- No. 38. Here's a farm for \$75 per acre and you can't buy it will say it must be a poor one to sell for that, in these times of high prices. Now just to show you how easy you can be taken, listen to this: One hundred and sixty acres, fine, productive land in good location, all the modern conveniences, all necessary outbuildings, new greenhouse, school and church within 10 minutes walk, bear about 100 acres of maple, one mile from electric. You can't find fault with this lovely place and you won't quarrel over the price when you see it over the premises.
- No. 39. If you could hear of a good farm of about 70 acres for \$2,500 you'd sit up and begin to reach for things, what? Well, here you are: 10 acres orchard, fair farm house, new cement barn, 100 rods from electric, large bit of first class gravel, a little over a mile from electric. Huh! That price will get you the whole outfit in two years. Fact.
- No. 40. Southfield farm of 96 acres, new 8-room house, 2 barns and chicken house, all buildings in first class shape, stream runs through middle of farm, 2 acres orchard, no waste land, no electric, \$80 per acre and will exchange for Birmingham improved.
- No. 41. Nine-room house, good barn with underground stable, two wells, four acres of timber, 3 acres good orchard, 2 miles from electric, terms easy, 100 rods from electric, fine location in desirable locality, less than a mile from thriving village of Southfield Heights. Will buy it and you can have your own way about terms.
- No. 42. Sixteen acres in high state of cultivation, good 3-room house which needs little expenditure to make it improved, good barn and chicken house, wire fences, good drainage, pretty little wood lot, six acres, fine old maple, 100 rods from electric, \$80 per acre, quarter mile to Little River, 10 minutes (auto) to electric. The price is—say, we won't let you right out in public. If we did every body would want it at once, but it's eight. What is that? Well, you just ask Whitehead.
- No. 43. Seven-room bungalow, vitrified brick veneer, 1 1/2 stories, toilet, bath, Pennsylvania tile, hot water only, city water, electric light, Cabot Benjamin stain, all new and up-to-the-minute, very particular, first class construction of A1 material throughout and located in the new Birmingham Heights, will buy it and you can have your own way about terms.
- No. 44. A bullly good Troy farm of 130 acres lying on both sides of the Flint line, 200 rods from electric, fine location, five other acres, first class buildings, bowling well furnishes high class home improved, all necessary outbuildings, new greenhouse, school and church within 10 minutes walk, bear about 100 acres of maple, one mile from electric. You can't find fault with this lovely place and you won't quarrel over the price when you see it over the premises.
- No. 45. Modern two-story home in the very best residence portion of the village, about 1 1/2 acres of land, 13 rooms, 2 toilets, bath, furnace, barn, fruit, everything to make it comfortable and convenient, all buildings comparatively new. Will exchange for good farm of 100 acres or more, with a mile or two of the electric, either line, or will sell for \$7,000 on easy terms.
- No. 46. (St. Clair Lake property, 300x300, sheet listing just put in, 65 fine shade trees, buildings, ice house, boat-house with water channel, fish houses, pool, shed, building worth \$2,500, fine place along the shore for summer resting place. Go and see it and then submit offer.

From the sale of a \$50,000 farm to the recovery of a wandering bull pup, you can put your faith in the want ads. They are great little hustlers, and are never off duty.

THE VALUE of well-printed neat-appearance stationery as a means of getting and holding desirable business has been amply demonstrated. Consult us before going elsewhere.