

Real Estate Exchange

OF WHITEHEAD & MITCHELL
Birmingham, Mich.

The following is a partial list of Farms, City and Village Lots, and Road Rights generally which we have for sale. As our list is constantly changing, we request that parties will write us if they do not see what they want in this list.

- 241 The new house with all modern conveniences, white tile, hot water, electric, gas, etc. Located in the Village of Royal Oak, one block from the corner of Woodward and 11th streets. Price \$10,000. Nice cozy little home for someone with high cash to make a small first payment.
- 282 Lot in Block 7, Campbell's Subdivision, good house, located for 1934. See location; price \$10,000. Nice cozy little home for someone with high cash to make a small first payment.
- 296 New eight-room house, built last year in Village of Royal Oak, one block from both electric and gas, central system, lot 10 feet front and 120 feet deep. Cost over \$12,000. Will sell for \$11,500.
- 298 House, barn, wagon shop, blacksmith shop, two lumber sheds, some acres of land, one acre of orchard, 100 feet front, 2 1/2 miles from electric in Village of Franklin, practical little home for someone. All ready for an enterprising backslider and vacationist to make good ground in a prosperous farming country. Best of location for selling, and \$2,000 cash will buy it right off the ground.
- 303 One of the nicest lots on the Buell Addition, facing on Woodward, 100 feet frontage and 120 feet deep. Corner lot, and one of the best in the building in the village. Can be bought for cash, or on a long term (well) appeal to any one—either for building or investment.
- 318 New brick house, two blocks from electric, built about 1934. Five bedrooms, electric, gas, modern conveniences, two-story, up-to-date residence. Nice rooms, concrete porch, lawn, lawn, lawn. \$11,000. Home with a lot.
- 319 A cozy, convenient home with cash \$2,000 to build. Located in one of the best sections of the city. For the conditions offered, it is a bargain. Will sell for \$11,000. Home with a lot.
- 320 Excellent business chance in a small village. Home with a lot. Will sell for \$11,000. Home with a lot.
- 321 Pine farm of 60 acres in the midst of the Bloomfield Hills. One block from the electric, nearly all Page fence. Eight-room stone house, two-story, two-car garage, two barns, wooded lot, two good houses, two complete tennis courts, swimming pool, supplies best water, never failing, good house, about 1/2 mile from electric, very nice price and nice lot. Will sell for \$110,000 per acre.
- 323 If quality in farming land is what you are looking for, this is the place. One block from the electric, 100 feet front, 120 feet deep. One block from the electric, 100 feet front, 120 feet deep. One block from the electric, 100 feet front, 120 feet deep.
- 324 Ninety-two acres, a mile north of the electric in Royal Oak. One block from the electric, 100 feet front, 120 feet deep. One block from the electric, 100 feet front, 120 feet deep.
- 326 Twenty-five acres, 1/2 mile from the electric in Royal Oak. One block from the electric, 100 feet front, 120 feet deep. One block from the electric, 100 feet front, 120 feet deep.
- 327 Forty acres, one block outside of the corporate limits of Birmingham. Rich home site, one block from the electric, 100 feet front, 120 feet deep. One block from the electric, 100 feet front, 120 feet deep.
- 328 House and two lots, two blocks from electric in Birmingham. One block from the electric, 100 feet front, 120 feet deep. One block from the electric, 100 feet front, 120 feet deep.
- 350 A classic among the farms, 160 acres, one block from the electric, 100 feet front, 120 feet deep. One block from the electric, 100 feet front, 120 feet deep.
- 352 Forty acres, one block outside of the corporate limits of Birmingham. Rich home site, one block from the electric, 100 feet front, 120 feet deep. One block from the electric, 100 feet front, 120 feet deep.
- 353 Ideal little place for a country home, one block from the electric, 100 feet front, 120 feet deep. One block from the electric, 100 feet front, 120 feet deep.
- 354 One of the best equipped and lowest priced homes in the city. One block from the electric, 100 feet front, 120 feet deep. One block from the electric, 100 feet front, 120 feet deep.
- 355 Seven-room house, good cellar, hot water, gas, electric, etc. One block from the electric, 100 feet front, 120 feet deep. One block from the electric, 100 feet front, 120 feet deep.
- 357 20-acre farm, two lots of buildings, one block from the electric, 100 feet front, 120 feet deep. One block from the electric, 100 feet front, 120 feet deep.
- 358 Large property, one block and half from the electric, 100 feet front, 120 feet deep. One block from the electric, 100 feet front, 120 feet deep.
- 359 You have seen the best of Birmingham, one block from the electric, 100 feet front, 120 feet deep. One block from the electric, 100 feet front, 120 feet deep.

He Found the Real Which Compared Favorably With the Ideal.

BY MILDRED CAROLINE GOODRIDGE

Wherever he looked, whether at a lovely sunset scene or some radiant picture, he saw a scene of gold and blue, a check the hue of a rose leaf and eyes as tender as the softest moonlight. It affected the heart like enchanted music. The hushed dreams of youth were awakened and his pulse throbbed at the alarm.

He sat now in the Norman Dacey—ranging rich in money but disaffected of soul, telling the story of it all to his closest friend, Elliott Hughes. "As he spoke his subdued tones reminded of a poet turning some sweet and tender lay for into his barren life had some a purpose—to find one woman he had seen and to tell her that he loved her."

All about them was the luxury and refinement of a magnificent home, that had responded to the chatter and song and gayer of broadened dances and danced jeweled demitisse. Now, however, there was only a fading recollection of a homespun garb, plain and simple, and the old-fashioned brooch Dacey had been showing his friend, valued more than the Dacey family jewels.

"Two months," he was saying, "and it seems like two years. It was just beyond the village that the team coughed at a passing automobile. I was thrown out. It was the crash from deep cut that was the most serious. I was stunned. Then between that and the hospital there was one supreme moment. It was when I saw her."

"You have told that, Dacey," broke in Hughes in a tone of slight rally. "She was lovely as an hour and all that."

"She was simply a girl, an innocent, beautiful girl, a girl who had been probably a relative. She had torn a scarf from her throat and was trying to staunch the blood from my wound and she was so kind and so gentle and so soul-like again. Then the blackness of death again. I was taken to the hospital. They told me there that if she died I would never see her again."

Abruptly Dacey left the room, the sudden door closed the friendly gaze of his sister. It was now, Gloria revealed, whom he, at the next day—the happy day, the day of his immortal that he would get to become his wife.

(Copyright, 1935, by W. G. Chapman.)

TRUTH ABOUT WALL STREET
Philosopher in Humorous Journal Teller of Things That Are and That Might Have Been.

Out of the fusillade of ideas brought on by the Wall Street investigations something is sure to result. Already the dawn is putting the fog to rout. It is clear now that Wall Street had a number of very painful things the matter with it, but that without being aware of the fact. As soon as Wall Street found that it was not in the money, the first to go was for a doctor. And the rest of us, as the fog altitudes, know that all of the little firms which we took in stocks would have brought in a handsome return if only the stock exchange had been incorporated or if somebody hadn't washed a sale of some other day into the regular wash day, or if some person, in a moment of carelessness (it certainly wasn't intentional), hadn't left a loose loose somewhere.

All that, however, has passed or nearly passed. The time is now showing the most immature lamb can walk boldly into his own trap. Already the dawn is putting the fog to rout. It is clear now that Wall Street had a number of very painful things the matter with it, but that without being aware of the fact. As soon as Wall Street found that it was not in the money, the first to go was for a doctor. And the rest of us, as the fog altitudes, know that all of the little firms which we took in stocks would have brought in a handsome return if only the stock exchange had been incorporated or if somebody hadn't washed a sale of some other day into the regular wash day, or if some person, in a moment of carelessness (it certainly wasn't intentional), hadn't left a loose loose somewhere.

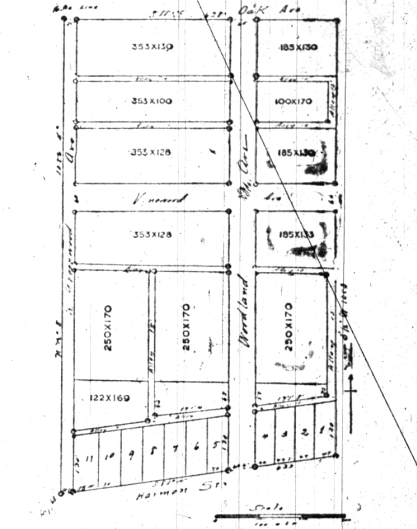
All that, however, has passed or nearly passed. The time is now showing the most immature lamb can walk boldly into his own trap. Already the dawn is putting the fog to rout. It is clear now that Wall Street had a number of very painful things the matter with it, but that without being aware of the fact. As soon as Wall Street found that it was not in the money, the first to go was for a doctor. And the rest of us, as the fog altitudes, know that all of the little firms which we took in stocks would have brought in a handsome return if only the stock exchange had been incorporated or if somebody hadn't washed a sale of some other day into the regular wash day, or if some person, in a moment of carelessness (it certainly wasn't intentional), hadn't left a loose loose somewhere.

HOME SITES!

If you are planning a Country Home, convenient to the City, let us call your attention to one of the best locations for this purpose between Detroit and Bloomfield Hills. Our new

Birmingham Heights

BIRMINGHAM HEIGHTS, Just to the North of the City, 1/2 mile from the Electric, 1/2 mile from the City.



Subdivision!

Is right in the popular and fashionable district, only a block from Woodward Avenue, with 15-minute electric car service, 10-cent fare, and half an hour ride to city limits.

City Water, Cement Walks, Electric Light, Good Drainage, 600 feet above the Detroit River, and altogether ideal sanitary conditions.

Consider the rapid rise in Birmingham real-estate values for the past three years; no feverish boom, but a steady, reliable increase in values, due to the building of beautiful homes for the better class of home folks. Let us tell you about our easy terms and small payments—then make an investment. You cannot lose.

Short distance from the select private school—Bloomfield Hills Seminary—becoming popular among particular people.

Twelve large building sites, varying in size from 100x169 feet to 250x338 feet; soil a gravelly loam, fine for gardening, just what will appeal to you. Larger than a Village Lot, but small enough to dispense with the services of a care-taker.

Only 12 miles from the Detroit City Limits.

Restricted to Residences.

Numerous Beautiful homes have been built in the immediate vicinity during the past year.

Write us or call for terms and prices.

Whitehead & Mitchell

Birmingham Michigan

Don't Overlook
that advertisement, if you
see it, you can save half
the cost of the MONEY