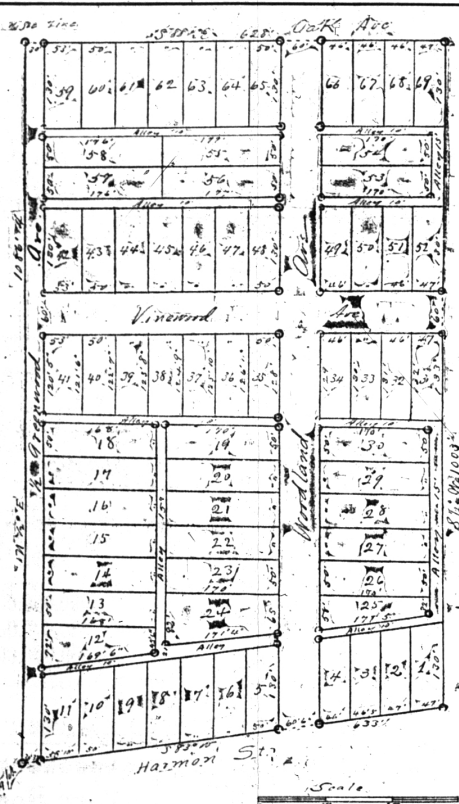


The Top o' the Mornin'

Always, from

Birmingham Heights

Cement Walks, Shade Trees and Public Sewers



ARMIES OF BALKAN ALLIES, LED BY BULGARIANS, PUSH TO WITHIN SIGHT OF CONSTANTINOPLE.

GREEKS BOLDLY SINK TURKISH WARSHIP.

Turk Ships Bombard Lighthouses, and Bulgarians Protest Over Such Unnecessary Conduct.

The Turkish army on which the fate of the Ottoman empire depends has been outgeneraled and outthought. It has made what is believed to be the last stand against the victorious Bulgarians and is now falling back in disorder on its final line of defense at the forts of Tchaus, only 25 miles from Constantinople.

Grave doubts are expressed in military circles, and repeated even in the Turkish capital, as to whether the remnants of the immense but disorganized army of the sultan will make any serious attempt to hold this line.

Foreigners in Constantinople are fearful for the safety of the Christian populations of the Turkish towns and the European powers have taken steps in this connection by the dispatch of warships to Saloniki, Constantinople and other Turkish ports for the protection of their nationals.

This is the most pressing question of the moment. One Constantinople voice of the Constantinople press that the Turkish retreat from Tchaus might result in no longer an army, but a mob.

Old residents of Constantinople who know the Turks thoroughly and are not inclined to take an alarmist attitude, say the Turkish army could afford some protection at Salonki, but the widely scattered missions and Christian populations in their opinion are already seriously endangered.

No Time to Reorganize.

The Bulgarians, it is believed, have shown such dash since the opening of the campaign are not likely to give the Turks much time to reorganize. It is true they have hundreds of dead and wounded, both Turks and Bulgarians, to dispose of, and this must be done according to military regulations, but they had, however, similar difficulties to contend against after the victory at Kirk-Kilisseh and around Adrianople, but there was not much lull in the fighting then.

Other parts of the line of invaders are pulling themselves together for another spring, which they hope will finally and definitely put an end to Turkish rule in Europe.

Servians Do Their Part.

The Servians, having completed the occupation of Macedonia, are establishing civil administrations there and releasing some of their troops to the assistance of their allies at Saloniki. On the latter place armies are converging from three directions.

The Greeks, too, are taking the offensive and having occupied the Aegean sea, some Turkish islands conveniently located for attack, have put out of commission a Turkish warship stationed at Saloniki by torpedoing her during the night. She was not of great value.

Powers Must Keep Out.

Nothing new has been heard from the region of Scutari except a report that the powder magazine in Tarsus has been destroyed by Montenegrin shells.

Whitehead & Mitchell
Exchange Bank, Birmingham, Mich.

The following is a partial list of Farms, City and Village Lots, and Real Estate generally which we have for sale. As our list is constantly changing, we request that parties will write us as they do not see what they want in this list.

- 241. Five new houses with all modern conveniences, within 300 feet of the west side of Woodward Ave. \$12,000.00. Hardwood finish, lot 50x120.00. plenty of fruit trees, water, gas, sewer, etc. \$12,000.00, and that all we ask for the premises. Well worth looking at.
- 242. Lot 4 in Block 7, Campbell's Subdivision, good house, insured for \$380.00. Leasehold price \$100.00. Nice cozy little home for some one with enough cash to make a small first payment.
- 256. Nice eight-room house built last year in Village of Royal Oak, one block from main electric lines, gas, water, sewer, lot 50 feet front and 120 feet deep. \$12,000.00. Owner \$1,000.00, but will sell for \$12,000.00.
- 258. House, barn, wagon shop, blacksmith shop, two lots, located in the best residential district, in good neighborhood, 2 1/2 miles from city, lot 100x150.00. Fronting on Woodward Ave. in Michigan, prettiest village in Michigan. Blacksmith and wagonmaker to make a good road, also a blacksmith, right at the electric to Detroit. Say, what do you want anyhow? The price is right. If you doubt it ask Whitehead at the First National.
- 303. One of the nicest lots on the Buell Addition, facing on Woodward Ave., 120 feet front, 120 feet deep. Corner lot, and one of the most desirable building lots in the city. Will sell for cash at a price that will allow you to enter on a building program.
- 316. New brick house, two blocks from electric, bath, closet, furnace, city water, sewer, gas, etc. \$10,000.00. Two-story, up-to-date residence, nice neighborhood, lot 100x150.00. Will sell for cash at a price that will allow you to enter on a building program.
- 318. A cozy, comfortable home which cost \$2,000.00 to build the house, and it is in the best residential district in Birmingham, and would not be sold but for the fact that the owner is leaving the city. Your good fortune and no fault of the seller. Terms may and long time to the right kind of a purchaser.
- 320. Excellent business place in a small village. Store and dwelling, 1 1/2 acres, with a good barn, and a good lot of land with small main, unable to do hard labor to make a living. Good investment. Wealthy farming community. Terms may and long time to the right kind of a purchaser.
- 321. Fine farm of 40 acres in the midst of the Birmingham Hills, a little over a mile from the city. Good buildings, including a two-story stone house, two barns, and a good lot of land. Will sell for cash at a price that will allow you to enter on a building program.
- 323. If quality in farming lands is what you want, this is the place. One mile from the electric on excellent land, with a good barn, and a good lot of land. Will sell for cash at a price that will allow you to enter on a building program.
- 324. Ninety-two acres, mile east of the electric in Royal Oak, ten-room house, with a good barn, and a good lot of land. Will sell for cash at a price that will allow you to enter on a building program.
- 335. Will exchange for small farm near Birmingham, 100 acres or more in the best part of Birmingham, twelve rooms, two blocks from the electric. Price \$12,000.00. Will sell for cash at a price that will allow you to enter on a building program.
- 336. Twenty-two acres, 1 1/2 miles from the electric, fine small house, with a good barn, and a good lot of land. Will sell for cash at a price that will allow you to enter on a building program.
- 347. Forty acres just outside of the corporate limits of Birmingham. Rich neighborhood, with a good barn, and a good lot of land. Will sell for cash at a price that will allow you to enter on a building program.
- 348. House and two lots, two blocks from electric in Birmingham, 1 1/2 front and 120 feet deep, good water, sewer, gas, etc. Will sell for cash at a price that will allow you to enter on a building program.
- 350. A classic among the farms, 160 acres, one-half mile from Birmingham, with a good barn, and a good lot of land. Will sell for cash at a price that will allow you to enter on a building program.
- 352. Forty-two acre farm about half a mile from the electric, with a good barn, and a good lot of land. Will sell for cash at a price that will allow you to enter on a building program.
- 353. Ideal little place for a country home, one-half mile from Birmingham, with a good barn, and a good lot of land. Will sell for cash at a price that will allow you to enter on a building program.
- 354. One of the best equipped and loveliest homes in Birmingham, with a good barn, and a good lot of land. Will sell for cash at a price that will allow you to enter on a building program.
- 355. Seven-room house, good water, sewer, gas, etc. Will sell for cash at a price that will allow you to enter on a building program.
- 356. 200-acre farm, two sets of buildings, with a good barn, and a good lot of land. Will sell for cash at a price that will allow you to enter on a building program.

OUR ADVERTISING COLUMNS

are read by the people because it gives them news of absorbing interest. People no longer go looking about for things they want—they go to their newspapers for information as to where such things may be found. This method saves time and trouble. If you want to bring your wares to the attention of this community, our advertising columns

Should Contain Your Ad

Selective! Restricted! Desirable!

Is the

New Sub-Division of Whitehead & Mitchell

At Birmingham.

One Block West of Woodward Avenue

These Lots, 69 in number, are surrounded by Harmon, Greenwood and Oak Streets, high and dry, beautifully situated, and for a home or an investment, never can be excelled.

Many elegant new homes surround this attractive sub-division.

Advantages of Birmingham for Home Dwellers

Population nearly 2,000. Taxes light. Finest climate, and healthiest-located village near Detroit, being 300 feet above Detroit River, with the best class of people on earth to associate with. One of the finest schools in Michigan, averages even up and better with 10 cities in Michigan that have each a population of 4,000. Our graduates enter the U. of M. on their diplomas. Six Churches, and only 12 miles from city limits of Detroit. Cars run conveniently both to and from Detroit. We have the best Water-Works System in Michigan. We are healthy—no case of diphtheria or malignant scarlet fever has originated here for over 30 years.

See A. Whitehead or George H. Mitchell for Particulars