

Devoted to Our Own Locality--We Labor for Its Interests.

THIRTY-FIRST YEAR. NO. 25. BIRMINGHAM, OAKLAND COUNTY, MICHIGAN, FRIDAY, OCTOBER 16 1908. WHOLE NUMBER, 1591

NEW TELEPHONES

The Michigan State Telephone Company are stretching out All the Time

New lines are being built in our vicinity by Mr. Cressman, under the direction of that energetic and pushing District Manager J. J. McQuaid, at Pontiac. The Michigan State Telephone company has put in nearly \$1000 in new construction and have pretty near filled up all contracts on hand by Manager Mitchell for the past year. Those who had their contracts in before May 21, '08, are lucky and are getting themselves on the back for foresight, as the rates have been slightly raised--well not raised exactly--the 75 cents each quarter has been relegated to a back seat. The new edict issued last May which reads as follows: establishes the future price of telephones in our midst and the cost of poles, labor, wire and everything connected with the telephone business being so high, these prices now are wonderfully cheap. Read and then you will know what it will cost you to have a phone installed.

Contracts for farm line service at the rate of \$15 per annum may be taken to utilize our existing farm line circuits, where the rates on said circuits are \$15 or less per annum, and then only on condition that the company's expenditure is limited to the placing of the instrument and running of the drop wire. Applicants for service in the vicinity of farm circuits serving subscribers paying \$15 per annum, may obtain same by signing a contract for \$15 per annum, and furnishing the necessary construction to connect their premises with one of the existing farm line circuits. If such applicants are unwilling to furnish such additional construction, they may receive service at the rate of \$18 per annum, as outlined in the following paragraph:

Applicants desiring farm line service at locations requiring construction other than the stringing of the drop wire and placing of the instrument, may obtain same at the rate of \$18 per annum, providing the company's total expenditure for additional construction, including the drop wire and instrument, does not exceed \$40. For the purpose of determining whether or not the connecting of a given subscriber will exceed the \$40 limit, the erection of one pole shall be estimated at \$2.25, the stringing of each 100 feet of iron wire circuit on existing poles (six cross arms) at \$4.40; the placing of six cross-arms at \$3.80 each; and the placing of ten-pins at \$1.20 each.

BAPTIST-CHURCH NOTES.

Themes for sermons: Sunday morning, "Opportunity and how men meet it," Sunday evening, "The Christ rejected." B. Y. P. U. prayer meeting at 6 p. m. Topic, "The society and systematic giving." Lander, Miss Cray. The church and Ladies' Missionary society are planning to send delegates to the Baptist state convention which meets at Lansing next week beginning with the minister's meeting Monday evening and closing with the laymen's banquet on Friday evening. The Ladies' Aid society held their monthly business meeting and supper on Wednesday evening.

THE MALLEABLE RANGE

You cannot see the difference in this cut between the Malleable Range and the cheap Ranges. We will be glad to show you and you will have a chance to see them work.

Do not wait until you have all the money. We will make it easy for you to pay for them.

To get the Kitchenware FREE you will have to buy your Range not later than SATURDAY, OCTOBER 17.



The flues around the oven of "The Malleable" are larger than on other Ranges, which gives a greater volume of hot air around this vital part of the Range, and also affords better draft.

The oven plates are riveted to Malleable angle frames, being riveted to the Range body, making an air-tight joint. The oven in an ordinary Range is simply bolted to the Range body without bracing of any kind.

Body of Range has triple wall. The outer surface is a sheet of polished steel, the inside being cold rolled steel. Between them is asbestos mat board. On other Ranges there is an outer wall only, lined with a sheet of asbestos, which is held up by washers. This asbestos, being exposed, rubs off. At points of jointing is reinforced with angle iron and riveted together. On other Ranges the steel sheets are simply lapped over each other and bolted.

Disposed around the oven is the very best grey iron. The back lining alone weighs 36 pounds. It is made in four sections, a single one of which weighs as much as the entire lining of a cheap Range. Behind all liftings are air chambers, which greatly increase their life.

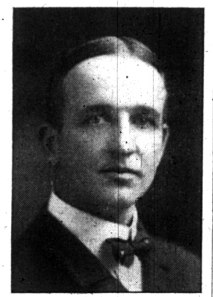
The following Ladies are using the Malleable Range. We hope you will ask any of them their experience with the Malleable Range.

Mrs. James J. P. Johnson, Hattie Evans, J. Bert Beasbey, Albert Cromie, John Leach, Wm. Smith, John Kruger, Earl Simonson, Henry Schultz.

ROYAL OAK MAN FUND SOLICITOR

Nominated for County Treasurer on Democrat Ticket--An Excellent Choice.

The Royal Oak Tribune speaks of the nomination for County Treasurer of George J. Baker, the popular cashier of the Royal Oak Savings Bank, in the following complimentary manner: Despite his refusal to stand for the nomination for County Treasurer, the Democrats in convention at Pontiac



forced the nomination upon George J. Baker, the popular cashier of the Royal Oak Savings Bank. Mr. Baker's natural fitness for the position and his political strength in this community was what impelled his friends to ask him to run for this position, believing that if he could not be elected to the position, it would be impossible for any candidate to be elected on that ticket. There is no doubt in the minds of his friends in The Oak but what he will carry the township by 150 majority, which would give him a show toward overcoming the Republican majority in the county.

SCHOOL NOTES.

Birmingham High School Football team played Royal Oak last Friday and defeated them 12 to 0. The boys are quite elated over winning. Emory Hanna and Earl Mudge played a star game.

Next Saturday our team play Pontiac "Reserves." Game called at 3 p. m. Our line up will be the same as before.

A Healthy Family.

"Our whole family has enjoyed good health since we began using Dr. King's New Life Pills, three years ago," says L. A. Bartlett, of Rural Route 1, Guilford, Maine. "They cleanse and tone up the system in a gentle way that does you good." See at Charles J. Shan's and James W. Cobb's drug stores.

MAN FOR SHERIFF

Any Democrat Wishing to Help the Cause of Bryan by a Cash Subscription Should Call on Mr. Mitchell

A certificate of authority has been issued to George H. Mitchell, of the Birmingham Eccentric by M. C. Wetmore, Chairman of the National Finance committee to receive funds to carry on the democratic campaign. The authority reads as follows:

This CERTIFICATE that George H. Mitchell, of Birmingham, County of Oakland State of Michigan, has been appointed a member of the Democratic National Finance Committee of said county, and is authorized to solicit and receive subscriptions to the Democratic National Campaign Fund. All subscribers to receive a colored lithographed souvenir receipt from the National Treasurer, M. C. Wetmore, chairman national finance committee. M. C. Dunlop, secretary national finance committee. Now then come on with your cash, 25 cents and upwards. All donors will receive a receipt for their money and also a beautifully colored lithographed souvenir from the National Treasurer, Bloomfield ought to contribute at least \$25. Hurry in with your subscriptions. Time is short.

Yours for the cause, GEORGE H. MITCHELL.

AT THE THEATRES.

LYCEUM. Divorce, a theme as old as the human race, is the foundation of Edwin Milton Royce's smart, musical play, "Marrying Mary," which will be offered at the Lyceum for one week, commenced Sunday afternoon. Marrying Mary is a pretty, piquant widow. The comedy of the piece is irresistible as there are three ex-husbands and three lovers all frolicing, back and forth on the stage. This season Miss Florence Gar, a young actress, who has the true gift of mimicry and seems charged with vivacity, is appearing in the title role. Miss Gar is an adept dancer, is graced with beauty and possesses the ability to wear rich and handsome gowns with modesty and becoming grace.

The engagement opens with a Sunday matinee, in addition to which the regular Wednesday and Saturday matinees will be given.

WHITNEY.

Commencing Sunday afternoon the management of the Whitney will offer Kilroy & Britton's picturesque melodrama "Sun Shot." The various scenes are laid in the mountains of Kentucky, affording opportunity for picturesque scenery. The story centers around a young government secret service agent. Certain reports have been brought to the notice of the Secret Service officials that a band of counterfeiters are operating in the mountains of Kentucky. The action throughout is spirited and the story is one of accumulating heart interest, as a romance of the Tennessee hills is sure to be. Many thrilling situations take place during the four acts and six scenes. The engagement is for one week with matinees daily except on Wednesday.

Married Man in Trouble.

A married man who permits any member of the family to take anything except "Foley's Ointment" and "Foley's Coughs, Colds and Lung Trouble," is guilty of neglect. Nothing else is as good for all pulmonary troubles. The genuine "Foley's Honey and Tar" contains "Foley's Honey and Tar" package. Sold by all druggists.

MAN FOR SHERIFF

Chauncey A. Harris a Most Admirable Selection for the Responsible Position.

Chauncey A. Harris, Republican candidate for Sheriff, was born in the Township of Highland, July 23, 1875. His father, Frederick Harris, who was a blacksmith by occupation, lived in that township for 23 years. He was elected Township Clerk on the Republican ticket for 18 years, and resigned that position to become County Clerk in 1905, which position he held for two terms. He continued to reside in the City of Pontiac until his death last spring.

Chauncey A. Harris during his boyhood assisted his father in the blacksmith shop and worked on the farm by the month, and in a store at Highland until he came to Pontiac in 1897. He served as Deputy County Clerk under his father in 1897 and 1898. After leaving the Clerk's office he worked in a bank for seven years, and then associated himself with the Pontiac Floral Company, with which company he was connected for about two years, leaving that company a little over a year ago to take the management of the Pontiac Cement Brick Company, which is a partnership composed of Mr. Pierce, of the Pontiac Floral Company, H. F. Messinger, Vice-President of the Oakland County Savings Bank, and Mr. Harris. Mr. Harris is still associated with that company.

Mr. Harris has been a life-long Republican. Was elected Supervisor of the Fourth Ward of the City of Pontiac in 1905 by a majority of 185. The following year he was elected by a unanimous vote, the Democrat party refusing to nominate any one against him. While on the Board of Supervisors he served on important committees, such as Chairman of the Ways and Means Committee, and in 1907 was elected by the Board as a delegate to the State meeting of Supervisors at Lansing.

He resides on Asylum Avenue, in the City of Pontiac, with his mother and sister. His sister having been employed as book-keeper at Waite Bros. and Robertson's since the organization of that firm.

MR. HARRIS HAS THIS TO SAY TO THE VOTERS OF OAKLAND COUNTY. PONTIAC, Mich., October, 1908. TO THE VOTERS:

As I am unable to meet all of you personally, this method of stating my position for your information is adopted. I am told that a large amount of money must be expended in order to be elected to this particular office. In that, I can merely say that I am unable to cover the county with hired workers. Nor do I understand why a candidate for Sheriff should spend more money than other candidates, either for hired workers or treating. If he must do so, then no party can aspire to that office.

I am also told that to be elected to this office, a secret promise must be made, or some understanding arrived at, to protect certain interests in violating the law.

No such secret understanding or pledge will be given. I am not running for Sheriff as a prohibition or anti-liquor candidate. I am not running that it does not really concern a Sheriff, in an official, what the laws are, nor belong to him to nullify any of them. So while I am not running as a "wet" or a "dry" candidate, I am standing squarely upon the platform that so long as a law is in force it is the duty of a Sheriff to assist the Prosecuting Attorney in enforcing it.

So, if the Prosecuting Attorney shall ask me to help him suppress a game, big game, a vile house, or secure the evidence of the violation of any law; I shall consider it my duty to assist him to the best of my ability, because it is the law, the same as if it was a case of larceny, or other offense.

Upon that platform I appeal to voters of all parties for their support, confidently believing that it is the honorable position to take, and that a majority of the voters of the county will so say by their votes. This statement is not made or intended as a reflection or attack upon any one, but to show the misrepresentations being made as to my position.

Very respectfully, CHAUNCEY A. HARRIS.

Saved His Boy's Life.

"My 3-year-old boy was badly constipated, had a high fever, and was in an awful condition. I gave him two doses of 'Foley's Ointment' and the next morning the fever was gone and he was entirely well. 'Foley's Ointment' saved his life." A. W. Kugh, Casimer, Wisconsin. Sold by all druggists.

W. H. POOLE, M. D. PRACTICE LIMITED TO EYE, EAR, NOSE AND THROAT. Office 270 Woodward Ave., Detroit.

Stop Pains almost instantly--Dr. Miller Anti-Pain Pills. No bad after-effects.

Closing Out! Learn to Dance

- 100 pairs Men's Wool Pants, were \$2.00, Now \$1.48
- 125 pairs Ladies' Summer Corsets, Now 35c
- 200 pairs Ladies' Seamless Hose, pair, Two pairs 25c, 15c
- 50 Ladies' Satin Waists, Now 98c
- 25 Ladies' Black Satin Skirts, Now \$1.00

F. BLAKESLEE BIRMINGHAM

New Shoes

- Kangaroo Bluchers--high top, Boys' \$2.50
- Elkhorn--high top, Men's, \$2.75
- Well worth 75c per pair more.
- Red High Top \$3.75
- Boys' Shoes--good ones, \$1.75
- The other reliable lines--Toiler, Blackstone, King George, Hardpan.

Shoes for Women, Girls, Men and Boys

New Woolen Underwear and Hosiery. Ask Spencer about Corduroy Coats and Trousers. He knows.

SPENCER & FERGUSON

FOOTWEAR, GROCERIES, GENTS' FURNISHINGS

GLASS

HELLO!

Yes, this is No. 24

What have we got today? We have the very best of Beef, Pork, Veal and Lamb on the market. Also Canned Goods, Vegetables and Fruits.

Remember I carry nothing but the best on the market.

A. R. PARKS

JNO. D. RIKER, M. D. Practice limited to EYE, EAR, NOSE, THROAT PONTIAC, MICH.

Local and Long Distance Phone 1776 Main

HOWARD G. CARTER & CO. INVESTMENT SECURITIES 24 Floor McGraw Bldg., Detroit, Mich.

Detroit United Railway (Operates all Detroit City Lines) FORTY-SEVEN DIVISIONS Time Table in effect Nov. 5, 1907--Subject to change without notice. All cars run on Central Standard Time.

Care Java Birmingham for Detroit at 55¢ a lb. and every half hour thereafter until 1:30 p. m.; then hourly until 1:50 p. m. Care London from 10:30 a. m. connects at Royal Oak with our Free Flyer.

Care Lowa Birmingham for Pontiac at 6:30 a. m. and half hourly thereafter until 9 p. m.; then hourly until 1:30 midnight.

Care New York from 10:30 a. m. connects at Royal Oak with our Free Flyer. Last car waits for passenger. On holidays, last car leaves half hour before time is time given.

FAST ELECTRIC BELTERS Operated over Detroit (Royal Oak) street, night and day. Belting all kinds of machinery, also repairing all belts on Detroit (Royal Oak) and Grand Trunk Railway.

J. C. COLLIER, Second Entrance Apts.

FOLEY'S KIDNEY CURE Makes Kidneys and Bladder Right

JAS. W. COBB

- We are constantly making this a better place to trade. It is too much to hope that some day not a single complaint will come from hundreds of our regular customers, but we're going to make the service just as near perfect as possible. And every day, nearly, we receive compliments from appreciative patrons on the noticeable result of our efforts to please. If you have had trouble elsewhere in getting just what you want--and when you want it--we urge you to give our Grocery a fair trial. The money you will save is not the least important feature of the proposition. The following price lists suggest the economy of placing your order here. Phone 128.
- | | |
|--|-----|
| Our "No. 1" Coffee, per lb. | 16c |
| Our "Special Blend" Coffee, per lb. | 25c |
| Our "Best Green" Coffee, per lb. | 30c |
| Our "Best Arabian" Mocha and Java, per lb. | 35c |
| New Java Teas, per lb. | 35c |
- | | | | |
|--|-----|----------------------------|------------|
| Cape Cod Cranberries, qt. | 12c | Fancy Oranges, per doz. | 40c |
| Sweet Potatoes, 3 lbs. | 10c | Large, ripe Bananas, doz. | 20c |
| Crisp Celery, 3 stalks for | 10c | Fresh Chestnuts, per lb. | 20c |
| Tomatoes for slicing, qt. | 5c | Smyrna Layer Figs, per lb. | 20c |
| Fancy White Potatoes, per lb. | 75c | Pumpkins, each | 5c and 10c |
| Apples, good cooking and eating, per bu. | 50c | Calif. Lemons, per doz. | 25c |
- Dairy Butter, lb., 28c Fresh Eggs, doz., 28c**
- A line of LAMPS, ranging in price from 20c to \$2.50, just received. LARDINERIES from 10c to 75c each. Extremely low price on FLOWER POTS while they last. Don't forget to ask for tickets on Rogers' celebrated Silverware.

PETER KERR & SON