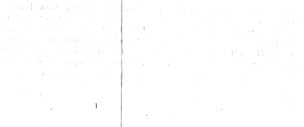
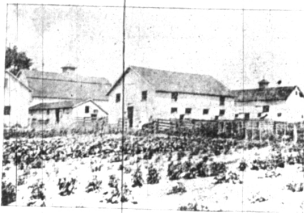


WATKINS SHEPHERD PONY FARM.

To those who can afford it, there is no pet for children equal from every point of view to the famous Shepherd pony. It is bred on the famous Shepherd pony farm, for not only do they afford an endless amount of amusement and recreation for the little ones, but they are teachers of nature and character.



C. H. SCHLAACK & CO.



PENINSULAR

product of the very best manufacturer in the world, foreign and domestic. Their stock which is the largest in the entire state, includes everything in the line of household articles in wood, tin, iron and granite and builders' supplies. They handle the world famous "Peninsular" and "Starland" stoves and ranges, such standard makes of the "E-well" and "E-well" as those made by the Detroit Vapor Stove

category of general hardware that can not be found in the fine store of this city. Their location being a modern structure. The building itself is worthy of any city would judge by itself. Both members of the firm are progressive and public spirited men, always working for the best interests of the town, and in its commercial life is a share partner of the business. The management of the business is in the hands of Mr. Schlaack.



RESIDENCE OF A WHITEHEAD.

MODEL GROCERY HOUSE

That of T. H. Cobb—Equal in Excellence to the Leading Detroit Table Supply Houses.

One of the latest and most complete models of Birmingham is T. H. Cobb, a grocery department, which has been the pride of the Park-Rose-Wood neighborhood. This is a thoroughly modern building, built especially for the purpose of handling a large amount of business, and is well equipped with every modern appliance. In addition to the above, Mr. Cobb has a large and well-stocked stock of groceries, and is known for his excellent service to his customers. The building is located at the corner of ...

BRIDGEWAY SEVEN METAL VEHICLES. T. H. COBB, Groceries, Park-Rose-Wood, Detroit, Mich.

EDWARD MONTGOMERY, Groceries, Park-Rose-Wood, Detroit, Mich.

DAN JOHNSON, Groceries, Park-Rose-Wood, Detroit, Mich.

DAVID M. DOTY, Groceries, Park-Rose-Wood, Detroit, Mich.

WALTER B. CARTER, Groceries, Park-Rose-Wood, Detroit, Mich.

WALTER B. CARTER, Groceries, Park-Rose-Wood, Detroit, Mich.

WALTER B. CARTER, Groceries, Park-Rose-Wood, Detroit, Mich.

WALTER B. CARTER, Groceries, Park-Rose-Wood, Detroit, Mich.

WALTER B. CARTER, Groceries, Park-Rose-Wood, Detroit, Mich.

WALTER B. CARTER, Groceries, Park-Rose-Wood, Detroit, Mich.

WALTER B. CARTER, Groceries, Park-Rose-Wood, Detroit, Mich.

WALTER B. CARTER, Groceries, Park-Rose-Wood, Detroit, Mich.

WALTER B. CARTER, Groceries, Park-Rose-Wood, Detroit, Mich.

WALTER B. CARTER, Groceries, Park-Rose-Wood, Detroit, Mich.

WALTER B. CARTER, Groceries, Park-Rose-Wood, Detroit, Mich.

WALTER B. CARTER, Groceries, Park-Rose-Wood, Detroit, Mich.

WALTER B. CARTER, Groceries, Park-Rose-Wood, Detroit, Mich.

WALTER B. CARTER, Groceries, Park-Rose-Wood, Detroit, Mich.

WALTER B. CARTER, Groceries, Park-Rose-Wood, Detroit, Mich.

WALTER B. CARTER, Groceries, Park-Rose-Wood, Detroit, Mich.

WALTER B. CARTER, Groceries, Park-Rose-Wood, Detroit, Mich.

NEW FURNITURE STOCK.

Dimes and Bell Have Added It to Their Undertaking Business.

One of the most important moves in local business circles this spring was the organization of the partnership firm of Dimes & Bell on May 1st. For the purpose of extensive operations in the line of furniture, etc., George E. Dimes, the senior member of the firm, was born in this county and for a period of nearly a quarter of a century has separately conducted the National Hotel and his undertaking business. This spring he retired from the hotel business to enter a partnership with S. O. Bell, an enterprising and progressive young man, who has been a resident of Birmingham for several years.

The firm are continuing the undertaking business, and will also have Dimes as a thoroughly experienced general contractor and carpenter, and also as a resident of Birmingham. The new firm will have a large stock of furniture, etc., and will be able to furnish the same at very low prices. The firm are located at the corner of ...

THOMAS B. ...

THOMAS B. ...

THOMAS B. ...

THOMAS B. ...

THOMAS B. ...

THOMAS B. ...

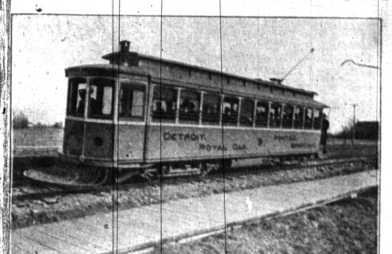
THOMAS B. ...

THOMAS B. ...

THOMAS B. ...

THOMAS B. ...

THE DETROIT & PONTIAC RAILWAY.



The Detroit & Pontiac Railway is a passenger line connecting the two cities. It is a convenient and comfortable mode of transportation. The trains are well equipped with modern appliances and are operated by experienced conductors. The line is open for business every day, and the fares are very reasonable. The railway is a great convenience for those who wish to travel between the two cities.

The Detroit & Pontiac Railway is a passenger line connecting the two cities. It is a convenient and comfortable mode of transportation. The trains are well equipped with modern appliances and are operated by experienced conductors. The line is open for business every day, and the fares are very reasonable. The railway is a great convenience for those who wish to travel between the two cities.

The Detroit & Pontiac Railway is a passenger line connecting the two cities. It is a convenient and comfortable mode of transportation. The trains are well equipped with modern appliances and are operated by experienced conductors. The line is open for business every day, and the fares are very reasonable. The railway is a great convenience for those who wish to travel between the two cities.

The Detroit & Pontiac Railway is a passenger line connecting the two cities. It is a convenient and comfortable mode of transportation. The trains are well equipped with modern appliances and are operated by experienced conductors. The line is open for business every day, and the fares are very reasonable. The railway is a great convenience for those who wish to travel between the two cities.

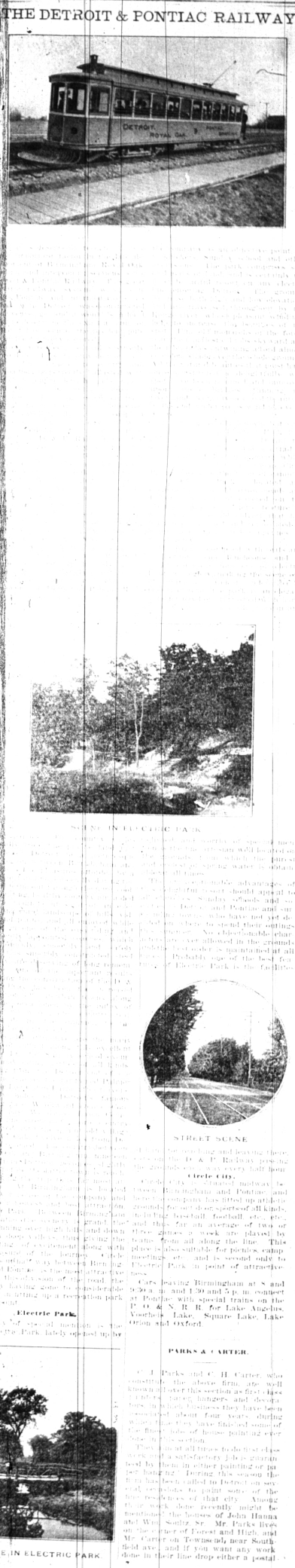
The Detroit & Pontiac Railway is a passenger line connecting the two cities. It is a convenient and comfortable mode of transportation. The trains are well equipped with modern appliances and are operated by experienced conductors. The line is open for business every day, and the fares are very reasonable. The railway is a great convenience for those who wish to travel between the two cities.

The Detroit & Pontiac Railway is a passenger line connecting the two cities. It is a convenient and comfortable mode of transportation. The trains are well equipped with modern appliances and are operated by experienced conductors. The line is open for business every day, and the fares are very reasonable. The railway is a great convenience for those who wish to travel between the two cities.

The Detroit & Pontiac Railway is a passenger line connecting the two cities. It is a convenient and comfortable mode of transportation. The trains are well equipped with modern appliances and are operated by experienced conductors. The line is open for business every day, and the fares are very reasonable. The railway is a great convenience for those who wish to travel between the two cities.

The Detroit & Pontiac Railway is a passenger line connecting the two cities. It is a convenient and comfortable mode of transportation. The trains are well equipped with modern appliances and are operated by experienced conductors. The line is open for business every day, and the fares are very reasonable. The railway is a great convenience for those who wish to travel between the two cities.

The Detroit & Pontiac Railway is a passenger line connecting the two cities. It is a convenient and comfortable mode of transportation. The trains are well equipped with modern appliances and are operated by experienced conductors. The line is open for business every day, and the fares are very reasonable. The railway is a great convenience for those who wish to travel between the two cities.



STREET SCENE IN ELECTRIC PARK.

STREET SCENE IN ELECTRIC PARK.

STREET SCENE IN ELECTRIC PARK.

STREET SCENE IN ELECTRIC PARK.

STREET SCENE IN ELECTRIC PARK.

STREET SCENE IN ELECTRIC PARK.

STREET SCENE IN ELECTRIC PARK.

STREET SCENE IN ELECTRIC PARK.

STREET SCENE IN ELECTRIC PARK.

STREET SCENE IN ELECTRIC PARK.

STREET SCENE IN ELECTRIC PARK.

STREET SCENE IN ELECTRIC PARK.

STREET SCENE IN ELECTRIC PARK.

STREET SCENE IN ELECTRIC PARK.

STREET SCENE IN ELECTRIC PARK.

STREET SCENE IN ELECTRIC PARK.

STREET SCENE IN ELECTRIC PARK.

STREET SCENE IN ELECTRIC PARK.