

Pointed Questions

What do you think of sales, so called, with no motive given for their existence?
What do you think of buying damaged goods at so-called cheap prices?

They are bound to give out when least expected. Facts rise, and the reason that such goods cannot be sold for more is because they are worth no more. Competition will prove it. To charge any and all to goods better than my ordinary, every-day values. New goods, some damaged, at prices lower than any, because I have lower expenses than any of my competitors.

DRY GOODS.

A new and complete line of Ladies' Skirts and Short Waists, motorized satons. Ladies' and Children's Hosiery. Ladies' Lace Hosiery. New from 10c to \$1.00. Misses' Hats and Caps, a full line of new spring goods. Ladies' Wear, etc. Full line from 25c to \$1.00.

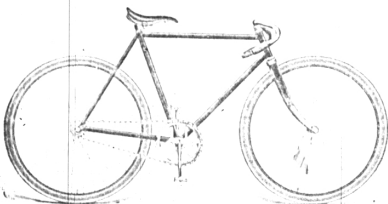
BOOTS AND SHOES.

\$5.00 worth of new shoes for the shoe store. Gents' Ladies' Misses' and Children's. I have made for prices as low as 50c a pair for cash only. I propose to keep them at that price all day.

Visit today, early and low prices.

V. NIXON.

RIDE A WHEEL THIS SEASON?



Make a good selection by buying a

Phoenix, Geneva or Cavalier.

Prices from \$20 to \$35.

A full line of Bicycle Supplies. Repairing at Low Prices.

Good line of Men's and Boys' Leather Belts from 25c to \$1.00; also Leather Suspenders.

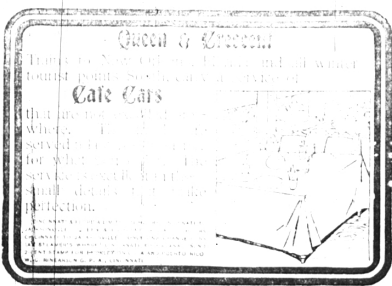
E. A. O'NEAL, BIRMINGHAM, MICH.

The Favorite Amusement Place

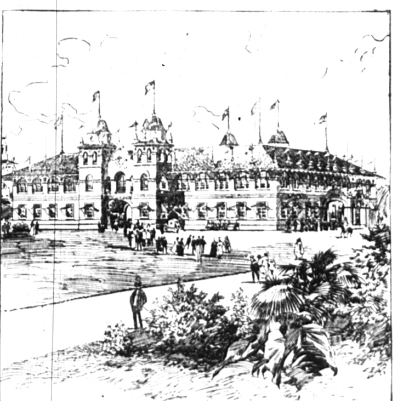
Wonderland.

Performances—Afternoon and Evening.

Entire Change of Attractions Every Week.



SERVICE BUILDING AT THE PAN-AMERICAN EXPOSITION.



Copyright, 1906, by the Pan American Exposition Co.

The large Service Building at the Pan-American Exposition, to be held in Buffalo from May 1 to Nov. 1, 1906, was completed in 32 working days and was the first building erected on the grounds. It is the present home of a large corps of officers and employees having immediate charge of the construction work of the Exposition. This handsome building is 105 by 145 feet, two stories high. In it are the office of the director of works, the landscape architect, superintendent of building construction, purchasing agent, chief engineer, mechanical and electrical engineer, with their numerous assistants.

COUNCIL PROCEEDINGS.

OFFICIAL.

Regular meeting, Council Room, May 14, 1906.

President Lottan in the chair. Trustees: present—Schlack, Perry, Hargrave, Handel and Whitehead. Absent—Smith.

A motion of Hargrave, supported by Whitehead, that the petition asking a vote for the right of franchise of the Water Works be received and referred to the committee on franchises, was carried. On motion of Hargrave, supported by Whitehead, the report of the committee on franchises was received and referred to the committee on franchises.

On motion of Hargrave, supported by Whitehead, the report of the committee on franchises was received and referred to the committee on franchises.

On motion of Hargrave, supported by Whitehead, the report of the committee on franchises was received and referred to the committee on franchises.

On motion of Hargrave, supported by Whitehead, the report of the committee on franchises was received and referred to the committee on franchises.

On motion of Hargrave, supported by Whitehead, the report of the committee on franchises was received and referred to the committee on franchises.

On motion of Hargrave, supported by Whitehead, the report of the committee on franchises was received and referred to the committee on franchises.

On motion of Hargrave, supported by Whitehead, the report of the committee on franchises was received and referred to the committee on franchises.

On motion of Hargrave, supported by Whitehead, the report of the committee on franchises was received and referred to the committee on franchises.

On motion of Hargrave, supported by Whitehead, the report of the committee on franchises was received and referred to the committee on franchises.

On motion of Hargrave, supported by Whitehead, the report of the committee on franchises was received and referred to the committee on franchises.

On motion of Hargrave, supported by Whitehead, the report of the committee on franchises was received and referred to the committee on franchises.

On motion of Hargrave, supported by Whitehead, the report of the committee on franchises was received and referred to the committee on franchises.

On motion of Hargrave, supported by Whitehead, the report of the committee on franchises was received and referred to the committee on franchises.

On motion of Hargrave, supported by Whitehead, the report of the committee on franchises was received and referred to the committee on franchises.

On motion of Hargrave, supported by Whitehead, the report of the committee on franchises was received and referred to the committee on franchises.

On motion of Hargrave, supported by Whitehead, the report of the committee on franchises was received and referred to the committee on franchises.

On motion of Hargrave, supported by Whitehead, the report of the committee on franchises was received and referred to the committee on franchises.

On motion of Hargrave, supported by Whitehead, the report of the committee on franchises was received and referred to the committee on franchises.

On motion of Hargrave, supported by Whitehead, the report of the committee on franchises was received and referred to the committee on franchises.

On motion of Hargrave, supported by Whitehead, the report of the committee on franchises was received and referred to the committee on franchises.

On motion of Hargrave, supported by Whitehead, the report of the committee on franchises was received and referred to the committee on franchises.

On motion of Hargrave, supported by Whitehead, the report of the committee on franchises was received and referred to the committee on franchises.

THE HOUSE IS ON FIRE!

Well, what if it? My valuable papers are secure in my Safe Deposit Box at the

EXCHANGE BANK.

It is only necessary to hold a dollar and it is worth ten times the amount.

Deeds, Mortgages, Farm Leases, Wills, Conveyances.

And every kind of Notary Public Business connected with the practice. Trusts, executors, administrators, etc., etc.

Exchange Bank, 100 N. 1st St., Detroit, Mich.

Exchange Bank, 100 N. 1st St., Detroit, Mich.

Exchange Bank, 100 N. 1st St., Detroit, Mich.

Exchange Bank, 100 N. 1st St., Detroit, Mich.

Exchange Bank, 100 N. 1st St., Detroit, Mich.

Exchange Bank, 100 N. 1st St., Detroit, Mich.

Exchange Bank, 100 N. 1st St., Detroit, Mich.

Exchange Bank, 100 N. 1st St., Detroit, Mich.

Exchange Bank, 100 N. 1st St., Detroit, Mich.

Exchange Bank, 100 N. 1st St., Detroit, Mich.

Exchange Bank, 100 N. 1st St., Detroit, Mich.

Exchange Bank, 100 N. 1st St., Detroit, Mich.

Exchange Bank, 100 N. 1st St., Detroit, Mich.

Exchange Bank, 100 N. 1st St., Detroit, Mich.

Exchange Bank, 100 N. 1st St., Detroit, Mich.

Exchange Bank, 100 N. 1st St., Detroit, Mich.

Exchange Bank, 100 N. 1st St., Detroit, Mich.

Exchange Bank, 100 N. 1st St., Detroit, Mich.

A CONSTANTLY CHANGING STOCK OF TAILOR-MADE SUITS.

An ever-changing variety of these dress garments awaits you at this store. The styles of suits are good tomorrow and so on. We have only a few of a kind, because we realize that well-dressed women like to meet others with a new suit on.

Good quality and price these dress garments are exclusive. Within the week we have received 42 suits, manufacturers' samples, not two alike. However, the very latest styles of one of the foremost manufacturers in New York. Prices range from \$25 to \$40 each. We have also received a number of light gray, blue, white, and black over white. A full line of suits with black, blue, gray, white, and black. Labels at \$12.50 and \$22.50. Brown, blue, gray, white, and black suits made from American cloth, well-dressed jackets at \$12.50.

New Skirts, Separate Jackets and Short Waists.

WAITE BROS., ROBERTSON & CO., Pontiac.

\$25,000 IN 1,000 PRIZES

ARE YOU INTERESTED IN THE GREATEST COUNTRY ON THE GLOBE?

The study of the world's population is the ECCENTRIC, Birmingham, Mich., and many other cities, which will cost you 1,000 prizes for \$25,000 in 1,000 prizes.

Press Publishing Association, of Detroit, Mich.

Press Publishing Association, of Detroit, Mich.

Press Publishing Association, of Detroit, Mich.

Press Publishing Association, of Detroit, Mich.

Press Publishing Association, of Detroit, Mich.

Press Publishing Association, of Detroit, Mich.

Press Publishing Association, of Detroit, Mich.

Press Publishing Association, of Detroit, Mich.

Press Publishing Association, of Detroit, Mich.

Press Publishing Association, of Detroit, Mich.

Press Publishing Association, of Detroit, Mich.

Press Publishing Association, of Detroit, Mich.

Press Publishing Association, of Detroit, Mich.

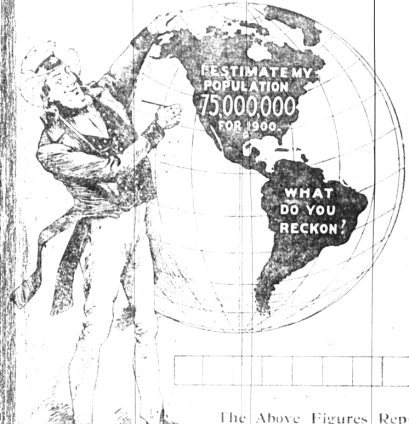
Press Publishing Association, of Detroit, Mich.

Press Publishing Association, of Detroit, Mich.

Press Publishing Association, of Detroit, Mich.

Press Publishing Association, of Detroit, Mich.

Press Publishing Association, of Detroit, Mich.



The Above Figures Represent My Estimate.

PRIZES TO BE AWARDED AS FOLLOWS:

PRIZES TO BE AWARDED AS FOLLOWS:

PRIZES TO BE AWARDED AS FOLLOWS:

PRIZES TO BE AWARDED AS FOLLOWS:

PRIZES TO BE AWARDED AS FOLLOWS:

PRIZES TO BE AWARDED AS FOLLOWS:

PRIZES TO BE AWARDED AS FOLLOWS:

PRIZES TO BE AWARDED AS FOLLOWS:

PRIZES TO BE AWARDED AS FOLLOWS:

PRIZES TO BE AWARDED AS FOLLOWS:

PRIZES TO BE AWARDED AS FOLLOWS:

PRIZES TO BE AWARDED AS FOLLOWS:

Church Notes.

METHODIST EPISCOPAL, 100 N. 1st St., Detroit, Mich.

METHODIST EPISCOPAL, 100 N. 1st St., Detroit, Mich.

METHODIST EPISCOPAL, 100 N. 1st St., Detroit, Mich.

METHODIST EPISCOPAL, 100 N. 1st St., Detroit, Mich.

METHODIST EPISCOPAL, 100 N. 1st St., Detroit, Mich.

METHODIST EPISCOPAL, 100 N. 1st St., Detroit, Mich.

METHODIST EPISCOPAL, 100 N. 1st St., Detroit, Mich.

METHODIST EPISCOPAL, 100 N. 1st St., Detroit, Mich.

METHODIST EPISCOPAL, 100 N. 1st St., Detroit, Mich.

LYCEUM DETROIT'S SPACIOUS THEATER.

EVENINGS 7:30-9:30. For Best Reserved Seats.

Next Week—"The Jilt."

Next Week—"The Open Gate."

Next Week—"The Open Gate."

Next Week—"The Open Gate."

Next Week—"The Open Gate."

Next Week—"The Open Gate."

Next Week—"The Open Gate."

Next Week—"The Open Gate."

Whitney Opera House.

Evening and Sunday Matinee, 100-150-250. WEEK DAY MATINEES 100-150-250.

A Musical Stage Production of the New "Fogg's Ferry."

Next Week—"The Open Gate."

Next Week—"The Open Gate."

Next Week—"The Open Gate."

Next Week—"The Open Gate."

Next Week—"The Open Gate."

FINE... JAPAN TEA

A 40c value for only

30c per pound.

Ask for sample. Nothing so good sold in the State

WHITEHEAD & MITCHELL.

WHITEHEAD & MITCHELL.