

BIRMINGHAM ECCENTRIC.

IN ADVANCE
WHOLE NO. 841

"Devoted to our Own Locality. We Labor for its Interests."
BIRMINGHAM, OAKLAND COUNTY, MICHIGAN, THURSDAY, JUNE 21, 1894.

PINE
JOB PRINTING
A
SPECIALTY
\$1 A YEAR
VOL 17 NO. 8

TIME TABLE
IN EFFECT
JUNE 4, 1894.

WESTWARD	
Montpelier Express	10:30 a. m.
Mail	11:00 a. m.
Montpelier Express	1:00 p. m.
Mail	1:30 p. m.
Chicago Express	11:45 p. m.
Mail	12:00 a. m.
EASTWARD	
Chicago Express	5:00 a. m.
Montpelier Express	5:30 a. m.
Mail	11:00 p. m.
Montpelier Express	11:30 p. m.

WALL PAPERS!

Why buy your Wall Decorations elsewhere when our prices are the lowest and styles the latest!

We sell good papers at 3c, 4c and 5c per roll. Gilt at 6c, 8c and 10c. Borders at 1c, 2c, 3c, 4c and 8c per yard.

Shades and Shading Cloth

Mounted Shades at 25c, spring roller. Mounted Shades at 40c, Opaque Cloth.

Shade Bars and Pulls, New Styles.

Fine line of Men's Shirts and Overalls at 25c, 50c, 75c, 90c and 1.00.

New novelties just received in

Hosiery, Dry Goods, Boots and Shoes.

No trouble to show our goods as our styles and prices are trade winners, at

F. BLAKESLEE'S,
Birmingham, Mich.

LAWN MOWERS!

Prices \$3, \$3.50, \$4, \$4.50, \$5 and \$6. All Mowers warranted.

Window and Door Screens Cheap.

Largest stock in town to select from. Call and see the above goods and get prices.

Tin Work and Sheet Metal Work a Specialty.

Anyone wishing tin work will get their prices right. I have a first-class tin who has served at the trade twenty-two years. There is nothing in this line but what we can suit you. I handle all kinds of steel roofing and would be pleased to give any parties wishing roofing, any style, my prices and show them my goods. I will not be cut down by anyone on a first-class job.

WINDMILLS.

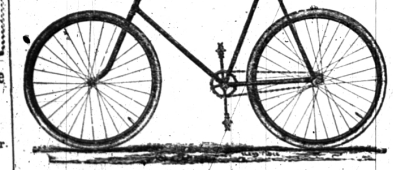
I carry in stock both steel and wood mills. Pumps of all kinds with prices to suit customers.

GARDEN SEEDS.

I have a fresh stock of Garden Seeds warranted true to name and of good assortment as ever brought to this town. (Union Seed.) I have plenty of all kinds arranged to be 50 per cent off or money refunded. I will be pleased to show to anyone in need of the above goods.

Yours truly,
A. BLAKESLEE.
BIRMINGHAM, MICH.

PRICE LAST YEAR \$135.00.
PRICE THIS YEAR, 1894, \$100.00.
OUR PRICE THIS YEAR, 1894, \$85.00.
CASH RIGHT ON THE SPOT ONLY \$75.00.



The Waldo. Weight 30 lbs.
A HIGH GRADE "UP TO DATE" WHEEL AT A MODERATE PRICE.

DESCRIPTIONS—High frame with graceful lines. 28 inch wheels, steel rim with cream rubber tires. Drop handle bars, double button, down and raised and held at rim with cream rubber. Double or cut up front forged steel cranks. Oil cup bearing hardened double pressed ball bearings. Simple chain adjusting device. Standard saddle. Magna & Wright pneumatic tires, standard finish.

OPTIONS—Hager hockey front or back gear, 1 & 2 tiers with steel tires, extra, raised or dropped handle bars, adjustable rubber gear extra.

We offer this wheel as a strong, reliable, easy running roadster equal to the best. It is fully guaranteed for one entire riding season against defective material or workmanship.
WHITEHEAD & MITCHELL,
Birmingham, Mich.

HOME NOTES.

Correspondence crowded out this week.
Millet 75c per bushel. E. R. Smith & Co.
Commencement exercises to-night at the M. E. church.
Members of the alumni please bring cake to the banquet.
That was a handsome bequest and the donor will please accept thanks.
For sale, a Deering binder. Good as new. E. C. Poppleton, Excavator.
Hon. E. C. Stevenson speaks at Clarkston Wed. a. m. and here at 4 p. m. July 4.
Herbert Allen and wife, of Okemos, Mich., are at home with her parents at Wm. Allen's.
Catch on to the E. C. Poppleton new village plat. His prices for lots are wonderfully low.
For sale, Tiger mowing machine, nearly new. Will sell cheap as I have no use for it. A. A. Bean, Clawson, Mich.

Two Alabama men died for not knowing the difference between alcohol and acetone. They stole the poison from a drug store.
When Bostonians take to sending as a remedy for acquired love, it is time for the rest of the country to set a watch upon itself.
Mr. Petros, of Detroit, will preach for the Liberal Christians at Liberty Hall next Sunday morning at 10:30. All friends are welcome.
Our High School Principal, Mr. McKee, goes on the road for Ginn & Co. the last of July at a salary of \$100 per month and expenses.
Birmingham girls don't want to be recognized for they don't like to give up Indian clubs and surely will not give up riding their bicycles.
The annual meeting of the L. L. C. will be Monday evening, June 25, at the residence of Mrs. Sawyer. A large attendance is desired.
Mrs. Phillip Darke's home will hereafter be with her relatives in Detroit. Her auction closes out all her interest in the rural district.
St. Louis has a man who claims not to have slept during the last 20 years.

What's the matter with sending him to the U. S. Senate?
The graduates to night of the Birmingham High School, make as fine a lot of graduates as ever stepped forth from the B. H. S.
For sale, a new milk cow cheap. Can be seen at Ralph Bayley's, one mile south of Big Beaver. Call early and secure a bargain.
Miss Winnie Daines now rides a new bicycle bought of Whitehead & Mitchell. It is an "Ernestine" and a very beautiful, easy running wheel.
The hair dealers had better prepare for a run on red wig, as an article going the rounds of the papers says they make old women look young.
Miss Jessie Edmonson, of Southfield, Mich., is the guest of Miss Stella Ward and having a grand, good visit with all of her old schoolmates.
The Davenport race course in Troy calls out for the attendance of our best families and they all go and have great sport seeing the flyers come in at a 2:10 gallop.
(Additional Local on Fourth Page.)

'NOTHER CHANCE.
For one more week we continue the following cut prices: Men's Suits for

\$11.50
Young Men's Suits, 14 to 19 years, cut from \$9 and \$10 to

\$6.37
Boys' Suits, 4 to 14 years, cut from \$5, \$6 and \$7 to

\$4.37

We're having a big trade but we fill up the gaps with regular stock so that the assortment is always good.

R.H. TRAVER
113, 115, 117 WOODWARD AVENUE, DETROIT.

Clarence Cowles,
Architect,
1200 S Jefferson Ave.,
Saginaw, Mich.
Mail orders promptly attended to.

NEW Flour and Feed STORE
In Birmingham.

We take this means of notifying the farmers of Birmingham and vicinity that we have opened a new Flour and Feed Store at the old stand where we have both located and great quantities of stock. We continue to hold all the old patrons and many new ones in this our new enterprise. We shall keep on hand for sale at all times, all kinds of

Feed, Flour and Grain.
We shall have three grades of Flour to suit all calls or demands. We deliver promptly to all parts of the village hour and feed and by strict attention to business and by fair dealing with you, we hope to merit a share of your patronage. Major J. Jones has sole proprietor of the Birmingham Flouring Mills and is running this property under his sole control and will manufacture flour and feed etc. in the most approved manner. Satisfaction guaranteed in every case. A trial is solicited.

Jones & McClellan,
Birmingham, Mich.

PATENTS
Covers and Trade-Mark Registered, and all Patent business conducted for MODERATE FEES. We are in possession of U. S. Patent Office and we can secure patent in less time than those come from Washington.
Send model, drawing or photo, with description. We draw, if necessary, or make drawing for you. Our fee for U. S. Patent, with J. A. Pennington, "Patent" U. S. and foreign countries sent free. Address:
C. A. SNOW & CO.,
Opp. Patent Office, WASHINGTON, D. C.

Birmingham Exchange Bank.

A. WHITEHEAD, Cashier.

FUSION AND AMERICAN EXCHANGE
Bought and Sold.

STEAM SHIP PASSAGE SOLD
to and from

All Parts of Europe.

MONEY TO LOAN.
It's not what you earn but what you SAVE that makes you rich.
Bear your costs interest paid on Certificate of Deposit, if left three months or more.

THE BOOM IS ON

AND YOU HAVE ONLY 18 CHANCES TO

BUY A HOME

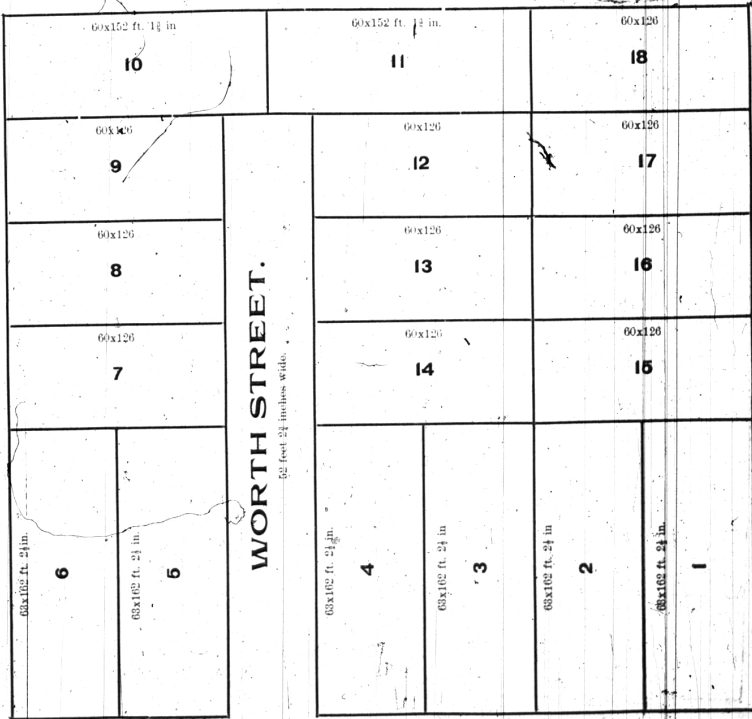
IN

Edgar C. Poppleton's Subdivision in Birmingham, OAKLAND COUNTY, MICHIGAN.

18 CHOICE LARGE BUILDING LOTS,

East of the railroad, now ready and for sale (see plat below), and all within a three minute's walk of the depot. No sewers to be built on this plat. Twenty years ago it was all thoroughly sewered every 66 feet, and is nice and dry at all seasons. The Maple Avenue water main runs along the front of this plat. Perfect title. Remember, there are but 18 of them. See me and buy a nice building lot and home.

May 15, 1894. **EDGAR C. POPPLETON.**



MAPLE AVENUE.